

ALL
MEMBER
EDITION

the PLUME

Let
Phi

TAU EPSILON PHI

FOUNDED 1910

INTERNATIONAL COLLEGIATE FRATERNITY GROUP

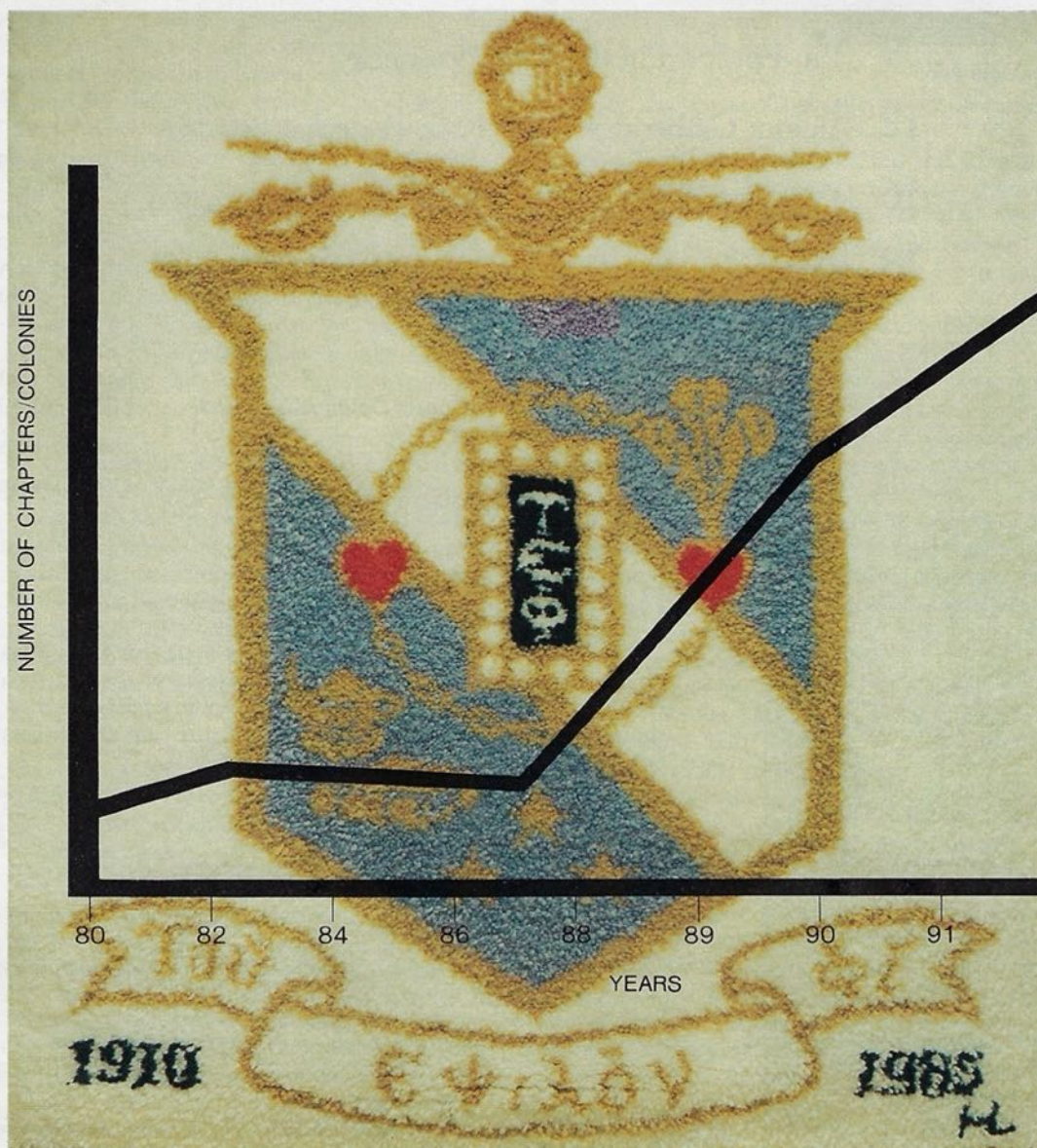
SUMMER, 1988

VOLUME LXXVI

USPS 436260

NUMBER 2

Come Grow With Us



the PLUME

*The Official Magazine of the Tau Epsilon Phi Fraternity
Summer 1988 Edition*

In This Issue...

- 5 1989 National Convention set for Baltimore, Maryland
- 6 TEP Foundation Scholarships for 1988 Awarded
- 7 Awards for Chapter Excellence Presented
- 8 National Fraternity Sponsors Regional Conclaves
- 9 Tau Epsilon Phi Growing Nationally
- 12 Alumni Gatherings Bring Back Fraternal Bonds
- 16 Two New TEP Foundation Scholarships Created
- 18 Reflections on a Semester of TEP Travel

the PLUME

Is published quarterly by the Tau Epsilon Phi National Fraternity, 3088 Mercer University Dr., Suite 200, Atlanta, Georgia 30341. An application to mail at 2nd Class Postage Rates is pending at Atlanta, Georgia 30341.

The PLUME is the official Educational and Fraternal publication of the Tau Epsilon Phi Fraternity and postage is paid in Atlanta, Georgia. The annual subscription rate for members and associates is \$15.00 and is included in the National Fraternity's annual membership dues or can be paid for separately.

POSTMASTER: Send address changes to the PLUME, 3088 Mercer University Dr., Suite 200, Atlanta, Georgia 30341.

All copy and correspondence for publication in the PLUME should be sent c/o Editor, the PLUME: 3088 Mercer University Dr., Suite 200, Atlanta, Georgia 30341.

Departments:

From the Desk of Robert Goldman,
Executive Director

From the Editor

From TEP's Bald Eagle, Sidney Suntag

TEP Foundation Report
Alumni News
TEP Gifts and Jewelry

On The Cover:

Brother Harold Leviton's (U. Miami, '40) hook rug which depicts the Crest of Tau Epsilon Phi adorns the reception area of the Fraternity's National Headquarters in Atlanta, Georgia. The graphic overlay on the cover vividly shows the growth of Tau Epsilon Phi to date and our projections for the future.

To Our Subscribers:

Please note that due to the increased costs incurred in the publication of the PLUME of Tau Epsilon Phi, the annual subscription rate of \$15.00 per year has been reactivated. Subscriptions to the PLUME are included in the annual alumni dues of \$35.00 per year.



National
Interfraternity
Conference



THE PLUME

EXECUTIVE DIRECTOR'S NOTES

Thoughts while 30,000 Feet in the Air

When I started to think about the form and content for this, my second message to all of you since November, it occurred to me that just letting you hear about some of the daily work of the Fraternity might be an excellent way for you to gain a sense of the scope of the job to be done . . . the hopes, successes, concerns, challenges, frustrations and opportunities that we face now and in the future. So, if you'll bear with me, I'll try to give you a small slice from the last two weeks and perhaps you'll come away with an appreciation for what the word "NATIONAL" means when we talk about belonging to TAU EPSILON PHI.

I'm on the way to New York for a meeting of the Property Division tomorrow where we hope to resolve the approach for restructuring the property programs not only for the future, but especially for now, so we can either acquire new houses or make significant improvements for Georgia, Florida, Virginia, South Florida, Drexel and Illinois. Then it's on to Boston for the reactivation of the Chapter at Northeastern University where we will have twelve candidates for the pledge pinning. Hopefully the alumni from the 50's: David Abrams, Norm Rosenblatt, Burt Herman and Paul Witty can make the ceremony; I have some meetings Thursday with Rho (Penn) alums, Stan Waldstein and Dave Love; I'll be out on Friday looking at real estate for Northeastern in the morning (did he say 7:30?) and then to Philadelphia to continue the negotiations for the Drexel property. Also, I have to contact Eric Jonas tomorrow to see how his committee is doing on the Foundation Awards. We need those for this issue. I believe he, Al Versacci, Leo Gordon, Gerry Whitman, Sheldon Grebstein and some other Trustees are meeting next Tuesday night when Al is back from his business trip.

Jon is leaving for California for the USC Board meeting on Wednesday morning, so hopefully he and I will be able to spend time together on Tuesday to put the *PLUME* to bed and review his meeting agenda and trip objectives. I'm glad we have been able to regain such strong support from the USC alumni for the renovation of the house and the strengthening of the Chapter. Jon is also going to meet with Mike Quaranta, Deputy Regional Governor in California and President of the Tau Alpha Kappa (Lehigh) Alumni Association; conduct a Rush for the thirty potential candidates who responded to our Ad at UCLA regarding the re-activation of the Tau Upsilon Chapter; meet with Barry Weinstock, the Tau Upsilon alumnus who was instrumental in initiating the Dick Channon Memorial award, look at some real estate for UCLA, review the expansion possibilities on the Coast with our Regional Governor, Harry Bernhard and Grand Council member, Jeff Gordon; and meet with the contractor at the USC property.

While Jon and I are away, the Chapter Service field staff, Ron Brooks and Mitch Weinstein, will be: getting the materials ready for our Summer Conclaves which run each weekend from July 29th to August 26th in eight different cities around the country; working on our new PORTALS, writing their articles for the *PLUME*, tracking down various non-responding chapters regarding the Conclaves (we currently have over 200 attendees with 12 Chapters to hear from); updating the various administrative and rush manuals and providing a myriad of services for Grace, Sid and Marie, Jon and I that have to be done.

Of course, our year end was May 31, so Grace has her work cut out for her getting the books ready for the accountants and Gerry Denmark for the 1987-1988 progress review and to discuss plans and programs for next year.

Convention '89 is already high on the agenda, and I've got to review with Gerry the preliminary plans that John Smeyne, Ed Raskin, Hotsy Alperstein and our Grand Chancellor, Ron Charpentier, and I discussed last week.

Somewhere in between, Jon, Sid and I found time to attend the Annual FEA Conference on July 6th-9th. As a rookie Executive Director, I was there the 4th for the orientation session on Tuesday. We enjoyed seeing the National Fraternity Executives again and the opportunity to try to find some answers to our mutual concerns.

Well, they just turned on the fasten seatbelt sign for the landing in NYC so I better try to wrap this up. I hope this different "diary" approach and a glimpse into our lives and our thoughts gives you an appreciation for what's involved in trying to achieve our goals. (I believe the *PLUME* cover dramatically presents our chapter/colony growth to date and our projections.)

Unfortunately, all of our gains and the plans for the future may be for naught if we can't effectively find solutions for the issues that threaten not only our Chapters but undermine the integrity of the entire Greek system. All of the Chief Executive Officers of the National Fraternities are addressing the mutual concerns. Particularly, Durwood Owen, Pi Kappa Phi Executive Director, who was instrumental in organizing and directing discussions on the critical issues facing all of us. In addition, there are University Deans such as Mary Ellen Porter and Chris Columbo at John's Hopkins, Barry Millett at Rutgers Camden and Bill Lucy at Maine (Orono), to name a few, who have reacted professionally, and in concert with us, to defuse and resolve chapter disciplinary issues expediently.

There are, however, undergraduates, chapters, university administrators and others who do not share our National Fraternity's principals and have yet to heed our call for mutual airing and resolution of our common issues and needs.

Hopefully, in the ensuing months, we will be able to better understand each other's objectives and move forward together in a concerted way within a non-adversarial forum. "People that fly together, land together." Now, who said that?



Bob Goldman

Fraternally and sincerely,

Robert S. Goldman
Executive Director

TAU EPSILON PHI FRATERNITY

A message from the TEP Foundation...

FOUNDATION SUPER ACTIVE Bequest Program to be Instituted

Since my last report to you in the previous issue of the *PLUME*, I am happy to announce that the TEP FOUNDATION, INC., has continued its remarkable movement forward. During this short period, a meaningful number of substantial donations by alumni have been made to the Foundation for its general purposes.

To be looked forward to shortly is the announcement of a bequest program in which alumni will be urged to remember TEP in their wills, or through insurance policies. A brochure explaining the various ways that alumni can help the Fraternity through this unique relevant manner is now being prepared, and will be available shortly.

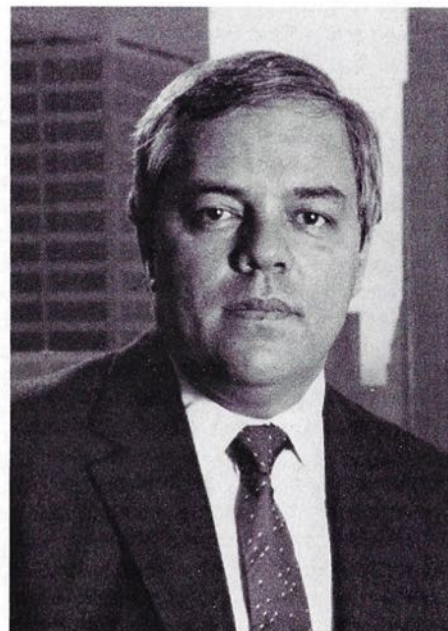
I am happy to announce that Brother Albert J. Schiff, Omega (North Carolina) has kicked off the program when he recently named the TEP Foundation as co-beneficiary of a charitable endowment he has developed. The bequest is in the form of a substantial Life Insurance policy which Brother Schiff will support by making annual premium payments. Brother Schiff served with distinction as Consul (International President) of the Fraternity

from 1983-85, and is currently a member of the Foundation Board. The Trustees and I are most grateful for his generosity.

Equally satisfying, I can announce that two additional scholarships have been endowed in the past two months. One has been funded by Past Consul S. Earl Gordon, Tau Delta (Ohio State). The other has been established in memory of Brother Dick Channon, Tau Upsilon (UCLA) through the generous contributions by his chapter brothers and friends. Further details will be found elsewhere in this issue of the *PLUME*.

To me, as President, it is encouraging that half (or 15 members) of the new Board of Trustees of the Foundation are newcomers who have injected a new force in the governing board. Among these new Trustees are presidents and high officials of universities, as well as prominent members of the business, professional and banking communities. Their input in the deliberations of the Board of Trustees has been electrifying, leading to many innovations.

ALUMNI — SUPPORT THE TEP FOUNDATION!!



Alfred C. Versacci

From the 'Bald Eagle's Nest'

FRATERNITY — THE WORLD'S GREATEST YOUTH MOVEMENT?

Many years ago there lived a man by the name of Leland "Pete" Leland of St. Paul, Minnesota. He was a member and later National President of TAU KAPPA EPSILON Fraternity. His business was that of a printer-publisher and his specialty was fraternity magazines. For almost 40 years, he published the TEP *PLUME*. In conjunction with his specialty, he and his wife published a lively fraternity "trade" magazine called *The Fraternity Month* which contained news of interest to the fraternity world. He was, to say the least, a firm lover of and believer in the fraternity system.

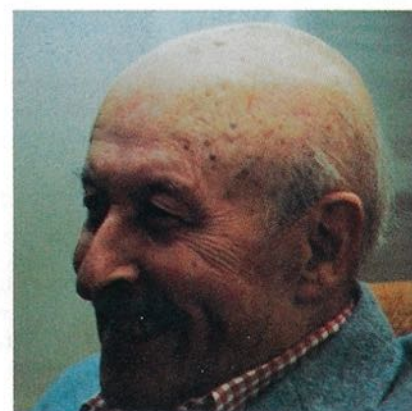
At an interfraternity meeting, which I attended and is now long forgotten, "Pete" casually mentioned that in his opinion, the fraternity system was the world's greatest youth movement. He

liked that thought so much that this statement became a prominent part of the masthead of each issue of *The Fraternity Month* and remained so for many years, until he passed on.

To me, this simple statement — fraternity is the world's greatest youth movement — has more meaning today than it has ever had. It is a known fact that during the 18-22 age period young men make associations that will last them a lifetime. What better way to accomplish this than through the closeness that fraternity brotherhood fosters?

No other association can approach the values that fraternity membership can and does teach in the maturation process of young college men. Yet, that bonding of loyalties and mutual interests within a college fraternity can, without positive

(continued on page 8)



Sid Suntag

Sailing Into the Future

Tau Epsilon Phi Fraternity's 1989 Grand Chapter Convention

Tau Epsilon Phi announces its 1989 Grand Chapter Convention which will be held at the Stouffer's Inner-Harbor Hotel in Baltimore, Maryland August 16-20, 1989.



A formal banquet will be held giving alumni, undergraduates, family, and guests the opportunity to dine and dance to music of the 50s thru 80s. On hand will also be our Special Toastmaster, a TEP all America knows.

The Grand Chapter Convention will afford both alumni and undergraduate brothers the opportunity to renew old friendships and make new ones during the planned receptions, banquets and meetings.



Informative guest speakers will be presenting a wealth of material on our ever-changing Fraternity world and on a variety of topics of interest to both our undergraduate and alumni brothers.

Baltimore, Maryland

At the Grand Chapter meeting, we will discuss major policy changes in the Fraternity's organization and highlight several new programs and a variety of Constitutional Legislation.

STOUFFER HARBORPLACE HOTEL

Special events will be held throughout the week honoring several alumni who have served with distinction. We will also be inducting an international media personality into the Portals of Tau Epsilon Phi.

Plan on joining your Tau Epsilon Phi Brothers for our 1989 Grand Chapter Convention in Baltimore for a memorable Fraternal gathering. More information and registration materials will be included in future editions of the PLUME.

TEP FOUNDATION



The 1988 Recipients of the Scholarship Awards of the TEP Foundation

****these awards were presented to Brothers based upon their achievements during the 1987-88 academic year.**



Richard Leff

The **I. "DOC" SCHWARTZ MEMORIAL UNDERGRADUATE OF THE YEAR AWARD** is presented to **RICHARD A. LEFF**, a senior at Hofstra University. Richard held every major position in the Sigma Alpha Sigma Chapter during his undergraduate career and went on to be elected Interfraternity Council President as well as Greek Man of the Year. He will be entering law school this fall yet will continue to serve the Fraternity as an alumni advisor.

The **SIDNEY S. SUNTAG SCHOLARSHIP** is awarded to **NORMAN E. WEDDERBURN** for his service to the Tau Alpha (Florida) as live-in graduate advisor. While an undergraduate at Florida, Norman held every major chapter office and was elected into the Florida Blue Key as well as several other honor societies. He is currently one of the top students in the University of Florida Law School.

The **HAROLD I. LEVITON AWARD** is presented to **STEVEN KUSCSIK**, Bradley University (Epsilon Ta), who has compiled an outstanding record academically while pursuing a degree in engineering.

The **MICHAEL FALK SCHOLARSHIP** is awarded to **DAVID ROSENBERG**, University of Pennsylvania (Rho), for his outstanding devotion to scholarship, fraternity and service while a student at Penn's Wharton School of Business.

The **ISADORE HEIMAN MEMORIAL AWARD** is presented to **GREGORY JAY**, University of Georgia (Nu), for his excellence in scholarship, extracurricular activity and fraternity service.

The **SOL SHAMAN HONORS AWARD** is given to **MICHAEL DUDAS**, Johns Hopkins (Phi Eta), for his outstanding fraternity service and campus activities.

The **SARA AND E. J. EVANS AWARD** goes to **OWEN DWOSKIN**, Florida (Tau Alpha), for his achievement in scholarship, campus activity and fraternity service while Chancellor of his chapter.

The **JACK A. KING MEMORIAL SCHOLARSHIP** is presented to **STEVEN ROSS**, Drexel University (Epsilon Eta), for his outstanding scholarship and campus leadership.

The **A. HAROLD FROST AWARD** is awarded to **SCOTT GOLANT**, University of Pennsylvania (Rho), for his work as a pre-law student who has excelled in scholarship, fraternity service and extracurricular activities. Scott will be attending the University of Chicago Law School next fall.

The **PERLOW BROTHERS SCHOLARSHIP** is presented to **DAVID SUMKA**, who has displayed an outstanding record of achievement as a Brother of the Tau Beta Chapter (University of Maryland) while fulfilling the part of our National Creed which asks each member "to Serve for the Love of Service."

The **LOUIS L. MANES LEADERSHIP AWARD** is presented to **RICK JACOBS**, University of South Florida (Phi Beta), for his outstanding work as a prominent undergraduate scholar and leader. Rick served with distinction as Interfraternity Council President at USF.

The **LEONARD WOLF AWARD** goes to **LARRY KUNIN**, University of South Florida (Phi Beta), who excelled while an undergraduate in the State of Florida serving as Interfraternity Council President at USF in 1985. Larry currently serves as alumni advisor to the colony at the University of Miami while attending graduate school there.

The **SAMUEL J. LEFRAK SCHOLARSHIP** is awarded to **CHRISTOPHER BRACKETT**, Lynchburg College (Delta Chi), for his excellence in scholarship, campus activity and fraternity service while pursuing a technical course of study.

The **NORTHEASTERN UNIVERSITY AWARD** is presented to **ERIK MARQUES**, Cornell (Delta), for his outstanding work in the area of community service and campus activity.

The **ELLIOTT GARBER MEMORIAL AWARD** this year is presented to **ROBERT ABRAMSON**, Emory (Mu), who has compiled an outstanding record of achievement in scholarship, extracurricular activities and fraternity service while attending an institution in the State of Georgia.

The **LEON SCHNEIDER MEMORIAL SCHOLARSHIP** is awarded to **LEE OPPENHEIMER**, University of North Carolina — Chapel Hill (Omega), for his achievements as a student in the State of North Carolina.

The **GOVERNOR MARVIN MANDEL AWARD** recipient for 1987-88 is **MONTY YOLLES**, University of Maryland (Tau Beta) for his outstanding service and leadership as a brother from the State of Maryland.

The **JEROME AND IRVING LEIBROSS AWARD** goes to **MICHAEL HOCHMAN**, University of Illinois (Psi), for service and dedication to his chapter and for outstanding scholarship.

The **LEO SCHLOSSBERG MEMORIAL AWARD** is presented to **JOSEPH DeGEARO**, SUNY-New Paltz (Tau Eta Epsilon), for excellence in fraternity service and leadership as chancellor of his colony.

The **NORMAN LIPOFF AWARD** recipient is **GREGORY JACOBS**, University of Florida (Tau Alpha), for excellence in academics, leadership and fraternal service as a student in the State of Florida.

The **S. EARL GORDON SCHOLARSHIP AWARD** winner for 1987-88 is **ADAM ROSENBAUM**, University of Illinois (Psi) for his outstanding involvement as a chapter leader and for fraternal service.

The **JOSEPH FORD MEMORIAL SCHOLARSHIP** for 1987-88 goes to Brother **JORDAN GOLDBERG**, George Washington University (Tau Theta), for his excellence in campus activities and fraternal affairs.

TAU EPSILON PHI FRATERNITY

The Tau Epsilon Phi Awards for Chapter Excellence

The **DRIESEN CHAPTER EFFICIENCY AWARD** goes to PENNSYLVANIA STATE UNIVERSITY (Epsilon Phi Chapter).

The **KLEINBERGER SCHOLARSHIP AWARD** goes to both EMORY UNIVERSITY (Mu Chapter) and the UNIVERSITY OF ILLINOIS (Psi Chapter) for having the highest cumulative grade point averages of any chapter in the entire Fraternity.

The **ALUMNI CHAPTER PUBLICATIONS AWARD** is presented to both CORNELL UNIVERSITY (Delta Chapter) and ROCHESTER INSTITUTE OF TECHNOLOGY (Epsilon Nu Chapter) for their excellent alumni publications named respectively "The Deltan" and "Epsilon Nu's."

The **FEIN GRAND CHAPLAIN AWARD** is the year awarded to the UNIVERSITY OF FLORIDA (Tau Alpha Chapter) for their efforts in the area of community service and charitable fundraising.

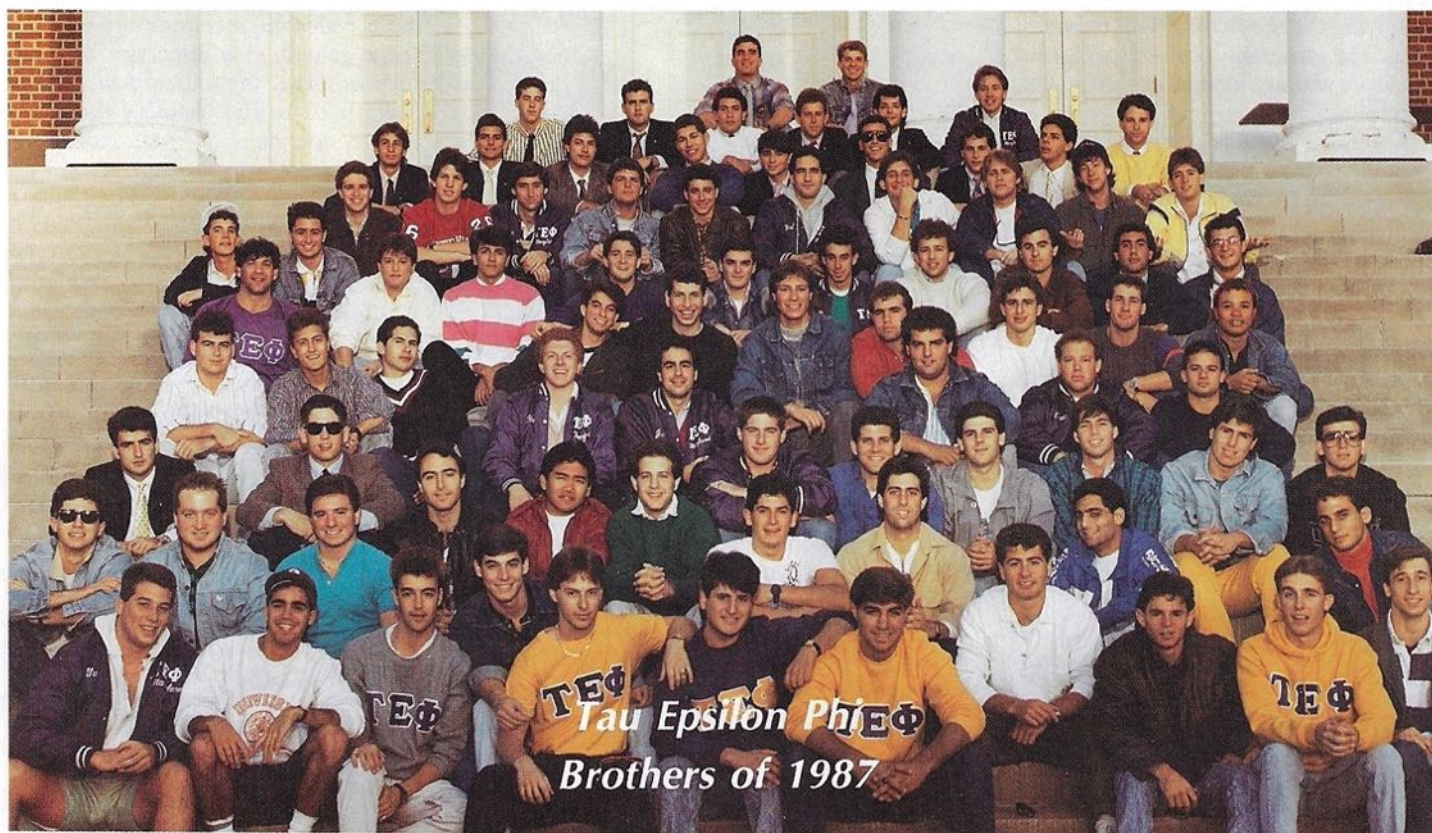
The **LEFRAK CAMPUS ACHIEVEMENT AWARD** is presented to the chapter that exhibited excellence in campus leadership and extracurricular activities this past year at the UNIVERSITY OF SOUTH FLORIDA (Phi Beta Chapter).

The **LEBENTHAL CHAPTER IMPROVEMENT AWARD** for 1987-88 goes to SUNY-ALBANY (Alpha Sigma Chapter) for showing marked improvement in all areas of fraternity activity during the course of the past academic year.

1988 Chapter of the Year

The **IRVING GOLUMBE CHAPTER OF MERIT AWARD** is presented to the UNIVERSITY OF MARYLAND (Tau Beta Chapter) for 1987-88. The Tau Beta Chapter has exhibited

fraternal excellence in every facet of Greek life including chapter administration, service, membership recruitment and retention, candidate and brotherhood development, and leadership.



TEP Holds Regional Summer Leadership Conclaves Across the Nation

Webster's Dictionary defines a conclave as a gathering of a group or association. Tau Epsilon Phi views a conclave as a gathering of representatives from each Chapter at a host institution to discuss relevant Fraternal matters, hold workshops, share war stories and just have a good time.

This summer, Tau Epsilon Phi is holding eight Summer Leadership Conclaves in major regional areas throughout the nation. The purpose of these conclaves is to educate the undergraduate participants on issues ranging from Rush & Recruitment, Leadership Development and Chapter Administration to Risk Management and Fraternity House Maintenance.

Over 200 Brothers representing every active chapter and colony have registered for the conclaves which are being held in Miami, Atlanta, Washington, Philadelphia, New York, Boston, Chicago, and Los Angeles during July and August. The weekend conclaves have been scheduled to allow the highest level of attendance by undergraduate leaders in close proximity to their homes while at the same time eliminating costs for travel and housing.

The conclaves provide a tremendous opportunity for our chapters' leaders to learn and grow together while at the same time assist each other in solving the problems which exist as a normal part of fraternity life. The program planned will revolve around a series of seminars and discussions covering all areas of the undergraduate fraternity.

The fraternity world is everchanging and 1988 has definitely been a trying year for Greek men and the nation's Greek systems. Discussions will be held to address issues such as

the rising concerns about hazing and alcohol related accidents and deaths.

And, as the levels of responsibility increase for Greek leaders so must our chapters learn to cultivate young men into leadership positions within their individual groups. In order to focus on this need, TEP National has prepared a new Leadership

Development manual which will be introduced during these sessions as well.

Another topic for the conferences will be Chapter Organization and Administration. Although each institution's Greek system is arranged differently, the National Fraternity has standards for both chapter performance and administration which will be reviewed by the conclave staff. Also, the National Headquarters has recently undergone several major changes in the programs, resources and materials available to all undergraduates and alumni which will be previewed and discussed.

The National Fraternity holds Regional Conclaves and Leadership Seminars every other summer, during off-convention years. The Conclaves are funded through donations to the TEP Foundation Inc. and from monetary gifts dedicated to furthering the educa-

tional purposes of both the Fraternity and the Foundation. Although the costs of these valuable meetings are clearly outweighed by the knowledge gained, it is important to note that by providing events such as these, the undergraduates are given the opportunity to take back to the chapters the tools which will assist them in the operation of their individual groups.

TEP 1988 Summer Conclaves

JULY 29-30

Chicago (IIT)
New York (Hofstra)

AUGUST 5-6

Miami (St. Thomas U.)
Atlanta (Emory)

AUGUST 12-13

Washington (U. Maryland)
Boston (MIT)

AUGUST 19-20

Philadelphia (U. Penn)

AUGUST 26-27

Los Angeles (USC)

From the Bald Eagle's Nest (continued from page 4)

leadership, breed arrogance that results in bad habits, as we shall see.

During the past five years, the fraternity system has enjoyed its strongest resurgence in more than a quarter of a century. Not only have new chapters in all Nationals proliferated (TEP alone has added 17 new colonies and interest groups during the past year), but also membership in most existing chapters has literally exploded. Rarely ever has there been such a demand for fraternity membership!

Possibly because of this phenomenon, serious behavior problems have arisen in many fraternity chapters throughout the continent. The media has reported an inordinate number of hazing, drinking

and other serious disorders in fraternity chapters, leading to suspensions and worse. Is it possible that arrogance has emerged as a by-product of this closeness that has made fraternity the world's greatest youth movement? Does this portend an adverse reaction by college administrations and future prospective members that would threaten the continued well-being of the world's greatest youth movement? Obviously, unless undergraduate and alumni leadership take hold and reverse the unfortunate trend that became apparent during the past year, then the system which is entitled "the greatest" may not deserve to survive.

...



the PLUME

FOUNDED 1910



TAU EPSILON PHI

INTERNATIONAL COLLEGIATE FRATERNITY GROUP



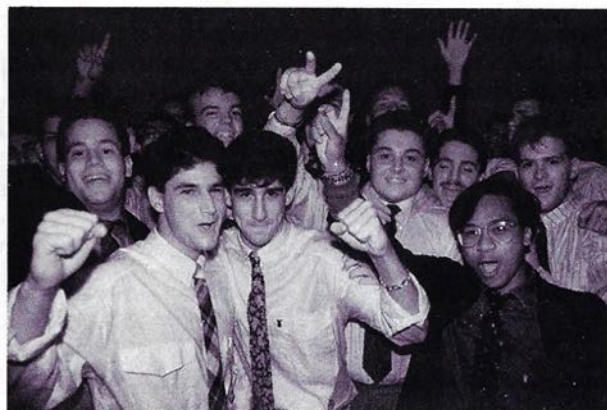
Come Grow With Us



To Live in the Light of Friendship
To Walk in the Path of Chivalry
To Serve for the Love of Service



*"Dedicated to the Candidates
of Tau Epsilon Phi, upon
whom the future of our
Fraternity depends."*



TAU EPSILON PHI FRATERNITY

The Value of a Fraternity

A fraternity can be important to a student's personal and academic development. From a personal standpoint, you will form long and lasting friendships. You will expand your social life and gain a fraternal family in time of need. You will begin contact with business and social leaders (your alumni) and develop leadership and organizational skills.

From an academic standpoint, fraternity men have peer support for scholastic achievement. The G.P.A. of most fraternity men exceeds that of non-members on just about every campus. And, involvement in Fraternity will give you the opportunity to be a leader and to gain fiscal, management and leadership experience.

Tau Epsilon Phi: Our History and Principles

Founded in 1910, at Columbia University, Tau Epsilon Phi was founded on the principle of open, non-discriminatory membership. There has never been a requirement based upon a man's race, creed, color or national origin. Tau Epsilon Phi has men from all over the United States, Canada and the world; we are from a variety of backgrounds and diverse interests.

Most important, we are brothers with a collective strength. This strength comes from the belief that we all share with our Fraternity's founders . . . "To judge our fellow men not by their rank nor wealth, but by their worth as men."

Tau Epsilon Phi Fraternity Services

The Tau Epsilon Phi National Fraternity offers a variety of services to our undergraduate and alumni brothers and other associates. The Fraternity's Headquarters, located in Atlanta, Georgia is the focal point for all programs and activities related to the international organization which has active undergraduate and alumni chapters throughout the United States and Canada.

Visitations by Professional Field Staff: These visits are designed to assist our Chapters in the development of sound management, organizational and leadership programs.

Financial Guidance: The Fraternity Headquarters provides budgetary assistance, standard budget forms and guidelines for all its chapters and colonies. Also, on-campus counseling is available when a member of the Field Staff is visiting a particular group.

Insurance Program: TEP provides liability and property insurance coverage to our chapters and members in the event of a fraternity-related accident or claim.

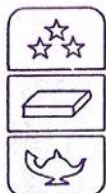
Membership Records: The Tau Epsilon Phi Membership Management System monitored through the Fraternity Headquarters provides updated listings of

all chapters and members in a variety of formats along with mailing labels for alumni and chapter correspondence.

Publications: Along with our magazine the *PLUME*, TEP provides a wide range of materials and manuals to our undergraduate chapters and colonies on Fraternity-related issues and activities.

Conventions and Conclaves: TEP holds an International Convention (the Grand Chapter) every two years and also sponsors Regional Leadership Conclaves to unite our Chapters and to build on our common experience.

The TEP Foundation, Inc.



Scholarships and National Awards: The TEP Foundation rewards outstanding scholarship and leadership each year through a series of monetary awards.

Graduate Advisor Program: The TEP Foundation can arrange for a graduate student to live in a Chapter house and work as an advisor/counselor for groups in need of intense and ongoing assistance.

Annual Alumni Contributions: The TEP Foundation is a tax deductible organization therefore each year many TEP alumni donate funds which, in turn, are used to better serve the educational purposes and needs of our members.

TEP Properties, Inc.

a division of the Tau Epsilon Phi Fraternity:

Chapter Financial Assistance: Chapters in good standing may secure financing and loans at below market rates for improvements to existing housing or in order to purchase available fraternity housing.

Chapter Insurance Program: Chapters and colonies are able to obtain liability and property coverage at low rates through the Fraternity's Umbrella Insurance Policy.

Community Relations Program: TEP professional and volunteer staff serve as mediators between Chapters and local government or University officials in the areas of health safety, building or other code requirements.

Construction and Renovation Consultation: The Properties Division can act as a "general contractor" for any major construction or renovation program. This service ensures that bids and contracts cover exactly the scope of the work necessary. The Division can also serve as negotiators on insurance claims.

TAU EPSILON PHI FRATERNITY

Tau Epsilon Phi: A Fraternity on the Move

Currently, our National Fraternity is in the midst of an expansion program to strengthen the base of our membership at the undergraduate level. For most fraternities, expansion works in several ways. An organization can expand the number of chapters and colonies it has, or it can attempt to increase the active membership of its current chapters and colonies.

In the past few months, we have added 17 new colonies or interest groups. And, many of these groups are at schools that previously had active TEP chapters. Our goal is to continue on this path toward building a stronger fraternity and in future editions of the *PLUME* we will provide information on these successful expansion activities.

An underlying aspect of this aggressive expansion program is the provision of quality rush and recruitment activities within our chapters and colonies. Many of our chapters have specifically requested assistance from the National staff during rush periods. The field staff will be visiting these chapters and colonies this fall in an effort to help our individual groups reach their own established goals. They will help generate ideas, organize, plan, and eventually implement the programs. Since the field staff are representatives of the National Fraternity, these men are themselves useful as rush tools, to encourage rush

candidates, and motivate brothers. For the groups that are more difficult to visit during important rush periods, the National can arrange for brothers from chapters with more successful rush programs to assist at those groups requesting help.

Each chapter should have its own goals for expansion along with the National Fraternity expansion program. Objectives should be set to strengthen the chapter such as filling the house or simply increasing the size of the active membership. In turn the chapter will be able to generate a larger operating budget, which is always useful in creating more elaborate events as well as strengthening the brotherhood-at-large. These rush events attract the top-notch men that every fraternity is looking for. In short, having quantity breeds quality and that quality in turn, breeds quantity.

Just as Tau Epsilon Phi is on the rise again, it seems evident that the 1980s has seen an increase in the overall interests of young men in the "fraternity experience" throughout the United States and Canada. TEP's national expansion program will enable our Fraternity to become a strong voice in the fraternity world. Yet, the program will need the support of all our chapters, colonies, and alumni, in order to achieve the levels of success planned.

THE CHAPTER ROLL OF TAU EPSILON PHI FRATERNITY:

			Colonies
Bradley University	Johns Hopkins University	University of Rhode Island	Florida International University
Bryant College	University of Illinois	Rochester Institute of Technology	Queens College
City College of New York	Illinois Institute of Technology	Rutgers University — Camden	Towson State University
Clarkson College	Lehigh University	St. Thomas University	Rutgers University — New Brunswick
Cornell University	University of Maine	Syracuse University	University of Michigan
University of Southern California	Marietta College	SUNY-Albany	SUNY-New Paltz
Drexel University	University of Maryland	SUNY-Geneseo	SUNY-Binghamton
Emory University	Massachusetts Institute of Technology	Tulane University	Adelphi University
University of Florida	New Jersey Institute of Technology	Virginia Commonwealth University	McGill University
University of South Florida	University of North Carolina	Western New England College	Northeastern University
University of Georgia	Penn State University		
George Washington University	University of Pennsylvania		
Hofstra University			
Husson College			

DO YOU KNOW ANY YOUNG MEN WHO SHOULD BE TEPs? RUSH RECOMMENDATIONS REQUEST

Name _____ School Attending in Fall _____

Address _____

Age _____ Phone # () _____

Recommended by: _____

Grad Year _____

Address _____

Chapter _____

Alumni Reunions: Rekindling Eternal Friendships

In the past three months no less than four chapters' alumni have held well-attended, successful reunions: Tau Eta at Denver University; Gamma at N.Y.U.; Tau Beta at Maryland; and finally, marking the "25th Anniversary of Epsilon Phi's (Penn State) founding, it's alumni — with most founders present — celebrated the occasion in State College, Pennsylvania. Not to be overlooked is Alpha (Columbia) alumni "get-togethers" held perennially.

From information received in the National Office, several other chapter alumni are planning reunions in the very near future — most notably — Tau Gamma Chapter at University of Southern California in August, 1988. It is also expected that chapter alumni groups will be encouraged to meet and "break bread" at the next International Convention of the Fraternity that will be held in Baltimore's Inner Harbor Area in August, 1989.

This resurgence of alumni interest, possibly ignited by the recently published *Geographic*, is most gratifying. It matches the enthusiasm of the undergraduate chapters who are now completing one of the most successful years in TEP's history. Not only are most chapters in good health, but also the recruitment of new or reactivated chapters this past school year has been truly phenomenal. In a matter of months, 17 new colonies and interest groups have been established, and it is anticipated that this record will be at least equalled during the next school year.

Chapter alumni, who have a desire to hold a reunion, need only communicate with the National Office, c/o Sid Suntag, Alumni Consultant. Computer printouts, advice, etc., will be readily available — without cost.



*Tau Beta (Maryland) "A great time for all" —
Hotsy Alperstein '42.*

University of Denver Reunion Big Success

The following letter was received from Leon Burchman, Tau Eta

We've read about it.

We've dreamed about it.

We've seen it unfold as dramas on T.V. and the theatre.

But never in our wildest dreams did we think this fantasy could turn into reality.

It did.

At 7:00 p.m., May 21, 1988, there was electric in the air. As we approached the elegant Plaza Hotel off Central Park, New York City, one sensed the anticipation of seeing and meeting Tau Eta (University of Denver) brothers for the first time in nearly 40 years.



(l-r) Harold Bernbaum (New Jersey), Dave Rabin (New York), Len Burchman (Washington, D.C.), Danny Kramish (Florida), Anwar Chitayat (New York — by way of Baghdad), and Herb Bailen (Florida). "The clock stood still for 25 TEPs on May 21, 1988. We were on a magic carpet for five hours where our 'return' to the University of Denver was a joyous occasion."

The Grand Reunion was, indeed, grand. Nearly everyone tried to anticipate what each other looked like. Was he bald, fat, skinny, cheeky? For the most part, mother nature was kind to us. The ravages of time certainly took its toll, but the bottom line "recognition factor" was a hefty 90% . . . not bad for four decades of absence.

Speeches were made, past memories were paraded front and center; blow-ups of old pictures of happy times at TEP chapter meetings, at socials, at living quarters serving as our temporary frat house. Smiles abounded in every picture shown. Brother after brother, in true good and welfare fashion rose to contribute a vital piece of the kaleidoscope that painted in broad brush strokes the memorable fabric of that microcosm of fraternity life that each and every one of us held onto for these past forty years.

Our brothers came with their lovely wives and families from: Pennsylvania; California; New Jersey; Florida, Connecticut; Colorado; Massachusetts; Canada; Washington, D.C.; and from many large and small cities of our host State of New York. One Florida brother offered to host the reunion spontaneously being spawned next year. Other hosts quickly followed suit. Most all of us were caught up with the excitement of the moment.

We enjoyed our night to remember, and softly shoved our future plans on the back burner. Tonight was reserved for the 25 couples who bathed in yesteryear and were afforded the golden "once-in-a-lifetime" opportunity to look back into those "mirrors of our mind" and relish those happy and trouble-free days.

For the most part our brothers acquitted themselves admirably, both in the professions and the business world. We became leading litigation attorneys, bank presidents, major builders and developers, insurance executives, corporate presidents, university presidents, university department heads, high-tech defense moguls and top U.S. Government officials — all a credit to the TEP format and TEP camaraderie.

In the short span of a handful of years, from the late '40's to the early '50's, 25 brothers of Tau Eta of Tau Epsilon Phi were able to bring back an era of auld lang syne. By magic, the transition to our fraternity days of 40 years hence was crammed into five sacred hours, which none of us will ever forget. A number of us will attempt to see one another during the golden years of our retirement. Others will wait for the call to reconvene. No matter how we meet, we *will* meet. That's that silent promise we made to each other when we said our "good-byes" on that extraordinary night of May 21, 1988.

Our brothers — one and all — extend our sincerest regards to our friend and mentor, Sid Suntag. We know he wanted to join us. He was well toasted for many more long and productive years on behalf of one of the great "caring" fraternities still in existence.

We owe a special debt of gratitude to Brothers Ronald Goldfarb, Herb Snipper, Dave Rabin, Burt Seidner and Anwar Chitayat for spearheading the Grand Reunion Event. With one wave of the wand, they again legitimized our founder's theorem, that the TEP experience is what "dreams are made of" . . . that our affiliation with TEP is a "life" contract which matures and ripens with the ever present running "sands of time."



'25 years later — Epsilon Phi Reunion, Penn State.

TEPs — Old and New — Gather to Celebrate the Fraternity's Growth



Kappa Zeta Phi (Northeastern University) reactivated in May Pining Ceremony (David Abrams '58 in back row).



Rho (Penn) Brothers at the new Chapter House for Home Coming. (l-r) Marty Bloom, '54; Bob Goldman, '55; Executive Director Myles Tanenbaum, '52; and Gary Oringer, '54.



Phi Beta (University South Florida) Brothers at the Reunion Picnic.

Alumni News and Notes

Brother Norman Rosenblatt, Kappa Zeta Phi (Northeastern '51) is Dean of the College of Criminal Justice, Northeastern University. He was formally Advisor to the undergraduate chapter for years.

Brother Ed Zeligson, Epsilon Mu (Lehman '73) is Associate Controller, McCall's Group of *Time, Inc.*

The **Arkins**, father **Murray**, Nu (Georgia '49) and son **Lawrence**, Nu (Georgia '82) are both physicians, Murray practices in Savannah and Lawrence is now a Resident in Ophthalmology in Baltimore, Maryland.

Brother Ira Brown, Epsilon Mu (Lehman '64) conducts an eminently successful practice of Criminal Law in New York City.

Brother Brian M. Kroker, Epsilon Eta (Drexel '80) is a Controller for Bell Atlantic Properties, Inc., a national real estate development firm.

Brother Victor Maslia, Mu (Emory '50) is a noted Atlanta builder and developer and has been elected to the Atlanta City Council.

Brother Michael Schlach, Epsilon Nu (R.I.T. '87) is Package Development Specialist with Nabisco Brands.

Brother Robert M. Flayman, Tau Alpha (Florida '85) was graduated from Nova Law School and will become associated with the Law Firm of Gunther and Whitaker in the summer of 1988.

Brother Stephen R. Silberfarb, Tau Beta (Maryland '84) is a registered lobbyist

for the American Israel Public Affairs Committee.

Brother Herman S. Weisman, Theta (Boston U. '50) is Associate Director, Licensing for E.I. DuPont de Nemours, Inc., Medical Products Department.

Brother Daniel Chazanoff, Tau Delta (Ohio State '45) has more than 30 years of experience as a music administrator, teacher, cellist, conductor, adjudicator, clinician and researcher. He holds a doctorate degree in music education, and makes his home in Rochester, New York.

Brother Fred Benamy, Mu (Emory '58) is Coach of the DeKalb Brats Under 18 Girls' Slow-Pitch Baseball Team from Atlanta, Georgia, that recently won the USSSA Championship. At the same time, Brother Benamy was named USSSA "Coach of the Year" in recognition of his expert handling of the DeKalb Brats.

Brother Steve Dorff, Nu (Georgia '68) has many credits for composing the music for films and television. Among them are: "Spencer for Hire", "Growing Pains"; "The Oldest Rookie"; "My Sister Sam" and many others.

Brother Mark Abramson, Epsilon Kappa (Tulane '73) National Convention '87 Grand Chancellor, is engaged to Ms. Lura Zelany, Delta Phi Epsilon sister and University of Georgia alumna.

Brother David Stolberg, Tau Alpha (Florida '86) was recently married to TEP Little Sister Amy Roth in Hollywood, Florida.

Chapter Eternal

Charles Mallen, Psi (Illinois) '53

Lester Ostrow, Omega (North Carolina) '36

Yvon Geoffrey Meyer, Epsilon Tau (Bradley) '88

Julius Kessler, Tau Theta (George Washington) '38

Jack Menashe, Epsilon Gamma (NYU Hts) '53

Norbert Fried, Kappa (Vermont) '54

Stanley Amelkin, Alpha (Columbia) '51

Dr. Henry Gozan, Alpha (Columbia) '39 (Former Chancellor)

Harold Shulman, Zeta Lambda Phi (Temple) '55

Allen Weisbord, Zeta Lambda Phi (Temple) '55 (Former Grand Council Officer)

Robert Snyder, Tau Gamma (U.S.C.) '66

Harry Schleifer, Beta (N.Y.U. Dent) '20

William Levinson, Sigma (Syracuse) '30

Arthur M. Sohcot, TAK (Lehigh) '69

Donald M. Sagman, TAK (Lehigh) '72

Jack Losow, Gamma (N.Y.U.) '49

Sam Silver, Phi (Georgia Tech) '34

David L. Cohen, Delta Upsilon (Duke) '60

Marty Fleischer, Sigma (Syracuse) '40

Dick Channon, Tau Upsilon (U.C.L.A.) '57

Michael Gusich, Epsilon Tau (Bradley) '87

Evans' Literary Success More Than Just a Story

Brother Eli N. Evans, Omega (U.N.C. '58), member of an extraordinary TEP family (his father is Past Consul E. J. Evans, who also served as six-term Mayor of Durham, N.C.; and brother of Bobby who was at one time Moscow correspondent for CBS television) has made an important impact on the literary community by writing the absorbing biography of one of the most interesting and powerful men in the short-lived government of the Confederacy, Judah P. Benjamin. Now in its fifth printing, the biography has been acclaimed in all reviews as a masterpiece in tracing the remarkable career of this most unusual man.

Mr. Benjamin served the Confederacy as Secretary of War, Attorney General, and finally Secretary of State in the administration of Jefferson Davis. He became known as the American Disraeli. Brother Evans, who is currently President of the Charles H. Revson Foundation, is no newcomer to the literary field — as some years ago, he wrote *The Provincials*, which traced the

story of the Jewish people in the southern states. This work was hailed at the time as outstanding, and it also became a best-seller.

Brother Evans now resides in New York with his wife and young son and — like his father and brother — is an alumnus of the University of North Carolina, where he was President of the Tar Heel Student Body. Incidentally, while he was serving the student body, he found time to be Chancellor of Omega Chapter. It was during his stewardship as Chancellor that the Chapter led the campus in all phases of activity.

Following his graduation, he served a two-year stint in the United States Navy as a reserve officer. With his service obligation completed, he attended Yale University Law School, graduating with honors.

Given Brother Evans' success in the literati, we can look forward to yet more best sellers coming off his pen in the future.

O'Brien Heads University of New Orleans

With the installation of BROTHER GREGORY M. ST L. O'BRIEN, Tau Alpha Kappa (Lehigh) '66 as Chancellor of the University of New Orleans, the TEP Fraternity can now boast of having several of its distinguished brothers serve as heads of important institutions of higher learning. The University of New Orleans is the youngest and fastest growing institutions of higher learning in the State of Louisiana, having been established in 1958. Its enrollment now numbers over 16,000 students.



(l-r) Bro. Greg O'Brien, Lois Versacci, Bro. Al Versacci, and Mary O'Brien. "It was a wonderful honor to be asked to join Bro. O'Brien for such an occasion." — Al Versacci.

In selecting Brother O'Brien to be its Chancellor, the University of New Orleans chose a man who has distinguished himself in every field of endeavor with which he has become involved. Even as an undergraduate at Lehigh, he early discovered that the existing fraternity system there held little attraction for him. He became determined therefore to organize a Greek letter group that practiced his ideal — true brotherhood. In short order, he gathered a group of students with similar views, and

Tau Alpha Kappa became a reality — with Greg, President. The only fly in the ointment was that the University forbade the group to go National. Nevertheless, under Greg's strong leadership, TAK not only persevered, but grew by leaps and bounds. It was at this time that TEP became involved with the fledgling fraternity with the tacit understanding that it would go TEP when allowed to by the Lehigh authorities.

Brother O'Brien subsequently left Lehigh and began his climb up the academic ladder; but when TAK was finally permitted to go National with TEP in November, 1967, Greg O'Brien travelled many miles back to Bethlehem to be present at the Chapter installation ceremonies. He was rewarded for his dedication and devotion in giving impetus to the establishment of the group and providing it the strong leadership it needed by being assigned TAK #1 in the TEP National Order of Seniority.

Brother O'Brien has held a number of important teaching and/or administrative posts since leaving Lehigh in such prestigious institutions as: Harvard Medical School, University of Michigan, University of Wisconsin, and Case Western Reserve University. In 1980 he became Vice President and Provost of the University of South Florida in Tampa. Shortly after assuming these important duties, he sought out the leadership of TEP's Phi Beta Chapter at that University, becoming its Faculty Advisor. At the TEP Convention in Orlando in 1987, he was elected a Trustee on the Board of TEP FOUNDATION, INC.

On March 11, 1988, in the presence of local and national academic dignitaries including specially invited Brother Al Versacci, President of the TEP FOUNDATION, INC., Brother Gregory M. StL. O'Brien was formally installed as fourth Chancellor of the University of New Orleans. A new chapter in the extraordinary career of this gifted brother has now begun. Not long after he arrived in New Orleans, upon learning that the Fraternity was in need of a Regional Governor for the Southwest, he graciously volunteered to assume that post — in addition to continuing as Trustee of the TEP FOUNDATION, INC.

Regional Governor's Profile

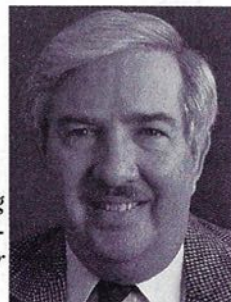
The Regional Governors system has been re-established to assist the Executive Director in administering the chapters in geographical regions.

BROTHER DAVID C. STEINBERG, Epsilon Eta (Drexel '65) whose District IV includes the chapters in the states of New Jersey and Pennsylvania served two terms as Chancellor of his chapter with extraordinary distinction and was honored by the National Fraternity by being awarded the Extra Curricular Activities Key. Recognizing his leadership qualities, he was appointed a Regional Governor by the Grand Council shortly after his graduation from Drexel. He served his constituency with dedication until the pressure

of a burgeoning business career forced him to resign in the late 1960's.

As a chemist, he is one of the leading specialists in the cosmetics industry, presently serving as National Treasurer of the Society of Cosmetic Chemists. He was also elected a Fellow of the National Organization in 1986. He is currently Sales Manager and Vice President of Sutton Laboratories, Inc. He also lectures on cosmetic chemistry at a number of universities in the past and is presently on the Graduate School Faculty of Fairleigh Dickinson University of New Jersey. He is an "Eminent Visiting Scholar" at Virginia State University, as well as a "Life Master" at bridge.

Bro. David Steinberg
Region IV -
Regional Governor



He and his wife, Helen, and their son, Jason, live in Chatam, New Jersey. Helen serves on the Board of the Raritan Valley Chapter of the Association of Retarded Citizens.

The old adage "you want something done, give the chore to a busy man," certainly holds true for Dave Steinberg!

New TEP Foundation Scholarships Established: Unique Scholarship Endowed

When Brother Dick Channon, Tau Upsilon (UCLA '57), passed away recently, the outpouring of grief by his chapter brothers and friends was so great and genuine that they vowed to memorialize him in perpetuity. A committee, headed by Brothers Marty Nadel and Barry Weinstock, Dick's schoolmates, was hastily formed to determine how best to accomplish this goal. Following several telephone calls to Foundation President Al Versacci in New York and Alumni Consultant Sid Suntag in Atlanta, the Committee, consisting of:



Dick Colvin, Jerry Monkarsh, Dave Schwartz, Phil Miller (all of Tau Upsilon) and Marty Katz decided to establish a scholarship under the auspices of the TEP FOUNDATION, INC., to be known as the DICK CHANNON MEMORIAL FUND.

The next important step was the raising of the funds for a significant corpus, the income from which would be annually granted to a deserving TEP student, who best exemplified Dick Channon's qualities of character. With the help of the Alumni Consultant, a simple letter was dispatched to all of Dick Channon's chapter brothers and friends. The results were astonishing — as in a matter of days — a meaningful sum of money had been raised, making certain that the annual scholarship

would be one of the most sought-after among the now 28 awards offered by the TEP FOUNDATION, INC., to TEP undergraduates.

Now — who was this Dick Channon who could command such affection and respect? Although a fine athlete, he was just another brother in an exceptionally unique chapter, who never held major office. Nonetheless, his warm sense of humor, his loyalty to his fraternity and its members, was of such magnitude that he could have been considered the most popular member of



Tau Upsilon chapter. In short — he was indeed "Mr. Congeniality," who was always ready to lend a hand, not only to his contemporaries, but also to the younger members as well. He was a man for all seasons, and his memory will live on through the laureates who are fortunate enough to be recipients of the DICK CHANNON MEMORIAL SCHOLARSHIP. What makes this scholarship so unusual is that scholastic attainment will not be the

determining factor in choosing the laureate each year. Instead, the criteria will be those qualities which made Dick Channon so well loved by all.

(In photo above, Dick Channon, #22, Barry Weinstock, 5th from right, standing.)

Scholarship Honors Past Consul

One of the most respected and hard-working alumni that TEP has ever known, Brother S. Earl Gordon, Tau Delta (Ohio State '34) has made a substantial contribution to the TEP FOUNDATION with the intent to endow an annual scholarship to be known as the S. EARL GORDON AWARD. The parameters and criteria for this latest annual grant will be developed in time for its offering during the next school year. As will be noted in the next paragraph, because of Brother Gordon's keen interest in the critical value of aggressive rushing, an element in the criteria to be adopted will undoubtedly by an applicant's proven rushing capabilities.

Brother Gordon needs no introduction. While an undergraduate at Ohio State, he was the perennial rush chairman for his chapter, travelling the length and breadth of Ohio in his auto every summer visiting

rushees to convince them that TEP should be their Fraternity.

Following his graduation from State, he became Regional Governor for Western Massachusetts and was chiefly responsible for the establishment of Tau Pi Chapter at University of Massachusetts. In the years that followed, he served on almost every Grand Council. In 1968, he was instrumental in the founding of the Phi Mu Chapter at the University of Hartford. In thanks for his continuing service, he was awarded the Lilienfeld Service Award in 1968 by the Grand Council.

His extraordinary career in TEP was capped in 1977, when he was elected Consul of the Fraternity, and he served until 1979 with distinction.

With the addition of the S. EARL GORDON SCHOLARSHIP, the TEP FOUNDATION now offers 27 grants to needy and worthy TEP students.



Bros. Denmark, Gordon, and Versacci

Tau Theta — George Washington University Rechartered

On the evening of Saturday, April 9, 1988 the Brothers and Pledges of the Tau Theta Colony at George Washington University gathered at the Mayflower Hotel in Washington for a truly momentous occasion. On that evening, alumni of the original chapter, representatives from TEP National, and nearby chapters met to celebrate the chartering of the reactivated GWU TEP Chapter.

Yet, in the spring of 1971, Tau Theta had closed its doors and went inactive after 332 men had entered the Portals of Tau Epsilon Phi over the Chapter's 39 year history. The TEP house located on G Street was sold to pay off the chapter's accumulated debts and the remaining brothers and alumni went their separate ways. Over the course of the 14 years that followed the Greek system at GW, and around the country, experienced some of the worst times in Fraternity history as chapters folded for lack of interest and membership. Although a few fraternities remained, TEP was one of several casualties which resulted due to the political, social and economic circumstances at the time.

The fact that Tau Epsilon Phi had thrived at George Washington for almost 40 years played a significant part in the decision to bring the Fraternity back to the University. Also TEP's strong foundation on the ideals of non-discrimination and a democratic organization attracted a group of undergraduates to Tau Epsilon Phi in their desire to establish a new fraternity at GWU.

On November 10, 1986 the first organizational meeting was held by a group of five undergraduate men attending George Washington to discuss the prospects of reactivating TEP on campus. Eventually, 28 men bound together and committed themselves to refounding the Fraternity. And on January 17, 1987 the National Grand Council authorized the Colonization of

Tau Theta at George Washington University.

Over the course of the months that followed, TEP rebuilt its reputation at GWU and their membership grew. The Colony worked with brothers from the Tau Beta Chapter at the University of Maryland to learn the Fraternity's teachings and develop their own internal organization and on April 26th the new colony founder's were initiated at the chapter house in College Park, Maryland.

Almost one year later, the new colony had grown and progressed enough to petition the National Grand Council for the reactivation of the Tau Theta Charter. And, in February of 1988 the petition was approved and the Fraternity's Charter was officially reinstated.

The resulting banquet brought back several alumni brothers from the 1960s and 70s including Brothers Terry Perl ('67), Edward Perl ('69), Franklin Levinson ('69) and Arthur Rettinger ('69) who presented the undergraduates with several relics from the old TEP house including the original stairway banister and bronze door plaque!

Brothers Leo Gordon, National Vice-Consul, Assistant Executive Director Jonathan Seidel, and Mid-Atlantic Regional Governor Ron Charpentier were on hand to formally present the Charter to the newly reactivated Tau Theta Chapter. And in his presentation speech to the Brothers and guests, Brother Gordon noted that occasions such as a Chapter's Chartering banquet truly reflect upon the poem "The Bridgebuilder" which is taught to every pledge and brother of Tau Epsilon Phi.

After 17 years, the "Bridge" has once again been repaired and due to the effort and dedication of the Tau Theta Brothers will allow young men to cross the threshold and enter the Brotherhood of Tau Epsilon Phi at George Washington University once again.



From the Editor...

In the last edition of the *PLUME*, we noted the many positive changes occurring within our National Fraternity. And, after six months in my current position, I am proud to say that we are well on our way to reaching the aggressive goals set for the Fraternity.

Not only does TEP have the opportunity to expand its base of chapters, colonies and undergraduate members, the National Headquarters now has the ability to more efficiently serve many more of our alumni, brothers and other constituents. We are in the process of instituting several programs which will enable our organization to grow both internally and externally on into the 1990s. And, the single underlying

factor pointing toward our success is the fact that with growth and expansion comes both new blood and a strengthening of the ties between our chapters, alumni and the overall National Fraternity.

On the programming side, this summer we have undertaken several major projects. Sidney S. Suntag, Executive Secretary Emeritus, and I have recently completed a revised edition of The Portals of Tau Epsilon Phi (our candidate manual) which will be printed and hardcover bound for distribution this fall. It is interesting to note that this is the first hardcover edition since the original was written and published in 1937 by then Executive Secretary Irving Klepper.

We are also in the process of revising the organization's entire set of Chapter Manuals and Publications.

All of the above mentioned materials are being prepared in time to be reviewed at our Summer Leadership Conclaves this July and August. I must say that the combination of our new Chapter Manuals, additional Field Staff, and the Leadership Institutes will provide a great deal of material from which our undergraduate brothers can learn.

In the future, we hope that as TEP continues to grow, many of our "lost" Brothers will come back into the fold and assist us in proving once again that Tau Epsilon Phi is indeed a Great National Fraternity.

On the Road with TEP's Director of Chapter Services

PLEDGE: "Who was that masked man?"

BROTHER: "I did not even get a chance to thank him."

If any of you have felt or said this during the past semester, please don't be confused. It was not the Lone Ranger, but someone better, it was your chapter service field representative. If you missed him don't worry, because he will again be visiting alumni as well as undergraduates during the coming semester.

The Director of Chapter Services and the Field Rep's are part of our National staff. They are chosen from the top graduating senior applicants in the Fraternity. As undergraduates, they have gained a working knowledge of the Fraternity from the National level along with their chapter experience. The position covers a diverse range of activities and sometimes requires a totally different job be done at each chapter. Travelling by region the field rep visits all the chapters, and meets with the officers, alumni, and the school's Greek advisor. The free time between meetings is for the brothers of the chapter to visit with and ask any questions of the field rep. After all the meetings, an evaluation of the chapter is prepared by the field rep for the chapter's use. We call the position chapter service, because we would like it to be just that, servicing your chapter.

Looking back at my first semester with the Fraternity as Director of Chapter Services, I had what could only be called an indescribable semester. In the few years that I have been a member of Tau Epsilon Phi Fraternity, this past semester has been more challenging and rewarding than I could have possibly predicted. Some visits were more enjoyable, longer, and more productive than others, but in each case when I left a chapter there was definitely a positive outlook for both the National Fraternity and our individual groups. During my travels, I was able to see new places and meet some really fantastic TEP men.

My time spent in meetings was both fun and educational and the stories and memories could never be duplicated on any other job, or at any other time in my life.

In the coming school year several goals have been set for the chapters and colonies. My plans are to help each group establish

new objectives for improving themselves or to reach those already set, and we are presently taking steps in that direction. To improve the service to the chapters, we have added an additional member to the field staff, Mitchell Weinstein, who will be out on the road with myself during the coming semesters along with Executive Director Bob Goldman and Assistant Executive Director Jon Seidel. This will enable us to spend more time at each chapter, providing help on everything from Rush and Recruitment to

Financial and House Management. We will also be able to visit longer with all the brothers and local alumni. This extra time will allow all of us to take notice and to pursue the strengths and downplay the weaknesses of each group. You can also help us by working with any new colony in your area. I will be visiting these colonies while in your area and any help from a motivated brother will be greatly appreciated.

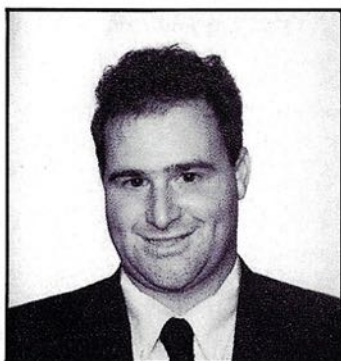
We all share the same three ideals. Friendship and Chivalry are both very important but it is Service that, "Stands Uppermost and is clear as the Heavens above." That is why we are all here and why I look forward to meeting and working with all of you in the next year.

A final note, I would like to thank all the chapters who gave me a t-shirt during my visit, especially to Lamda Phi Epsilon Chapter for the best all-around shirt design. Keep them coming! It is a collection that will always be cherished.



(l-r) Bro. Glenn Linder (Regional Governor with Ron Brooks for Epsilon Theta (Queens) Initiation at Hofstra.

WELCOME ABOARD



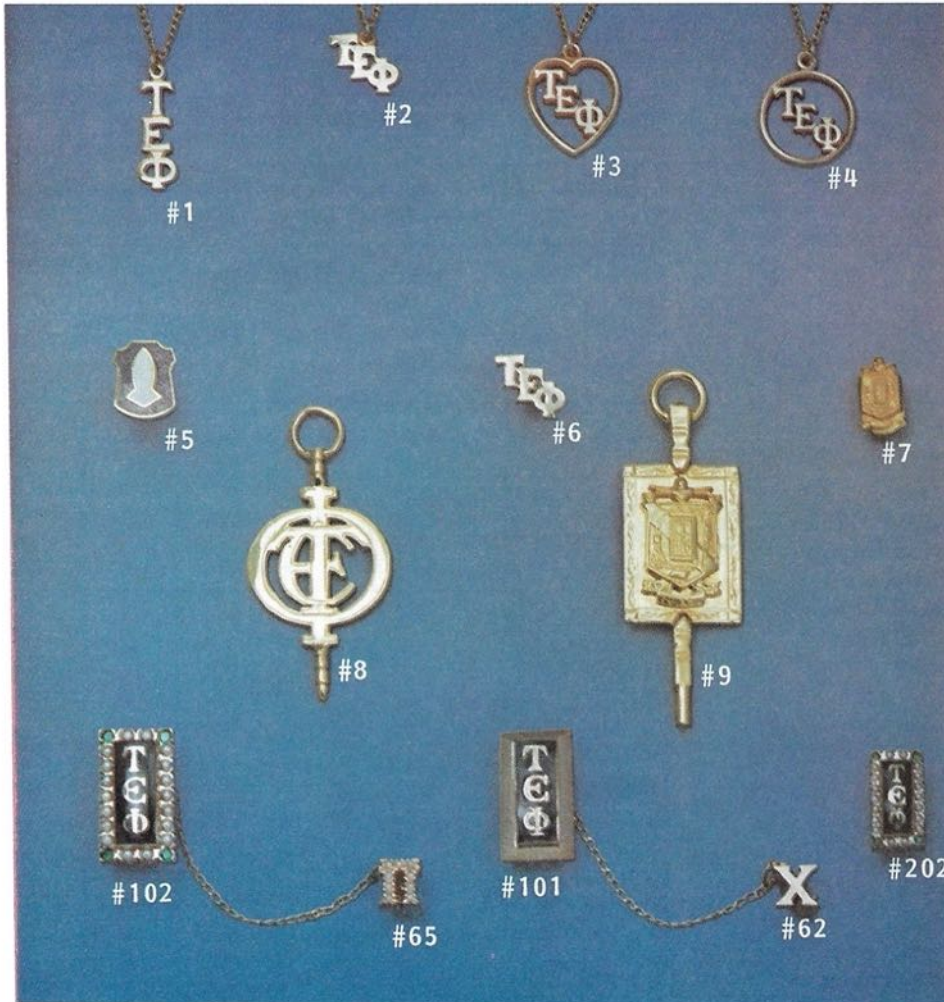
Mitch Weinstein

Brother Mitchell Weinstein, a graduate of Phi Beta Chapter at the University of South Florida, has recently joined the National Headquarters staff as a Field Consultant for the Fraternity. Mitch was initiated into Tau Epsilon Phi in February 1984 and served his chapter in numerous positions including those of Pledge Educator and Scribe and as a Committee Chairman. He was also awarded a National Fraternity Meritorious Service Key for outstanding work as a Brother of the Phi Beta Chapter.

Mitch also was distinguished as the Outstanding Senior Leader at USF, as the Outstanding Greek Leader for 1988, and is listed in the Who's Who of Students in American Universities and Colleges.

Born in Brooklyn, New York, Mitch grew up in Ft. Lauderdale, Florida prior to attending the University of South Florida where he was graduated in spring 1988 with a Bachelor's degree in Psychology. TEP is proud to welcome aboard Mitch Weinstein to his new position on the National Fraternity staff.

TAU EPSILON PHI GIFTS



Tau Epsilon Phi GIFTS AND JEWELRY

History Book	\$31.95
Neck Tie	15.00
Geographic	15.00
Tankards	8.50
Mugs	3.50

LAVALIERS AND KEYS

	Gold Kase	10 KT
1) Vertical Monogram	\$ 8.00	\$25.00
2) Staggered Monogram	N/A	25.00
3) Heart with Monogram	N/A	27.00
4) Circle Monogram	N/A	27.00
5) Pledge Pin	2.50	
6) Recognition Pin	10.00	
7) TEP Crest Pin	10.00	
8) Meritorious Service Key	34.50	69.00
9) Chancellor's Key	39.25	104.00
*Chain	3.00	
102) Brothers Pin	36.00	93.00

(Crown Pearls & Jeweled Emeralds)

202) Miniature Brothers Pin				75.00
Chapter Guards	1 Letter	2 Letters	3 Letters	
62) Plain Chapter Guard (Gold Kase)		12.75	14.00	15.00
62) Plain 10Kt		23.00	31.75	41.00
65) Jeweled Chapter Guard		49.00	67.50	86.25

*Higher qualities of Gold are also available on SPECIAL ORDER.

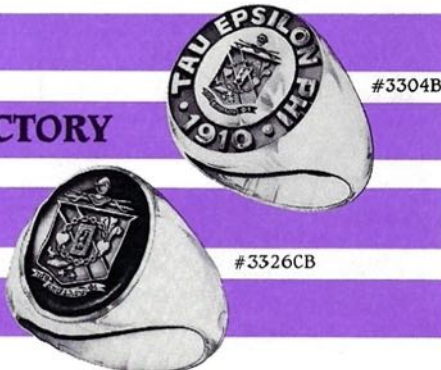
If interested in any of these gifts . . . please send check c/o Tau Epsilon Phi

Announcing new official **TEΦ** rings!

SPECIAL

INTRODUCTORY

OFFER!



All rings are crafted in 10 karat gold with the option of having your Greek letter chapter inscription on the side of the ring.

Balfour®

TEΦ Order Form

Special Introductory Prices	#3304B	Official Signet Ring	\$249.50
	#3326CB	Official Oval Black Onyx Ring with TEΦ Crest	239.75

Ship to:

Name (Please Print) _____
Address _____
City _____ State _____ Zip _____ Ring Size _____

Qty.	Style No.	Description	Price	Total
	#3304B	Official Signet Ring	\$249.50	
	#3326CB	Official Oval Black Onyx Ring with TEΦ Crest	239.75	

☐ VISA ☐ MasterCard

Card good through _____

Signature _____

*Full payment prepaid by check or credit card requested or 25% minimum deposit required on orders with deposit balance due C.O.D.

Mail Orders to: Balfour Co. - Fraternity, 25 County St., Attleboro, MA 02703

Net Sale	
Your State & Local Tax	
Shipping	2.00
Total	
*Less Deposit	
Amount Due	

TAU EPSILON PHI

DIRECTORY

THE TAU EPSILON PHI National Fraternity

Founded at Columbia University on October 19, 1910.

THE GRAND COUNCIL OF TAU EPSILON PHI

Executive Committee

Gerald A. Denmark, Consul
Steven A. Rich, Vice-Consul
Leo M. Gordon, Vice-Consul
Stuart Blumberg, Vice-Consul
Lawrence Leibross, Vice-Consul
Michael Berlinger, Tribune
Albert J. Schiff, Past Consul
Alfred C. Versacci, Past Consul

Members-at-Large

Mark Abramson
Donald Anspauch
Rick Barrett
Larry Baumwald
Harry Bernhard,
Regional Governor
Alan Goldsmith
Jeffrey Gordon
Harris Jacobs
Stanley Jacobs,
Regional Governor
William Yee
Harold Leviton
Glen Linder,
Regional Governor
Juan Medina
Steve Oster,
Regional Governor
Brian Hill
Paul Helwing

Dr. Gregory O'Brien,
Regional Governor
Ron Charpentier,
Regional Governor
Jeff Silverbush
John Smeyne
Rick Snyderman
David Steinberg,
Regional Governor
David Lazar
Edward Barry,
Regional Governor
Ted Bradpiece
Ron Lewis,
Regional Governor
Bill Warnoker,
Regional Governor
Howard Fish
Kevin Cranman
Matt Gewirtz

National Headquarters Staff

Robert S. Goldman, Executive Director
Jonathan M. Seidel, Assistant Executive Director & Editor
Grace Jenkins, Comptroller & Office Manager
Marie Garafalo, Administrative Assistant
Ronald V. Brooks, Director of Chapter Services
Mitchell S. Weinstein, Field Consultant
Sidney S. Suntag, Executive Secretary Emeritus and
Director of Alumni Affairs

THE TEP FOUNDATION, INC.

formerly the Tau Epsilon Phi Educational Endowment Fund

Alfred C. Versacci, President
Mark S. Kay, Treasurer
Eric Jonas, Secretary

Board of Trustees

Donald Anspauch
Jeffrey Atlas
Barry Berish
Richard C. Barrett, Jr.
Dr. Martin H. Belsky
Michael Berlinger
David Caplan
Charles Cumello
Gerald A. Denmark
Leo M. Gordon
Neil Gordon
Dr. Sheldon Grebstein
Adrian Harris

Sidney Haskins
Dr. Arthur Joblin
Harold Leviton
Larry Leibross
Sylvan Meyer
Dr. Gregory O'Brien
Howard Perlow
Stanley I. Schachter
Albert J. Schiff
Jeff Silverbush
John I. Smeyne
Gerald Whitman

Trustees Emeritus

E. J. Evans
S. Earl Gordon
Sanders Heller

Harris Jacobs
Seymour Weisberg
Leonard Wolfe

Tau Epsilon Phi Fraternity
3088 Mercer University Drive
Suite 200
Atlanta, GA 30341

Application to Mail
at 2nd Class Postage
Rates pending at
Atlanta, GA

PARENTS: Please forward this copy to your son if he is at school.