

# PLUME



TAU EPSILON PHI

FOUNDED 1910

INTERNATIONAL COLLEGIATE FRATERNITY GROUP

SPRING-SUMMER, 1983

VOLUME LXXIII

USPS 436260

NUMBER 5

## Message from Our Consul



With our first all-alumni fund raising drive in almost four years now past the halfway mark, I am happy to announce that the response has been overwhelming! When I became consul two years ago, I knew that the Fraternity had to involve the alumni so that the active brotherhood could receive the financial assistance that in the past had been so vital to its strength. With the help of the Grand Council Alumni Committee, a program was agreed upon which consisted of a three pronged drive that would reach everyone. First in the program was an appeal to all non Life Sponsors alumni for 1983 dues to the national alumni chapter; the second prong was to ask these same alumni as an alternative to annual dues to become a life sponsor of the Fraternity by a single payment of \$250 or in \$50 increments for 5 years. The third aspect of the drive was a select appeal to alumni for tax deductible contributions to the TEP Foundation, Inc., so that its trustees could, in this era of recession and sharply reduced governmental education assistance programs, increase our scholarship grants and loans to needy TEP Men.

The drive is now in its 6th month, and I am pleased to report all three programs of the drive have far exceeded our expectations. More than 1,500 alumni responded to the National Alumni Dues. About 600 have paid the life sponsorship fee in full or have entered the cycle toward life membership. Over 70 alumni have responded with substantial

contributions to the TEP Foundation. In a special category I, along with incoming Consul Albert "Buddy" Schiff founded the Consul's Club, and joining with us were the following past consuls; Brothers Louis Manes, E. J. Evans and Harris Jacobs. In this issue of The Plume you will find lists of those alumni who have paid the life sponsor in full, and those who contributed to the TEP Foundation. I must apologize in not listing all those who participated in the life sponsor program or who paid their annual national alumni dues. Our space is too limited for such a long list. It is hoped that future issues of The Plume will carry the names of those loyal brothers. To paraphrase Abraham Lincoln's famous quotation: "God must love basic dues payers because he made so many of them." I might add that TEP loves them as dearly!

The results of alumni support has already been put to work. We have increased the services to undergraduates and alumni; started to revamp all national publications and chapter manuals; enabled the central office to publish the Plume regularly; and above all give added financial security and stability to our Fraternity and its chapters. The added contributions to the Foundation have allowed it to increase assistance to needy TEP students.

To all those who have responded, as Consul of the Fraternity, I most humbly thank you: But our task is not complete. Our next major

drive is for the Fraternity and Foundation to purchase a computer. Among the advantages we will be able to provide you the alumni, are up-to-date mailing lists of all chapters, past and present. Our high speed printer will offer special mailings and letters at no cost to you. At the present, providing these services has cost more than \$5,000 a year. With our own installation the Fraternity and Foundation will be able to divert thousands for services to our chapters. In anticipation of this acquisition we are moving to larger quarters this summer and doubling our current size.

I firmly believe that through your efforts our National Fraternity has turned the corner and enters the next decade resolved to continue to provide you and your legacy, what our founding fathers envisioned almost three quarters of a century ago, "to serve for the love of service."

Fellow Bridge Builders, Thank You and God Bless You!

Fraternally,

Alfred C. Versacci  
International President  
Tau Epsilon Phi Fraternity





## "THE SECOND TIME AROUND"



Michael Ivers  
Executive Director

It has been thirty years since I graduated Syracuse University as a proud Sigma. Except for an occasional dues response, I had thought little of fraternities and how they have fared in the succeeding years. How ironic it is that as my son graduates from college this spring, I prepare, as your Executive Director to return to college campuses this fall.

The passage of time has brought many changes in our society, and the fraternity system has changed with it. The most meaningful change has been the discovery that the majority of the national fraternities have become truly democratic. The basic philosophy of our founding fathers back in 1910 has permeated the rituals of even the most restricted of fraternities that existed a generation ago. We as members of Tau Epsilon Phi can point with pride to the fact that we are one of a handful who were ahead of all the others, and that our non-sectarian ceremony has withstood the test of time. What worked then, works now, virtually unchanged in almost 75 years.

Granting the exceptions, the national fraternities were bled white during their mauling in the late 60's and early 70's. Indeed, many historic fraternities no longer exist. In TEP's case, some of our most treasured chapters were forced to close their doors due to the campus turmoil.

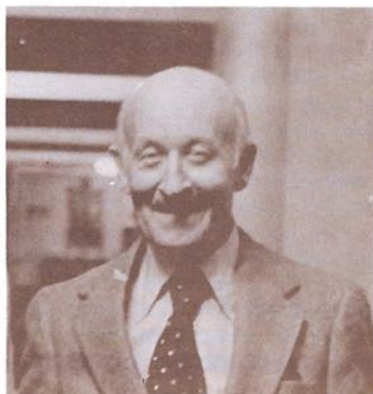
Today there is a revival of the fraternity system, indicative of the needs of not only our young men, but the nation as a whole. In this world of computers, numbers, and mass communication, there is a need by people to touch one another and share emotions . . . to share frustrations and heartbreak as well as happiness. It is especially true on college campuses that have grown cold through the facilities of impersonal communication. The stress factor for grade achievement has been made all the more intense as our current students struggle with word comprehension and basic math. Increasingly we are discovering the current generation of college people are receiving an education in the core curriculum that is inferior to the generation of their parents.

What is discouraging is that this current student population, so desirous of a fraternity system is staggered by chapter debts not of their own making. Most houses are in decrepit condition, and our National, like most others has exhausted a good share of its resources in just trying to keep its share of the

fraternity system alive for the past decade. Individual chapter strength is built on a triangle; at the base, your National Office: the two converging lines representing the Chapter and the Alumni. At National, we are making that commitment to aid these chapters, and I can assure you that the undergraduates are responding with an increasing amount of effort.

With few exceptions, it is not our classes we remember, but our communal life as Fraternity Men in College. Our young people need and deserve no less than that. It is up to you, the Alumni, the Bridge Builders, to give your assistance; for only with your help can we succeed.

Through your Fraternity you are investing in our future; not only the Fraternity's future, but the future of our Nation as well. Can we afford not to?



Sid Suntag

### FROM THE 'BALD EAGLES' ROOST Sid Suntag has his say

It is a fact of life among administrators of our colleges and universities that none can survive on student tuition and fees alone. Therefore, it is not surprising that all place their highest priority on alumni fund raising in order to meet the ever increasing deficits of

their respective operations. Even public supported colleges and universities have had to intensify their efforts to attract contributions from their alumni as tax dollars decrease in the face of growing need.

Why should the college fraternity be any different? It is after all, a quasi-educational system by the very nature of its mission; for in addition to supplying much needed housing and board for students, it provides "out of classroom" education for its members in social amenities, self-government, and business management. Additionally, it gives men, arriving on strange campuses, a place to belong and a group of decent men to associate with. It is therefore logical to say there is no difference. The college fraternity, TEP included, therefore must have the financial support of its alumni to provide the increasingly complex needs of its undergraduates in housing, management, and fraternity educational tools.

It is for this reason that I interrupted the work on my history of Tau Epsilon Phi last year to devote all of my spare time to helping Al Versacci and the present administrator of the Fraternity in the effort to raise meaningful funds from our Alumni. This vital area of activity had been dormant in recent years, and it was essential that it should be resumed so that TEP might move forward in a much needed revitalization program. Throughout this edition of the Plume you will discover that in the eight months of our drive, the results have been most gratifying: new chapters, increased membership, additional services provided . . . all this in the face of recession. In addition we have made funds available for chapter housing improvements, provided aid and assistance for individual fund raising for our chapters (resulting in over \$20,000.00 in direct aid). Our new Executive Director has spent well over 50% of his time out in the field establishing new lines of personal communication from our National Office.

I am extremely proud to have had a hand in this success, and want to thank the many TEP's who have responded to my personal appeal.

This drive will continue and will not end until all loyal TEP's are enrolled as either annual dues paying members or Life Sponsors. When this is accomplished, I will return to the writing of the history of our Fraternity which I hope will be published in time for our Diamond Anniversary in 1985. It has truly been an outstanding year for Tau Epsilon Phi, and I am happy to have been a part of it.

### THE PLUME

Published by the TAU EPSILON PHI FRATERNITY, Suite 344, 3272 Peachtree Road, NE, Atlanta, Georgia 30305. Second Class postage paid at Atlanta, Georgia. Annual subscription rate for members of the Fraternity is \$10, which is included in the dues.

Michael Ivers, Executive Director



## ALUMNI NEWS

# THE EDITOR WELCOMES ALL ALUMNI INFORMATION AND WILL BE GLAD TO PUBLISH ANY NEWS OF INTEREST

### CHAPTER ETERNAL

Bro. Milford Cohen (Tau Zeta)  
Bro. Stanley Youngman (Gamma)

We are deeply saddened to report the untimely death of Brother Charles Beaman, Sigma Epsilon 317 at Rutgers (Camden) University. Initiated at the age of 32, "Buddy" Beaman's short but happy contribution to his Chapter was honored at a Memorial service conducted by his Fraternity Brothers on May 17th.

**St. Thomas More Society** of Catholic Jurists recently honored Attorney Phillip Salny of Fitchburg. Bro. Salny (Theta) was presented with the Ecumenical Award. Bro. Salny's generous donation to the recently completed Lawyers Room at the Fitchburg Courthouse enabled jurists in Worcester County to enjoy their own spacious quarters. The donation was made in the memory of Bro. Salny's wife, Helen.

#### Excerpts from the Alpha Newsletter:

**Bro. Peter Ehrenhaft** was recently appointed to a study group considering improvement of U.S. - Japanese trade relations.

Mickey Winnick was a featured speaker along with Nathan Pritkin (of diet fame) at Columbia Dental School's Alumni Program. **Bro. (Dr.) Winnick** is Director of The Institute of Human Nutrition at Columbia P. & S.

**Bro. Stan Schacter** recovering nicely after minor (hernia) surgery. Also, congratulations on Stan and Ann's 25th wedding anniversary.

**From Mark Ruben news of a Tau Delt Reunion:** March of '83 was a special time for many of the old line Tau Deltas (Ohio State). A dinner, held in Miami, united many old friends, including former Consul Lou Manes and his lovely wife Ruth. Also in attendance were Mr. and Mrs. Bill Wasserstrom, "Lippy" and Ceil Lippman. "Chippy" and **Thelma Ross**, Sid and Natalie Pearlman, Stan and Julie Sackin, Mark and Janet Ruben, as well as Sid Klein and Mort Spitz. So successful was the meeting, plans are under way for another. Anyone interested, contact Mark Ruben, 10951 Collins Ave., Miami Beach, FL 33160.

**LEHIGH (Tau Alpha Kappa)** celebrated its 25th Birthday this spring with a fabulous reunion weekend. Attended by over 50 Alumni as well as distinguished guests, the "House OFF the Hill" continues to be one of TEP's most active and successful chapters.

To The Bridge Building Alumni goes much of the credit for establishing and helping maintain that great tradition.

**Brother Samuel J. Lefrak** (Tau Beta) was recently honored by the Brooklyn Philharmonic Orchestra on behalf of his cultural and civic amenity to the City of New York and the Borough of Brooklyn. Brother Lefrak's contributions to the enrichment of civic and social life of not only New York, but the entire country as well, would require a separate Plume edition just for him. As always Sam, you make us all proud.

**Our beloved Executive Director Emeritus**, Sid Suntag recently celebrated his 30th year of marriage to his wonderful and ever-youthful bride, **Flip**. On Saturday, April 9th Sid hosted some of his friends, many that bridge the almost 50 years of service he has given our Fraternity. Included in the guest list was our original Executive Secretary Irv Klepper (Tau Alpha) and former Consul Joe Gerson (Nu). Friendships and memories were rekindled far into the night, brought to a close all too soon with the first rays of dawn. Many happy returns to Mr. TEP and his wife, and a personal "God Bless You."

**Incoming International President** and Consul, Albert J. "Bud" Schiff has recently completed the most prestigious position in the life insurance industry: Chairman of the elite "Top of the Table" of the International Million Dollar Round Table. Membership is awarded to the top 1/10th of all professional life insurance producers in the world, and Buddy was chosen by his peers to be Chairman. The National Fraternity is indeed privileged to have Buddy serve as our next Consul.

**A tremendous turnout** of almost 100 brothers and guests of Georgia (Nu) Alums from 1965 to 1970 for a weekend-long reunion was a great success. Beginning with a cocktail party on Friday night, and ending with a Sunday brunch (all too soon!) each event was flawless. Many and much thanks go to Herb Wollner and Howie Hayman for planning this fabulous reunion. Executive Director Emeritus Sid Suntag was a featured speaker.

#### From Johns Hopkins (Phi Eta) Alumni Mailbag:

**Dave Greenfield** now on Faculty staff of Yale Medical School.

**Larry Daniels** '69 practicing law as a partner in Towson, MD., gives the following advice: "Don't Go to Law School! Get into Computers!" (Editorial comment: How right Larry is! Recent survey shows the lawyer population increasing at 3 times the rate of the country's population.)

**Frank Serio** teaching at University of Maryland School of Dentistry as well as maintaining his own practice. Hardly gives him enough time to keep up with the real estate and stock markets.

**Brothers John Smeyne and Ed Raskin** (Tau Beta) prove you can go home again... returning as Alumni Advisors to their Chapter at the University of Maryland.

**Arnie Schwartz** spearheaded a reunion of Kappa (University of Vermont). Bringing together old brother fraters from over a quarter of a century ago wasn't an easy task, but Arnie pulled it off. Editor knows you had a great time. All these reunions are worth the time and effort.

Bro. Harry Bergman (TA) ties the knot! Best wishes and congratulations.

Dave Golden (Omega) and his wife Harriet announce the birth of a future TEP, Andrew.

Former Director of Chapter of Visitation, Rick Snyderman managing one of the family stores in Sarasota.

Steve Wernick (E Phi) announces his marriage to former Judy Feldman. Steve's with the Dept. of Defense in Philadelphia.

Frank Katz (TA) married the former Jan Friedman of Savannah and now living in Atlanta, employed as a program analyst for Coca-Cola.

Gustav Freeman (Nu) retired as Professor of medicine at Stanford Research Institute. Bro. Sol Freeman (Epsilon) former Chancellor, and now retired in Scarsdale, (NY) 80 years young, while Dr. Bernard Freeman (Nu) still practicing Optometry in Atlanta.

Way to go, Fellas!

### A SPECIAL NOTE:

Brother Leo Gordon (Omega) and his wife Marci, President of Delta Phi Epsilon, announce the arrival of identical twin girls, Jenny and Sarah. Brother Gordon, a member of Grand Council, serves as Chairman of TEP Properties.

### ATTENTION ALUMNI

Part of our service expansion to you is our desire to help you with a reunion that you might wish to have. In addition to providing mailing lists, we can help you with invitations, as well as serving as your collection point with our prepaid, self-addressed mail envelopes. Why not contact us and we will help you organize either your class or chapter reunion.



CHAPTER HIGHLIGHTS

CHAPTER HIGHLIGHTS

CHAPTER HIGHLIGHTS

CHAPTER HIGHLIGHTS

CHAPTER HIGHLIGHTS

CHAPTER HIGHLIGHTS

CHAPTER HIGHLIGHTS

CHAPTER HIGHLIGHTS

CHAPTER HIGHLIGHTS

CHAPTER HIGHLIGHTS

CHAPTER HIGHLIGHTS

CHAPTER HIGHLIGHTS

CHAPTER HIGHLIGHTS

CHAPTER HIGHLIGHTS

CHAPTER HIGHLIGHTS

CHAPTER HIGHLIGHTS

CHAPTER HIGHLIGHTS

CHAPTER HIGHLIGHTS

CHAPTER HIGHLIGHTS

CHAPTER HIGHLIGHTS

CHAPTER HIGHLIGHTS

CHAPTER HIGHLIGHTS

CHAPTER HIGHLIGHTS

CHAPTER HIGHLIGHTS

CHAPTER HIGHLIGHTS

CHAPTER HIGHLIGHTS

CHAPTER HIGHLIGHTS

CHAPTER HIGHLIGHTS

CHAPTER HIGHLIGHTS

CHAPTER HIGHLIGHTS

CHAPTER HIGHLIGHTS

CHAPTER HIGHLIGHTS

CHAPTER HIGHLIGHTS

CHAPTER HIGHLIGHTS

CHAPTER HIGHLIGHTS

## Phi Sigma Chi Colony moves closer to chapter status

California Poly-Tech, founded 1982

No one ever said it was easy, and so we are still working on establishing our credibility as a group with the hope that we will attain Chapter status this fall. Newly elected Chancellor, Ron Charpentier succeeded founding President, Jesse Atilano and our membership continues to grow under his direction. Brother Steve Middleton continues to push and shove us toward additional community service in which we are proud to contribute. Chancellor Charpentier will represent us on our first Convention this summer and we are all eagerly awaiting his report and what it will be like to be part of a National Fraternity such as TEP. We may be the youngest, but we think we are the best.

## Tau Gamma shines brightly

University of Southern California, chartered 1926

As our financial strength grows, so does our spirit. Under the leadership of Jim Puttasuan and Tim McCleod, as well as the direction set for us by Bursar, Dan Eurich, TEP at USC completes one of the strongest years in a long time. A total of nine men were initiated this year, and we are busy planning a whole new Rush program for fall. We recently were praised by the Director of Greek Affairs Office as a model fraternity. In the past year we had the highest G.P.A. of all fraternities on campus and Dan Eurich graduates with a 3.83 G.P.A. this semester. We are proud to be the only completely integrated fraternity on campus with Hispanics, Blacks, Whites, and Orientals as a part of our brotherhood. Best of all, we have as one of our Alums, The Honorable Joseph Wapner, the Good Gray Judge of "Peoples Court." Fellow TEP's eat your hearts out, TAU GAMMA-27 is ours! If any of you are out this way, please stop by — we'll be open this summer.

## Lambda Epsilon stays on course

City College, chartered 1958

With eleven new initiates for the fall, and seven pledges this spring, City College of New York continues to thrive. As the only National Fraternity chartered and active on campus, we are growing stronger each semester, under the guidance of Chancellor Milton Swaby. This January we hosted National President, Alfred C. Versacci and our Executive Director, Michael Ivers and presented a firsthand report on just how deeply we are committed to TAU EPSILON PHI, as well as to ourselves. Both concurred with appreciation of our efforts. Alumni Rick Goldenberg and Juan Medina were also in attendance. With their help and guidance, the accomplishments of the year are a source of pride to all of us. We also hosted the Boston University Colony on a field trip, and they had a great time. We invite any and all to visit us.

## Nu has greatest "shipwreck" ever!

University of Georgia, chartered 1919

Sorry Alums, but you missed the best shipwreck of them all this spring! Almost 80 prospective Rushees came down for the weekend to join our thriving Brotherhood and Sweethearts for a fantastic weekend of Fun and Frolic. Original motifs decorated our lawn, music blared to entertain the Campus as well as guests, and our fabulous food was as usual, a knockout. We are especially pleased with the appointment of our new Alumni Advisor, Larry Baumwald. Larry, a local insurance executive, has been instrumental in helping us to obtain financing for an extended house improvement program. The NU-Housing Corporation has been reorganized, and is now headed by former National Consul, Harris Jacobs. Also serving will be Larry and Peter Pasternack. Peter was the recipient of the Jack King Memorial Scholarship in 1981, and the Sara and E. J. Evans Award in 1982. We look forward to working with this fine group of NU-Men who have volunteered to serve as our housing advisors. Things are looking great for fall, with Joey Schultz our new Chancellor pointing us toward our best Rush effort in many a Georgia year. Congratulations to our Brothers at Penn State for the National Championship. WE put up a good fight guys, but you are the "Champs."

P.S. Herschel sends his love. See you at the Convention! Best of all — Alums — we fixed the Bathroom! Love ya!

## Tau Zeta renovating house

University of Maine, Orono, chartered 1929

Tau Zeta is continuing its house renovation. We have repainted the house on the outside, completed our Alumni Room (best bar in town) and refurbished our living room. All this, plus new roofing makes us feel that TEP at Main is going strong. We have inducted two great pledge classes as Tau Zeta completes one of its best years in many a moon. Aided by a long-time Alum, Harvey Hillson, and newly appointed advisor, Chuck Stone, we have become more and more involved in raising funds for the Ronald McDonald House at the University Hospital Center, as well as raising other charity funds through our Swing-A-Thon. Feelings are running high for a super '83-'84 and with all our improvements, it should be one of our greatest HOMECOMING'S in years. Don't miss it!

## Delta to host regional conclave

Cornell, chartered 1913

TEP's oldest existing chapter will host a Fall Regional Conclave during the last weekend in August. Eager to host our brother Chapters, Chancellor Joey Asher accepted National's invitation to provide the focus of an intensive two-day RUSH SEMINAR to be held August 26th and 27th at the Chapter House



REGISTRATION \$15.00 per man. SEE YOU IN AUGUST!

Pennsylvania State University, chartered 1963

Surprising even themselves, TEP's at Penn State had the greatest results in many a year, and thereby guaranteeing that next year's house occupancy the largest in memory. Not only are we proud of our new numbers, we are equally proud of our quality. Our Little Sister program also contributed to much of our success. With an ever increasing membership, we look forward to fall '83 with a great deal of confidence. Our newly incorporated Alumni Organization is working hand in hand with National to create a viable assistance input to our expanding numbers. Our Special Thanks to the Alums who supported the building fund.

New Jersey Institute of Technology, chartered 1947

The "lavender hill mob" from lovely downtown Newark made a number of house improvements this year. In addition to a new roof, the ceilings were insulated and new storm windows installed. Also added were a new washer and dryer. Homecoming had an excellent turnout and we are encouraged enough to even invite them back next year — just kidding guys! Like the National Fraternity as a whole, Tau Psi enjoyed the best year in a long time.

Husson College, chartered 1969

In less than 8 months, HUSSON COLLEGE, Bangor, Maine, TEPmen have rebounded in a great way. Active in Campus and Greek Affairs, Omega Upsilon Chi has emerged as leader in sports, service, and best of all, an astounding 3.1 G.P.A.! Special thanks go to the inspired leadership of Chancellor Eric Hall. The administration is permitting a fall rush for the first time. Our goal: Double our size in '83. At Husson, "TEPS are TOPS"

## Clarkson College, chartered 1968

Our new annex has just been completed, increasing our badly needed living space by almost 20%. Built by the brothers themselves (it helps to be an engineer), the new annex boasts comfortable quarters with a fully covered (and heated) connecting passage to the main house. Confided Chancellor Rick Cerruto, "We needed that!" We have just installed our largest pledge class in history. Looking forward to fall (except for the weather), Lambda Phi Epsilon expects another banner year at "the house on Sisson Street."

Bradley University, chartered 1962

As we enter our third decade, TEP continues to be one of the great fraternities at Bradley University. In the areas of academics, community service, athletics and social life Epsilon Tau has set the standards for the year. Our total number of new brothers this year is 23. We have recently obtained a favorable loan from National to have new siding put on our house and contracts will soon be let for rewiring our entire house. Financially we are stronger than ever, and next fall looks like it will be a continuation of that. Chancellor Ed Barry handed the gavel over to Ken Kunin, who will be our representative at the convention. Kunin promises NOT to become the fraternity drunk on the S.S. Veendam, but welcomes all challengers. We're lookin' good, we're feelin' good, and by God, we are good!

Johns Hopkins University, chartered 1959

After closing out last year with four successful Sunday evening parties (the police came every time), we decided to move our parties to Saturday night so that we could be sober by Monday morning. This year, TEP at Johns Hopkins is again the fraternity everyone else on campus compares themselves with (you know — like Coke, ever go into a bar and ask for a rum and Pepsi?). The TEP football machine, led by Slingin' Ernie O'Brien, Bigfoot Amalfitano and Brian "The Killer" Booth has finished 10-0 on the way to another championship season. A campus sorority threw a party for just freshmen women and Phi Eta Eta Brothers, which was very successful (they paid, we . . .). GOOD LUCK to all chapters, even Epsilon Eta. We haven't forgotten our toilet seat. To all chapters, don't judge us by the fact we're in Baltimore.

Hofstra University, chartered 1969 — rechartered 1983

It wasn't easy, but we did it. Hofstra University has recolonized and rechartered all in the space of 16 months! Our Sigma Alpha Sigma pledge class became 16 new brothers to bring our total to 38, and we are now on our way. We won the Greek "feud" contest and also formed a new group of Little Sisters. Our

(continued on page 8)

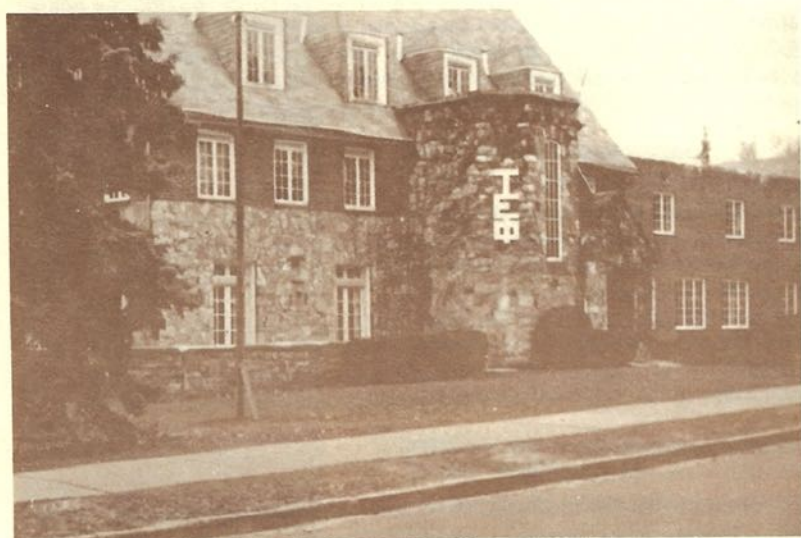




Clarkson College of Engineering



Omega Upsilon (Husson College). Brothers who helped compile an astounding 3.1 G.P.A.



Penn State University



Bro. John Green (Rho Delta Rho), National Treasurer, presents the First Annual Albert J. Schiff Loving Cup and Coat Rack to its first recipient, "Bud" Schiff. This trophy to be annually awarded on a rotating basis to the TEP who does the most to incur the wrath of the Delta Phi Epsilon Sorority. In his acceptance speech, Bro. Schiff (Omega), who will soon become our International President, was "speechless!"



Cornell





Eric Robinson of Phi Beta, University of South Florida, recently voted Tampa Bay area's winner in Tootsie Look-A-Like contest. Ed. Note: Your gorgeous, Eric, baby.



Recent Tau Gamma initiates.



From TEP undergraduates all over America to our Alums: "Thanks for your help!"



Syracuse University



U.S.C.



Phi Eta Chapter at Johns Hopkins University. America's future doctors and research scientists in a moment of leisure that befits their future calling.



CHAPTER HIGHLIGHTS

CHAPTER HIGHLIGHTS

CHAPTER HIGHLIGHTS

CHAPTER HIGHLIGHTS

CHAPTER HIGHLIGHTS

CHAPTER HIGHLIGHTS

CHAPTER HIGHLIGHTS

CHAPTER HIGHLIGHTS

CHAPTER HIGHLIGHTS

CHAPTER HIGHLIGHTS

CHAPTER HIGHLIGHTS

CHAPTER HIGHLIGHTS

CHAPTER HIGHLIGHTS

CHAPTER HIGHLIGHTS

CHAPTER HIGHLIGHTS

CHAPTER HIGHLIGHTS

CHAPTER HIGHLIGHTS

CHAPTER HIGHLIGHTS

CHAPTER HIGHLIGHTS

CHAPTER HIGHLIGHTS

CHAPTER HIGHLIGHTS

CHAPTER HIGHLIGHTS

CHAPTER HIGHLIGHTS

CHAPTER HIGHLIGHTS

CHAPTER HIGHLIGHTS

CHAPTER HIGHLIGHTS

CHAPTER HIGHLIGHTS

CHAPTER HIGHLIGHTS

CHAPTER HIGHLIGHTS

CHAPTER HIGHLIGHTS

CHAPTER HIGHLIGHTS

CHAPTER HIGHLIGHTS

CHAPTER HIGHLIGHTS

CHAPTER HIGHLIGHTS

CHAPTER HIGHLIGHTS

fund raisers produced income of over \$1,000. We fielded teams in intramurals and were competitive. All this with a group that was less than a year old! We have already established our presence here at Hofstra and expect that after another successful Rush this fall, we will be number one on Campus.

### **Tau Alpha Kappa has fabulous anniversary celebration**

Lehigh University, chartered 1967

Our Twentieth Anniversary celebration was a smashing success, and we were proud to host so many interested alums and friends. The year has been good to us here at Lehigh. We have 16 fine new pledges and we all have great hopes for them to continue the traditions that were created by our founding fathers twenty years ago. We are equally proud of our house management, for while some houses struggle with their deficits, Tau Alpha Kappa was congratulated by the FMA as coming in with one of the lowest cost-per-person food plans on the hill. Special "kudos" go to "Chuck" Rackie and the stewards for the past three years. Our Little Sister program continues to grow, and we are proud of their contributions to this year's outstanding accomplishments. After years of legitimate complaints, the University is finally doing something about getting things done for our house. This includes roof repairs, exterior repairs, new tiles on the sunporch, and some needed foundation repair. They have even begun to draw up plans for bathroom renovations and the installation of new ceilings. Hallelujah!! We've had a damn fine year; one that our graduating seniors can remember with pride and fondness in the years to come.

### **Psi plans 1000 Celebration this summer**

University of Illinois, chartered 1924

With Chancellor Jeff Gordon ably assisted by the Brotherhood, we have just completed one of our best years in recent memory. Countless improvements have been made to the grand old house on Armory Street and the "Old Gal" looks just great. Two successful pledge classes are making outstanding contributions to our rich legacy. Planning to inaugurate the fall semester a little early, the Brothers of Psi are planning a Gala Event in Chicago this summer and look forward to seeing hundreds of Alumni at Psi's 1000 Celebration. To those almost 1000 who came before us, the Brotherhood takes this opportunity to thank you and hope you will join us this summer for our formal event when we initiate Psi 1000. Invitations will shortly be forthcoming.

### **Epsilon Eta has a "BANNER" year**

Drexel University, chartered 1955

Epsilon Eta Chapter is experiencing a banner year. After a successful fall Rush (we recently initiated 18 new brothers), we already have 13 new pledges for spring. With only 22 Brothers graduating, we will be in great shape this fall. By winning our last bowling match, TEP won the Drexel Inter-Fraternity Cup for Excellence in sports. This is the first time we have ever won, so you can be sure the celebration will last, and last, and last . . . We are in strong running for the Dean's Cup which is given to the fraternity at Drexel with the best values of Greek Life; including academic, athletic, leadership, and community service. We have already received a letter of commendation from the University for taking part in the recent Phone-A-Thon fund raising drive in behalf of the school.

### **Sigma the comeback story of the year!**

Syracuse University, chartered 1922

In a desperate attempt to halt the continuing decline of our Chapter House, Sigma Brothers mounted a massive Phone-A-Thon campaign to their almost one thousand alums. The results were gratifying, and many thousand of dollars were raised through the unprecedented generosity of the Alumni. With added assistance of the National Office, repairs were begun in the middle of our Rushing Season. The combination of National Support, Alumni generosity, and determination of the brotherhood made us ready and the results were spectacular. We have doubled our membership, thereby giving us a solid financial base to be self-supporting for the first time in years! Our membership is the highest in a decade, and we are confident that with an equally great '83 Rush, Sigma will be close to 80 in number, the largest the chapter has been since the Golden Days of the 50's. House repairs are still going on during the summer, and along with our newly finished bathrooms, the new fire safety and alarm system will be installed. House cleaning, painting, new lighting and wall and ceiling repairs are almost complete. Next fall, plans are already in the works for fixing over our kitchen. Socially, because of our success, we have had fun . . . I mean Oourreally fun. Our parties have brought visits from Chapters at Rochester, Cornell and Clarkson. Credit for keeping our 63-year-old Chapter goes to many: the brotherhood who buckled down and tightened their belts; to National, who went along with us for the hundredth time; and most of all, to our understanding Alumni who responded with encouragement and money. Special thanks go to Brothers Chet Soling and Al Schragis for their outstanding donations in the Alumni Campaign. Space doesn't allow us to thank everyone who helped, but again, from all of us to all of you, THANKS!

**Are your chapter highlights missing?**

**Have your scribe contact our office for Plume article forms.**

**They're easy to fill out and we will write your article for you.**



# BROTHER 'RED' AUERBACH RETIRES FROM BASKETBALL

## Past TEPMAN OF THE YEAR-leaves enviable record

As Coach of the Boston Celtics, he retired in 1966 to become the General Manager. Brother 'Red' Auerbach, Tau Theta, George Washington University '39 established a level of excellence no one in any sport, be it amateur or professional, has ever closely approached. Included in his record of 938 wins was an extraordinary eight championships in a row. Along the way, Red managed one other. It is no wonder that in recognition of phenomenal achievement in his chosen field of endeavor, his Fraternity, of which he has always been a loyal member, undergraduate and alumni, chose him to be "TEPMAN OF THE YEAR, 1967," and he was awarded with

this most distinguished of all TEP Awards at the 57th Anniversary International Convention of the Fraternity at Grossinger's Hotel and Country Club in September of 1967.



Brother Auerbach's record of achievement did not end with his move "upstairs." As General Manager of the Celtics, he continued to astound the basketball world by directing the acquisition of player personnel that resulted in further astonishing success for his teams, including five more World Championships.

To quote Bill Gearon, President of the Atlanta Hawks: "'Red' Auerbach is a genius at the Pro (basketball) level and I haven't seen that from anyone else."

It is hard to think of pro basketball without the Redhead on the sidelines of the Celtics, or making deals that could bring outstanding talent to his team. Although he is 66 years of age now, he is just as sharp as he was 17 years ago when he quit coaching. However, he has no more fields to conquer, he has done it all. TEP is justly proud of one of its favorite sons. Lean back, light your cigar, and enjoy your retirement 'Red'!!

## TWO GEORGIANS ATTAIN NATIONAL PROMINENCE

### CONGRESSMAN ELLIOTT LEVITAS



was preparing to take the lead to protect the Chattahoochee. Fighting Interior Secretary James Watt and company is no easy task, but by introducing new legislation to protect the CRNRA, Rep. Levitas has again shown us he's equal to the challenge.

Levitas' efforts represent an exemplary response by a dedicated public servant to the wishes of his constituents. Any congressman who discharges his official duties in such a manner is a man of whom all Georgians can be proud.

W. E. MANKIN

Atlanta

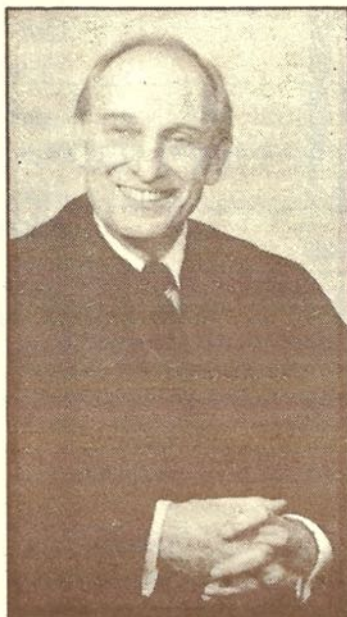
In preparing an article on Brother Elliott Levitas for this edition of the *Plume*, I recently read a letter to the Editor of the Atlanta Journal by W. E. Mankin. We have decided to reprint it in full. Perhaps, we might add, all Americans can be proud of Elliott Levitas, MU 116 and former Chancellor. To those of you who know and love our Chattahoochee River it was a job well done. To the many who heaved a sigh of relief upon the departure of Ms. Burford and Ms. Lavelle as well as almost two dozen others, Congressman Levitas has served us all and was one of the most effective congressmen to serve in this session of the Congress.

Reprinted from Atlanta Journal.

The Editors: Most of us would expect Georgia's congressional delegation to work toward those goals Georgians consider important. And we would certainly expect our own congressmen and senators to support an effort to rescue the threatened Chattahoochee River National Recreation Area (CRNRA). But real initiative, courage and leadership are still something special.

Georgia Rep. Elliott Levitas has recently displayed all of these qualities. Even as he led the charge to ferret Ronald Reagan's skeletons out of EPA's closet, Rep. Levitas

### CHIEF JUSTICE ARNOLD SHULMAN



Judge Shulman

He's a southern gentleman, polite, genteel and although he has a quick wit and an always ready twinkle in his eye, his very presence commands authority. He is Judge Arnold Schulman (NU 92). His election as the chief judge of the Court of Appeals makes it another step in his ascent upward, and is a great source of pride for TEPmen all over the nation.

Judge Schulman's election was a first for the court system. Shulman was not the original man for the job, but presiding Judge William McMurray, Jr., the next judge in line asked the court to defer his election and appoint Shulman instead. The court did just that and he was elected unanimously. In addition to his wide and varied activities in the Atlanta Community, Shulman is also involved in the religious aspect of the Jewish Community. Asked if there was any hesitancy among his colleagues to make this a Jewish "first," Shulman has no doubt that the court elected him purely by merit. "I'm pleased to say that the judges didn't even think of this. In all my years on this court, I have never seen a trace of anti-Semitism (among my peers). Almost fifty years ago, when in college, my fraternity Tau Epsilon Phi taught me a creed to live by: 'To judge our fellow men not by their rank or wealth, but by their worth as men.' Written 75 years ago, it is as true today as it was then, and I am pleased to note that not only is it the code of my fraternity brothers, but thank God, a creed which most men live by today."

Shulman, a native Atlantan, proudly states that his roots go "way back in Georgia." Boasting that his children make up the fourth generation of Shulmans to attend the University of Georgia, his office is decorated wall-to-wall with Bulldog mementos. Brother Arnold is especially proud that his son Warren was also a Numan.

At age 68, Judge Shulman is still going strong, and we at Tau Epsilon Phi are justifiably proud of NU 92.



# NATIONAL IS THERE FOR YOU



David Dlugie, a new member of our Board, has some comments about our meetings. These are refreshing and recommended. I trust you will enjoy this article.

Sander W. Heller  
President TEP Foundation

As my two-year term as an undergraduate member-at-large on the Grand Council draws to an end, I find myself reliving the Grand Council meetings in Atlanta, Philadelphia, Boston, and Baltimore. I have learned — and benefited — from "National" and I'm now going to try to encourage your participation in National by giving you the who, what, how, and why of the, National Fraternity.

**Who** makes up the National? Most brothers know about the Executive Director, Mike Ivers, and what he does. Working with Mike is a strong team of concerned alumni — whose sole aim is to see that Tau Epsilon Phi Fraternity continues to grow and prosper. Each member was a TEP at one of the many chapters across the country. These members meet throughout the year, at their own expense, and make the decisions necessary to keep TEPs functioning properly.

**What** does National do? The National Fraternity provides the organization with the consistency it needs to function from year to year. Unfortunately, too many brothers believe TEP is just something during one's college years. It wasn't until my first convention, at Orlando, Florida in 1979, that I realized TEP continues long past graduation. Members of National oversee and encourage the various activities of the chapters throughout the country. When things are going great — winning an intramural championship, raising money for a charity, or doing well scholastically — National is there ready to heap praise on the chapter. When a chapter is having some problems — be it physical repairs, problems with the university, Rush techniques, or even performing the initiation ceremony properly — the same National is there to help. Through good times and tough times, National is behind each and every chapter that displays the letters Tau Epsilon Phi.

**How** does National function? The National fraternity is divided into three parts. The *Grand Council*, of which I was a member, is similar to a Board of Directors in an organization. It is responsible for making the decisions that are necessary for the well-being of the fraternity. *TEP Properties* is the party responsible for managing the properties (both the houses and land) that the fraternity owns. The *TEP Foundation* is the organization that provides undergraduates with scholarships and loans to continue their college education. It not only takes a great deal of time and effort

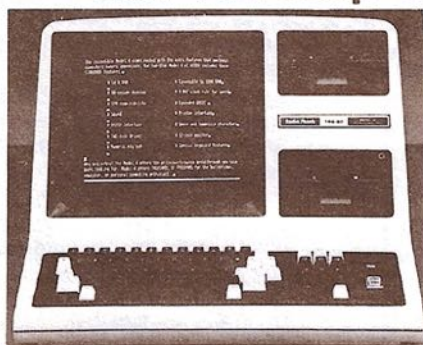
to provide all these services, but also it takes money. This money comes from us, both alumni and undergrads. Every penny of dues and donations that is sent to National is used to improve the TEP chapters all over the country. That is why it's so important that initiation fees, head tax, and alumni dues are paid. This way the money will be there for your chapter when you need it.

**Why** is there a National? A National Fraternity exists because it can provide resources, both human and financial, that a local fraternity cannot provide. One of the many benefits of being a national fraternity is that you can call on others to help out. National is there to provide the direction and assistance during troubled times. Why do people serve on National? The answer is in "The Bridgebuilder." The alumni that serve National remember the experiences they had while being a fraternity member. These memories live on forever, and they want others to share in the experience of being in a fraternity. Remember, we must continue to build that bridge for those who follow — "Good friend, I am building this bridge for him."

**In closing**, I wish to thank the undergrads for the opportunity to serve on the Grand Council and represent you at these meetings. I encourage all of you to attend convention and elect the alumni and undergrads that you want to run our fraternity. Let's all work together to make the saying "TEPS ARE TOPS" true on every campus!

David R. Dlugie, Psi 906

## Can You Help Us Make a Dream Come True?



TEP needs its own computer system — 40K Name Alpha List — 5M character storage. Hi-speed quality printer.

Contact TEP Foundation, Inc.  
(tax deductible) at:  
3272 Peachtree Road NE  
Atlanta, GA 30305

## TEP NEEDS THE BEST MEN!

Please send your rushing recommendations to the Tau Epsilon Phi Executive Offices.  
No postage required, just fold, seal and mail

Name \_\_\_\_\_  
Address \_\_\_\_\_

College Entering \_\_\_\_\_  
Comments \_\_\_\_\_

Brother's Name \_\_\_\_\_

Name \_\_\_\_\_  
Address \_\_\_\_\_

College Entering \_\_\_\_\_  
Comments \_\_\_\_\_

Chapter \_\_\_\_\_





# DO BUSINESS WITH BROTHERS

## BEGINNING WITH OUR WINTER ISSUE WE WILL REPRODUCE YOUR BUSINESS CARD AS AN ADVERTISEMENT

*Beginning in Fall 1983's Edition*

### A NEW AND LARGER PROFESSIONAL DIRECTORY!

Beginning this fall, The PLUME will have a full-time Editor for future publications. It will mark the first time in over a decade that we can now assure you a continuous publication on that basis.

The PLUME offers you the following choices:

- |   |                                    |          |
|---|------------------------------------|----------|
| 1. Directory Listing (4 lines) (Four Editions) .....        | { Includes Fraternity Dues } ..... | \$ 75.00 |
| 2. Reproduction of your Business Card (Four Editions) ..... |                                    |          |
|   | { For 1983-1984 } .....            | \$150.00 |

The PLUME will guarantee a circulation in excess of 40,000! It will be circulated to our most influential and affluent members throughout the United States. Distribution includes our Fall Souvenir Convention edition and our ALL-Member edition published in the winter.

Interested? Detach this coupon (your address is already on the reverse side) and mail to the Executive Offices.

To Editor, PLUME QUARTERLY  
MAGAZINE

Yes! I am interested in advertising in the PLUME. \_\_\_\_\_

I am enclosing my: ☐ Directory Listing Information ☐ Business Card

☐ Bill me ☐ Visa/Master Charge No. \_\_\_\_\_

☐ Check enclosed.

(Please make your check payable to: The TEP Foundation)



## LIFE SPONSORS - 1983

Bernard Abrams	Theta
Ben Alperstein	Tau Beta
Stanley R. Bandur	Rho Delta Rho
Richard C. Barrett	Tau Gamma
J. Edward Beach, Jr.	Epsilon Mu
Jeremy Berg	Tau Epsilon
Bernard H. Berkman	Tau Alpha
Dr. Bruce L. Bigman	Tau Zeta
Robert E. Blair	Delta
Richard Byer	Kappa Delta
Harlan Capin	Tau Gamma
Stephen E. Cohn	Epsilon Eta
Dr. Roberts A. Collins	Tau Alpha
Richard L. Curtis	Epsilon Phi
Judge Albert S. Dubbin	Tau Alpha
Roberts S. Elias	Epsilon Eta
Robert N. Evans	Xi
Thomas M. Figlio	Epsilon Eta
Howard B. Freedman	Delta
Philip F. Friedman	Sigma
Reid Friedman	Mu
Dr. Benjamin P. Geller	Epsilon Rho
Harry Gittelson	Delta
Joseph Godles	Delta
Barton S. Goldberg	Tau Xi
Robert Goldman	Rho
Morton Goldsmith	Psi
Merle A. Greenwald	Tau Delta
Jerome Hertz	Mu
Dennis Hill	Tau Pi
William Israel	Tau Mu
Ferman L. Jay	Nu
Abe Kamenoff	Tau Alpha
Alan M. Kameron	Tau Alpha Kappa
Howard M. Katz	Epsilon Phi
Lawrence W. Kevy	Phi Gamma
W. Henry Kofol	Delta Upsilon
Steve Levin	Epsilon Tau
S. Robert Levine	Delta
Alan M. Levy	Nu
J. Wayne Lindauer	Mu
Berry D. Locke, Esq.	Tau Gamma
Sid Marantz	Tau Gamma
Robert H. Marino	Rho Delta Rho
Tobias Massa	Phi Upsilon
James Mahoney	Tau Omega
Maurice Mauner	Epsilon Psi
Steven Miller	Epsilon Omega
Judd Missner	Psi
Dr. Barry T. Mitzner	Nu
Mark J. Neiman	Xi

Bernarr A. Newman  
 Ronald Owens  
 Jeffrey N. Perlow  
 Gene Rosenbaum  
 Bernard A. Rosenberg  
 Lawrence Rosner  
 Dr. Louis Scharff, III  
 Paul S. Sheeler  
 Jack F. Shorstein  
 Samuel R. Shorstein  
 Eugene D. Thomas, III  
 James Wechsler  
 Louis I. White  
 Douglas M. Wieder  
 James W. Wilkes  
 Ted. P. Wittner  
 Dr. Steven A. Wolf  
 Alan S. Wolkin  
 Robert A. Yetter

Delta  
 Zeta Lambda Phi  
 Tau Beta  
 Tau Alpha  
 Alpha  
 Phi Gamma  
 Nu  
 Delta Tau  
 Tau Alpha  
 Tau Alpha  
 Tau Alpha Kappa  
 Epsilon Delta  
 Mu  
 Epsilon Kappa  
 Theta  
 Tau Alpha  
 Epsilon Kappa  
 Mu  
 Mu

Clement J. Wohlreich  
 Walter Zobel

Tau Xi  
 Tau Lambda

## HELMET & SWORDS

Eugene Allyn	Nu
Dr. Donald J. Behr	Gamma
William Berley	Delta
George Coleman	Tau Gamma
Samuel Dobkin	Tau Gamma
Howard L. Eisenstein	Tau Beta
Norman Fertig	Gamma
Daniel M. Fink	Tau Beta
Lowell R. Glazer	Tau Beta
Alan Goldsmith	Phi Beta
Joseph C. Hari	Tau Psi
Steven A. Hockfield	Omega
David N. Hoffer	Epsilon Rho
Louis S. Jacobs	Rho Delta Rho
Alexander Jaret	Rho Gamma
Shelby H. Kanarish	Psi
Edwin Michaels	Psi
Leo K. Mintz	Tau Delta
Dr. Ross B. Pollack	Mu
Bernard B. Riman	Rho Delta Rho
Roger Singer	Zeta Lambda Phi
John I. Smeyne	Tau Beta

## FOUNDERS CLUB

Marshal J. Persky Mu

## CONSULS CLUB

E. J. Evans	Omega
Harris Jacobs	Nu
Louis L. Manes	Tau Delta
Albert J. Schiff	Omega
Alfred C. Versacci	Epsilon MU

## HEARTS & LINKS

Leslie Blum	Psi
L. J. Brenner	Tau Eta
Arthur M. Kahn	Tau Alpha
Nathan Kates	Tau Gamma
Earle Leeder	Theta
Harold Leviton	Tau Xi
Richard J. Levy	Psi
Joseph Lipshie	Sigma
Irving L. Missner	Psi
Sidney Portnof	Epsilon
Marcus Ruben	Tau Delta
R. S. Schiffman	Epsilon Xi
Walter B. Stacevich, Jr.	Epsilon Pi
Saul Tanzman	Tau Gamma
J. Samuel Tenenbaum	Tau Delta

*On behalf of our  
 over 1500 active  
 undergraduate  
 members  
 thank you!  
 af*

TO PARENTS: Your son's magazine is sent to his home address while he is in college. We hope that you enjoy seeing it. But if he is not in college and is not living at home, please send his new permanent address to:

**Tau Epsilon Phi Fraternity**  
 3272 Peachtree Rd., N.E., Suite 344  
 Atlanta, GA 30305

Postmaster: Please send form  
 3579 to the above address.

### CHANGE OF ADDRESS FORM

NAME \_\_\_\_\_  
 STREET \_\_\_\_\_  
 STATE \_\_\_\_\_ ZIP \_\_\_\_\_  
 CHAPTER \_\_\_\_\_

PLEASE INCLUDE MAILING LABEL