

SPRING NEWS 1962

*The*

# PLUME

OF TAU EPSILON PHI





# The Creed of Tau Epsilon Phi

**T**O LIVE in the light of friendship—to judge our fellows not by their rank nor wealth but by their worth as men—to hold eternally before us the memory of those whom we have loved and lost—to hold forth in the solidarity of our brotherhood the nobility of action which will make for the preservation of our highest and worthiest aim—and thus be true to the ideal of friendship—

**T**O WALK in the path of chivalry—to be honorable to all men and defend that honor—to fulfill our given pledge at all times—to be true to the precepts of knighthood and win the love and care of the women of our dreams—and thus be true to the ideal of chivalry—

**T**O SERVE for the love of service—to give unselfishly that which we may have to offer—to do voluntarily that which must be done—to revere God and to strive in His worship at all times—and thus be true to the ideal of service—

**T**O PRACTICE each day friendship—chivalry—service—thus keeping true to these—the three ideals—of the founders of our fraternity—this is the Creed of Tau Epsilon Phi.

## Active Chapter Roll

Alpha Chapter  
Gamma Chapter  
Delta Chapter  
Eta Chapter  
Theta Chapter  
Kappa Chapter  
Mu Chapter  
Nu Chapter  
Xi Chapter  
Omicron Chapter  
Rho Chapter  
Sigma Chapter  
Chi Chapter  
Psi Chapter  
Omega Chapter  
Tau Alpha Chapter  
Tau Beta Chapter  
Tau Gamma Chapter  
Tau Delta Chapter  
Tau Zeta Chapter  
Tau Theta Chapter  
Tau Iota Chapter  
Tau Lambda Chapter  
Tau Mu Chapter  
Tau Xi Chapter  
Tau Pi Chapter  
Tau Rho Chapter  
Tau Psi Chapter  
Rho Delta Rho Chapter  
Tau Omega Chapter  
Epsilon Gamma Chapter  
Epsilon Delta Chapter  
Zeta Lambda Phi Chapter  
Delta Upsilon Chapter  
Epsilon Deuteron Chapter  
Epsilon Eta Chapter  
Epsilon Iota Chapter  
Epsilon Lambda Chapter  
Epsilon Rho Chapter  
Epsilon Theta Chapter  
Phi Lambda Chapter  
Epsilon Mu Chapter  
Epsilon Nu Chapter  
Phi Gamma  
Alpha Omega  
Epsilon Kappa  
Phi Eta  
Alpha Beta  
Sigma Phi  
Epsilon Pi  
Epsilon Xi  
Kappa Zeta Phi  
Epsilon Tau  
COLONIES:  
Alpha Kappa  
Epsilon Phi

COLUMBIA UNIVERSITY  
NEW YORK UNIVERSITY  
CORNELL UNIVERSITY  
TUFTS UNIVERSITY  
BOSTON UNIVERSITY  
UNIVERSITY OF VERMONT  
EMORY UNIVERSITY  
UNIVERSITY OF GEORGIA  
MASSACHUSETTS INSTITUTE OF TECHNOLOGY  
MCGILL UNIVERSITY  
UNIVERSITY OF PENNSYLVANIA  
SYRACUSE UNIVERSITY  
UNIVERSITY OF MICHIGAN  
UNIVERSITY OF ILLINOIS  
UNIVERSITY OF NORTH CAROLINA  
UNIVERSITY OF FLORIDA  
UNIVERSITY OF MARYLAND  
UNIVERSITY OF SOUTHERN CALIFORNIA  
OHIO STATE UNIVERSITY  
UNIVERSITY OF MAINE  
GEORGE WASHINGTON UNIVERSITY  
DALHOUSIE UNIVERSITY  
PURDUE UNIVERSITY  
UNIVERSITY OF CONNECTICUT  
UNIVERSITY OF MIAMI (Fla.)  
UNIVERSITY OF MASSACHUSETTS  
FLORIDA SOUTHERN COLLEGE  
NEWARK COLLEGE OF ENGINEERING  
ILLINOIS INSTITUTE OF TECHNOLOGY  
UNIVERSITY OF RHODE ISLAND  
NEW YORK UNIVERSITY, HEIGHTS  
DARTMOUTH COLLEGE  
TEMPLE UNIVERSITY  
DUKE UNIVERSITY  
FLORIDA STATE UNIVERSITY  
DREXEL INSTITUTE OF TECHNOLOGY  
RENSSELAER POLYTECHNIC INSTITUTE  
COLLEGE OF CITY OF NEW YORK  
BROOKLYN COLLEGE  
QUEENS COLLEGE  
LONG ISLAND UNIVERSITY  
HUNTER COLLEGE  
ROCHESTER INSTITUTE OF TECHNOLOGY  
WAYNE STATE U.  
BARUCH COL. C.C.N.Y.  
TULANE UNIVERSITY  
JOHNS HOPKINS UNIVERSITY  
AMERICAN UNIVERSITY  
C. W. POST COLLEGE  
MARIETTA COLLEGE  
CLARK UNIVERSITY  
NORTHEASTERN UNIVERSITY  
BRADLEY UNIVERSITY  
ADELPHI COLLEGE  
PENNSYLVANIA STATE UNIVERSITY

627 W. 115 St. New York 25  
NYU, Washington Square, N. Y.  
306 Highland Road, Ithaca, N. Y.  
9 Teele Ave., Somerville 44, Mass., c/o Tufts Univ.  
207 Bay State Road, Boston, Mass.  
389 College St., Burlington, Vt.  
P.O. Box 666, Emory U., Atlanta, Ga.  
150 Baxter St., Athens, Ga.  
353 Commonwealth Ave., Boston, Mass.  
3641 Oxenden Ave., Montreal, P.Q., Can.  
3634 Chestnut St., Philadelphia, Pa.  
320 Euclid Ave., Syracuse, N. Y.  
915 Oakland Ave., Ann Arbor, Mich.  
105 East Armory, Champaign, Ill.  
216 E. Rosemary St., Chapel Hill, N. C.  
P.O. Box 3528, University Station, Gainesville, Fla.  
4607 Knox Rd., College Park, Md.  
745 W. 28th St., Los Angeles, Cal.  
1948 Indianola Ave., Columbus 1, Ohio  
380 College Ave., U. of Maine, Orono, Maine  
2006 G. St. N.W., Washington, D.C.  
284 South St., Halifax, N. S.  
136 Littleton St., West Lafayette, Indiana  
University of Connecticut, Storrs, Conn.  
1541 Brescia Ave., Coral Gables, Fla.  
418 N. Pleasant St., Amherst, Mass.  
127 Lake Hollingsworth, Lakeland, Florida  
142 Warren St., Newark, N. J.  
3330 S. Michigan Ave., Chicago 16, Ill.  
22 Campus Ave., University of Rhode Island, Kingston, R. I.  
2229 Andrews Ave., Bronx, N. Y.  
15 Webster Ave., Hanover, N. H.  
2002 N. Broad St., Philadelphia, Pa.  
Box 4741, Duke Station, Durham, N. C.  
Box 3071, F.S.U., Tallahassee, Fla.  
208 N. 35th St., Philadelphia, Penna.  
57 Second St., Troy, N. Y.  
c/o CCNY, New York, N. Y.  
900 E. 21 St., Brooklyn, N. Y.  
41-20 162nd St., Flushing, L. I., N. Y.  
350 Livingston St., Brooklyn, N. Y.  
c/o Hunter College, Bronx, N. Y.  
65 Plymouth Ave., South, Rochester, N. Y.  
5050 Cass Ave., Wayne State U., Detroit 2, Mich.  
25 W. 23 St., N. Y. C.  
7113 Freret St., New Orleans, La.  
3124 Guilford Ave., Baltimore, Md.  
Box 651, American University, Washington, D. C.  
P.O. Box 247, C. W. Post, Greenvale, N. Y.  
106 N. 7 St., Marietta, Ohio  
Box 821, Worcester, Mass.  
Northeastern U., Boston, Mass.  
1531 W. Fredonia, Peoria, Ill.

c/o Adelphi College, Garden City, N. Y.  
c/o Epsilon Phi Colony, Penn State, State College, Pa.



# THE PLUME OF TAU EPSILON PHI

VOLUME XLIV

SPRING NEWS 1962

NUMBER 4

## THE PLUME

Is the official publication of Tau Epsilon Phi Fraternity.

Stuart Smith, Editor

Ronald Drogin, Acting Editor

Sidney S. Suntag, Managing Editor

Jack A. King, Publications Chairman

Address all communications to THE PLUME of Tau Epsilon Phi, Editorial Office, 130 W. 42nd St., New York 36, N. Y.

Published quarterly until further notice by Tau Epsilon Phi Fraternity, Inc., at Leland Publishers, Inc., The Fraternity Press, 2642 University Ave., St. Paul 14, Minn., official fraternity publisher. Editorial Offices, 130 W. 42nd St., New York 36, N. Y. Mailed regularly to National Chapter members, dues \$5.00 per year, which includes membership of \$2.00 and subscription of \$3.00. Second class postage paid at St. Paul, Minnesota.

## ON THE COVER

Twas a happy day for a group of thirty Penn State undergrads, mostly freshmen and sophomores, at a banquet held early in June. They had just learned officially that they could become Tau Epsilon Phi's newest colony, Epsilon Phi, the fifty-fifth fraternity at Penn State.

Here, Murray Rosen (right), first Chancellor of Epsilon Phi, receives congratulations from Penn State's Assistant Dean Wilmer Wise. Advisor to fraternities, Martin Leshner, is ready to offer his congratulations after having much to do with the group's early success. (Story on page 3.)

Spring, 1962

## CARILLON CHOSEN CONVENTION SITE

From August 25th through 28th of 1963, the luxurious Carillon Hotel in Miami Beach, Florida, will entertain several hundred TEPmen and women during the forthcoming national fraternity convention. The Carillon, oceanfront at 68th Street, plans to provide all social and recreational facilities of the hotel at the disposal of the fraternity. Costs for the four-day convention will be lower than the most recent national gatherings.

Centrally located in Miami Beach, the Carillon rates an outstanding reputation. Included within the convention program will be two banquets and a formal dinner-dance, a Polynesian Luau to the music of an oriental ensemble, several daylight excursion trips, moonlight swimming, and the continuous music and star entertainment as found in the Tamboourine Lounge. A presentation of the then current Lou Walters' production in the hotel's Cafe Le Can Can, a most highly rated nightclub in the area, will also be included.

Plans are underway to acquire golfing usage for the conventioners at the famed Doral Country Club with a waiver of green fees. Special convention rates have also been set for those who will wish to remain over the Labor Day Weekend (costs will be published in the next edition of the PLUME.)

As usual, the convention will be open to all TEPmen, graduate or

undergraduate, and their guests. Awards for the coming school year will be presented to the chapters, alumni, and individual undergraduates for their outstanding service, while meetings of the Grand Chapter will also be held.

## TAKE NOTICE

Ed. Note: Through the recommendation of several brothers, the PLUME will next year award the TEP undergraduate brother achieving the highest excellence in athletics (varsity and/or intramural) with a story and picture. Coinciding with the new annual TEP athlete-of-the-year, will be a story and picture dedicated to a national Sweetheart and court. It is hoped that when chapters apply for national and individual awards, they will also submit pictures and information about the outstanding athlete within the chapter, and their chapter sweetheart. The summer edition of the magazine will contain the winners.

The Editors would like alumni to supply the magazine with information about themselves, and notices concerning engagements, marriages, and births. Any news concerning individual undergraduate recognition would also be appreciated.



# ILLINOIS & NO. CAROLINA RECEIVE TOP HONORS

Two of Tau Epsilon Phi's oldest chapters, Psi of Illinois and Omega of North Carolina, proved to be the fraternity's best this past year and won the Irving Golembe Chapter of Merit Trophy. In unprecedented action, the Awards Committee selected two chapters rather than the usual one realizing the similar capabilities of the winning chapters. During the past year, both chapters did well in rushing, scholarship, finances, campus activities and relations, and maintained suitable contact with other chapters and with the national office. It is the first time that either of these chapters has won the award in several years as Nu of Georgia either won or finished runner-up during the past five years.

## VOTE BIENNIAL ALUM AWARDS

The committee decided not to give any alumni awards since, without a convention being held this year, there is no suitable occasion when such awards could be presented. The committee voted to henceforth give alumni awards only during convention years. Another action taken by the committee named certain chapters to awards for which they did not apply. Basis for these selections came from reports taken by national officials, communications received from the school and chapters, and alumni reports. In the future, the committee stated only chapters that apply for awards will be selected.

Another excellent chapter of the fraternity, Zeta Lambda Phi of Temple, gained recognition by winning the Samuel J. Lefrak Campus Achievement Trophy by showing outstanding achievement in extra-curricular and intra-mural activities. Zeta Lamb is represented by four brothers on the student council, a class president, president of several honorary societies, won first prize for Homecoming Decorations, finished second by one point for the All Sports Trophy and includes several varsity athletes. Tau Beta of Maryland and Gamma,

NYU, placed runnersup.

Although a small chapter numbering under 40 brothers, Tau Iota, Dalhousie, proved the most efficient by winning the Charles Driesden Chapter Efficiency Trophy. Chancelled by Marvin Brook, Tau Iota experienced one of its top years highlighted by an excellent ad book, three pledge classes, and amazing cooperation with the alumni, national, the community, and other fraternities at the school. Epsilon Eta, Drexel, and Alpha Beta, American, placed second.

## WEAK SHOW IMPROVEMENT

Tau Psi, Newark College of Engineering, proved victorious in consideration as TEP's most improved chapter by winning the Louis Leblenthal Trophy. Over the past four years, Tau Psi shows consistent growth, internal development, and is fast becoming one of the better chapters within the fraternity. Two chapters which many feared losing last September fared well in rushing and other matters and finished runnersup: Epsilon Kappa, Tulane, and Tau Mu of Connecticut. Both runnerup chapters pledged over twenty during the past year.

Without any doubt, the committee selected Phi Eta, Johns Hopkins, as a repeat winner of the John Kleinberger Scholarship Trophy. Four of Phi Eta's eight graduating seniors are Phi Beta Kappas, and the chapter itself averaged 3.2 out of 4 (last year 3.1). Tau Zeta's (Maine) consistent scholastic improvement over the past three years and Alpha Beta's (American) good showing over the past year earned these groups runnerup awards.

Omicron (McGill) became the second Canadian chapter to win an award this year by receiving the Louis Fein Grand Chaplain Award signifying devoted charitable and communal service to campus and community. Epsilon Lambda (CCNY), last year's winner, finished second.

The Charles Tobias Plume Trophy was awarded to Rho Delta Rho (Illinois Tech) ending domination of this award by Nu of Georgia and Bro. Alan Gardner, now graduated. This trophy signifies excellence of stories and pictures submitted to the PLUME. Kappa Zeta Phi, a new chapter at Northeastern, won its first national award placing second.

Tau Lambda of Purdue, mainly thanks to Chancellor David Neuberger who is also the school newspaper's editor, won the New Jersey Chapter Publications Award. Epsilon Lambda of CCNY was runnerup.

Members of the committee included Brothers Sid Ross, Jack Berkowitz, Larry Gottlieb, Executive Secretary Sid Suntag, and Field Secretary Ron Drogin.

## *Eight Undergraduates Awarded Medals*

### SCHOLARSHIP MEDALS

for outstanding scholastic attainment in undergraduate work to

Phil Katz, Rho Delta Rho Chapter at Illinois Institute of Technology.

Howard Ruskin, Tau Alpha Chapter at University of Florida.

Ervin Schoenblum, Tau Psi Chapter at Newark College of Engineering.

Al Harris, Zeta Lambda Phi Chapter at Temple University.

### EXTRA-CURRICULAR ACTIVITIES MEDALS

for outstanding achievement in activities outside of the classroom to

David Neuberger, Tau Lambda Chapter at Purdue University.

Steve Rosenberg, Tau Omega Chapter at Rhode Island University.

Ronald Bratspis, Zeta Lambda Phi Chapter at Temple University.

Donald Hollander, Epsilon Eta Chapter at Drexel Institute of Technology.





The Epsilon Phi Colony at Pennsylvania State U.

## EPSILON PHI BECOMES NEWEST TEP COLONY

A little over two months ago, two letters from students at Pennsylvania State University arrived in the national offices. Both letters requested TEP assistance in starting a colony at Penn State. Executive Secretary Sidney Suntag viewed the letters with hesitance; after all, several previous attempts at organizing a TEP group at Penn State had failed.

Previously committed to attending a fraternity executives meeting at State, Brother Suntag decided to meet the authors of the letters and their cohorts while at State College. His first meeting showed little as only a handful of students attended, but the next night things really began rolling. Nearly 20 came to the meeting, and although Penn State already has 54 well-established fraternities, Brother Suntag sensed the beginnings of another highly qualified chapter.

Blessed with the approval of the Dean's office and student body, the group under the guidance of Assistant Dean of Men Martin Leshner and Brother Suntag, soon swelled to thirty. Meeting weekly, the boys elected Murray Rosen, a freshman from Pittsburgh as

their first Chancellor. Two brothers from other chapters, Arnold Hecht (Mu) and Bernard Dudock (Epsilon Lambda) became active with Brother Dudock acting as advisor.

During the visit of Field Secretary Ron Drogin, the colony termed Epsilon Phi found a house excellently located being just across the street from the campus. Although the house will be able to sleep only 15, the colony view it happily as the home of their first year of activity, and hope that they will be visited by many brothers from other chapters.

Rushing chairman Lloyd Mallin optimistically views the future, although he and the group realize the outside competition should be keen. But when official recognition of the colony came from the school early in June (the Grand Council okayed the colony during its spring meeting), the group realized its first major goal. A second major event occurred immediately preceding the end of school, Epsilon Phi's first spring banquet attended and enjoyed by the members, Dean Wilmer Wise, and Leshner. By next year's banquet, it is hoped chapter status will be obtained.

## GOLDMAN NAMED TO FLORIDA SUPREME COURT

An Associate Justice of the Supreme Court of Florida, brother Phillip Goldman currently rates highly among the nation's jurists. Since becoming a member of the Florida Bar in 1948, brother Goldman has achieved the position of Associate Judge, District Court of Appeal in his state's Third District.

In December of 1960, he was appointed to the Circuit Court Bench by Florida Governor LeRoy Collins. He has served continuously since that date, and has disposed of approximately 1000 cases through January of this year.

A former Chancellor of Tau Alpha Chapter at the University of Florida, brother Goldman participates within several professional and civic organizations. He was a charter member of the Key Biscayne Kiwanis Club, and later became president of the Key Biscayne Civic Association. He is a member of the Parent Teachers Association of South Miami Elementary schools, the Harvard Law School Association, and the University of Florida Alumni Association.



Judge Phillip Goldman



# ALUMNI HOLD GATHERINGS

For two of Tau Epsilon Phi's oldest chapters, 1962 has become an alumni reunion year. Columbia's Alpha chapter celebrated its 51st Anniversary with a cocktail party, dinner and meeting, while Tau Xi Chapter of Miami held its twenty-fifth year reunion in a week long gathering in Miami during April.

Over 50 brothers attended Alpha's anniversary party held at the fraternity house and at Ferris Booth Hall in New York. Entertained by brothers Saul Turteltaub and Len Korobkin, the alumni association elected a board of directors to assist the undergraduate chapter. Dr. Israel Schwartz, one of the founders of the fraternity, became Honorary Chairman, while Milt Mound was elected Chairman of the Board. Other officers will be Julie Katzen, president; Stan Rubinfeld, ex-

ecutive vice-president; Stan Schachter, executive secretary; Fred Ronai, secretary; Norm Cohen, treasurer; and George Behrens, Charles Tobias, Max Lovell, Dick Kuh, Josh Greenberg, Mark Luftig, Jerry Engelberg, Sam Strober, and Sy Moskowitz directors.

Recently, title to the chapter house located at 115th Street passed to the Alpha Alumni Association, Inc., a corporation comprised of all members of the chapter. The dues were set at \$5.00 per year which includes national dues, while Brother Fred Ronai is handling announcements and correspondence.

For Tau Xi Chapter, the week of April 2-7 became anniversary week with as many as 100 brothers participating. Staying at Miami Beach's Beau Rivage hotel, the group enjoyed a formal dinner, sight seeing

tours, an evening dedicated to the first pledge class, cocktail parties, and a luncheon at the University with the undergraduates.

Ideas for the affair began when a group of the original founders met with Brothers Stanley Blackman and Henry Warshavsky making definite plans. With the aid of local Miami alumni under the directions of Irving "Doc" Lebow, the anniversary became reality.

Highlighting the week's activities was a formal dinner held at the Beau Rivage. Brother Warshavsky had the honor of pledge pinning his son Robert, the first son of a founder to be pledged in the chapter. Several alumni from Tau Alpha chapter, Florida, attended. Brothers Jack Mintzer and Hy Kock received plaques for their help in building Tau Xi's new chapter house.



Above: Members of Tau Xi Chapter recently held a 25th year reunion in Miami Beach. Seated at the front table were: front row (l to r) Hy Kock, Rabbi Marius Ranson, Hank Warshavsky, Irv Lebow, Dr. Stan Blackman, and Jack Mintzer; back row, Leonard Tobin, Arthur Kahn, Marty Spatz, Bob Warshavsky, Ronald Lebow, Burton Kahn, and Maynard Abrams.



Below: Stan Schachter addressing Alpha Chapter's alumni at their 51st anniversary banquet. At the dais, l to r, are Alumni Officers Jerry Engleberg, Julie Katzen, Stan Rubinfeld, Milt Mound, Schachter, Sid Sontag, and Norm Cohen.





"Give me an M," hollers University of Maine Mayor Cedric "Rick" Minkin of Tau Zeta Chapter. Bro. Minkin received high praise for his efforts in raising the spirit of the student body this past year.

## Brothers Excel In Varsity Sports

**BRO. ROBERT VOGEL**, Tau Delta (Ohio State). Starting tackle past two seasons on nation's top team; all-American candidate for coming year. Vice-chancellor of chapter, above average student.

**BRO. GERRY GREENSPAN**, Tau Beta (Maryland). Starred for varsity basketball team as sophomore. Active in chapter activities, and aids chapter's sensational intramural basketball team which won all Washington, D. C., tournaments.

**BRO. RODNEY MANDLESTAM**, Tau Xi (Miami). Number one man on Miami's famed varsity tennis team as a soph. He was 1959 Wimbledon Junior champ, and doubles with Bro. John Hammil as top doubles team for varsity. He is the chapter's co-chairman for social and athletic events. Bro. Mandlestam also started at halfback for the varsity soccer team, and was named to first team Florida intercollegiate All Stars.

**BRO. HARVEY HARRISON**, Tau Theta (George Washington). A sophomore varsity tennis player with a fine record of tennis success while in high school in the New England area. He is presently playing third man for the GW Tennis varsity.

**BRO. ERVIN SCHOENBLUM**, Tau Psi (Newark). Winner of national Extra-curricular activities key, he captained varsity tennis team past two years, won the school's badminton championship the past three years, and starred in intramural volleyball and basketball.

Spring, 1962

# Teps Maintain Interest In Campus Activities

Several undergraduate brothers of the fraternity gained prestige and success for themselves and their chapters during this past school year. Many brothers excelled in athletics, student government, school organizations, and academics. Almost every chapter can claim at least a few members who are well known on campus for their extra-curricular activities. Needless to say, the fraternity applauds these members, and hopes future years bring far more TEPmen to the forefront in extra-curricular activities.

Some TEP undergraduates who have made good in 1961-62

**BRO. STEPHEN B. ROSENBERG**, Tau Omega 198 (Rhode Island), a junior, elected president of the school's Student Senate. An active member of the chapter, he served the fraternity as rush chairman, historian, and parliamentarian. Besides maintaining above average grades, Brother Rosenberg was president of the URI Committee Upholding Racial Equality, (CURE) a reporter on the student newspaper, and assistant advertising manager of the yearbook. Bro. Rosenberg was nominated by Tau Omega for the national Extra-Curricular activities award, and received it.

**BRO. ELLIOTT ROBERT BARKAN**, Epsilon Theta 70 (Queens), was awarded a Woodrow Wilson Fellowship for graduate study next year. The Fellowship award covers a full year's tuition and fees at a graduate school of his choice and a living allowance of \$1500. Last year, Bro. Barkan won the National Scholarship Key.

**BR. ERIC DOBKIN**, Epsilon Pi (Marietta), was elected president of Pi Kappa Delta, national forensics honorary, while Bro. Robert Dryfoos became vice president. Both brothers are officers of their chapter, a group which includes many brethren active in school affairs.

**BRO. DON HOLLANDER**, Epsilon Eta (Drexel), presently holds two major positions simultaneously. Recently elected Chancellor of the

chapter for the coming school year, he is also president of the Drexel student body, and a member of the senior honorary society. He won an Extra-curricular Activities key.

**BRO. RONALD BRATSPIS**, Zeta Lambda Phi (Temple), received a national Extra-curricular activities key for many reasons. Bro. Bratspis edited the Temple University News, the fraternity handbook, and the Interfraternity Newspaper. He was a delegate to the National Student Association, and the winner of the Interfraternity Award as the outstanding Greek at Temple. He served the chapter as historian, parliamentarian, and publicity chairman.

**BRO. DAVID NEUBERGER**, Tau Lambda (Purdue) amazes fellow brothers by the amount of work he produces. Not only is Brother Neuberger chancellor of the chapter for the second successive season, but he also is the editor of the school newspaper. He is active on IFC as a member of the judicial board, and rush committee. Bro. Neuberger, who averages 4.71 out of a maximum 6, is a member of the school's top honorary societies including Gimlet, Skull and Crescent.



Stephen Rosenberg, Tau Omega





At the annual New England TEP alumni banquet, Brother Joseph Ford (r) received the area's TEPman-of-the-Year award from last year's recipient Bro. Clarence Berger (l). Brother Ford is prominent in industry. Also seen is Brother Richard Barkin, President of the New England Alumni Association.

## New England Alumni Award Given To Ford

The New England TEP alumni recently held their annual banquet and gave several awards to outstanding alumni and undergraduates in the area. Held during April at the MIT Faculty Dinner Club, nearly a hundred alumni attended the awards dinner.

Honorary Brother Joseph Ford received the New England TEPman-of-the-Year award. Brother Ford, a prominent industrialist and philanthropist, was presented a plaque in recognition of his contributions to the New England college community. He is a trustee of Brandeis and Northeastern Universities, and finds time to devote his energies to remaining colleges in the Boston area. Last year, Bro. Clarence Berger, Tau Zeta, (Me.), received the award. Bro. Berger, who is the Executive Dean and assistant to the President at Brandeis, presented the award to Bro. Ford.

The undergraduate New England TEPman-of-the-Year award was won by Brother Al Weinberg of Epsilon Delta at Dartmouth College. He has been very active in undergraduate activities while attending school.

Several alumni received awards for outstanding service to their respective chapters or colleges. **Dr. Samuel Lopatin**, Gamma, gained an award through his untiring efforts aiding Epsilon Xi chapter at Clark during their first year of activity. **Brother Robert Gordon**, Tau Pi, received an award for his work as President of his alma mater's alumni association (Univ. Massachusetts), while **Brother Nat Lash's** assistance to Kappa chapter at Vermont won him an award.

Brother Richard Barkin, Assistant Tribune of the national fraternity, presided over the affairs as President of the New England Alumni Association.

*Did you ever sit down and  
take stock of yourself  
And see how lucky you are?  
Just think how you could be  
of HELP  
To less fortunate Brothers, both  
near and far.  
The Lord has blessed many of  
us with worldly goods  
Much more than we normally  
have use for,  
So wouldn't it be wonderful to  
get into the mood  
To share with those that need  
more.  
Many more Brothers could be  
materially helped  
If we would but dig down deep  
To make the road to their goals  
amply assured  
And look at the pleasures we'd  
reap.*

Please help by sending your check NOW to the Tau Epsilon Phi Scholarship and Student Aid Fund, 130 West 42nd Street, New York 36, N.Y. (tax deductible). President of the Fund is Dr. A. I. Cohen, 491 Commonwealth Avenue in Boston, Massachusetts. Bro. Jack A. King of Philadelphia is vice president, and Bro. Samuel W. Strauss of Camden, New Jersey, is secretary-treasurer.

## Scholarship Named For Brother Lowe By Sigma Delta Chi

The establishment of a \$500 journalism scholarship in memory of the late Washington newsman, Bro. Herman A. Lowe, was announced in May by Sigma Delta Chi Journalism fraternity. Bro. Lowe, a member of Rho Chapter at Pennsylvania, became a distinguished journalist and worked for the Washington bureau of the *Philadelphia Inquirer*, and contributed frequent articles to national magazines. He also was a guest lecturer in several journalism classes. Bro. Lowe served three years as Director of Development and Public Relations of the Albert Einstein Medical Center in Philadelphia.

The Herman A. Lowe Memorial Scholarship in Journalism was established to help worthy students who need financial assistance to continue their full-time schooling in pursuit of a journalistic career. The first of these annual scholarships will be awarded for the coming school year to a student who is presently a sophomore or junior at American, Catholic, Georgetown, George Washington, Howard or the University of Maryland.



# Alumni News

**LAWRENCE BERNARD**, Sigma (Syracuse), was recently promoted to Senior Editor of *Advertising Age*, New York, in charge of international news. Brother Bernard joined the weekly publication as a reporter shortly after graduation in 1950, and subsequently was named an associate editor. In his new appointment, Brother Bernard continues with his domestic news activities, but in addition, is now in charge of world-wide advertising news coverage as well.

**JERRY LINKIN**, Theta (Boston Un.), was recently elected to the Vice-Presidency of the California-Israel Chamber of Commerce after serving two years as a member of the Board of Directors and public relations chairman of the organization. The Chamber functions to develop tourism, commerce and industry between the U.S. west coast and Israel. Bro. Linkin is presently West Coast Sales Manager of EL Al Airlines.

**LOUIS A. KASS**, Delta (Cornell), a lawyer, is lecturing at many of the outstanding colleges on topics concerning his field. Recently, Bro. Kass returned to Cornell to lecture on the difference between law school finals and the bar examinations. He has been lecturing on New York pleading and practice.

**MARVIN EDELMAN, SYDNEY JAFFE**, Tau Mu (Connecticut), own and direct a sports camp in Connecticut featuring several leading professional athletes. The camp, open to teenagers, includes three separate athletic clinics. Bro. Edelman has been a camp director now for 18 years, while Bro. Jaffe is a radio-tv sportscaster and public relations counsel.

**JACK M. KURTZ**, Omega (North Carolina) presently heads a plywood and lumber company in Charleston, South Carolina. He built a \$3 million a year business out of a \$1250 investment in the short space of six years. Efforts by Bro. Kurtz and his employees have resulted in a number of honors, including the company's selection in May of 1960 as a certified Home Improvement Center by *American Home* magazine.

**DR. NORMAN ROSENBLATT**, Kappa Zeta Phi (Northeastern) an assistant professor of history at his alma mater, and advisor to the fra-



Dr. Norman Rosenblatt

ternity chapter, has been awarded a Fulbright Scholarship by the State Dept. Recently named TEP "Man of the Year," by the chapter, Dr. Rosenblatt will leave this summer for Spain, where he will be a research scholar at the University of Madrid, during the 1962-63 academic year, devoting his study to Spanish Intelligence in the Levant under Phillip II. He is a member of the American Historical Association, and the Medieval Academy and the Conference on British Studies.

**SAMUEL J. LEFRAK**, Tau Beta (Maryland), recently wrote an article in the April '62 issue of "Overview," a periodical directed to educational executives. Bro. Lefrak, a leading apartment builder, offered blunt advice in his article aimed at these executives, and recommends that city and town governments must revise their codes governing today's conditions in mass housing and mass education.

**DR. S. BENEDICT LEVIN**, Alpha (Columbia) is deputy director of the Institute for Exploratory Research, U. S. Army Signal Research and Development Laboratory, and has been given a Public Law 313 position, a Civil Service distinction reserved for outstanding scientists and professional men. Bro. Levin is recognized as an expert in electronic use of minerals and synthetic mineralogical materials.

# Teps In Service

Bro. Harvey A. Birnholz, Tau Xi 412 (Miami) is presently the assistant to the Chaplain at Fort Benning, Georgia. . . . Bro. Leonard Hess, Xi 47 (MIT), is serving as a lieutenant in the army. . . . Bro. Julius Bender, Epsilon Gamma 161 (NYU, Heights), a Second Lt., recently completed the signal officer orientation course at the Army Southeastern Signal School at Fort Gordon, Ga. . . . Bro. Henry A. Blumenthal, Nu (Georgia), an Airman Second Class, has been assigned to Hunter AFB, Ga., following his graduation from the U. S. Air Force technical training course for air traffic controllers at Keesler AFB, Miss. . . . Bro. Harvey I. Weiner, Tau Alpha (Florida), Second Lt., recently finished the officer orientation course at The Transportation School, Fort Eustis, Va. . . . Bro. Lewis I. Gordon, Tau Chi (Louisville), as a Second Lieutenant was recently assigned to Sidi Slimane AB, Morocco, following his graduation from the U. S. Air Force technical training course for communications officers at Keesler AFB, Miss. . . . Bro. Donald E. Weinberg, Rho Delta Rho (Ill. Inst. Tech.), an Army Reserve Sgt., completed the air transportation course at The Transportation School at Fort Eustis, Va. He is regularly assigned to the 179th Transportation Company, an Army Reserve unit, in Chicago. . . . Bro. Manuel D. Blum, Zeta Lambda Phi (Temple), Second Lt., recently completed the officer embarkation orientation course at The Transportation School at Fort Eustis, Va. . . . Bro. Howard S. Rothberg, Psi (Illinois), an Airman Third Class, is returning to Chanute AFB, Ill., following his graduation from the U. S. Air Force course for medical service specialists at Gunter AFB, Ala. . . . Bro. Lawrence Friedman, M.D., Gamma 529 (NYU), has been appointed First Lieutenant in the U. S. Air Force and will be stationed at Lackland AFB, Texas. . . . Bro. Robert G. I. Aks, Sigma (Syracuse), Bro. Dennis S. Spokany, Phi Lambda (LIU) and Bro. Jerome M. Sisk, Epsilon Mu (Hunter) have been commissioned second lieutenants in the Air Force upon graduation from Officer Training School at Lackland AFB, Texas.



# UNDERGRADUATE CHAPTER NEWS

## Maryland, Tau Beta

*Tau Beta Chapter of Tau Epsilon Phi during the last two years established an athletic record hard to surpass. The basketball team must be rated as one of the finest fraternity teams ever assembled. During the past two seasons, Tau Beta's cagers amassed 32 consecutive victories, without a loss, winning several championships. With the five starters placing on the University of Maryland's All-Star Team, the squad won the interfraternity and university intramural championship and Metropolitan Washington Invitational Basketball Tournament.*

Height and speed feature Tau Beta's attack. Paced by Maryland's most valuable intramural basketball player, 6'8" Howard Heiss, the team includes Steve Alpert, 6'4"; Bruce Dribbon, 6'2"; Joel Sherman, 6' and a former high school Maryland All-Stater; plus playmaking guard George Hodor, 5'10", and a former high school star from Queens, New York. Other players include Clark Goldstein, Joe Forster, Roger Kaplan, Al Bernstein, Jay Brecker, and Mike Krongard.

Supported by large attendance at each game by an enthusiastic chapter, the team plays an exciting game and displays an offense of fast breaks with many various attacking patterns. Recently, Tau Beta sponsored a basketball game against the Baltimore Colts playing for charity. Tau Beta won the game 49-42, leaving the college boys with various bumps and bruises but happy over the success the event generated.

Tau Beta also finished second in intramural football competition, won the ping-pong tournament behind Brother Clark Goldstein, one of the

best players in the country. Recently, the chapter won the interfraternity volleyball championship.

Tau Beta not only excels in sports, but in recent elections throughout the campus two brothers won offices. Brother Joe Forster, former chancellor, was elected as Interfraternity Council treasurer, and Treasurer of the Senior Class. Brother Irv Gellman was elected President of the Men's League, U. of Maryland.—JOE FORSTER, LARRY BENNETT

## North Carolina, Omega

Omega chapter is packing up and getting ready to go home. The brothers are completing their finals and grades are now arriving. The chapter held its position in Carolina's scholastic rankings, as Omegamen continued to make outstanding grades. As the members leave, they know they've done a good job.

Leaving, everyone has looked forward to it for some weeks now. North Carolina experienced beautiful weather and Omegamen were in the midst of the fun-loving, carefree crowd going to the Beach each weekend. And now, back to the home beaches—

Then, of course, eight of Omega's outstanding brothers won't be enrolling in UNC next



A pretty Miss, Dale Welsch of New Orleans, as the Sweetheart of Epsilon Kappa at Tulane earned the admiration of the brothers for aiding the chapter during the past year.

year. The army, medical school, law school, graduate business school, and marriage await them. In line with their accomplishments, a grateful Omega feted the eight at a banquet. They contributed a very great deal to Omega's bright tradition, but their sojourn is over. Moving on are Dick Savitt, Aaron Levy, Paul Planer, Ed Manning, Barry Adler, Sheldon Fogel, Martin Van Dyne, and Barry Portnoy.

Fifteen new brothers have been initiated. They know they have a rich heritage to uphold, and the chapter has full confidence that these initiates will soon fulfill the responsibilities and duties inherent in being a brother, and fully participate in Omega.

Forty-seven brothers are going home, but in September, they will return to the chapter with plans for success, personal and chaptorial. Already the rush machinery is being oiled to perfection for the fall. Rushes can expect a comprehensive rush, as Omega plans to again attract the high quality boys for which it is known. A party schedule, which, if it is only half as good as this past year's, should make the god Bacchus delight, has already been arranged.

But Omegamen aren't homebodies. Recent election of brothers Lou Legum as Yearbook editor-in-chief, and Martin Freedland as University Dance Committee chairman illustrate Omega's growing influence on campus.

Yes, Omegamen are going home to their families, girls, and jobs. But in September, these brothers will all come, not as lemmings with an unknowing urge, but as brothers with a desire to see each other again, work together again, and contribute to each other's success and the continuing success of Omega.

Tau Epsilon Phi-Omega Chapter, a rich heritage, and a brilliant future (Ed. Note: Omega was co-recipient of Chapter of Merit trophy this year).—KEN TOPPELL





"Old chancellors never die, they just fade away," as Jack Yellin (l), the old, administers the installation rites to his successor, Martin Ustin, of Tau Psi Chapter at Newark College of Engineering.

## N.C.E., Tau Psi

On Friday, May 11, 1962, Chancellor Jack Yellin turned the gavel of Tau Psi chapter over to Chancellor-elect Marty Ustin, ending our most successful year (one in which the fraternity's membership more than doubled), and opening the way to an even more successful one. All persons present at this induction dinner, whether active brothers or invited faculty members, could not help being aware of the fantastic changes which have and still are occurring at TEP NCE.

Early in the school year, the brothers finished the remodeling of the chapter meeting room. Within a few weeks, plans were drawn up under the able leadership of senior brother Bill Klein, for a new paneled formica bar. By the end of mid-semester break, Tau Psi had a new bar plus the added bonus of rise in fraternalism stemming from brothers working together on a common project.

Housing improvements are not Tau Psi's only projects. An extra active Community Service Committee headed by Brother Armand Berliner organized successful projects as the pledge fund raising campaign for Derbora and the second annual outing for the boys of St. Peter's Orphanage. The athletic committee increased the chapters participation in interfraternity sports to a new height, and organized baseball games between the brothers every Friday.

Spring, 1962

On the social scene, Tau Psi proved far from dormant. A list of all the parties would alone fill a page as they ran the gamut from Hay Rides to Theater Parties, and even to a boat ride up the Hudson.

The "bridge-builders" of the chapter have been considering buying the entire house for several years, and now only is their foresight becoming reality. Through a cigarette-collecting contest (in which the chapter won a Hi-Fi set), a close relationship has grown between Tau Psi and Epsilon Eta at Drexel. In the past year, the transportation of empty cigarette packs between Philadelphia and Newark jumped a thousand per cent.

It really has been a great year for Tau Psi, and it will be an even better one next year. Just ask new Pledge Warden Stu Davis, who is now working madly on strategy for the largest rushing campaign Tau Psi has ever attempted. (*Ed. Note: Tau Psi proved national's most improved chapter by winning the Louis Lebenthal trophy.*)—ALLEN KATZ

## American, Alpha Beta

Some chapters start off slow and some start off fast. Alpha Beta began meteorically. Only a chapter of TEP little more than two years, established at American University for three and one half years, Alpha Beta still exists in a room located in the school's main building. This room, 15' by 23', is house and home

to 43 brothers. Prospects for getting land on campus are non-existent, and to rent or buy a house in the immediate American U. area is like trying to get a fraternity house on 42nd Street.

During rushing, the chapter hits first, hardest and longest. By using the image with the freshman as being the friendliest guys on campus, Alpha Beta again this year, as in the previous two years, took the largest freshman pledge class on campus. Among that class happened to be the freshman class president (Alpha Beta has pledged and initiated a class president every year) and the starting guard on the basketball varsity (he is also the star of the baseball team hitting .432 near the end of the season).

The brothers are also active in campus affairs. An Alpha Beta is vice president of the junior class, editor of the school newspaper, treasurer of the IFC, homecoming chairman, elections committee chairman, both starting guards on varsity basketball team, starting first baseman and pitcher on varsity baseball squad, second man on varsity tennis team, member on swimming team, and the captain and most valuable player on the varsity soccer team.

Alpha Beta won the IFC Scholarship Cup (*Ed. Note: chapter placed runnerup for national scholarship trophy*). The chapter also won the Greek Skit night, and missed the IFC Athletic Trophy by just two points.

Brother Vic Samra is the newly elected Chancellor and succeeds Barry Pollack.



A Field Secretary, three Chancellors, and a bursar in Epsilon Iota's new living room. Seen (l-r) are Field Secretary R. Drogin, chapter's three Chancellors during past year—Harold "Spike" Seligson, Henry "Hank" Cohen, and William Rosenberg, and Bursar Les Waldman who is nephew of Sid Suntag, Executive Secretary.





Tau Thetas enjoying themselves while building their homecoming float.

## G. Washington, Tau Theta

Tau Theta chapter just completed another very successful year. When rush began in the fall, we remodeled our basement. This became the site for many fabulous parties, and doubled as the chapter dining room.

The social season proved to be a fine one under the direction of Ira Schandler, social chairman. Some of his imaginative parties included a visa versa, jungle, Roman Toga, Hobo, Pajama, and Homecoming Float party. The social highlight of the year was the Sweetheart Dance where Susan Scher became Chapter Sweetheart.

The TEPS also forged ahead on campus. Some of the activities the brothers engaged were: Chairman and two subchairmen of Homecoming, chairman of Fall Concert; President, secretary, and membership chairman of the Pre-med Honorary Society; Vice-president of Gate and Key; two members on Student Council; two brothers elected to *Who's Who in American Colleges*; President of the dormitory and officers of many other campus organizations.

Scholastically, Tau Theta ranks among the top on campus, and has the third highest

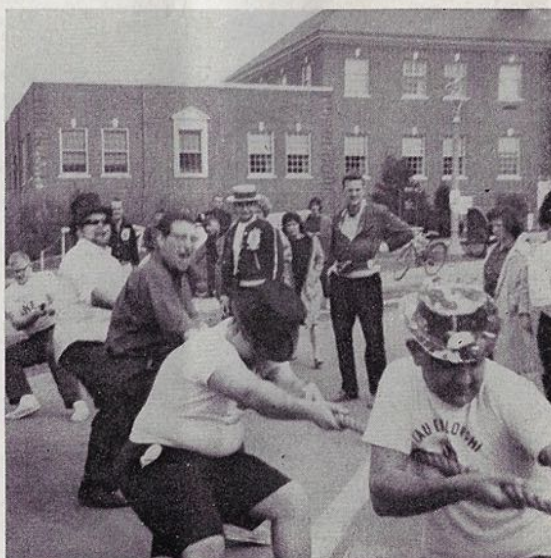
## Maine, Tau Zeta

For Tau Zeta chapter, 1961-62 proved one of the chapter's best years. Socially, Tau Zeta saw over a third of the membership become pinned, and recognized that an active social schedule helped make this possible. Scholastically, the chapter improved from a lowly 17th a few semesters ago to a highly respectable fourth (*Ed. Note: Tau Zeta finished runnerup for Kleinberger Scholarship Trophy*) with almost all of a graduating class of twelve planning to further their education in graduate school.

Speaking about the graduating seniors, they rate as the top

class to graduate from the chapter in over a decade. From their membership came a campus Mayor, Rick "Reggie Van" Minkin; a Winter Carnival chairman, Henry Binder; a tennis captain, Dave O'Donnell; a Greek Weekend chairman and capable chancellor, Mike Mandell; a Student Senate leader in Stan Schneider; and a proctor, Richard Bodette. Other Tau Zetans leaving the school are Fred Lord, Andy Blum, Art Newman, Jeff Podell, Gene Salin, and Arnie Baker.

A crowning achievement of the year resulted when Tau Zeta finished a close second in the Greek Weekend Chariot Race, the first time this



Tau Zeta's (Maine) heavies, Art Newman, Chaim Bouvier, Gene Salin, and Reggie Minkin heave in a tug of war battle during the school's Greek Weekend sporting events. The chapter finished second in these activities.

fraternity QPI. Athletically, the chapter finished in third place in intramurals, and was awarded the Sportsmanship trophy at the last intramural banquet.

The year ended with the Annual Spring Weekend and now, the chapter looks forward to a highly successful rush this fall.

New officers for the coming year are: Chancellor Larry Levine, Vice-Chancellor Ira Schandler, Scribe Eric Fine, Bursar Richard Ellman, Warden Leo Breitman, Historian Aaron Blum, Chaplain Tom Gutterman, and member-at-large Steve Haenal.—AARON BLUM

event has ever been held. Chapter brothers made the quarter-finals in the intramural tennis championships, and finished fifth in bowling. All told, the chapter completed the intramural sports season in the upper half of the 17 fraternities.

This year, TEP held several joint parties with other fraternities on campus including Teke and Sig Ep. All Tau Zeta parties were well attended by visitors from campus, and proved that once again TEPS topped Maine socially. Themes used were Toga, Pajama, Traif, and Folk, not to mention the annual Hades Hop, and Fall and Spring Houseparties where Miss Judy Joel became sweetheart.



## Columbia, Alpha

As the school year draws to a close, Alpha chapter can look back over the semester with considerable pride. The brothers became active in all facets of campus activity.

On the sports scene, TEPs captained the tennis and bowling teams and played important roles on the wrestling and swimming squads. The "politics" of the chapter triumphed by winning the presidency of the Young Republicans Club and the vice-presidencies of the Columbia Student Council and the sophomore class.

Our more musically inclined brothers, frustrated by our sometimes-tuned piano, reacted by infiltrating the College Band. With Bursar Chuck Braun as Head Manager, the Band is rapidly becoming a refuge for TEP musicians.

Alpha excellence is illustrated in the scholastic field. A list of those brothers winning Dean's list honors and Phi Beta Kappa keys is too long to be included here. Many of the top-flight graduate schools are discovering that TEPs ARE TOPS, as our acceptance from them show.

The chapter excelled collectively under the leadership of chancellors Jerry Engleberg and now Seymour Moskowitz. The annual Interfraternity Council (Pamphratia) Spring Carnival, designed to help raise money for the Columbia College Scholarship Fund, is illustrative of chapter efficiency. Five members of the Carnival committee and the chairman were TEPs. Alpha received a cup for outstanding partici-

pation in the Carnival, and a cup for best booth, making the third time in five years TEP has won.

This year, Alpha's booth was titled "Elephant Walk" consisting of a carousel standing mounted composition-board elephants. The entire rear of the booth was spanned by a mural depicting a circus scene, and covering the sides were sheets with more paintings. The entire booth, with the exception of a motor, was constructed by the brotherhood. The object of our game of chance was to hit an elephant's eye with a dart while the carousel was moving. Although the game was difficult, the student response was so great that many brothers were unable to get through the crowd to try their luck.

After the carnival, Alpha held an Open House for the entire student body. Thanks to Brother Sandy Schlesinger, who was in charge of Carnival, we were able to obtain the talents of one of the bands which performed at Carnival. Here again the response was so great that many couples were unable to display their twisting ability.

The rest of our social program was equally successful. One particular highlight was the Spring Formal. Based on a polynesian theme, the Formal provided a mixture of oriental food, ornamental leis, drinking out of pineapples, and, of course twisting.

Another memorable moment this year, not part of the planned social program, was our picketing of the British Consulate on Washington's Birthday. Parodying the many protest-marches which have become the vogue, the brothers carried signs with such slogans as "Better Dead than Red-Coat", "Washington Si,

George III No", and "Lobsterbacks Go Home". Unfortunately, the Consulate was closed in observance of the holiday! However, our antics were duly recorded for posterity by the New York *Herald Tribune*.

## I.I.T., Rho Delta Rho

The spring semester at IIT proved a busy one for the Rho Delta Rho chapter. After becoming firmly established in our new house, the chapter opened the spring social season with a terrific rush dance following a Polynesian theme. Helping to make the rush dance a success was an indoor barbecue featuring shish-kabob. A beautiful indoor fountain and pond was used for decorations.

A week later, seven men were inducted as pledges of the Rho Delta Rho chapter. As the semester progressed, TEP social activities included various mixers, a beatnik party, two after-theater parties, and a folk-song hootinany climaxing the mid-semester IFC interfraternity open house, when out-of-town prospective students stayed in fraternity houses for the weekend.

As the semester drew to a close, the social season wound up its activities with some unsurpassed events. The pledge dance, called the "Black Mark", turned out to be one of the finest events held by the chapter. A night-club setting with tables lit by candlelight, and music provided by a four-piece combo set the scene of this affair. The semi-annual event, which included the traditional satirical pledge play was thoroughly enjoyed by the brotherhood.

Jerry Engleberg (l), past Chancellor, of Alpha Chapter, gives top alumnus award to Alumni President Milt Mound. (right) Alpha's enjoying themselves at a party following their participation in the school's Spring Carnival.





# Undergraduate Chapter News Continued

## UConn, Tau Mu

Tau Mu proudly announces this past year proved TEPS ARE TOPS in all aspects. When the chapter returned to school in September only 16 brothers were present at first roll call; but with absolute necessity of reaching at least 40 men or being forced off campus, Tau Mu's entire membership grouped together for the most important rush period the chapter ever faced. Aided by national, the chapter pledged over 30 men this year, surpassing the requirements and acquiring excellent quality within the pledge class. Among the new members is Myron Krasij, a fantastic soccer player who set the school scoring record and became an All-American. He hopefully looks forward to scoring a minimum of 22 goals this coming season.

Socially, the chapter met success under the direction of Brothers Joel Kipperman and Steve Greenberg. A series of record parties coinciding with themes like the "Untouchables", "Roaring 20's", and "Peppermint Lounge" added up to big weekends. The annual events of Yale-UConn Weekend in New Haven and Founders' Weekend also proved successful.

The chapter entered intramurals winning the tennis championship and placing respectively in other events. In the biggest campus activity of the year, the Community Chest Carnival, Tau Mu placed third in the float parade and its booth did well also. The chapter participated in holding a Christmas Party for mentally retarded children from a nearby institution.

Scholastically, Tau Mu's improvement clearly showed. (*Ed. Note: Tau Mu Chapter finished runnerup as most improved chapter this year.*) Tau Mu finished sixth out of 22 fraternities on campus and well above the All Men's average.



"Man, let's get out of the city for a weekend." Several Epsilon Lambda's (CCNY) seen here recently visited Washington, D. C. acting on this urge. Wonder if they saw Jack.

## CCNY, Epsilon Lambda

In its few short years of existence, Epsilon Lambda experienced its share of ills, delights, and tragedies, but none can be compared with the joy, tragedy, and success which befell the brotherhood of TEP this past year.

Early in the year, old man fire saw fit to reach out without warning as an electrical fire from the floor below swept upward to Epsilon Lambda's quarters and caused extensive damage to the newly completed main room and the soon to be completed study room. This situation of despair was met with optimism and determination as the brotherhood formed a bond of greater unity to meet the new demands inflicted on Epsilon Lambda. Rebounding from the fire without a loss in operating efficiency, the brothers began looking for temporary meeting facilities, and finally, thanks to Alpha Omega Chapter, found quarters for the meetings which could not be held in school. In the meantime, the chapter continued operating in all other commitments.

Overwhelming success struck Epsilon Lambda twice during the year,

once socially and once politically. A special concert committee, under the leadership of Past Chancellor Harvey Mallement and aided by Brothers Al Weinstein, Richard Schweidel, and Mike Schweitzer, successfully organized promotion of one of the top social events of the season at CCNY. The affair, a folk concert featuring the renowned Weavers, was sponsored by Epsilon Lambda. With every brother working at the ticket centers and pushing private sales, every seat in the auditorium was occupied for the performance.

To this achievement was added the political success gained by Brothers Mike Schweitzer and Richard Schweidel as both gained positions on the IFC Executive Council for the new term. With greater representation than ever before in IFC, TEP should easily do its share for the fraternal community of CCNY.

Although Epsilon Lambda failed to successfully defend the IFC athletic crown they won last year, the chapter managed to remain in this year's running until the final weeks of the competition. It was a tough struggle maintaining an early season lead, and defeat became apparent as mid-year graduation losses silenced the softball bats and cut the legs from under the track team. Failure to capture the two main spring competitions proved the key to defeat.

Amid defeat, however, shone rays of future victory as Epsilon Lambda's cagers fought their way to a winning season before the bubble burst in the semi-finals of the basketball tourney. It was the first victorious season since EL's inception and brought high hopes for next year.

Among the standout performers for the chapter this season were Brothers Pete Rosenberg (swimming), Bob Schick (basketball), Jeff Goldstein (softball), Joel Kaplan (volleyball), Steve Ganzell (football), and Fred Borah (bursar). The latest pledge class boasted two outstanding athletes in Marty Dunn and Al Harrison, both of whom should greatly enhance the athletic stock of the chapter.



## Northeastern, Kappa Eta Phi

The scholastic year is closing, and Kappa Eta Phi chapter can look back on it as the most eventful and successful period of its great 38-year history.

Everything began with the completion of our goal on October 29, 1961, to become a part of the national fraternity, TEP. The installation of our chapter was held at the Boston Club attended by many notables from both TEP National and Northeastern. With the installation completed, we then proceeded to channel our energy and talents to prove that **TEPS ARE TOPS at NU.**

Our rush program, headed by Brother Dave Woolf, included numerous smokers, and various parties such as a twister and a beatnik affair. At the completion of the formal rush period, KZΦ obtained 19 excellent pledges. During their pledge program, the spirited pledgii were awarded with two outings; a Pledge Walk through Boston and a weekend camping trip. The Pledge Walk consisted of having the pledges dress in various comical attire, denoting such people as Mammy Yokum, a harem girl, Friar Tuck and numerous others, while they completed prescribed assignments throughout Bean Town. The pledge weekend at Myles Standish Reservation in Plymouth found everyone having a ball, taking advantage of the sports and activities which were available.

Our social season for the past year proved outstanding. In January, a Playboy Party was held at the Hotel Vendome to which all the local TEP chapters were invited. Our annual Marvin Guttien Scholarship Dance was held in April. At this dance, Brother Dave Woolf was awarded the Guttien Scholarship based upon both scholarship and service; and Arline Feibel was selected chapter sweetheart. Our Dinner Dance at the Chestnut Hill Country Club, in June, proved to be a great success with the first printing of an ad

book. At this dance, the Merrill Lovering Award, given to a brother of the chapter showing exemplary fraternalism, was given to Brother Peter Soltz. This summer, as in the past, Kappa Zeta Phi plans numerous beach parties, barbecues and outings.

Athletically, TEP excelled by acquiring first place in the IFC Hockey League behind goalie "Jacques" Small. In bowling, we tied for first in pinfall and points as Brother Larry Albert led the league with a candlepin average of 110. This year's softball team started strong led by superior pitching from Brothers Stan Natenson and Larry Albert. The outstanding athlete of the chapter, Brother Dan Aizley, was presented the Zeta Award at the Lovering Dinner Dance.

During the year, Kappa Zeta Phi chapter took the initiative along with Xi, Eta, in renewing the Yankee Conclave to which all TEP chapters in the New England area were invited. Agenda for the Conclave included a registration cocktail party, a regional basketball tournament at which Epsilon Xi, Clark, won, and brunch.

**At the present time, final arrangements are being made to acquire one of NU's dorms for a house. We hope to have the arrangements completed by the end of the summer, so that all will be ready for the coming school year.**

One of our Brothers, Bob Berman, has recently made a name to fame by being both the manager and lead singer in the "Interludes", a singing group well known in the New England area.

The year is closing, and with the close comes elections and the arrival of a new and energetic executive board. The officers for the coming year are Dave Woolf—Chancellor, Al Sapoznick—Vice Chancellor, Gene Bernstein—Bursar, Ernie Gam—Historian, Dan Aizley—Warden, Ed Cohen—Scribe, and Don Shapiro—Chaplain.

*(Ed. Note: Kappa Zeta Phi finished runnerup for the PLUME trophy.)*  
—HARVEY BERSON

## NYU (Heights), Epsilon Gamma

The squeals of screaming sirens plus flashing beams of red and blue lights saturated Andrews Avenue as the brotherhood of Epsilon Gamma was greeted by firemen extinguishing the accidental ignition of their Bronx chapter house. Even before the last smoldering ashes were put out, the brothers, led by Chancellor Steve Friedman and Vice-Chancellor Joel Albert, immediately began extending themselves to the utmost in rebuilding the fraternity, structurally and spiritually, and propelling the chapter to greater heights than ever before.

On campus, whenever leaders of the students meet, TEPmen are present. For Junior Class officers, Brother Barry Olshen, pledge warden, is Vice President, while Brother Twedge Friedman is Secretary of the class and Secretary of the Interclass Council. Brother Mike Macowski is Treasurer of the New Hall Dorm Council, and Historian Cary Sklaren is the Head Hazing Master for the Freshman Orientation program at school this fall.

When sports buffs discuss this past spring's intramural events, the name of Al Wollerstein strikes fear into the hearts of all competitive sprinters as he won an incredible double victory in the 100 and 220 yd. intramural championships. This feat, plus Epsilon Gamma's prowess in eight-man football, basketball, swimming, and cross country, enabled the chapter to finish a perspiring fourth in the race for the overall IFC sports trophy.

In the realm of scholastics, our brotherhood continued to make a very admirable showing. A large percentage of the membership is on Dean's List, while many of the seniors have been accepted into the finest medical and law schools in the nation. Individually, Junior Richie Hirsh was elected to Sigma Pi Sigma, and graduates Mike Brody and Dave Ross became members of Joseph Park Historical Society.

These accomplishments, however, are of the past, and when autumn rolls around, our old house on Andrews Avenue will have to be rebuilt, repainted, and refurnished.

—CARY SKLAREN



## Clark, Epsilon Xi

For Epsilon Xi chapter, one of TEP's newest, this past year proved successful. The chapter fared well in rushing acquiring over fifteen new members, and finished admirably in all fraternity competition.

Individually, several members did well for themselves and for the chapter. Brother Bruce Jed, former Vice-Chancellor, was elected to "Gryphon" which is Clark's Men's Senior Honorary Society. He thus qualifies for the 1962-63 *Who's Who in American Colleges*.

Brother Robert Pellegrini has been elected to Psi Chi, national Psychology Honorary Society. Brother William Laveille is present chapter chancellor.

It will house 60 men and its spacious kitchen and dining facilities will accommodate over 120. The new house will occupy the site of the old house which was demolished after many years of TEP service and tradition in May.

The Alumni Building Committee received unanimous support for the building project. At the first unveiling of the New House plans before an Alumni meeting in Boston, over \$6,000 was pledged. To date much more money has been committed to the fund, with alumni, friends, and undergraduates continuing their donations.

Tau Pi's new home, the first completely new fraternity house built at the University in over 20 years, came through efforts led by alumni Samuel Fein, Merwin Rubin, Irwin Goldblatt, Elliot Allen, Earl Winer, and undergraduate chancellors Fred Shotz and Barry Weiner. For TEP and Tau Pi, it is a dream come true.

## CHAPTER ETERNAL

Bro. Vincent Weisman, Tau Delta 207, Dayton, Ohio, in March, 1962.

Bro. Max Zerler, Gamma 281

Bro. George Singer, M.D., Zeta 99, Bronx, New York.

Bro. David Sterling, Epsilon Gamma 10, Spring Valley, New York.

Bro. Sam Cohen, Rho 10, Philadelphia, Pennsylvania.

Bro. Saul N. Schechter, Tau 35, judge in Warren County, New Jersey, who became a county judge in 1959 following service as deputy attorney general.

## Construct New Chapter House At Massachusetts

A brand new chapter house, worth over \$250,000, is presently under construction at the University of Massachusetts for TEP's Tau Pi Chapter. With actual construction begun May 8, the house is expected to be completed during September.

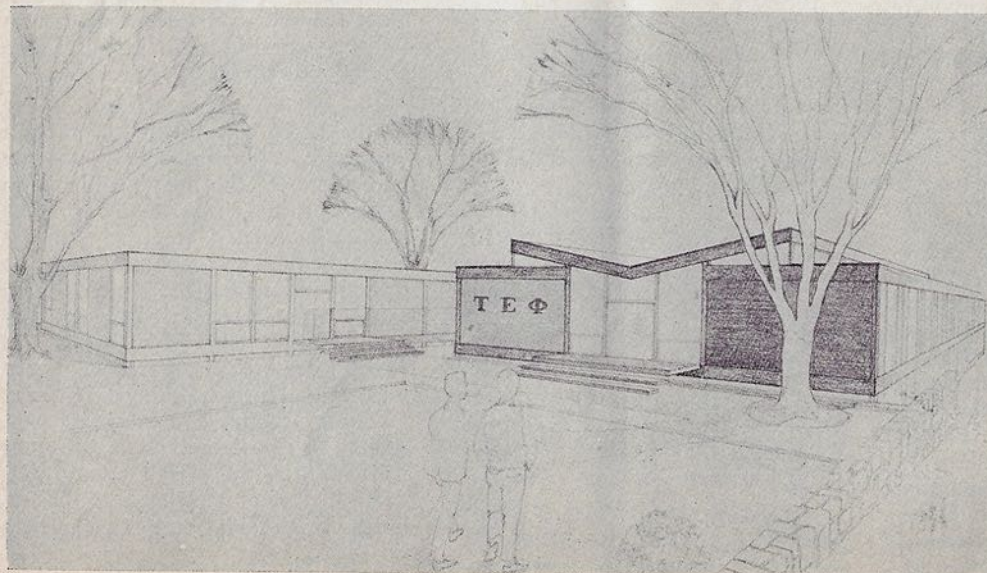
## 10 Cents—a 10th of a Dollar

Side show barkers used to talk in that language in the days before inflation.

We have another tale of woe about that thin dime. That is exactly what it costs us when the Post Office Department notifies us you have moved (the cost was doubled recently). Not much in itself, truly. But when the number of notifications mount—

as they have an unfortunate habit of doing—the cost is a sizable one in the magazine budget.

**MORAL:** When you move, send your new address well in advance to: Tau Epsilon Phi Fraternity, 130 West 42nd Street, New York 36, N. Y.



For TEPmen at the University of Massachusetts, a new \$250,000 house will be ready for occupancy this fall. Tau Pi's new house came through efforts led by local alumni and undergraduates, and will be the first new fraternity house at the University in over 20 years.



## Queens, Ep. Theta

For Epsilon Theta Chapter at Queens College, this past school term proved most successful and resulted in added prestige for TEP at Queens.

Dr. Harold Stoke, President of Queens College, visited the house on April 15. Before a large gathering, Dr. Stoke lectured about the college, and political science. The affair, one of the chapter's newly arranged cultural programs, also featured a discussion relating to the controversial speaker program at the City Colleges.

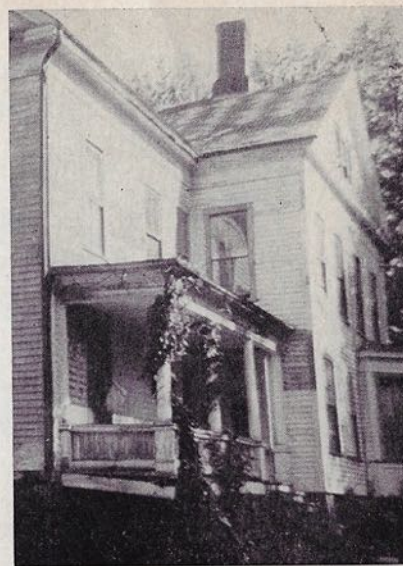
Earlier in the year, the chapter ran "The Rumble", the most successful dance held at Queens all year. Over 500 people were entertained by a live band and the vocal tones of "The Devotions". The dance succeeded due to the combined efforts of the entire brotherhood under the leadership of Chancellor Jay Wolpert.

Athletically, TEP proved its versatility by finishing in the semi-finals or finals in virtually every intramural sport. Brothers Mike Block and Steve Zeigfinger were named to the IFC all-star basketball team.

In other activities, the chapter won the Queens College Song Fest thanks to a skit written by Bro. Jeff Bennett. Epsilon Theta ranked second among sixty entrants in the college Calypso Carnival, and as a result, Bro. Irv Hymson should be appointed to next year's carnival committee.

Bro. Charles Laiken gained election as vice-president of IFC, while Bros. Elliot Barkan and Mike Korn made Phi Beta Kappa.

At a dinner dance held at the Coral Inn on June 8, Barry Blechman was installed Chancellor; Mike Block, Vice Chancellor; Steve Zimney, Scribe; and Bob Billig, Bursar.  
—BOB FIHRER



Home, sweet home, for Tau Pi Chapter at the University of Massachusetts. This structure was demolished in May in favor of new \$250,000 house (drawing on opposite page), now being constructed (wonder why?).

## TEPMEN ! ! ! ! !

### We Need Your Help in Rushing to Get the Best Men

Now that all High School seniors have selected the colleges or universities they will attend in the Fall, you can help our chapters by submitting the names and addresses of such prospectives you know who will be entering schools in which we have chapters. Such information will give our chapters the jump in rushing them and may well be the deciding factor as to which house they go.

With booming enrollments in all institutions, and crowded conditions in all chapters, your recommendation may well help to get a boy you know, or want to be a TEP, to get a bid.

Check the list of chapters on the inside of the front cover and make your recommendations on the spaces below and send them to:

Tau Epsilon Phi Fraternity  
National Rushing Chairman  
130 W. 42nd Street, New York, N. Y.

Rushee's Name .....  
Address .....

Rushee's Name .....  
Address .....

College entering .....  
Relationship .....  
Comments .....

College entering .....  
Relationship .....  
Comments .....

Your Name .....  
Address .....  
Chapter .....

## RUSHING IS THE LIFE BLOOD OF THE FRATERNITY!



# TEPROGRESS

## ENGAGEMENTS

- |  |   |  |
|--|---|--|
| Bro. Michael Richman, Zeta Lambda Phi, to Merle Krausen  | Bro. Fred Lord, Tau Zeta, to Barbara Flewelling       | Bro. Ronald Margolis, Sigma, to Meryle Bernstein   |
| Bro. Alan Lang, Zeta Lambda Phi, to Rhonda Dientzman     | Bro. Joe Donovan, Tau Zeta, to Holly Parkhurst        | Bro. Robert Freifield, Sigma, to Judy Peretzman    |
| Bro. Eugene Margolis, Epsilon Iota, to Sally Fay Gellman | Bro. Sterling Berger, Epsilon Gamma, to Leta Skolnick | Bro. Robert Kaye, Sigma, to Donna Freedman         |
| Bro. Gary Toback, Alpha, to Phyllis Brooks               | Bro. Larry Borah, Epsilon Gamma, to Beverly Besselman | Bro. Morris Weinberg, Tau Zeta, to Norma Passikoff |
| Bro. Herb Cover, Kappa Zeta Phi, to Arline Feibel        | Bro. Gregory L. Cardinal, Epsilon Xi, to Theo Bugsch  | Bro. Stanley J. Hite, Nu, to Barbara Fields        |

## MARRIAGES

- |  |  |   |
|--|--|---|
| Bro. Robert Willner, Alpha, to Sophia Zalkin       | Bro. Robert Snyder, Alpha, to Patricia Stegman           | Bro. Ernest Hilton, Tau Zeta, to Patricia Nossiter    |
| Bro. Jerry Engelberg, Alpha, to Nancy Bach         | Bro. Sheldon Fogel, Omega, to Judith Katon               | Bro. Stanley Kirschner, Gamma, to Linda Barth         |
| Bro. Marvin Lazerson, Alpha, to Judith Schoenholtz | Bro. Kenneth B. Newman, Kappa, to June Jacobs            | Bro. Carl Peterson, Epsilon Theta, to Barbara Tinsley |
| Bro. Sheldon Isenberg, Alpha, to Joan Packer       | Bro. Martin M. Butwin, Gamma, to Sandra Coleman          | Bro. Bruce Kalodney, Epsilon Theta, to Eileen Young   |
| Bro. Charles Nadler, Alpha, to Susan Gendelman     | Bro. Barry Nitkin, Sigma, to Phyllis Skolsky             | Bro. Marshall Wolf, Tau Delta, to Marilyn Rothman     |
| Bro. Fred Ronai, Alpha, to Maureen Besdine         | Bro. Tom Hyman, Kappa Zeta Phi, to Jeanette Bernstein    | Bro. Isaac Boniuk, Tau Iota, to Isabel Tanzman        |
|  | Bro. Stanley Ziefert, Epsilon Gamma, to Linda Mandelbaum |   |

## BIRTHS

- |  |  |   |
|--|--|---|
| To Bro. and Mrs. Peter Ehrenhaft, Alpha, a daughter, Elizabeth Ann     | To Bro. and Mrs. Hugh M. Odza, Tau Theta, a future TEP, James Roy        | To Bro. and Mrs. Ken Tyman, Alpha, a future TEP, James                  |
| To Bro. Dr. and Mrs. Howard Caplan, Alpha, a daughter, Amy Lynn        | To Bro. and Mrs. Robert Giden, Gamma, a daughter, Donna Ann              | To Bro. and Mrs. Donald Miller, Epsilon Kappa, a daughter, Haley        |
| To Bro. and Mrs. Josh Greenberg, Alpha, a future TEP, James Adam       | To Bro. and Mrs. Saul B. Needleman, Rho Delta Rho, a daughter, Beth Hali | To Bro. and Mrs. Richard Werksman, Alpha, a daughter, Rachel            |
| To Bro. Dr. and Mrs. Burton Horowitz, Alpha, a daughter, Mara Jean     | To Bro. and Mrs. Peter Spaulder, Alpha, a daughter, Debra Val            | To Bro. and Mrs. Irwin Brownstein, Epsilon Lambda, a daughter, Joy      |
| To Bro. Dr. and Mrs. A. Herbert Schwartz, Alpha, a daughter            | To Bro. and Mrs. Andrew Rivkind, Phi, a future TEP, Jerald Charles       | To Bro. and Mrs. Jerry Linkin, Theta, a future TEP, Tyler Lewis         |
| To Bro. and Mrs. Al Fendrick, Alpha, a daughter, Sarah                 | To Bro. and Mrs. Robert Maurer, Rho, a daughter, Ellen Jo                | To Bro. and Mrs. Arnold Glenn, Tau Delta, a daughter, Melinda Elizabeth |
| To Bro. and Mrs. Herb Max, Alpha, a future TEP, David                  | To Bro. and Mrs. Bernie Speyer, Tau Delta, a daughter, Barbara Joy       | To Bro. and Mrs. Robert A. Berlin, Tau Psi, a future TEP, Robert Jr.    |
| To Bro. and Mrs. Sanders Heller, Tau Delta, a future TEP, Stephen Mark |  | To Bro. and Mrs. Gordon Simon, Tau Iota, a future TEP                   |



IT IS WITH THE GREATEST  
PLEASURE YOUR GRAND  
COUNCIL INVITES YOU TO

# Become a LIFE SPONSOR of Tau Epsilon Phi

In celebration of the Golden Anniversary of the fraternity, the Grand Council offers you, the alumni and undergraduates, a new opportunity in membership.

Now, for the first time in the history of the fraternity, you can become a Life Sponsor, a new status that includes the Plume for life, freedom forever from all alumni dues, a hand engraved wall plaque suitable for framing and an engraved billfold identification card, PLUS the satisfaction of being a lifelong backer of TEP's great program for college men of every age.

Even discounting inflation and the possibility of a dues increase, it is still just plain good business sense to become a Life Sponsor. At the present dues rate of \$5.00 per year, it takes only 20 years to match the purchase price of a Life Sponsorship.

Now is the time to join. The sooner you do it, your investment will grow and grow.

Life Sponsorship fees are \$100, payable in one sum or in five annual, equal \$20 installments. From that time on, you will be free of alumni dues forever.

Clip the coupon on this page and mail your check for \$100 today!

I wish to take this  
opportunity to be-  
come known as a

## LIFE SPONSOR

of Tau Epsilon Phi. I  
have enclosed my  
check to the fratern-  
ity for the amount  
indicated below.

☐ \$100 full lifetime payment.

☐ \$20 the first of five annual  
payments.

Fraternally,

name

address

chapter



# Professional Directory

Brothers who are members of the National Alumni Chapter, or are Life Members may obtain listing in this Professional Directory by the Payment of an additional five dollars. This fee entitles the brother to a listing according to profession or business in four issues of the *PLUME*. If you desire a listing, kindly communicate with the National office.

## ACCOUNTANTS

### Florida

EARL M. RUBIN, *Tau Xi*  
c/o 5436 S.W. 8th St., Miami

### Maryland

MAXWELL REINSTEIN, *Pi 326*  
260 Congressional Lane  
Rockville, Md.  
(C.P.A.)

### New York City

MILTON H. LANZ, *Gamma*  
12 E. 41 Street, New York 17,  
(C.P.A.)

### New York

JERALD WEISBERG, *Epsilon Rho*  
832 Troy Street,  
Elmont, New York

## ADVERTISING AND PUBLIC RELATIONS

### New York

JAY GRABER, *Delta*  
Perfect Letter Co. (Direct Mail)  
449 Broadway, New York  
MALVIN ROBERT PECK, *Tau Beta*  
Advertising Distributors of America, Inc., (Direct Mail)  
400 Madison Ave., New York

## ARCHITECTS

### District of Columbia

VICTOR SMOLEN, *Phi*  
1029 Vermont Ave., Washington,  
D. C.

### Pennsylvania

S. HERBERT HERMAN, *Rho*  
925 Dunary Road, Philadelphia,  
Pa.

### Tennessee

PAUL H. BELZ, *Phi*  
1175 Morehead, Memphis

## ATTORNEYS

### Canada (Quebec)

HARVEY CRESTOHL, *Omicron 113*  
1454 Mountain St., Mt. Royal  
Montreal, P. Q.  
H. REUBEN COHEN, *Tau Iota 43*  
Suite 205, 1111 Main St., Montreal, N. B., Canada

## California

WILLIAM MANNS, *Tau Gamma*  
430 North Rodeo Dr., Beverly Hills  
U. R. GERECHT, *Gamma*  
210 Douglas Bldg., Los Angeles

## Connecticut

CHARLES HENCHEL, *Epsilon*  
205 Church St., New Haven  
ARTHUR M. LEWIS, *Theta*  
Danaher, Lewis & Tamoney  
75 Lafayette St., Hartford  
ISRAEL NAIR, *Iota*  
City Hall Bldg., New Britain  
HERBERT OLDER, *Gamma*  
37 Lewis St., Hartford  
EDWARD SCHINE, *Theta*  
1115 Main St., Bridgeport, Conn.  
RICHARD SESERMAN, *Tau Mu*  
190 Trumbull St., Hartford

## District of Columbia

BERNARD MARGOLIS, *T Theta*  
1000 Vermont Ave. N.W., Washington

## Florida

DAVID M. BLOOMBERG, *Tau Xi*  
717 Seybold Bldg., Miami  
BARTON S. GOLDBERG, *Tau Xi 23*  
605 Lincoln Road, Miami Beach  
ALAN E. GREENFIELD, *Tau Xi*  
3995 N.W. 25 St., Miami  
LOUIS LEIBOVITZ, *Tau Alpha*  
205 Worth Ave., Palm Beach  
LEONARD ROBBINS, *Tau Alpha*  
1939 Harrison St., Hollywood  
NORMAN K. RUTKIN, *Theta*  
405 Industrial National Bank  
25 W. Flagler, Miami  
AL L. SCHNEIDER, *Tau Alpha*  
812 Lynch Bldg., Jacksonville  
ARTHUR N. SHEPPARD, *Rho*  
223 S.E. First St., Miami  
HAROLD TURK, *Tau Xi Assoc.*  
Turk & Newman  
420 Lincoln Rd., Miami Beach

## Georgia

MORTON P. LEVINE, *Nu 219*  
2505 Bank of Georgia Bldg., Atlanta  
JULIAN B. TURK, *Nu*  
Levine & Turk  
Suite 1240 Citizens Southern  
Nat'l Bank Bldg., Atlanta 3

## Illinois

SAMUEL M. FRIEDLANDER, *Psi*  
Lehmann Bldg., Peoria  
ALLEN S. GERRARD, *Psi 461*  
1 N. LaSalle St., Chicago, Ill.  
LEONARD H. LAUTER, *Psi*  
1 N. LaSalle St., Chicago 1. Ill.  
NORMAN LETTVIN, *Rho Delta Rho*  
(Patents and trademarks)  
135 S. La Salle St., Chicago  
BERNARD M. PESKIN, *Rho Delta Rho*  
33 N. La Salle St., Chicago  
(Member, State Legislature)  
HAROLD TUCKER, *Psi*  
33 N. La Salle St., Chicago

## Kentucky

ERWIN A. SHERMAN, *Tau Chi 11*  
300 S. Fifth Street, Louisville

## Maryland

I. DUKE AVNET, *Gamma*  
602-3 Knickerbocker Bldg.  
220 E. Lexington St., Baltimore  
MARK D. COPLIN, *Tau Beta*  
10 Light St., Baltimore 2

## Massachusetts

WILLIAM L. BERGER, *Theta*  
209 Washington St., Boston

ERWIN E. COOPER, *Tau Zeta*  
Kabatznick, Stern & Cooper  
10 State St., Boston  
SAMUEL L. FEIN, *Gamma*  
1421 Main St., Springfield  
SHERMAN E. FEIN, *Theta*  
1421 Main St., Springfield  
MYER L. FELDMAN, *Theta*  
316 High St., Holyoke  
IRWIN R. MACEY, Esq., *Theta 272*  
Macey and Macey, 100 Boylston St., Boston

## New Jersey

LLOYD D. ELGART, *Rho*  
4806 Bergenline Ave.  
HERMAN M. GERBER, *Rho*  
Aker Bldg.  
E. Main St., Tuckerton  
SHERWIN D. LESTER, *Delta*  
921 Berger Ave., Jersey City  
JACOB LEVINSON, *Epsilon*  
265 Hobart St., Perth Amboy  
MILTON ROSENKRANZ, *Delta*  
921 Bergen Ave., Jersey City  
MAURICE A. ROSS, *Tau Delta*  
326 Broad St. Bank Bldg., Trenton  
NATHAN C. STALLER, *Zeta Lambda Phi*  
2601 New Jersey Ave., Wildwood  
SAMUEL W. STRAUSS  
*Zeta Lambda Phi*  
115 N. Fourth St., Camden  
BERNARD VERNEY, *Iota*  
1060 Broad St., Newark  
BARRY M. WEINBERG, *ZLP*  
115 North 4th St., Camden 2,  
New Jersey

## New York

JACOB AKS, *Delta*  
1 Jones St., Monticello  
IRA M. BALL, *Rho*  
First National Bank Bldg., Utica  
S. SANFORD ENGEL, *Sigma*  
712 Empire Bldg., Syracuse  
GEORGE SAPAN, *Gamma 92*  
50 Court Street, Brooklyn, N. Y.  
ALBERT ORENSTEIN, *Sigma*  
1024 Onondaga City Savings  
Bank Bldg., Syracuse  
NATHANIEL RUBIN  
2 Cannon Street, Poughkeepsie  
IRWIN SIMENOWITZ, *Phi Lambda*  
55 E. Jericho Turnpike  
Mineola, N. Y.

## New York City

### Manhattan

IRWIN N. ALBERTS, *Tau Pi*  
c/o Nat'l Labor Relations Board  
745 5th Ave.  
JEROME M. BERLINER, *Delta 203*  
Ostrolenk, Faber, Gerb & Soffen  
10 E. 40th St.  
(Patents and trademarks)  
RUBIN COWEN, *Epsilon*  
549 Brook Ave., New York 55  
IRWIN K. FINGERIT, *Kappa*  
Hecht & Fingerit  
154 Nassau St., N.Y.C.  
JACK FOX, *Rho*  
115 Broadway, New York 6  
LOUIS A. KASS, *Delta*  
(Bar Exam Cram Course)  
25 Broad St., New York 4  
DANIEL S. LEVY, *Gamma*  
40 Exchange Pl., N.Y.C.  
HARRY MALTER, *Delta*  
165 Broadway, New York  
HARRY MEISNER, *Epsilon*  
51 E. 42 St., New York  
HERBERT MONTELEVY, *Alpha*  
11 East 44 St., New York 17  
JOSEPH POMERANZ, *Tau Lambda*  
276 Fifth Ave., New York 17  
MICHAEL ROMANOFF, *Tau Lambda*  
71 Gansevoort St., N.Y.C.  
STANLEY I. SCHACHTER, *Alpha*  
Matalon & Schachter  
276 5th Ave., New York 1

## Ohio

BERNARD L. GOLDMAN, *Chi*  
1400 W. 6th St., Cleveland  
WILLIAM F. STEINER, *Tau Delta*  
1150 Terminal Tower, Cleveland

## Pennsylvania

DONALD KEESAL, *Zeta Lambda Phi*  
124 N. 18th St., Philadelphia 3  
BERNARD S. LEVY, *Zeta Lambda Phi*  
RTCI PSFS Bldg., 12 S. 12 St., Philadelphia 7  
HARRY SPORKIN, *Tau*  
602 Finance Bldg., Philadelphia

## Virginia

SAMUEL A. KUSHNER, *Tau*  
303 Masonic Temple, Danville  
ISRAEL STEINGOLD, *Pi*  
Mutual Bldg., Richmond 19

## Japan

HAROLD OPPENHEIM, *Theta*  
53 Yamashita-Cho, Yokohama

## BROKERS

### Florida

HERBERT POTASH, *Tau Xi*  
1065 97 St., Miami Beach

### Illinois

MARVIN L. GUMBINER, *Psi*  
4625 W. Grove  
Skokie  
(Stocks & Bonds)

### Maryland

SAMUEL M. WASSERMAN, *Tau Beta*  
Stein Bros. & Boyce  
6609 Reisterstown Rd.  
Baltimore 2, Md.  
(Stocks & Bonds)

### Massachusetts

ALFRED CUTTER, *Theta*  
350 Washington St., Brighton  
(Investment Securities)

### New York

DAVID ZAITZ, *Rho*  
Hightstown, New York  
(Livestock Broker)

### New York

MARTIN A. FLEISCHER, *Sigma*  
Investors Planning Corp. of America (Mutual Funds)  
60 E. 42 St., New York  
TED HARRIS, *Sigma*  
(Walston & Co.)  
74 Wall St., New York  
MARTIN B. KLOTZ, *Kappa*  
745 Fifth Ave., New York 22  
ROBERT LOEWENTHAL, *Tau Rho*  
(Hirsch & Co.)  
655 Madison Ave.  
(Stocks)  
MANNY SHERMAN, *Theta*  
Orvis Bros.  
15 Broad St., New York  
(Stock Broker)  
BERTRAM TIMONER, *Delta*  
Hirsch & Co.  
(Stocks, Bonds & Commodities)  
655 Madison Ave., New York  
LEO YOUNG, *Gamma*  
70 N. Main, Freeport  
(Frozen Foods)

## Ohio

AARON N. MINTZ, *Tau Delta*  
3974 Lansdale Road, Cleveland  
18. (Food)

## BUILDERS AND CONTRACTORS

### Connecticut

HOWARD B. FALK, *Tau Mu*  
187 Griswold Dr., West Hartford  
(Builders & Developers)



## Illinois

STANLEY I. CORMAN, *Tau Lambda*  
3825 N. Ashland, Chicago  
(Paving)  
TED COHAN, *Rho Delta Rho*  
Abbey Electric Co.  
15 E. 69th St., Chicago

## New Jersey

SEYMOUR WEISBERG, *Tau Lambda*  
Weisberg Plumbing & Heating  
111 52nd St., W. New York

## New York

SAMUEL J. LEFRAX, *Tau Beta*  
The Lefrak Organization  
(See Real Estate)  
97-27 64th Rd., Forest Hills  
MARTIN GOODSTEIN, *Tau Nu-R19*  
Goodstein Bldg. Corp., Apartment  
House Construction, 516 Fifth  
Ave.

## Ohio

ALEX G. SIEGLER, *Tau Delta*  
A. Siegler & Sons Builders, Inc.,  
5117 Lee Road, Maple Heights

## BUILDING MAINTENANCE

### New York

ARNOLD SENTER  
Empire State Office & Maintenance  
Co., Inc., 156 5th Ave.  
(Janitorial)

## BUSINESS MACHINES

### California

PHILIP GOFSTEIN, *Tau Epsilon*  
Underwood Corp.  
3251 Wilshire Blvd.  
Los Angeles 29

## CAMERAS

### Panama

JOSE B. ETTSACK, *Tau Xi*  
(International Photo, Inc.)  
P.O. Box 1878-151 Central Ave.  
Panama, Republic of Panama

## CAMPS

### New York

MARVIN B. EDELMAN, *Tau Mu*  
Camp Windham (Diamond J.  
Ranch, Windham Center, Conn.)  
2110 Barnes Ave., New York,  
N. Y.  
CHARLES W. KLEIN, *Epsilon*  
(Island Lake Camp for Boys  
& Girls, Wayne County, Pa.)  
20 S. Broadway, Yonkers  
EDWARD RONKIN, *Tau Beta*  
1488 Sylvan Lane, E. Meadow,  
Long Island  
(Camps Hi-Lake & Winona,  
Lake Como, Pa.)

## CHEMISTS

### New York

S. CHARLES LERNER, *Delta*  
Associated Analytical Laboratories  
(chemical analysts) and National  
Diagnostic Laboratories (medical  
and clinical analysts), 203 E. 37  
St., New York 16  
DR. I. SCHWARTZ, *Alpha*  
c/o Bendiner & Schlesinger  
Third Ave. & 10th St., New York

## CHIROPRACTOR

### Florida

DR. WILBUR M. WISNER, *Sigma*  
623 71 St., Miami Beach

Spring, 1962

## CLEANING, LAUNDER- ING, DYEING

### Ohio

ARNOLD C. COHN, *Tau Delta*  
(Chain store cleaning & laundry)  
60 Willard St., Akron 5  
EDWIN CONN, *Psi 195*  
759 N. Portage Path, Akron 3

## COMPTROLLER

### Maryland

NORMAN GOLDBLOOM, *Tau Mu 183*  
302 Sisson St. (G.E.M. Stores),  
Silver Spring

## DEALERS

### California

HARRY W. ABELSON, *Nu*  
Abel Products Co. (Medical,  
Surgical, and Laboratory  
Specialists)  
856 W. 58 Pl., Los Angeles 44

### Connecticut

JOSEPH M. COHEN, *Sigma*  
44 Lindale St., Stamford, Conn.  
(Wholesale & Mfg. Food Products)

### New York

EUGENE V. BANDLER, *Sigma*  
(Tri-County Farms  
(Wholesale Food))  
25-75 Francis Lewis Blvd.,  
Flushing 58  
WILLIAM H. JAFFE, *Gamma*  
1932 Jerome Ave., Bronx, N. Y.  
(Tires)

### Ohio

YALE BLOOM, *Tau Delta*  
H. Bloom & Co. (Scrap)  
Lima

## DENTISTS

### California

DR. GERALD MELLE, *Tau Gamma 293*  
4550 Wilshire Blvd.,  
Los Angeles, Calif.

### New Jersey

DR. NATHANIEL Z. FRAYNE, *Tau Nu*  
2768 Hudson Blvd.  
Jersey City

### New York

MAXWELL B. COLTON, *Beta*  
45 W. 81st St., New York 24  
LAWRENCE RUBIN, *Eps. Gamma 95*  
1130 Pelham Parkway South,  
Bronx 61, N. Y.

## DENTAL EQUIPMENT

### New York

LARRY ROSENFELD, *Epsilon Rho*  
415 First Ave., N.Y.C.

## DESIGN

### New Jersey

HARRY EINSTEIN, *Phi 105*  
1107 Chandler Ave.,  
Nebetco Design, Roselle

## DRUGS

### Kentucky

JULIUS WISNIA, *Tau Lambda*  
Whipps Mill Drug, Louisville

## ENGINEERS

### Illinois

JOSEPH L. ABRAMS, *RDR*  
Chief Engineer—Electrical Con-  
tractor, St. Arnaud Electric  
Co., Chicago  
LOUIS ROSENSTEIN, *Psi*  
Luminous Ceilings, Inc.  
(Lighting)  
2500 W. North Ave., Chicago

### New York

JULIUS MICHAELS, *Phi*  
6500 Jericho Typl., Commack  
(Prof'l Eng. & Land Surveyors)

## FUNERAL DIRECTORS

### Illinois

MILTON YAFFE, *Psi*  
5206 N. Broadway, Chicago

## HOTEL AND MOTEL MANAGEMENT

### Florida

MARTIN LEVINE, *Tau Alpha*  
Beau Rivage Hotel, Miami Beach

### Massachusetts

ROGER A. SAUNDERS, *Tau Xi*  
Copley Square Hotel  
Boston, Mass.

### New York

SIDNEY J. COLEY, *Gamma*  
Mgr. Algonquin Hotel  
59 W. 44 St., N.Y. 36

### SIDNEY PERTNOF, *Eps.*

Coliseum House  
West 71 St. & B'way., N.Y.C.

## INSURANCE

### Connecticut

HARTT E. BERNSTEIN  
(Also Real Estate)  
10 Crossroads Plaza, W. Hartford

### Florida

ARTHUR JACOVITZ, *Tau Xi*  
1200 S.W. 1st St., Miami  
(All forms)

### Georgia

LOUIS J. LEVITAS, *Phi*  
55 Marietta St., N.W., Atlanta  
(New York Life Ins. Co.)  
WILLIAM L. WARONKER, *Nu 242*  
Waronker Ins. Agency  
1201 Atlanta Fed. Sav. Bldg.,  
Atlanta 3

### Illinois

PAUL PITALLIS, *RDR*  
1844 Michigan Ave., Chicago

### Maryland

MICHAEL C. HOLOFCENER, *CLU,*  
*Tau Beta*  
1413 Reisterstown Rd.  
Baltimore 8  
HU-6-2456

### New Jersey

WILBERT MARKS, *Tau Alpha*  
195 Broadway  
Paterson  
(Ins. Broker)

### M. MILTON SOBELL, *Tau 33*

General Agent,  
Manhattan Life Ins. Co.,  
Cooper River Plaza, Suite 5105  
Pennsauken

### New York

LEO GOLDSTEIN, *Theta*  
The Statler Hilton Hotel,  
Buffalo, N. Y.  
PHILIP S. MANNE, *Iota*  
(Broker & Public Adjust.)  
17 John St., New York  
MELVIN I. GOLUB, *CLU, Gamma*  
148-55 Hillside Ave., Jamaica

## INSURANCE COUNSELING

### Texas

PHIL PERLO, *Tau Beta*  
Ins. Counseling and Sales  
2100 Travis, Houston

## INVESTMENT BANKERS

### New York

LEROY KLEIN (President) *Sigma*  
DANIEL KAMINS, *Rho*  
Lebenthal and Co., Inc., 1 Chase  
Manhattan Plaza, New York City

## LINEN SERVICE

### New York

JOSEPH H. NADLER, *Theta*  
San Towel Service  
152 W. 42nd St., New York &  
P.O. Box 92, Nutley, N. J.  
(Office Towel Rentals)

## MANAGEMENT CONSULTANTS

### Illinois

KENNETH J. EATON  
Assoc. Business Consultants  
612 N. Michigan Ave., Chicago  
EDWARD WITTERT, *Psi*  
Frederick Chusidand Company  
205 West Wacker, Chicago

## MANUFACTURERS

### Georgia

HAL GAINES, *Tau Xi*  
1154 Reedy Circle N.E., Atlanta  
(Chemicals)

### Illinois

DAVID LEAVITT, *Tau Lambda*  
Leavitt Tube & Metal Co.  
(Electric welded steel tubing)  
1717 W. 115 St., Chicago

### Maryland

LEONARD EISENBERG, *Tau Beta*  
Lenmar Lacquers, Inc.  
3208 Shelburne Rd., and  
150 S. Calverton Rd., Baltimore

### New Jersey

ALVIN A. BIRNE, *Tau Lambda*  
Swan Michigan Oil Co.  
(Oils, greases, core binders)  
39 Zabriskie Ave., Bayonne  
ROBERT J. GOLDSTEIN, *Beta*  
Plastylite Corp.  
(Plastic molding and manufactur-  
ing, phonograph records)  
333 North Dr., N. Plainfield

### New York

JULES W. DAMSEY, *Kappa*  
162 5th Ave., N.Y.C.  
(Boys'-Students') Clothing  
SIDNEY GARDNER, *Nu*  
Alan-Roger, Ltd.  
(Men's slacks and sport coats)  
137 Fifth Ave., New York 10  
WILLIAM H. JAFFE, *Gamma*  
1932 Jerome Ave., Bronx, N. Y.  
(Jaffe Tire Co., Inc.)

### Texas

MARTIN D. SIEGEL, *Phi*  
Texboro Cabinet Corp.  
(Kitchen cabinets)  
Mineral Wells

## MOTION PICTURE THEATRES

### New Jersey

MAURICE J. MILLER, *Omega*  
19 Central Ave., Passaic



## PENSION PLANNING

### Maryland

STUART HACK, *Tau Beta*  
18 E. Lexington St.  
Baltimore, Md.

## PHOTOGRAPHY

### New York

MARK EIDLIN, *Psi*  
B. M. Eidlín & Co.  
(Also Real Estate & Investments)  
77 St. Paul St., Rochester

## PHYSICIANS

### DERMATOLOGY

#### Illinois

DR. MARTIN GECHT, *Tau Gamma*  
110  
1239 W. 18th St., Chicago

#### New York

JOSEPH L. MORSE, M.D., *Eta*  
521 Park Ave., N. Y. C.

### ENDOCRINOLOGY & NUTRITION

#### New York

DR. GEORGE B. DORFF, F.A.C.P.,  
*Gamma*  
135 Eastern Pkwy., Brooklyn

### OPHTHALMOLOGY

#### New York

DR. ROBERT M. STURMAN, *Alpha*  
8 East 84th St., New York  
(Diseases of the eye)

### OBSTETRICS AND GYNECOLOGY

#### Canada

DR. SIMON GOLD, *Omicron*  
5845 Cote-Yes-Neiges Rd.  
Suite 505, Montreal, P.Q.  
DR. NORMAN H. OLESKER, *Omicron*  
Medical Arts Bldg., Montreal

#### Massachusetts

DR. BERNARD LEDERMAN, *Lambda*  
311 Commonwealth Ave., Boston

## ORTHOPEDICS

### Illinois

DR. EDWARD S. GROSSMAN, *Psi*  
55 E. Washington Blvd., Chicago  
(Surgeon)

## SURGERY, GENERAL

### California

DR. LOUIS H. LAUFER, *Gamma* 382  
Van Owen Medical Group, 11432  
Van Owen Street, No. Hollywood

### New Jersey

DR. BURTON B. BERGMAN, *Mu*  
1156 Liberty Ave., Hillside, and  
31 Lincoln Park, Newark 2

### Tennessee

DR. MORTON J. TENDLER, *Gamma*  
899 Madison, Memphis

## GENERAL

### Florida

DR. JOSEPH B. POMERANCE, *Nu*  
Abbey Medical Center  
5190 S.W. 8th St., Miami 34

### New Jersey

DR. MURRAY N. MATEZ, *Nu* 130  
3107 Mt. Ephraim Ave.,  
Camden 4

## UROLOGY

### New York

DR. S. SYM NEWMAN, *Zeta*  
150 E. 52 St., N. Y.

## PRINTERS

### Florida

CHARLES ROSENBERG  
Rose Printing Co.  
P.O. Box 549, Tallahassee

### Illinois

GERALD SOKOLE, *Epsilon Delta*  
Wilmar Printing Corp.  
333 W. Lake St., Chicago 6

## PSYCHOLOGIST, CONSULTING

### New York

HOWARD M. HALPERN, Ph.D., *Sigma*  
2211 Broadway, New York

## PUBLISHERS

### Massachusetts

JAMES KAHN, *Theta*  
The Jewish Times  
118 Cypress St., Brookline

## REAL ESTATE

### Georgia

WILLIAM L. WARONKER  
Ward Realty Co., 1201 Atl. Fed.  
Sav. Bldg., Atlanta 3

### Connecticut

HARIT E. BERNSTEIN, *Tau Mu*  
(Also Insurance)

### Florida

ARTHUR B. LEIBOVIT, *Tau Alpha*  
230 Royal Palm Ways, Palm Beach

### Illinois

LESLIE AND HOWARD BLUM, *Psi*  
612 N. Michigan Ave., Chicago  
(Also Investments)

### New York

WILLIAM BERLEY, *Delta*  
Berley & Co., Inc.  
11 E. 36 St., New York  
STEPHEN B. DAVIS, *Theta*  
215 East 149 St., N. Y. (Sidney  
Newman Co.)

RICHARD M. DORFF, *Tau Beta*  
Hosinger & Bode  
Long Island, New York

SAMUEL J. LEFRACK, *Tau Beta*  
(Also see Builders)  
97-27 64th Rd., Forest Hills

DON LIEBERMAN, *Tau Xi*  
23-01 44th Dr., Long Island 1  
(Ind'l & Factories, Lofts, Land)  
SIDNEY J. LIPSON, *Rho*  
10 E. 52 St., N. Y. C.

### Ohio

HARRY A. FINKELMAN  
1400 Central Ave., Middletown  
(Insurance)

## RESTAURATEUR

### New York

ASHER A. ZELIN, *Tau Xi*  
Market Diners, Inc.  
6 Stores in N.Y.C.

## SALES MANAGER

### New York

MARVIN A. BERNARD, *Gamma*  
Rapid Film Technique, Inc., 37.  
02 27th St., L.I.C., N. Y.  
(Restoration of Motion Picture  
Film)

## SALES REPRESENTATIVES

### Illinois

ROBERT A. MALKIN, *Psi*  
Nortown Auto Sales  
Executive Auto Leasing  
6501 North Western Ave.  
Chicago 45

### New York

ROBERT K. LOW, *Gamma*  
161 6th Ave., New York  
(Savin Business Machines)  
IVES B. NATHAN, *Tau Gamma*  
Ives Distributors  
601 W. 26th St., New York 1  
(Office Equipment)

## SCHOOLS

### New York

L. PETER SEGAL, *Beta*  
(Nursery & Pre-Kindergarten)  
420 Webster Ave., New Rochelle

## TRANSPORTATION

### New Jersey

JEROME CASSER, *Psi*  
149 Liberty St., Little Ferry  
(Bus)

## TRAVEL AGENCY

### New York

JULIUS KATZEN, *Alpha*  
Roland Travel Agency  
10 East 40 St.

## VETERINARIAN

### Florida

DR. DAVID H. SPECHLER, *Mu*  
Broward Animal Hospital  
1180 N. Dixie Highway,  
Hollywood

### Connecticut

L. O. NEZVESKY, *Tau*  
6257 Main St., Trumbull

BE SURE ALL YOUR POTENTIAL RUSHEES ATTEND...

THE NATIONAL RUSH SMOKER

STATLER HILTON HOTEL

NEW YORK CITY

WEDNESDAY, AUGUST 29th, 1962

For Details—Telephone National Office—LA. 4-0544



# THE TAU EPSILON PHI FRATERNITY

## OFFICIAL DIRECTORY

Founded at Columbia University on October 19, 1910.

Incorporated under the laws of the State of New York on January 8, 1913.

Admitted to the National Interfraternity Conference as a senior member in 1919.

National Executive Offices, 130 West 42 St., New York 36.

Telephone LACKawanna 4-0544, Office open 9:30 to 5:00 P.M. daily except weekends. Sidney S. Suntag, Executive Secretary.

## THE GRAND COUNCIL

Consult: Joe H. Gerson, 2908 Nancy Creek Road, N.W. Atlanta, Ga.

First Vice Consul: Emanuel J. Evans, 1401 Fairview, Durham, N. C.

Second Vice Consul: Mendel Romm, Jr., Bank of Georgia Bldg., Atlanta, Ga.

Tribune: Erwin E. Cooper, 10 State St., Boston, Mass.

Assistant Tribune: Richard Barkin, 22 Kilby St., Boston, Mass.

Quaestor: Jack A. King, 5438 Euclid, Philadelphia, Pa.

Assistant Quaestor: Donald Rosenthal, 177 White Plains Rd., Tarrytown, N. Y.

## EX OFFICIO

Plume Editor: Stuart Smith, 248 E. 74th St., New York 21, N. Y.

## MEMBERS-AT-LARGE

Howard Agris, 2511 S. Garnet, Philadelphia 45, Pa.

Jack Berkowitz, 255 W. 88th St., New York, N. Y.

Yale Bloom, 1650 Lowell Ave., Lima, O.

Leslie Blum, 2930 Commonwealth, Chicago, Ill.

Abram I. Cohen, 491 Commonwealth Ave., Boston, Mass.

Arnold C. Cohen, 534 N. Portage Path, Akron, Ohio

Myer Feldman, 316 High St., Holyoke, Mass.

Jacob Freezer, 30 E. 71 St., New York, N. Y.

Sanders Heller, 11-15 Main St., Gouveneur, N. Y.

S. Matthew Helman, 1 Howland St., Roxbury, Mass.

Harris Jacobs, 596 Montgomery Ferry Dr. N.E., Atlanta, Ga.

Maxwell M. Kalman, 1200 St. Alexander St., Montreal, P.Q., Canada

Ben Kaplan, 29 Fairchild Place, Monticello, N. Y.

Samuel D. Karavan, 4818 Gransback, Philadelphia, Pa.

Samuel J. Lefrak, 97-27 64th Rd., Forest Hills, Queens, N. Y.

William Manns, 430 N. Rodeo, Beverly Hills, Calif.

Ralph Medjuck, 23 Connaught Ave., Halifax, N.S., Canada

Jack S. Mintzer, 6440 N. Bay Rd., Miami Beach, Fla.

Leo Schlossberg, 1000 Conn. Ave., N.W., Washington, D. C.

I. Edward Segal, 7302 S. Euclid, Chicago, Ill.

Bertram Shalman, 6451 Sprague St., Philadelphia, Pa.

## THE BOARD OF TRUSTEES

Dr. I. Schwartz, 157 W. Hudson St., Long Beach, L. I., N. Y.

George H. Behrens, c/o Practicing Law Inst., 20 Vesey St., New York, N. Y.

Arnold Glenn, 160 Broadway, New York 38, N. Y.

Dr. Jacob D. Gold, 1550 E. 17th St., Brooklyn, New York

Louis Kanegseiser, 625 N. Broad St., Elizabeth, N. J.

S. Charles Lerner, 135 E. 71st St., New York, N. Y.

Milton Pinkus, 250 Fulton Ave., Hempstead, L. I., N. Y.

Seymour Weisberg, 363 Jones Rd., Englewood, N. J.

Arthur Ochs, Jr., c/o United Factors, 1407 Broadway, New York 36, N. Y.

## PAST CONSULS

Samuel L. Fein, 1421 Main St., Springfield, Mass.

Sol D. Shaman, 1242 McNoughton Rd., Columbus 13, O.

Isadore Heiman, 1200 Howell Mill Rd., N.W., Atlanta, Ga.

Louis Manes, 2478 Worthington Rd., Akron, O.

## REGIONAL CONSULS

### Province

I Nat Lash, 68 Crescent Rd., Burlington, Vermont

Ila Stanley Jacobs, 223 Manthorne Ave., West Roxbury, Mass.

Iib Earl Gordon, 30 Hamlin Dr., W. Hartford, Conn.

III Ben Ungerman, 46 Eagle St., Albany, N. Y.

(V-C) Joe Ruderman, 945 Sherman St., Watertown, N. Y.

IVa Sidney Ross, 65-61 Saunders St., Forest Hills, N. Y.

(V-C) Bob Kramer, 898 Ivy Hill Rd., Woodmere, N. Y.

IVb Martin Zipern, 31 Ocean Parkway, Brooklyn, N. Y.

(V-C) Larry Gottlieb, 135-38 78th Ave., Flushing 67, N. Y.

V Sylan Euzent, Silver Springs, Md.

(V-C) Leonard Wissow, Philadelphia, Pa.

(V-C) John Smeyne, 4206 Springdale Ave., Baltimore, Md.

VI Unassigned

VII Owen R. Bressler, 2029 Airlene, Metairie, La.

VIII Leonard Seligman, The Howell House, 710 Peachtree St., Atlanta, Ga.

IX Irving Klepper, Fla. Title Bldg., Jacksonville, Fla.

(V-C) Leonard Wolf, 838 Edgewood Dr., Lakeland, Fla.

(V-C) Stuart Blumberg, 1975 Alton Rd., Miami Beach, Fla.

X Marcus Ruben, 1236 Lakewood Ave., Lima, O.

XI Leonard Lauter, 5033 N. Avers Ave., Chicago, Ill.

XII E. James Judd, 2026 Ash St., Denver, Colo.

XIII Jules B. Kaplan, 316 S. Rexford Dr., Beverly Hills, Calif.

## TRUSTEES OF THE SCHOLARSHIP AND STUDENT AID FUND

Ben Massell, Honorary President, Atlanta, Ga.

Dr. A. I. Cohen, President, Boston, Mass.

Jack A. King, Vice-president, Philadelphia, Pa.

Samuel W. Strauss, Secretary-Treasurer, Camden, N. J.

William Bernstein, Hartford, Conn.

Yale Bloom, Lima, O.

Leslie Blum, Chicago, Ill.

Frank Constangy, Atlanta, Ga.

Erwin E. Cooper, Boston, Mass.

Leon Crestohl, Montreal, Canada

George Feldman, Boston, Mass.

Alfred Garber, Atlanta, Ga.

Richard Heldeman, Jamestown, N. Y.

Sanders Heller, Gouveneur, N. Y.

Stanley Jacobs, Boston, Mass.

Samuel J. Lefrak, Forest Hills, N. Y.

William Manns, Beverly Hills, Calif.

Mendel Romm, Jr., Atlanta, Ga.

Sid Ross, Forest Hills, N. Y.

Leo Schlossberg, Washington, D. C.

I. Edward Segal, Chicago, Ill.

Seymour Weisberg, Englewood, N. J.

Jack White, Great Neck, N. Y.

## ALUMNI ASSOCIATIONS

Alabama State—President, Bertram Silman, Route 13, Box 352, Birmingham, Ala.

Baltimore—President, Sanford Fox, 4218 Lowell Dr., Pikesville, Md.

Charleston—President, Moses Mendelson, 455 King St., Charleston, S. C.

Chicago—Irving L. Missner, 233 Fairview, Glencoe

Cleveland—Leo K. Mintz, 3292 Milverton, Cleveland, Ohio.

Denver—President, Edward Korklin, 1085 Jasmine St., Denver, Colo.

Detroit—Reuben Wax, 18970 Lauder.

Georgia State—Julius A. Perlinski, 1087 Cumberland Rd. N.E., Atlanta, Ga.

Halifax—President, Ralph Medjuck, 23 Connaught Ave., Halifax, N. S.

Jacksonville—President, Irving Klepper, Florida Title Bldg., Jacksonville, Fla.

Metropolitan New York—President, Arnold Glenn, 160 Broadway, New York, N. Y.

Miami—President, Burton R. Levey, 8030 S.W. 63 Ct., Miami, Fla.

Montreal—President, Dr. William Slatkoff, 3097 The Blvd., Montreal, Quebec.

New England—President, Richard Barkin, 20 Kilby St., Boston, Mass.

North Carolina—President, Emanuel J. Evans, United Department Stores, Durham, N. C.

Northern New Jersey—Murray Sklar, 29 Hillside Terr., Livingston, N. J.

Philadelphia—President, Hugh Odza, Market St. Nat'l Bank Bldg., Philadelphia, Pa.

Southern California—President, Chuck Gelfand, 590 So. San Vicente Blvd., Los Angeles, Calif.

Washington, D. C.—President, Allan J. Fried, 8510 Milford Ave., Silver Spring, M.D.

Western Massachusetts—Ronald Zimmerman, 66 Chalmers St., Springfield, Mass.

Alpha—Stanley I. Schachter, 276 Fifth Ave., New York 5, N. Y.

Gamma—Louis Brause, 2797 Kingsbridge Terrace, Bronx 63, N. Y.

Delta—Sol Perlman, 1059 Washington Ave., Bronx, N. Y.

Theta—Alan B. Sostek, 28 Turner Terrace, Newton Centre, Mass.

Sigma—Harold Tompkins, 37 Wall St., New York, N. Y.

Tau Delta—Sol D. Shaman, 1242 McNoughton Rd., Columbus 13, Ohio.

Tau Zeta—Leonard Minsky, 46 Leighton St., Bangor, Me.

Tau Lambda—Stanley I. Corman, 7347 Damen Ave., Chicago, Ill.

Tau Rho—Paul Hachigian, 22 Leslie Dr., Wayne, N. J.

Tau Psi—Leonard D. Furman, 1013 Palisade Ave., Union City, N. J.

Rho Delta Rho—Albert Kraus, 1016 Ridge Ave., Evanston, Ill.

Epsilon Delta—Arthur Raybin, 1 Sadore Lane, Yonkers, N. Y.

Epsilon Iota—Richard E. Amsterdam, 68 Archer Drive, Bronxville, N. Y.

Zeta Lambda Phi—Jack A. King, 5438 Euclid Ave., Philadelphia 31, Pa.