

PLUMIE

ALL
MEMBER
EDITION

TEΦ

TAU EPSILON PHI

FOUNDED 1910

INTERNATIONAL COLLEGIATE FRATERNITY GROUP

WINTER, 1988

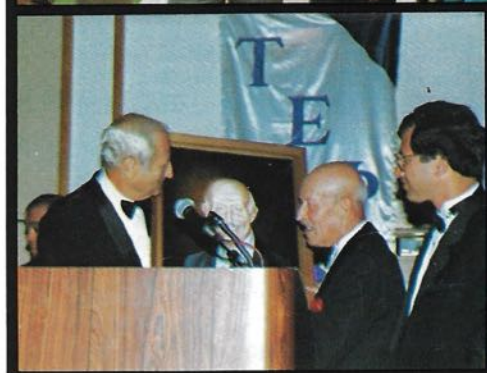
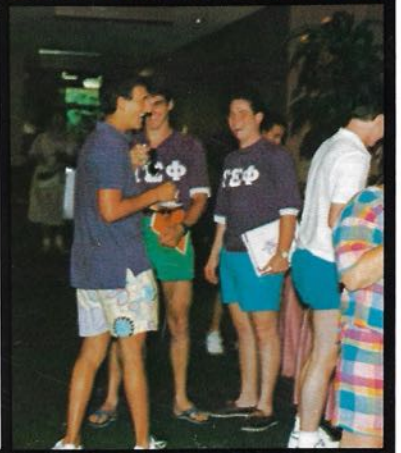
VOLUME LXXVI

USPS 436260

NUMBER 1



The
77th
National
Convention



In This Plume Issue . . .

From the Bald Eagle, Sidney Suntag	3
Introducing TEP's New Executive Director	3
1987 National Convention	5
TEPman of the Year Awarded	7
From the Consul	8
TEP Foundation Report	9
Chapter Highlights	10 & 11
TEP Foundation Award Winners	12
Expansion and Colony News	14
Alumni News and Highlights	16 & 17
Chapter Eternal	17
TEP, 25 Years Ago Today	19
TEP Gifts and Books	22

From The Editor . . .

Dear Brothers,

It is a pleasure to once again say hello to all our undergraduate and alumni brothers by way of our National magazine *The Plume*. Yet, I must first apologize for the delay in producing an edition of our 70 year old publication. It has been well over a year since our last edition due to numerous changes in the administrative workings of our National Fraternity. In the future, please expect regular communication from the National offices of Tau Epsilon Phi on the activities of our thousands of alumni and undergraduates.

I hope that you will find the enclosed information both informative and entertaining and that this magazine will bring back those fond memories of your years as a member of Tau Epsilon Phi. Please also note the variety of articles and material we have attempted to combine into this edition of *The Plume*. In the future, I encourage ya'll to take an active part in the publication of *The Plume* by way of articles and alumni notes to inform us of what's going on with each of you.

In the past few months, the Fraternity has begun to take leaps and bounds in the areas of expansion and undergraduate chapter development. Also, through the guidance of Executive Secretary Emeritus Sidney Suntag and Executive Director Bob Goldman, we have begun to reinstitute a Regional Governorship program to get our alumni back involved with our active chapters. Yet, another major goal is for increased communication between



Jonathan M. Seidel

the approximately 40,000 TEP men nationwide and our National Fraternity. With your help, we can accomplish these goals. Until then, enjoy!

Fraternally,
Jonathan M. Seidel
Assistant Executive Director and Editor
Tau Epsilon Phi Fraternity



*Happy New Year from
The TEP National Staff!*



THE PLUME

Published by Tau Epsilon Phi National Fraternity and printed in Atlanta, Georgia, four times a year. The *PLUME* is the Official Educational and Fraternal publication of the Fraternity and postage is paid in Atlanta, GA. Annual subscription rate for members and friends is \$10.00 and is included in the annual membership dues.

Tau Epsilon Phi is a charter member of the National Interfraternity Conference. Manuscripts, news items and photos are welcome. Photos should be sharp, glossy black and white prints.

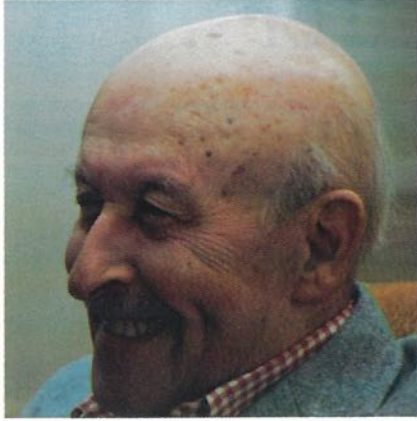
Address all correspondence:

Editor, the PLUME

200/3088 Mercer University Drive
Atlanta, Georgia 30341

Postmaster: Please send form 3579 to the above address.

From the 'Bald Eagle's Nest'



Sid Suntag

The Fraternity is fortunate to have acquired the services of Brother Robert S. Goldman as Executive Director on the resignation of Brother Mike Ivers last fall. Brother Goldman, Rho Chapter, Class of '55, of the Wharton School at the University of Pennsylvania, had previously served as Quaestor (National Treasurer) and had been reelected as Vice Consul on

the Executive Committee of the Grand Council at the Orlando 1987 Convention. Prior to his service in the upper echelons of the National organization, it can be safely said that he was chiefly responsible for the successful reactivation of Rho Chapter earlier in the decade through his dedication and devotion to the cause of TEP. Of even more significance, it was he who led the way in achieving permanent housing for his Chapter by cajoling the University to provide a suitable property. Unquestionably, the success of Rho, which now numbers almost 100 brothers, can be attributed to Bob's close guidance.

His love of TEP is now legendary, but equally important is his financial acumen built up over 30 years of successful business and allied operations in his adoptive City of Philadelphia. It is a known fact that extensive experience in business operations translates into tact and diplomacy on all levels of TEP operations. With the Fraternity now once again burgeoning, Brother Goldman's proven leadership and know-how will undoubtedly spell great strides for the Fraternity.



From the Desk of...



Bob Goldman

me the flame of service for the love of service. Well, it's now some 36 years since that time and obviously a lot has happened.

For those of you who already know me well, a personal "hello again". To those of you I have yet to meet, a hope that we can do so soon.

To *all of you*, some personal commitments:

During my 1951 initiation into the Portals of Tau Epsilon Phi, I could hardly have visualized someday sitting in the chair occupied at that time by our eminent "Bald Eagle", Sid Suntag (I believe thoughts of Joe Bloom more occupied my mind). Nor therefore, could I perceive of returning to Penn's Alumni Day 30 years later to find a TEP Colony seeking help, or that the new Counsel, Al Versacci, would rekindle within

- I will never forget who "*all of you*" are: Fraternity staff, undergraduates, alumni, Fraternity advisors, college administrators, parents, and inter-fraternity brethren. In reaching for our goals I will strive to focus on our shared objectives, not our differing agendas or perspectives;
- I will not, and cannot, lose sight of your need to understand what is expected of you and our need to know that you are doing your utmost to respond in a responsible manner;
- I will continually strive to respond in an equitable and expeditious way to your needs so long as you respond in kind to ours;
- I will always endeavor to work *with*, not *through*, people, encouraging the use of participatory management throughout our new organization comprised of Jon Seidel, Sid Suntag, Grace Jenkins, Anne Wellington, Ron Brooks, our Regional Governors, Associate Governors, Alumni Advisors, and Chapter Officers.

AND NOW,

A challenge to you:

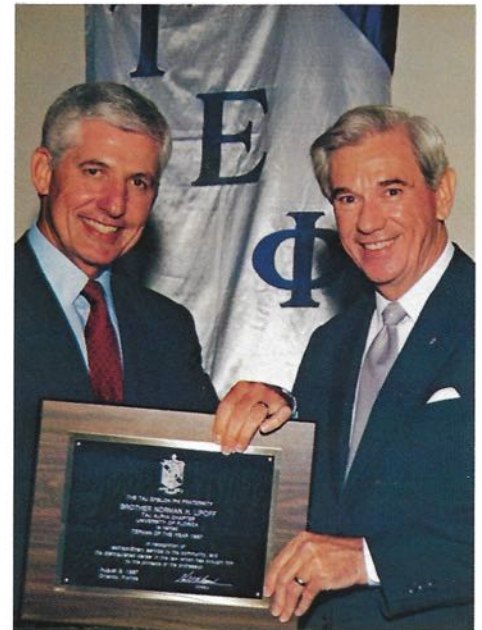
Help us do our job — let us know how we can do better. Later in this issue you'll find several forms — requests for information about you, prospective pledges, etc. Take a minute, fill them out, send them in — get involved — let me hear from you.

Let's move forward on this road of renewed growth together. We need to be a partnership in friendship.

Once Again TEP Proves That Nobody Does It Better



Tau Alpha (Florida) Brothers and families at our 1987 Convention banquet in Orlando, Florida.



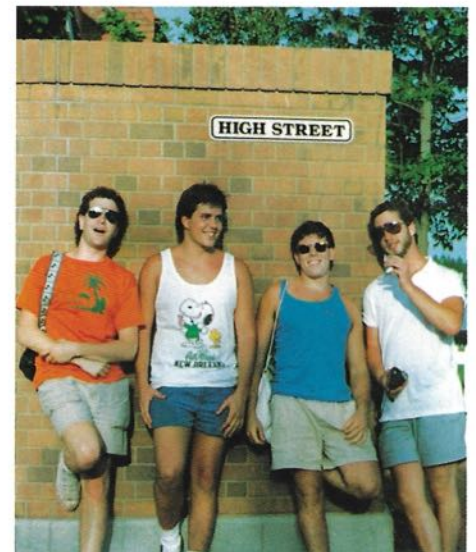
TEPman of the Year Brother Norman Lipoff (L.) with his business partner former Florida Governor Rubin Askew.



TEP International Consul Gerald Denmark, presenting undergraduate Brother of the Year Award to Paul Boni, Mu (Emory) '87, with TEP Foundation President Al Versacci.



University of Southern California Brother Tom Perumean.



Brothers Ellenby, Hoffman, Lazar and Seidel at Epcot Center.

ON THE COVER . . . (clockwise from upper left) (1) Brothers from Lynchburg, Maryland, George Washington and Towson State with Foundation President Versacci; (2) Epcot Center; (3) Penn State Brothers and Alumni with former TEP housemother; (4) Brothers Fish, Schiff and Slapp at Convention breakfast reception; (5) Michael C. C. Liliensfeld Outstanding Alumnus Award presented to Brother Sidney Haskins, Nu (Georgia), by Brothers Versacci and Denmark; (6) Brothers from Upstate New York chapters and Pennsylvania at Convention luncheon; (7) Brother Sidney Haskins, Nu (Georgia), presenting portrait of Executive Secretary Emeritus Sidney Suntag to Brother Gerald Denmark and Brother Suntag; (8) Brothers Ellenby, Seidel, Haas and Hill at Epcot.

CONVENTION HIGHLIGHTS...

Orlando Convention — Best Ever



For five solid days in August, undergraduate and alumni delegates enjoyed a convention to remember. Gathering in the sumptuous Orlando Hyatt Hotel the brothers began an odyssey of work and play that has rarely been matched in the past. Not only were the delegates treated to fine food and accommodations in the hotel, but almost every day an event was planned to augment the usual business meetings that are so important in TEP conventions.

On the very first evening the delegates attended the first Grand Chapter meeting to elect the Grand Chapter officers, who would preside over the meetings for the duration of the convention. As Grand

“The TEP National Convention gave each of us the opportunity to work and learn with our brothers from around the country on topics which are of importance to all chapters regardless of size or location.”

Chancellor (temporary chairman) the delegates chose Brother Mark Abramson, who had served his Chapter, Epsilon Kappa (Tulane), faithfully and well as Bursar, and then Chancellor. Following his graduation he became active in TEP National affairs by being elected a

Member-at-Large on the Grand Council.

With the fall of his gavel, Brother Abramson appointed the various Grand Chapter standing committees, such as: nominations for Grand Council office; Resolutions; Legislation; and Convention City. The convention was then underway. On the business side a series of seminars were conducted by such personages as Foundation President Al Versacci; Executive Secretary Emeritus Sid Suntag; Consul Jerry Denmark, Executive Director Mike Ivers, and others. Most interesting and informative was a video tape presentation on Risk Management, which is in the area of fraternity operations, almost a matter of life or death to all chapters. The other seminars on Rushing, Pledge Education, house management, leadership, etc., were well conducted by the Chairmen of each discussion. Without exception, delegates reported that they had received much valuable information to impart to their Chapters.

Each evening was devoted to the social aspect of the convention. Inasmuch as this convention, like so many others in the past, was held jointly with the Delta Phi Epsilon Sorority, the undergraduate brothers did not lack for female company once business meetings were over. Yet the Convention Committee provided for two dances with live music during the five evenings of the convention. On one of the evenings the delegates and alumni were bused to a local nightclub where they enjoyed a sumptuous meal and a fine

show. Following which all boarded buses to enjoy Orlando's night life for the rest of the evening.

Not surprisingly, with the convention being held in Orlando, time had to be set

“The Brothers thoroughly enjoyed the convention and the social interaction that they had with the Sisters of Delta Phi Epsilon Sorority.”

aside for a visit to world famous Disney World. With the Magic Kingdom being considered too juvenile, the Convention Committee made provision for all delegates to visit Epcot, the adult half of Disney World. On the third morning of the Convention buses drew up in front of the hotel and all brothers were whisked to Epcot where they spent a full day of fun.

The following day was devoted to the adoption of legislation, resolutions, recommendations for the site of the next convention, and the election of the new Grand Council. Surprisingly, the Nominations Committee recommended that the entire Executive Board of the Grand Council be reelected for a second term, led by Brother Gerald Denmark as Consul. Without dissent the entire slate was voted into office, and later that evening sworn to uphold the Constitution. The

(continued on page 6)

CONVENTION HIGHLIGHTS...

other members of the Board so elected were:

Robert Goldman, Rho (Pennsylvania),
Vice Consul
Leo Gordon, Omega (North Carolina),
Vice Consul
Larry Liebross, Nu (Georgia),
Vice Consul
Steve Rich, Omega (North Carolina),
Quaestor
Michael Berlinger, Epsilon Lambda
(CCNY), Tribune
Albert J. Schiff, Omega (North Carolina),
Past Consul
Al Versacci, Epsilon Mu (Lehman),
Past Consul

“This convention far exceeded our expectations in terms of the quality educational and social experience offered. It was a winner!”

Members-at-Large elected were:

Mark Abramson, Epsilon Kappa (Tulane)
Don Anspach, Epsilon Phi (Penn State)
Rick Barrett, Tau Gamma
(Southern California)
Ed Barry, Epsilon Pi (Bradley)
Larry Baumwald, Nu (Georgia)
Ted Bradpiece, Epsilon Kappa (Tulane)
Ron Charpontier, Phi Sigma Chi
(California Poly)
Alan Goldsmith, Phi Beta (South Florida)
Jeff Gordon, Psi (Illinois)
Harris Jacobs, Nu (Georgia), Past Consul
David Lazar, Rho (Penn)
Harold Leviton, Tau Xi (Miami)
Juan Medina, Epsilon Lambda (CCNY)
Jon Seidel, Tau Alpha (Florida)
Jeff Silverbush, Epsilon Mu (Lehman)
John Smeyne, Tau Beta (Maryland)
Rick Snyderman, Tau Alpha (Florida)
William Yee, Delta (Cornell)

In keeping with the tradition established many years ago, an undergraduate Vice Consul, and four undergrad members were also elected to the Grand Council:

Howard Fish, Tau Alpha (Florida),
Undergrad Vice Consul
Kevin Cranman, Nu (Georgia)
Matt Gewirtz, Sigma Alpha Sigma
(Hofstra)
Paul Helwing, Rho Delta Rho (Illinois
Tech)

Brian Hill, Epsilon Phi (Penn State)

In a separate election, the following brothers were elected Trustees on the TEP Foundation, Inc. Board:

Dr. Arthur Joblin, Epsilon Eta (Drexel),
Vice Pres., Drexel Univ.
Eric Jonas, Tau Alpha (Florida)
Mark Kay, Epsilon Mu (Hunter)
Harold Leviton, Tau Xi (Miami)
Larry Liebross, Nu (Georgia)
Sylvan Meyer, Omega (North Carolina)
Dr. Gregory O'Brien, TAK (Lehigh),
President, Univ. of New Orleans
Howard Perlow, Tau Beta (Maryland)
Stanley Schachter, Alpha (Columbia)
Albert J. Schiff, Omega (North Carolina),
Past Consul
Jeff Silverbush, Epsilon Mu (Lehman)
John Smeyne, Tau Beta (Maryland)
Gerald Whitman, Epsilon Theta
(Queens),
Asst. to Pres., NJIT
Dr. Sheldon Grebstein, Tau Gamma
(So. California), Pres., SUNY-Purchase
S. Early Gordon, Tau Delta (Ohio St.),
Past Consul
Sanders Heller, Tau Delta (Ohio St.),
Past Consul
Harris Jacobs, Nu (Georgia), Past Consul
Seymour Weisberg, Tau Lambda (Purdue),
Past Consul
Leonard Wolf, Tau Alpha (Florida)

With the business of the Convention now concluded, the delegates and alumni awaited the final function, the Honors and Awards Banquet held in the Grand Ballroom of the hotel on Saturday evening. With wives and other guests in attendance, the brothers were overwhelmed with good food, typically outstanding TEP fellowship, and a program that will long be remembered by those in attendance.

Under the skillful guidance of Brother Stu Blumberg, Tau Alpha (Florida), the first Field Secretary of the Fraternity (1959-61), as Toastmaster, the program got underway once the dishes were cleared away. The first honoree of the evening was Brother Irving Klepper, Tau Alpha (Florida) who received a Special Golden Anniversary Commemorative Citation in thanks for his outstanding service to the Fraternity as Executive Secretary 1937-41, having accepted this position exactly 50 years ago. This citation plaque was presented by Executive Secretary Emeritus Sid Suntag who was in-

strumental bringing Brother Klepper on board as Executive Secretary in August 1937.

The next honoree was Brother Sidney Haskins, Nu (Georgia), who was presented with the Michael C. C. Lilienfeld

“Our trip to Orlando for the National Convention definitely proved that when it comes to TEP, Nobody Does it Better!”

Distinguished Alumnus Service Award in recognition of this brother's dedicated and devoted service to the Fraternity during a period spanning more than 40 years. As noted before, the Undergraduate of the Year, Paul Boni (Mu) was presented with a plaque signifying this honor together with a check representing the I. Schwartz Memorial Scholarship Award for 1987.

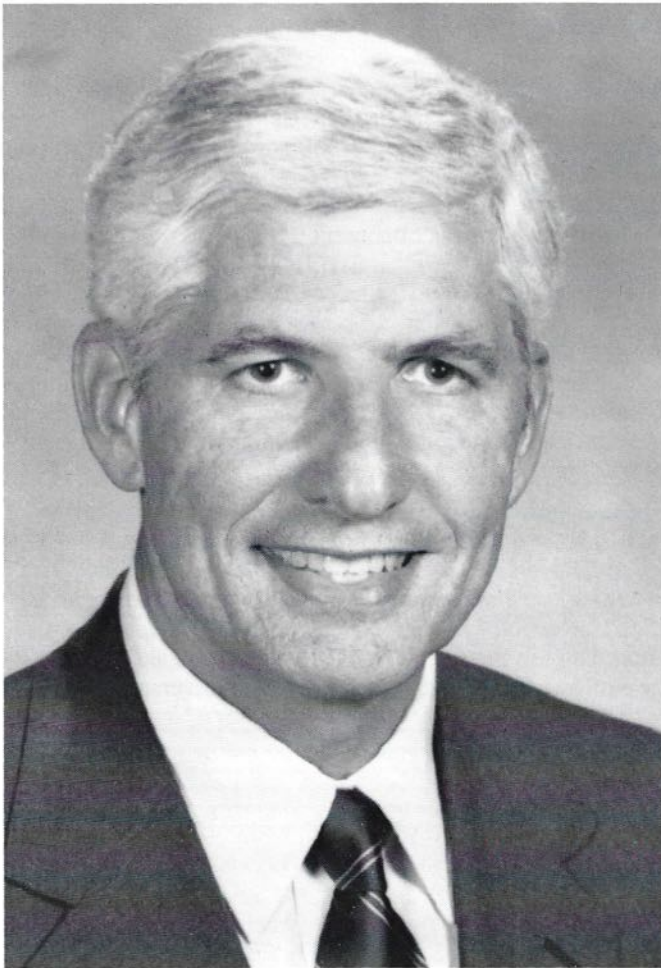
Not to be overlooked was the presentation to Brother Suntag of his portrait in oils in commemoration of his long and faithful service to the Fraternity spanning more than 50 years. This portrait is to hang in the Central Offices for all who visit the offices to see. Brother Sidney Haskins, who was chiefly responsible for its creation, made the presentation to Brother Suntag.

The feature of the evening was the presentation of the TEPman of the Year Citation by Consul Gerald Denmark to the 1987 Laureate Brother Norman H. Lipoff, Tau Alpha (Florida), in recognition of his extraordinary professional career, and his unswerving dedication to his community and the cause of World Jewry.

In the presence of his wife, family, professional associate, former Governor of the State of Florida, Reuben Askew, and the multitude at the banquet, Brother Lipoff responded with a speech that had everyone present sitting on the edge of their seats. To use the expression that it will be long remembered may be repetitious, but certainly true.

With the evening nearing its end, Toastmaster Stu Blumberg electrified the brothers with the cry “Give me a T!”, a long favorite TEP cheer. Following the banquet a dance was held with the ladies of D Phi E providing the dancing partners for the brothers. The Convention ended on such a high note that the brothers were reluctant to leave the next morning.

1987 Tau Epsilon Phi Man of the Year NORMAN LIPOFF



In choosing the "TEP Man of the Year", the National Board of Directors seeks an individual of extraordinary accomplishments: A man who has brought honor and integrity to his Fraternity, his profession, his community, and to the general public. Such a man is Norman Lipoff, truly a man of all seasons.

Initiated into Tau Epsilon Phi while a student at the University of Florida, in 1955, he subsequently served as Bursar, and later, Chancellor of his chapter. It was during his tenure as Chancellor that the chapter successfully completed plans and raised the funds to build a new chapter house. His service to the Fraternity is remembered to this day by those who attended school with him.

While at University of Florida, he was selected for the Florida Blue Key leadership Fraternity in his senior year, later serving as President of this most prestigious honor society at the University. Norman was selected for the University Hall of Fame and was an Associate Editor of the Law Review.

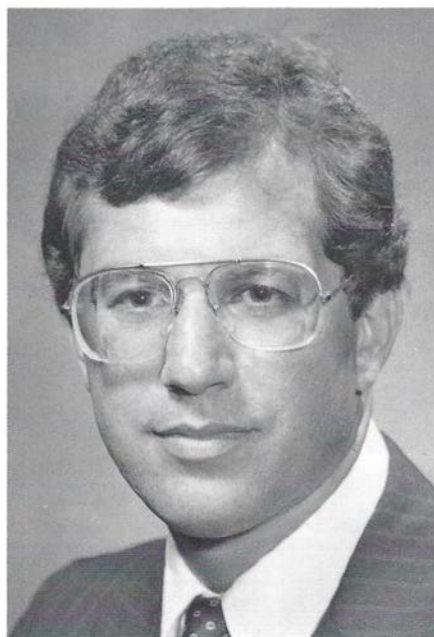
Upon graduating The University of Florida Law school, he earned his Masters of Law in Taxation at New York University. Returning to Florida, his first position was with a prestigious law firm in Tampa where he continued to escalate his career. During the eight year stay in Tampa, he served as advisor to the then fledgling Phi Beta chapter at the University of South Florida.

Moving to Miami in 1970, the young nine member Miami law firm of Greenberg, Traurig, and Hoffman was only two years old when it added the name of Lipoff. Today, Greenberg, Traurig, Askew, Hoffman, Lipoff, Rosen & Quentel has 125 attorneys, one of the largest law firms in the state. In addition to his successful practice, he has been published while lecturing extensively on subjects relating to tax law.

By combining his expertise in law and taxation, Norm has paralleled his service to both local and national charities. In 1972 he was elected to the Board of Directors of the Greater Miami Jewish Federation, later its President. In the years following he served on Federations, Councils, and as a Trustee of many organizations, including National Vice President of the United Jewish Appeal, giving time, care, and concern to people from all walks of life.

He and his lovely wife Nancy, who he met and married while attending law school are the proud parents of two beautiful daughters, Ann and Elise. His concern for his heritage, his family, his care and concern for the Miami community, and his commitment to excellence are a tribute to a TEP we can all be proud. Norman Lipoff, TEP's Man of the Year, 1987.

The Consul's Message...



Gerald A. Denmark

As many of you probably know, after many years of service Mike Ivers has resigned his post as Executive Director to pursue other business interests. We are grateful to Mike for all he accomplished and we wish him and his wife, Phyllis, future success and happiness.

I am pleased to inform you that Bob Goldman, a TEP from the University of Pennsylvania (Rho) has assumed the post of Executive Director. Bob is a Philadelphia businessman, who has moved to Atlanta. He has served as advisor to Rho Chapter and Vice-Consul of the National Fraternity. Jonathan Seidel, a graduate of the University of Florida (Tau Alpha) has been appointed Assistant Executive Director and Ron Brooks, a recent graduate of Hofstra University (Sigma Alpha Sigma) is our new Field Secretary. Ron's primary functions will be assisting Bob and Jonathan with chapter problems and in working on expansion of the Fraternity.

The fraternity system in general has been experiencing much success in recent years. Membership in fraternities and sororities appears to be at an all time high on campuses throughout the United States and Canada. The average size of our own chapters has grown tremendously over the past three years and while we have spent a great deal of time solidifying our positions

on these campuses, we are now turning our efforts to expansion. In particular, we are aiming to reactivate chapters at many colleges and universities where we have had a TEP presence. As of this writing, we have colonies at these schools: George Washington University; Queens College; Florida International University; Towson State University; Lynchberg College; Rutgers-New Brunswick; University of Michigan; University of California, Berkley; SUNY-Binghampton; SUNY-New Paltz; and SUNY-Albany.

While we are channelling much of our efforts to expand the Fraternity, we cannot do it alone. We need your help. If you know of any young men who would be interested in joining an existing TEP Chapter, reactivating a dormant chapter or beginning a new one, please advise our Executive Director, Bob Goldman, and we will do the rest. Please help us continue a great tradition.

Fraternally,

Gerald A. Denmark
Consul
Tau Epsilon Phi Fraternity

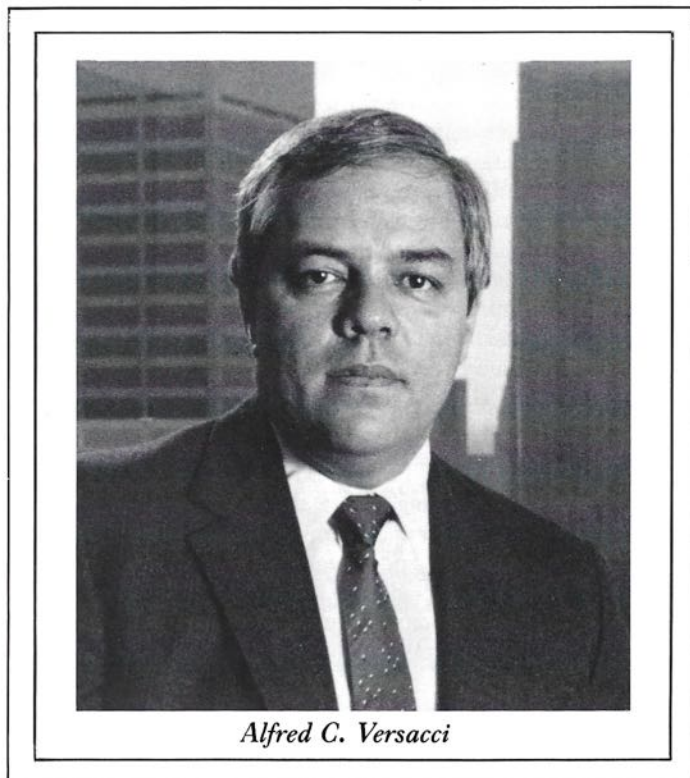
The TEP Foundation Progresses

For the past four years the TEP Foundation, Inc., which I am proud to be the President of, has burgeoned beyond my most fervent expectations. The organization has increased its scholarship aid program to worthy TEP students annually through 26 cash awards (four more than previously), and has continued its loan program for students in need.

The most prestigious scholarship granted is the I. Schwartz Memorial Undergraduate of the Year Award. This scholarship, in memory of the Founder of the Fraternity, is funded by the fraternity itself (almost all other scholarships are funded by alumni, or friends), and is granted each year to the TEP student who has been the most outstanding undergraduate in scholarship, extra-curricular activity, and fraternity service during his undergraduate career. At the convention honors and awards banquet held in Orlando this past August, Brother Paul Boni, Mu '86, was honored with the presentation of this award. All other recipients of cash scholarships were similarly honored.

Although I am particularly proud of the Foundation's record of scholarship assistance, the activity of the TEP Foundation, Inc. does not end there. During this two-year period the Foundation was instrumental in purchasing TEP's first central headquarters, a sumptuous suite of offices in the prestigious Northeast section of Atlanta. Furthermore, the Foundation sponsored the publication of the "History of Tau Epsilon Phi — 75 Years of Friendship", the 450-page monumental story of Tau Epsilon Phi and all its Chapters, which Executive Secretary Emeritus Sid Sontag wrote following his "retirement". It is indeed gratifying that this beautifully bound, magnificent volume has been so well received by alumni and undergraduate alike. The demand for copies has been phenomenal, and I hope that all interested TEPs will avail themselves of one before the supply is exhausted.

A further achievement by the Foundation during this period is the publication of the first "Geographic" in thirty years. This directory of the Fraternity membership of more than 35,000 names, addresses, and professional-business listings has been so sought after that more than 8,000 were sold even before it was

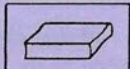


Alfred C. Versacci

published early last year. Since then many more have been distributed to TEP men across the land, but a goodly number is still available on demand. All in all, the achievement of the Foundation is most gratifying, and I look forward to even greater progress in the future.

Alfred C. Versacci
Past Consul
President, TEP Foundation, Inc.

THE TEP FOUNDATION, INC.



**BOARD OF
TRUSTEES:**
Alfred C. Versacci,
President

Donald Anspauch
Jeffrey Atlas
Barry Barish
Richard C. Barrett, Jr.
Dr. Martin H. Belsky
Michael Berlinger
David Caplan
Charles Cumello
Gerald A. Denmark
Robert S. Goldman
Leo M. Gordon
Neil Gordon

Dr. Sheldon Grebstein
Adrian Harris
Sidney Haskins
Dr. Arthur Joblin
Eric Jonas
Mark Kay
Harold Leviton
Larry Liebross
Sylvan Meyer
Dr. Gregory O'Brien
Howard Perlow
Stanley I. Schachter

Albert J. Schiff
Jeff Silverbush
John I. Smeyne
Gerald Whitman

Trustees Emeritus . . .

E. J. Evans
S. Earl Gordon
Sanders Heller
Harris Jacobs
Seymour Weisberg
Leonard Wolfe

CHAPTER HIGHLIGHTS

EPSILON ETA/DREXEL

Epsilon Eta chapter is back on track at Drexel U. in Philadelphia. Their Alumni Corporation was recently reorganized and a drive is underway to either renovate their current house or purchase a new home near campus. The brotherhood also participated this fall in assisting the University with freshman orientation, a community clean-up program, and clothes drive. Active in the Drexel Greek system, Epsilon Eta placed in this past semester's Green Week competition and has been competing in all intermural athletic leagues. The brothers have started a new tradition in weekly barbecues and have planned several group excursions to the Casinos of Atlantic City.

TAU ZETA/UNIVERSITY OF MAINE

Tau Zeta chapter has been hard at work winning any sporting event they participate in. The brothers have finished tops in football, softball and water polo already this year. Congrats also go out to the 17 new brothers initiated into Tau Zeta chapter over the past two semesters.

PHI BETA/UNIVERSITY OF SOUTH FLORIDA

For the second year in a row, the brothers of Phi Beta chapter served as staff and concessionaires for the annual St. Petersburg Grand Prix held in November. All proceeds raised by the brothers and pledges are going toward Phi Beta's housing fund with plans now underway to construct one of the first fraternity houses on USF's newly established Fraternity Row. USF/TEP also placed second overall in this past semester's Greek Week competition and won the Spirit award for the week long contest as well!

EPSILON NU/ROCHESTER INSTITUTE OF TECHNOLOGY (RIT)

Epsilon Nu chapter is on top of the Greek system at RIT. The brothers won the Greek Sports Trophy this past year yet also found time to raise money for Cystic Fibrosis during their Annual 100 Hour Teeter-Totter, for the Leukemia Society on their Annual Ski-a-thon, and for the Rochester Hillside Children's Center. Epsilon Nu has always been into

social events as well as holding theme parties for Halloween, Christmas, and a Spring Tropix party. They also held their annual TEP weekend culminating with a canoe trip for all brothers, alumni and their guests.

NU/UNIVERSITY OF GEORGIA

Nu chapter brothers returned to the UGA campus with great pride and anticipation for the upcoming year. The thought of a great pledge class in conjunction with a packed fall social calendar and Nu's Annual Sorority Stunt Night boosted the entire brotherhood's morale. A strong delegation attended the TEP National Convention this past summer which has led to an even stronger involvement by Nu brothers and alumni on the Fraternity's National level as well. Nu chapter was also honored with the Fraternity's Fein Grand Chaplin Award for philanthropic fundraising for 1987.

LAMBDA PHI EPSILON/CLARKSON UNIVERSITY

The Lambda Phi Epsilon chapter at Clarkson University is in the process of renovating their chapter house. Those extreme upstate New York winters have definitely taken their toll. The house's kitchen was totally redone last summer and work is currently being done on a new roof and extensive exterior work as well to the structure too. The brotherhood has also made their mark on the Clarkson campus as well. Several brothers were initiated into the Order of Omega Greek Honorary Society and the individuals with the two highest grade point averages from the entire Greek system are also Clarkson/TEP brothers. Congratulations are also in order to the 28 men initiated into Lambda Phi Epsilon over the past year.

EPSILON PHI/PENN STATE UNIVERSITY

After a rough 1986-87 year, Epsilon Phi chapter is back on track. The chapter's membership has steadily increased the brotherhood and has once again taken an active part in Penn State campus and Greek system programs. The brothers recently completed a service project for one of the local state parks which entailed landscaping several overgrown hiking

trails and reconstructing several of the park's buildings. The brothers have also entered teams in each of the school's intermural athletic leagues. Epsilon Phi's innovative risk management and alcohol policy saved them from near distinction when 14 other Penn State fraternities were either sanctioned or suspended due to the high levels of alcohol consumption by underage students in their chapter houses.

DELTA/CORNELL UNIVERSITY

The Delta chapters are currently planning their chapter's 75th Anniversary Celebration and Reunion. Any interested Delta brother should contact the chapter house for information. The Deltas' service program and charity fundraising resulted in two successful events this past fall, a barbecue with a local sorority and their annual TEP "Tuck-Ins." The brothers also sponsored a booth entitled "TEPmania" at Cornell's annual Fun-in-the-Sun festival. Congrats go out to TEP's oldest active chapter on their upcoming Anniversary from the National Board and Staff.

TAU ALPHA/UNIVERSITY OF FLORIDA

The Tau Alpha chapter is in the process of a three phase, major renovation of their house which has slept more than 1500 men since its doors opened in 1957. The first phase, a remodeling of the house's public areas was completed this past summer with a second phase planned for later this year. The Tau Alpha Holding Corporation was recently restructured with Brother Stuart Blumberg, '88 elected as President. The chapter also won an all-campus award this past fall for donating more pints of blood than any other organization at the University of Florida. The chapter's annual Swing-a-thon held in November raised \$1500 for the American Cancer Society.

RHO/UNIVERSITY OF PENNSYLVANIA

Since the last publication of *The Plume* many things have happened to the brothers at Rho chapter. The chapter moved into its new house located on the corner of Walnut and 38th streets in Philadelphia. The building, once an

CHAPTER HIGHLIGHTS

eyesore to the Penn campus is now the home for 37 TEP brothers and is the only "new" TEP House in the nation. The 1985 and 1987 chapter of the year has continued its excellent path and has actively taken part in all Greek functions at the University of Pennsylvania. Congratulations are also in order for Rho Brother Robert Goldman on his new position as Executive Director of Tau Epsilon Phi.

SIGMA/SYRACUSE

The Sigma chapter at Syracuse University is another TEP group which is currently undergoing major renovations to its aged fraternity house. The brothers, along with the guidance of former Executive Director Mike Ivers, secured a sizable loan in order to bring the structure up to code as well as renovate the entire front of the house and upgrade the interior furnishings, dining room and kitchen facilities. A much deserved thanks also goes out to Genesco Alumnus Jim Stoddard who has recently become the chapter's new advisor and is coordinating the house's renovations.

SIGMA ALPHA SIGMA/HOFSTRA

Sigma Alpha Sigma chapter at Hofstra University has continued on its path of excellence ever since it was recolonized in 1981. The chapter recently won first

place among Hofstra's student organizations during Homecoming for its float. Also, the chapter held its first Alumni reunion since its reformation this past year which was quite successful by all indications. The brothers are once again planning their infamous TEP Beach Party to be held this spring at Hofstra USA as well. This past summer, the entire brotherhood spent a weekend away from Long Island and New York City on a canoeing trip and retreat. Congrats are in order for Hofstra Brother Richard Leff, current Interfraternity Council President, for being awarded as Hofstra's Greek Man of the Year. Also, to Matt Gewirtz, Sigma Alpha Sigma chancellor, on being elected to TEP's Grand Council and to Brother Ron Brooks who has recently begun working for the National Fraternity as a Chapter Field Consultant.

MU/EMORY UNIVERSITY

Mu chapter raised \$2500 at its Raggae for MDA Festival this past fall. The brotherhood also had a strong showing in Emory's Greek Week. During a recently completed major house renovation project, two new rooms were added to a refinished third floor, a sundeck was built for the house, an all new fire warning system, new doors, windows, and electrical wiring were included in the project. Mu chapter also received the Kleinberger Award for Scholarship at the TEP National Convention held last August.

DELTA EPSILON/ST. THOMAS UNIVERSITY

Congratulations are in order for the Brothers of the newly chartered Delta Epsilon Chapter at St. Thomas University in North Miami, Florida. Colonized in October 1985, the group quickly grew in size and prominence among the students at St. Thomas. Although the only fraternity at the University, the brothers of Delta Epsilon have involved themselves in almost every facet of student life at their school. Brother Seth Bramson, Miami '69, has served as the group's alumni advisor and has been instrumental in the chapter's success to date as well.

During a speech to the brothers at the Chartering Banquet held November 19, Delta Epsilon Founder Brother Ken Shepard said, "There are several moments during a faternity man's lifetime when the pride he feels for his chapter and his fraternity is at its peak especially at his pledge pinning and initiation, but very few men ever have the opportunity to experience the pride and warmth of brotherhood at a chapter's chartering." Brother Shepard's challenge to his chapter brothers was, "Bottle this feeling now and forever so that when your emotions toward TEP are low, you can drink from this bottle and rekindle that spirit of brotherhood and good will toward your fraternity." Those words apply to all TEPs and were quite meaningful to those brothers in attendance at the chartering of TEPs newest chapter at St. Thomas University. Welcome aboard!

BETA DELTA/FLORIDA INTERNATIONAL UNIVERSITY

Our newest colony in the Southeast, Beta Delta Colony at Florida International University in Miami, Florida was colonized in April 1987. The new brothers of Beta Delta have already staked a claim at FIU's North Campus under the guidance of four TEP men who had transferred to the school from the University of South Florida, the University of Florida and Tulane University. Beta Delta is eager to assist any alumni interested in reactivating the South Florida Alumni Association of Tau Epsilon Phi along with TEP's newest chapter Delta Epsilon at St. Thomas University in North Miami.

ALUMNI INFORMATION FORM

Name _____ Chapter _____

Address _____

City, State _____ Zip _____

Present occupation _____

Married? _____

Children, if any? _____

Any other news of note: _____

The Scholarship Awards of the TEP Foundation

The **ARNOLD COHN MEMORIAL AWARD** established in 1969 through contributions from Brother Cohn's family and friends is awarded annually to a student who has excelled in scholarship, extracurricular activity and fraternity service. Preference is given to applicants from Ohio State University.

The **FRANK CONSTANGY AWARD** established in 1972 by the Trustees is to honor a student from the State of Georgia who has excelled in scholarship, campus activity and fraternity service.

The **SARA AND E. J. EVANS AWARD** established in 1974 by the Trustees is presented each year to a student whose undergraduate career has been marked with outstanding achievement in scholarship, campus and civic activity and fraternity service.

The **JOSEPH FORD MEMORIAL SCHOLARSHIP** established in 1968 with a contribution from Brother Ford in 1967 is awarded annually to honor a student attending a college or university in New England who has demonstrated outstanding scholarship, extracurricular activity and fraternity service.

The **SAMUEL J. LEFRAK SCHOLARSHIP** established and funded by the Trustees in 1976 to recognize Brother Lefrak's outstanding business, civic and charitable achievements is granted annually to a student who has excelled in scholarship, campus activity and fraternity service while pursuing a technical course of study.

The **S. CHARLES LERNER MEMORIAL AWARD** established and funded with a contribution from Mrs. Lerner in 1976 is to honor and reward a student at Cornell University whose record of achievement in scholarship, fraternity service and other campus activities are worthy of recognition.

The **GOVERNOR MARVIN MANDEL AWARD** established in 1973 by the Trustees is awarded annually to a Maryland student who has performed outstandingly in scholarship, extracurricular activity and fraternity service.

The **LOUIS L. MANES LEADERSHIP AWARD** established in 1964 with a gift from Brother Manes is awarded annually to a prominent undergraduate scholar and leader.

The **ARTHUR OCH'S JR. MEMORIAL AWARD** established by the Trustees in 1968 is to honor the student who best exemplifies Brother Och's devotion to service while maintaining a high standard of academic effort.

The **A. HAROLD FROST SCHOLARSHIP** established in 1965 with funds donated by Brother Frost is awarded each year to a student pursuing a pre-law degree who has excelled in scholarship, fraternity service and extracurricular activities.

The **ELLIOTT GARBER MEMORIAL AWARD** established in 1968 by memorial contributions is presented each year to a Georgia student who has compiled an outstanding record of achievement in scholarship, extracurricular activities and fraternity service.

The **I. HEIMAN SCHOLARSHIP AWARD** established in 1975 by the Trustees in memory of this Past Consul and founder of Nu Chapter and the Scholarship and Student Aid

Fund, Inc. is awarded annually to a student who has excelled in scholarship, extracurricular activity and fraternity service.

The **JACK A. KING MEMORIAL SCHOLARSHIP** established in 1980 with a bequest from Brother King is awarded annually to reward "outstanding scholarship and campus leadership."

The **LEO SCHLOSBERG MEMORIAL AWARD** established in 1969 by the Trustees is awarded annually to honor an undergraduate who has excelled in scholarship, extracurricular activity and fraternity service.

The **LEON SCHNEIDER MEMORIAL SCHOLARSHIP** established in 1972 with contributions from Brother Schneider's family and friends is to honor a student in North Carolina who has excelled in academics, extracurricular activity and fraternity service.

The **DOC I. SCHWARTZ MEMORIAL SCHOLARSHIP**, the TEP Undergraduate of the Year. The top award available. The scholarship was established in 1964 to honor "Doc" Schwartz, Alpha 1, awarded annually to the outstanding TEP undergraduate.

The **SOL SHAMAN AWARD** established in 1976 with memorial contributions is presented each year to a student who has achieved outstanding success in scholarship, extracurricular activity and fraternity service during his undergraduate career.

The **JOSEPH SUNTAG MEMORIAL SCHOLARSHIP** established in 1974 on the passing of Brother Sidney Suntag's father is awarded to a student who has excelled in scholarship and fraternity service.

The **LEONARD WOLF AWARD** established with a gift from Brother Wolf in 1971 is the annual award made to a student who has excelled above all others in the State of Florida in all facets of academic life.

The **MICHAEL D. FALK AWARD** was established by Brother Isadore Falk in 1983, in memory of his son, and is awarded to the outstanding student who best exemplifies Michael's outstanding devotion to Scholarship, Fraternity, and Service while a student.

The **JEROME AND IRVING LIEBROSS DENTAL AWARD** honors a TEP who displays the scholarship and need for assistance to attend Dental School. A gift presented by Brother Larry Liebross honoring his father and uncle; it is awarded alternate years, coinciding with the biennial Convention.

The **PERLOW BROTHERS AWARD**, a gift of Brother Howard Perlow, is presented to a member of Tau Beta Chapter at the University of Maryland who has displayed an outstanding record of scholastic achievement while fulfilling the part of our National Creed which asks each member to serve for the love of service.

The **DANIEL COMM SCHOLARSHIP**, named for its sponsor is presented to an outstanding student in the field of architecture who has distinguished himself in that course of study while contributing honor and service to his university and community.

The **HAROLD LEVITON LEADERSHIP AWARD** is given to a student pursuing a degree in science of engineering who has compiled an outstanding record in academics, fraternity service, and community affairs. Established by Brother Harold Leviton, is awarded to the student who displays dynamic leadership in all facets in his college life.

The **SIDNEY S. SUNTAG SCHOLARSHIP** was established by the Trustees in honor of our esteemed and loved Executive Director Emeritus, and is given annually to a graduate who displays outstanding leadership and organizational qualities who wishes to pursue his graduate studies program at a University that has an existing TEP Chapter or colony. Working with the group, he will apply his skills and knowledge of Fraternity affairs to strengthen their membership.

The **I. "DOC" SCHWARTZ UNDERGRADUATE OF THE YEAR**, is funded by the Foundation, and is named in honor of Alpha #1, our first founding father, Brother "Doc"

Schwartz. It is awarded annually to the Fraternity's outstanding undergraduate. This prestigious award is given annually to the man, who in the eyes of the Scholarship Committee, best exemplifies the spirit of the philosophy and creed as first envisioned in 1910 by the founding fathers of the Fraternity.

[These last two awards are the most treasured of all the Scholarships of the Foundation. Historically, recipients of these two scholarships have usually served future terms of distinction and honor on both the Board of Directors of the TEP Foundation, and the Grand Council of the National Fraternity].

The TEP Foundation is the Tax-Exempt Student Aid and Scholarship Fund of the National Fraternity. Funding for these Scholarships come from Alumni and Friends who have endowed Scholarships in the Name of outstanding Fraternity men and Citizens. It is their way of eternal dedication to the young undergraduates of our Nation. It is hoped that some day you will endow a Scholarship of Merit, or Contribute to the TEP Foundation.

The New Executive Committee of the Foundation

Unlike the procedure for election of officers of the Grand Council, it is the Trustees of the TEP Foundation, Inc. who elect their own officers at their first meeting following their installation at the Convention. Thus it was that on October 1987, in the Hyatt Long Island Hotel, the Trustees chose its new Executive Committee to serve for the next two years.

Not surprisingly, Brother Al Versacci, Epsilon Mu (Hunter-Lehman), was re-elected to the Presidency for the third time — a tribute to the outstanding job he has done for the organization for the past four years. His other Fraternity and busi-

ness accomplishments are detailed elsewhere in this issue of *The Plume*.

As Vice President of the Foundation, the Trustees chose Brother Albert (Bud) Schiff, Omega (North Carolina), who had previously served as Consul of the Fraternity 1983-85. His persona vitae is detailed as ex officio member of the Executive Committee of the Grand Council.

Two newcomers were elected as Secretary and Treasurer of the Foundation. Brother Eric Elias, Tau Alpha (Florida), takes over the chores as Secretary after a lapse of some years of activity in TEP National affairs. He had previously served as

Regional Governor of the New York area with distinction. He is a successful insurance executive in his native New York City.

Brother Mark Kay, Epsilon Mu (Lehman), is the new Treasurer of the Foundation. As Vice President of the Morgan Guaranty Bank of New York, he will be of extraordinary assistance in the financial affairs of the Foundation. He is a former Chancellor of his Chapter, and served briefly as Regional Governor in his native City of New York.

Some Thoughts for the Future . . .

For years TEP called on its alumni for contributions to the Fraternity-at-Large to support ongoing programs on behalf of its undergraduates. More recently, since the TEP Foundation, Inc. came into being, alumni have been asked to support scholarship and loan programs to assist worthy and needy undergraduates. Both of these programs have been intended to assist the present undergraduate body and for the most part they have increased.

Now in order to insure the future well being of the Fraternity in the decades to come, we ask your indulgence to consider mentioning the TEP Foundation, Inc. in your last will and testament. Aside from

giving much needed support in the future it will serve as a significant reminder in Perpetuity of your generosity and will serve as a living memorial to you or others you name. Aside from every other consideration, outright bequests to the TEP Foundation, Inc. are deductible from the donor's taxable estate for federal estate tax purposes at the fair market value, and without limit.

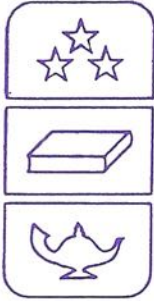
The following are some forms of bequests for your consideration:

1. **Specific bequest** — Wherein you devise a named property such as a residence or other real estate.

2. **General bequest** — giving and devising in your will a specific sum of

money, or a portion of the remaining assets of your estate to the TEP Foundation, Inc. to it naming The TEP Foundation, Inc. as a beneficiary of a portion of your estate. It would be most helpful if you would send a copy of your bequest to the Central Office.

You may, at your discretion, provide for the future of the TEP Foundation, Inc. in yet another generous manner, by assigning an existing life insurance policy to the Foundation. When the Foundation becomes the owner of such policy, you are entitled to a charitable contribution income tax deduction approximately equal to the cash surrender value of the policy.



The Awards and Honors of The TEP Foundation

*Congratulations to the following young men for being awarded
TEP Foundation Scholarships this past year.*

Harold I. Leviton Award
Mark Hirsch of The University of Pennsylvania

• • •

The Michael Falk Scholarship
Frederick Brody of The University of North Carolina

• • •

Isadore Heiman Memorial Award
John Benner of Pennsylvania State University

• • •

The Sol Shaman Honors Award
George Clay III of Marietta (Ohio) College

• • •

The Sara & E. J. Evans Award
Scott Hershinow of The University of Illinois

• • •

The Jack A. King Memorial Scholarship
Anthony Pearman of Virginia
Commonwealth University

• • •

A. Harold Frost Award
Rodney Mazure of The University of Illinois

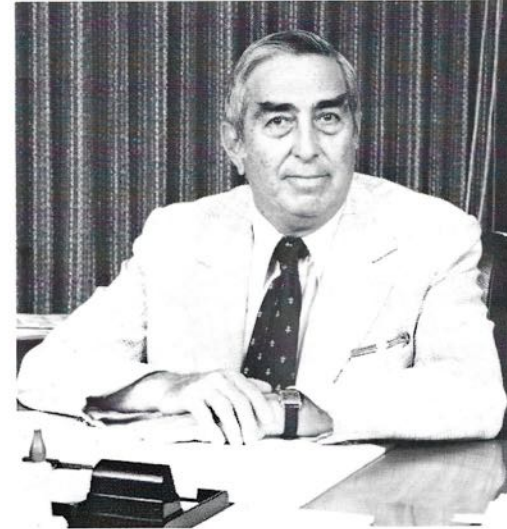
• • •

The Perlow Brothers Scholarship
Steven Vinnick of The University of Maryland

• • •

The Seymour "Sy" Ross Award
Wayne Langhurt of The University of Pennsylvania

• • •



Brother Irving Klepper

The Louis L. Manes Leadership Award
Barry Zuckerman of The University of Maryland

• • •

The Sidney Suntag Scholar
Jeffrey Gordon of The University of Illinois

• • •

The I. "Doc" Schwartz Memorial Award
The Undergraduate of the Year
Paul Boni of Emory University

Alumni Awards:

TEP Man of the Year — Norman Lipoff,
Tau Alpha chapter

Michael C. C. Lilienfeld Award — Sidney Haskins,
Nu chapter

Special Commemorative Award — Irving Klepper,
Tau Alpha chapter; For 50 years of service to the Fraternity

INTERESTED IN TEP FOUNDATION — SCHOLARSHIPS AND AWARDS? —

Yes! Please Send Me Information on How to Apply.

NAME: _____

CHAPTER: _____ CLASS YEAR: _____

ADDRESS: _____

_____ ZIP _____

PLEASE RETURN TO: The TEP Foundation
3088 Mercer University Drive, Suite 200
Atlanta, Georgia 30341
Attn: Scholarship Committee

National Fraternity Awards . . .

CHAPTER AWARDS:

The Irving Golumbe Chapter of Merit
Award — RIT First Runner Up, Illinois

The Driesen Chapter Efficiency Award
— Clarkson

The Kleinberger Scholarship Award —
Emory

The Alumni Chapter Publications
Award — Tulane

The Fein Grand Chaplain Award —
Georgia

The LeFrak Campus Achievement
Award — Hofstra

The Lebethal Chapter Improvement
Award — Tulane, Bryant, Cornell

Colony Highlights...

Tau Epsilon Phi is very proud of those men who aspire to revive chapters in our Fraternity that have become dormant over the years. Currently, there are 11 existing TEP colonies at colleges and universities in Florida, Virginia, Washington, D.C., New Jersey, New York, Maryland, Michigan and California. These fine young men comprise the following Colonies of Tau Epsilon Phi:

Gamma Sigma	— Rutgers University, New Brunswick
Chi	— University of Michigan
Beta Delta	— Florida International University
Tau Sigma Upsilon	— Towson State University
Tau Theta	— George Washington University
Alpha Sigma	— SUNY, Albany
Delta Chi	— Lynchburg College
Epsilon Zeta	— University of California, Berkeley
Phi Pi	— SUNY, Binghamton
Tau Eta Epsilon	— SUNY, New Paltz
Epsilon Theta	— Queens College

Although considered new colonies, each one of these groups is at a school where a chapter of Tau Epsilon Phi previously existed. At the present time, several of these colonies are preparing to petition the Grand Council for recognition as an official chapter in our Fraternity. The newest colonies: Cal-Berkley, SUNY-Binghamton, SUNY-New Paltz, Rutgers-New Brunswick and Queens College were all colonized this past fall. The members of these TEP Colonies are eager to re-establish contact with those brothers who were initiated into their chapters prior to their closing. Any brother who wishes information on the current status of their chapter is encouraged to contact the National Fraternity office at (404) 454-8377.

Chapter Highlights (continued from page 11)

GAMMA SIGMA/ RUTGERS-NEW BRUNSWICK

October 28, 1987. This date is going to hold a very special place in the lives of 25 young men at Rutgers-New Brunswick. On that date, the Gamma Sigma Colony of Tau Epsilon Phi was recolonized at Rutgers University. With strong support from TEP National, it appears as though these fine men are well on their way to forming a successful chapter. In the first stages of their colonization process, the men of Gamma Sigma are preparing for initiation. Their officers have already been elected and they are working on fulfilling the requirements necessary to become brothers. These requirements include writing a constitution, preparing a budget and educating themselves about Tau Epsilon Phi. Already the colony has held several functions including a food drive for the needy in New Brunswick, NJ and a trip to meet the brothers of Rho Chapter at the University of Pennsylvania. By all indications, the Gamma Sigma colony is off to a roaring start.

FLASH...

Just prior to the publication of this edition of *The Plume*, the editor was notified of the recent recolonization of the Tau XI Chapter at the University of Miami and the Kappa Chapter at the University of Vermont. Welcome Back!!



TEP's new colony at University of California at Berkeley.

ALUMNI NEWS

Alumni News and Notes Column To Be Resumed

Oldtimers will recall that one of the most avidly read columns in the old issues of *The Plume* was the one dealing with individual alumni news. As much as a full page in each issue of *The Plume* was devoted to news of alumni, their jobs, families, and accomplishments. It can be safely said that to most alumni this was the feature that they looked forward to more than any other *Plume* attraction. We plan on reactivating this column in all forthcoming issues of the magazine with your help. *Contained below is a questionnaire which we urge you to fill out and return to the Central Office at your convenience. Please use the postage free envelope that is attached in the center of the magazine.*

To kick off this important feature of the *Plume* we have listed a few items that have come to our attention. We have every expectation that the next issue will have many more items of interest, including yours.

Brother Dick Stockton, Sigma (Syracuse) '64, is a mainstay on television, covering basketball for CBS Sports.

Brother J. Gerald Sugarman, Theta (Boston) '52, is a Producer, Editor for CBS News. He's living in Tappan, NY.

Brother Charles Lipson, Tau Mu (U. Conn.) '67, has a new position as Vice President Administration, Home Capital Services, Inc., a division of Home Insurance Company, after many years with Colgate Palmolive Company, most recently as Division Vice President & CEO.

Brother Gregory O'Brien, Tau Alpha Kappa (Lehigh) '68, Trustee on the TEP Foundation, Inc. Board, was named President of the University of New Orleans this past fall. He had previously served as Vice President and Provost of the University of South Florida, and Advisor to Phi Beta Chapter there.

Brother Mark L. Kay, Epsilon Mu (Hunter Lehman) '71, Trustee on the TEP Foundation Board, is now Vice President of the Morgan Guarantee and Trust Company.

Brother Sheldon Grebstein, Tau Gamma (Southern Cal.) '49, a Trustee on the TEP Foundation Board, is the President of the State University of New York

at Purchase. Previously he was President of the SUNY-Binghamton University.

Brother Adrian Harris, Rho Delta Rho (I.I.T.) '54, is Vice Chancellor of the University of California Los Angeles.

Brother Ed Epstein, Rho (Penn) '58, is Chairman of the Berkeley Academic Senate and Professor of Business at the University of California Berkeley.

Brother Jonathan Kaplan, Phi Mu '68, Founder of his Chapter at the University of Hartford, has been elevated to the Superior Court of the State of Connecticut.

Brother Andrew Henschel, Tau Alpha (Florida) '84, is now a member of Kings County (New York) District Attorney Staff.

Brother Ken Shepard, Delta Epsilon, Founder of his Chapter at St. Thomas University (Miami), is General Manager of the Geneva (NY) Cubs Baseball team. He is the youngest general manager of a team in professional baseball.



Brother Alan Levy, Alpha (Columbia) '49, is a noted sports physician and currently Team Doctor to the New York Giants Football Team.

Brother Irving R. Kaufman, Epsilon (Fordham) '29, on retiring from the Federal Court Bench where he served as Chief Justice of the Circuit Court of Appeals, was presented with the Presidential Medal of Freedom, the nation's highest civilian award, in appreciation for more than 50 years of service.

Brother Howard Greenstein, Delta (Cornell) '57, Senior Rabbi of the largest congregation in Jacksonville, Florida,

was awarded a Doctor of Divinity Degree, Honoris Causa, at Hebrew Union College on the 25th anniversary of his ordination.



Brother Samuel J. LeFrak, Tau Beta (Maryland) '40, noted builder and developer, was honored recently by having the new Amherst College Gymnasium named "The Samuel J. LeFrak Gymnasium".

Brother Paul Katz, Kappa Delta (Monmouth) '70, is the new Chief Auditor for the State of New Jersey.

Brother Albert J. "Bud" Schiff, Omega (U.N.C) '64, Past Consul, is the Vice President and Chief Executive Officer of Mutual of New York (MONY) Insurance Company.

Brother Alfred C. Versacci, Epsilon Mu (Hunter-Lehman) '65, Past Consul and current President of the TEP Foundation, Inc., was recently elevated to the Vice-Presidency of the Amerada Hess Corp.

Brother Al Povich, Tau Zeta (Maine) '46, is the Sports Editor of the *Washington Post*, and **Michael Trilling**, Alpha Beta (American) '63, is Assistant Sports Editor on that famous newspaper.

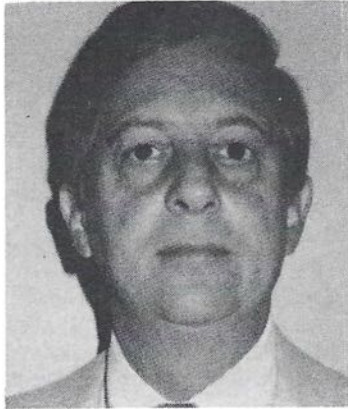
Brother Allan Sacks, Alpha Omega (Baruch) '66, is Chief of the Law Division of the Federal Communication Commission, while **Brother Stephen L. Goodman**, Epsilon Iota (R.P.I.) '77, is Deputy Chief of the Commission.

Brother Gerald Whitman, Epsilon Theta (Queens) '62, Trustee on the TEP Foundation Board, is Assistant to the President of New Jersey Institute of Technology.



ALUMNI NEWS

Brother Sam Proctor, Tau Alpha (Florida) '38, Chief of the History Department at the University, has recently published the history of the University, titled "Gator History", to great acclaim.



Brother John Smeyne, Tau Beta (Maryland) '59, member of the Grand Council, was recently elected President of the Gift Association of America, the largest and oldest gift association in the industry.

TEPman of the Year Lipoff Establishes Scholarship

Shortly after the Convention where he was honored as TEPman of the Year 1987, Brother Norman H. Lipoff, Tau Alpha (Florida), announced his funding of a scholarship under the auspices of the TEP Foundation, Inc. This scholarship will be known as the Norman H. Lipoff Scholar. Details of the criteria have not

yet been finalized. As soon as they are, all Chapters will be notified so that worthy undergraduate brothers can petition for consideration at the appropriate time.

TEP Hall of Fame Adopted

Now that the Fraternity has passed the third quarter of a century in its history, it has become apparent that many of the thousands of our alumni who have passed through the Portals deserve to be recognized in a unique way. With this in mind, the Grand Council has adopted a program to be called "THE TEP HALL OF FAME" wherein alumni, past and present, who have brought honor to themselves, and in an indirect way to the Fraternity, by achieving success in their professional, civic, business, academic, or other careers. Also honored by elevation into the "Hall of Fame" will be the many alumni past and present who have contributed extraordinary service on behalf of the National Fraternity and/or any one or more of its Chapters.

The Committee in charge of this program has already compiled a meaningful list of alumni in both of the above categories for admission into the Hall of Fame, but undoubtedly it is not complete. We are certain that there must be many others who we are unaware of, who deserve to become members of the Hall of Fame as well.

We, therefore, ask you to help us to augment the list we already have by nom-

inating yourself, if you feel that you merit the honor, or by proposing an alumnus of your acquaintance whose career deserves consideration for inclusion in the Hall of Fame. Please fill out the questionnaire below and return it to this office at your earliest convenience in the postage-paid envelope that you will find elsewhere in the magazine.

Chapter Eternal

*"To Hold Eternally Before Us
The Memory of Those
We Have Loved and Lost"*

Since the last issue of *The Plume*, we have learned that the following Brothers have passed into Chapter Eternal:

Frederic R. Mann, Rho (Penn), past 3 terms (1928, '29, '47) Consul

Aaron Davis, Tau Alpha (Florida)

Judge Charles Henchel, Epsilon (Fordham)

Norman Feldman, Rho (Penn), former Endowment Fund Trustee

Dr. Melville Humbert, Alpha (Columbia)

Howard Simon, Delta (Cornell), former G.C. member

Maurice A. Ross, Tau Delta (Ohio State), Chapter Founder

To: The TEP Hall of Fame Committee of the Grand Council

I hereby nominate Brother _____ of _____ chapter for admission into the TEP Hall of Fame. His credentials for consideration are as follows:

(Use extra sheet if necessary)

Chapter _____

Signed _____

TEP NOSTALGIA

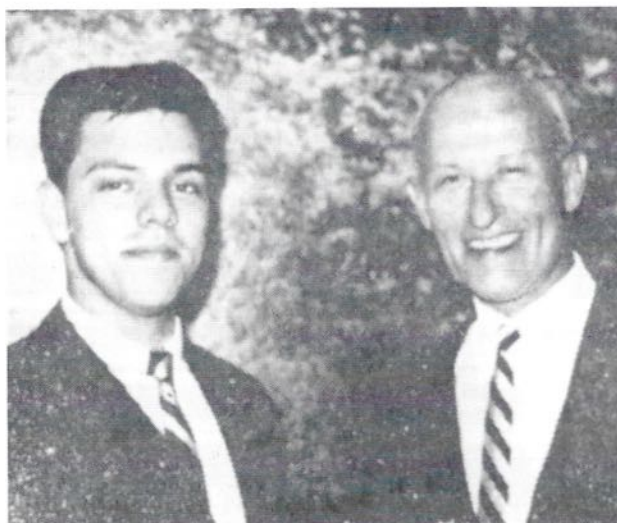


Epsilon Phi (Penn State) Chapter as it appeared in 1963.

The 63rd Biennial Convention was held in the brand new Carillon Hotel on Miami Beach chaired by Brother Aaron Kanner, one of the founders of the Tau Alpha (Florida) chapter.

At this same convention, Brother Marvin Mandell, Tau Beta (Maryland) was designated TEPman of the Year, the first of two such honors received by this illustrious brother.

Also, of particular note, Brother E. J. "Mutt" Evans, Omega (North Carolina), was elected Consul after serving the fraternity for more than 40 years.



Famed Al Versacci, Past Consul and current President of the TEP Foundation, Inc. with then Executive Secretary Sid Suntag in 1963.



Brother Aaron Tanner, Tau Alpha (Florida) who chaired the 1983 Convention in Miami Beach.

TEP NOSTALGIA

Just 25 Years Ago...

*Four Chapters were added to the Fraternity's roster:
Epsilon Omicron at Pratt Institute*

*Delta Tau at Detroit Institute of Technology
Epsilon Phi at Penn State University
Alpha Kappa at Adelphi University*



A montage of chapter life 1963.

WELCOME ABOARD

Introducing the New Grand Council Executive Committee

For the first time in recent history an entire Executive Committee of the Grand Council was returned to office by the Orlando Convention (Grand Chapter). This extraordinary reelection came about as a result of the undergraduate and alumni delegates coming to the conclusion, after considerable thought, that the Fraternity could be best served if the extremely successful team was to serve for an additional term of two years.

Once more heading the Fraternity is Brother Gerald Denmark, Phi Lambda (L.I.U.), later transferring to Sigma Alpha Sigma at Hofstra University, where he continued his undergraduate activity. Following his graduation from law school, he entered the practice of law in Pittsfield, Massachusetts. In the comparatively short time he has resided in this western Massachusetts city he has become an outstanding civic and religious leader of the community. It is interesting to note that Brother Jerry, as he is better known, began his national TEP service while still an undergraduate by helping out with clerical chores in the TEP National Headquarters almost 30 years ago. He literally started at the bottom!

The three Vice Consuls in no special order were all returned to office:

Leo Gordon, Omega (North Carolina), the youngest member of the Executive Committee, is a native New Jerseyite and former Undergraduate of the Year (1973). He is an attorney with the U.S. Customs Service.

Robert Goldman, Rho (Penn), is a Philadelphia businessman, and chiefly responsible for the reactivation of Rho Chapter. He subsequently resigned as Vice Consul to replace Brother Mike Ivers as Executive Director. To replace Brother Goldman as Vice Consul, Brother Stuart Blumberg, Tau Alpha (Florida), was appointed to fill out his unexpired term. Brother Blumberg, a former Field Secretary (1958-1960), is a hotel and real estate executive in Miami Beach, and is currently President-Elect of the Miami Beach Chamber of Commerce. For those who have read the History of Tau Epsilon Phi, Brother Blumberg will long be remembered as the famous "One Suit Stu".

Mike Berlinger, Epsilon Lambda (CCNY), a native New Yorker, was reelected Tribune of the Fraternity. A teacher in the N.Y.C. Brother Berlinger is also in the real estate business. His fraternity service includes being advisor to his chapter and service as Grand Chancellor of the 1983 Convention on board the S.S. Viendam.

Also reelected was Brother Steve Rich, Omega (North Carolina), as Quaestor (National Treasurer) of the Fraternity. Brother Rich, an Atlanta native, continues to bring a world of financial know-how to the TEP National scene based on his extraordinary experience as a Controller for Coca-Cola USA.

Last but not least, two Past Consuls were elected Ex Officio to the Committee. By virtue of his being President of the TEP Foundation, Inc., Brother Al Versacci, Epsilon Mu (Hunter-Lehman), was one of the two elevated. Brother Versacci really needs no introduction as few alumni in recent times have had such important impact on the TEP National. Nevertheless, it is important to recall that he was Undergraduate of the Year (1965), Assistant Executive Secretary (1967-68), Consul of the Fraternity (1983-85), and has been President of the Foundation since 1985 when his term as Consul expired. His business life is equally successful, as he is Vice President of Amerada Hess Corp.

The second Past Consul to be similarly honored as ex officio member of the Executive Committee, was Brother Albert "Bud" Schiff, Omega (North Carolina), who succeeded Brother Versacci as Consul of the Fraternity in 1985 and is the current immediate past Consul. Brother Schiff, too, needs no introduction as by virtue of his long service to the Fraternity which culminated in his being elected Consul in 1985, he is well known to the Fraternity-at-Large. He, as well, brings a world of business acumen to the deliberations of the Executive Committee as he is currently Chief Executive Officer of Mutual of New York (MONY) Insurance Company.



Seidel Named Assistant Executive Director

As part of the general reorganization of the Central Offices of the Fraternity, Brother Jonathan M. Seidel, Tau Alpha (Florida), '86, has been appointed Assistant Executive Director of the Fraternity. Brother Seidel is no stranger to the workings of the TEP National Headquarters as he served as Director of Chapter Services following his graduation from college. While at college, he served his Chapter with distinction, leading to his election as Chancellor during Tau Alpha's 60th year. Jon was elected to the Fraternity's Grand Council as an Undergraduate Member-at-Large and has continued to serve the National Fraternity ever since. He is a native of Atlanta and has long been active in various community organizations in addition to his service to Tau Epsilon Phi.

It is interesting to note that Brother Seidel is the first Assistant Executive Director since Brother Al Versacci held that post in 1967.

Welcome Aboard...

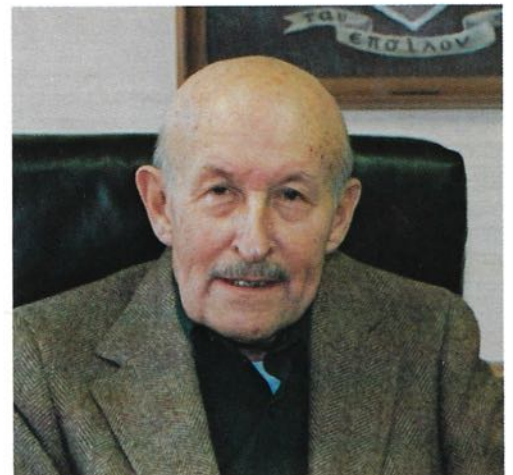
Brother Ronald Brooks, a graduate of Sigma Alpha Sigma chapter at Hofstra University is our newest Field Consultant for the National Fraternity. Ron will be visiting chapters throughout the country during 1988-89. Brother Brooks was initiated into Tau Epsilon Phi in November 1983 and has served his chapter as a chairman and officer since then. And, Ron was presented the Meritorious Service Award by his chapter upon graduation where he earned his BBA in International Business. A native of New York, he has grown up in Manhattan and currently resides in Westchester County, NY.



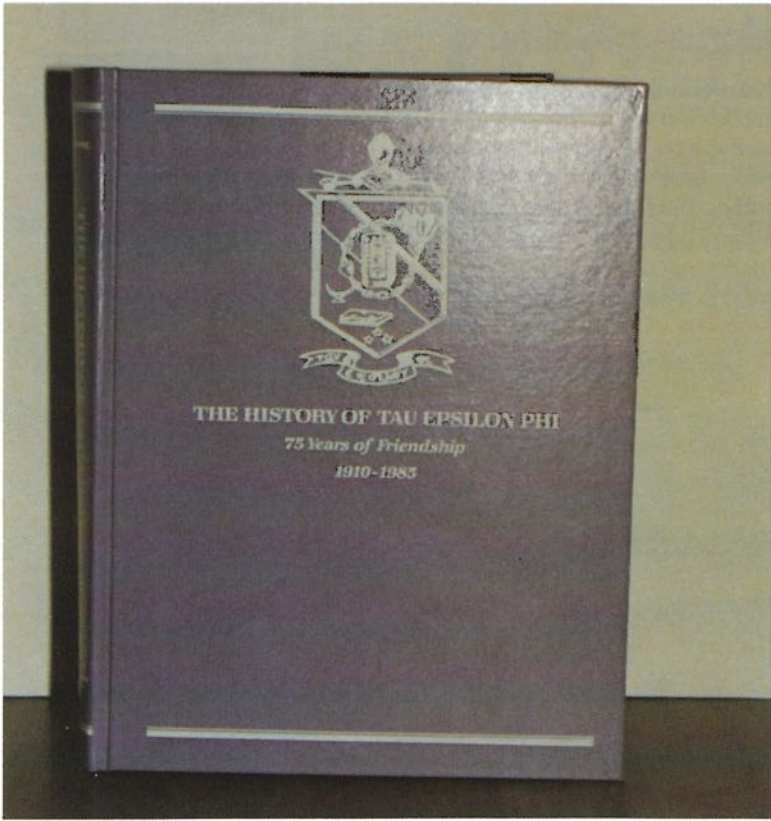
Rho/University of Pennsylvania brothers in front of their new chapter house on Walnut Street in Philadelphia.



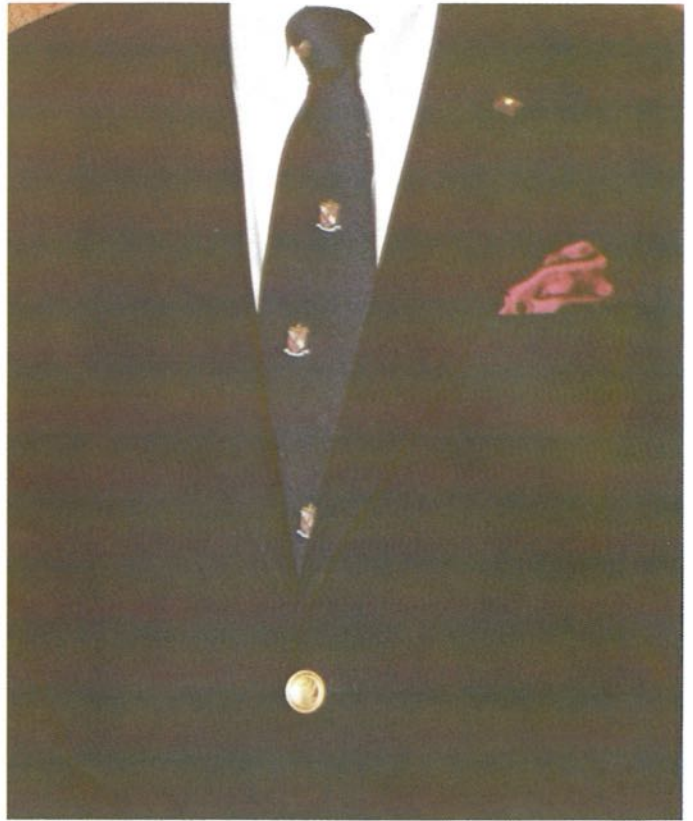
Rho Delta Rho brothers at The Illinois Institute of Technology.



Sidney S. Suntag, TEP's Bald Eagle.



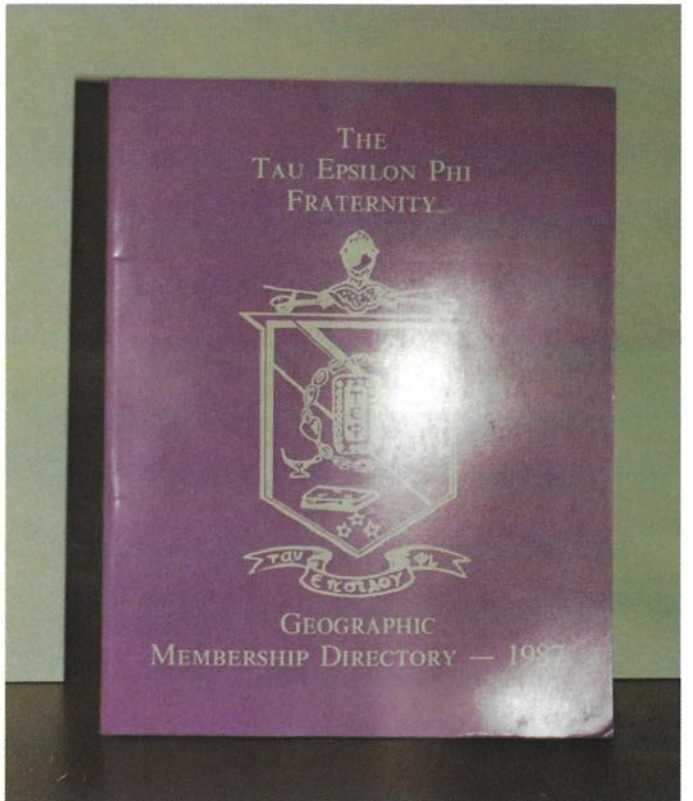
History of Tau Epsilon Phi



New Crest Tie



Cups & Mugs



Geographic

Tau Epsilon Phi

PRICE LIST 1987

BOOKS

- 75 Year History \$31.95
- Geographic 15.00

MUGS & CUPS

- Ceramic Mug 8.50
- Coffee Mug 3.50
- Plastic Cups
- “Nobody Does it Better” 1.25/6
- 9.00/50

PINS & DECALS

- Jeweled Pin 36.00
- Recognition Pin 6.75
- “Nobody Does it Better”20*
- Crest Decal35*
- I Love TEP10*
- “Nobody Does it Better”10*

MISCELLANEOUS

- Flags 60.00
- Robes 13.00
- Collared Knit Shirt 15.00
- Convention Tee-Shirts 5.00
- Visor 3.50
- Clear Picture Frame 2.00
- New Crest Neck Tie 15.00

All prices subject to change.

*Price per item with minimum order of 50.



Jewelry

ORDER YOUR TAU EPSILON PHI BOOKS AND GIFTS

Name: _____

Address: _____

_____ Zip _____

Item(s): _____ Quantity: _____

Make checks payable to: **Tau Epsilon Phi Fraternity**
200/3088 Mercer University Drive, Atlanta, GA 30341

TAU EPSILON PHI

DIRECTORY

THE TAU EPSILON PHI National Fraternity

Founded at Columbia University on October 19, 1910.

THE GRAND COUNCIL OF TAU EPSILON PHI

Executive Committee

Gerald A. Denmark, Consul
Steven A. Rich, Vice-Consul
Leo M. Gordon, Vice-Consul
Stuart Blumberg, Vice-Consul
Lawrence Leibross, Vice-Consul
Michael Berlinger, Tribune
Albert J. Schiff, Past Consul
Alfred C. Versacci, Past Consul

Members-at-Large

Mark Abramson	Juan Medina
Donald Anspauch	Ron Charpentier
Rick Barrett	Jeff Silverbush
Larry Baumwald	John Smeyne
Alan Goldsmith	Rick Snyderman
Jeffrey Gordon	David Lazar
Harris Jacobs	Edward Barry
William Yee	Ted Bradpiece
Harold Leviton	

Undergraduate Members

Howard Fish, Vice-Consul	Brian Hill
Kevin Cranman	Paul Helwing
Matt Gewirtz	

National Headquarters Staff

Robert S. Goldman, Executive Director
Jonathan M. Seidel, Asst. Exec. Director & Editor
Grace Jenkins, Comptroller & Office Manager
Ronald V. Brooks, Director of Chapter Services
Sidney S. Suntag, Exec. Secretary Emeritus and Director of Alumni Affairs

THE TEP FOUNDATION, INC.

formerly the Tau Epsilon Phi Educational Endowment Fund

Alfred C. Versacci, President
Mark S. Kay, Treasurer
Eric Jonas, Secretary

Board of Trustees

Donald Anspauch	Adrian Harris
Jeffrey Atlas	Sidney Haskins
Barry Barish	Dr. Arthur Joblin
Richard C. Barrett, Jr.	Harold Leviton
Dr. Martin H. Belsky	Larry Leibross
Michael Berlinger	Sylvan Meyer
David Caplan	Dr. Gregory O'Brien
Charles Cumello	Howard Perlow
Gerald A. Denmark	Stanley I. Schachter
Leo M. Gordon	Albert J. Schiff
Neil Gordon	Jeff Silverbush

Dr. Sheldon Grebstein
John I. Smeyne

Gerald Whitman

Trustees Emeritus

E. J. Evans
S. Earl Gordon
Sanders Heller

Harris Jacobs
Seymour Weisberg
Leonard Wolfe

THE CHAPTER ROLL OF TAU EPSILON PHI FRATERNITY:

Bradley University	Massachusetts Institute of Technology
Bryant College	New Jersey Institute of Technology
City College of New York	University of North Carolina
Clarkson College	Penn State University
Cornell University	University of Pennsylvania
University of Southern California	University of Rhode Island
Drexel University	Rochester Institute of Technology
Emory University	Rutgers University — Camden
University of Florida	St. Thomas University
University of South Florida	Syracuse University
University of Georgia	SUNY-Albany
Hofstra University	SUNY-Genesco
Husson College	Tulane University
Johns Hopkins University	Virginia Commonwealth University
University of Illinois	Western New England College
Lehigh University	
University of Maine	
Marietta College	
University of Maryland	

Colonies

University of California, Berkley	Rutgers University — New Brunswick
Lynchburg College	University of Michigan
Florida International University	SUNY-New Paltz
Queens College	SUNY-Binghamton
George Washington University	University of Miami
Towson State University	University of Vermont

Tau Epsilon Phi Fraternity
200/3088 Mercer University Drive
Atlanta, GA 30341

Postmaster: Please send form 3579 to the above address.

RETURN POSTAGE GUARANTEED

Non-Profit Organization U.S. Postage PAID Atlanta, Georgia Permit No. 1449
