

# PLUME

All Member  
Edition  
29,600 Copies

THE TAU EPSILON PHI FRATERNITY

SUMMER, 1986

VOLUME LXXV

USPS 436260

NUMBER 2

1985-86

**"It was a Very Good Year"**



**OUR NEW NATIONAL HEADQUARTERS**

## In This Issue

Executive Director's Report	2	Honor Roll	7
Consul's Report	3	Convention Report	8 & 9
1986 Endowment Fund Campaign	4	Scholarship Awards	12
Sid Suntag's Monumental History to be printed this summer	5	The History of Tau Epsilon Phi	13
Report of the Foundation President	6	In Memoriam	14 & 15
		Convention '87	16

## Executive Director's Report



**Michael Ivers**

Few men assume the office of International President of the Fraternity as well prepared as our current Consul, Gerald A. Denmark.

He was the first undergraduate ever elected to the Grand Council, the first National Fraternity to do so, in the summer of 1969. He has served continuously on the Council since that time. In 1978 he was elected to the Board of Directors of the TEP Foundation.

Upon graduating from Hofstra University in 1970 with a BBA in finance, Gerry entered the Brooklyn Law College, and while attending law school, served as part-time field director and assistant to then Executive Secretary Sidney S. Suntag. By coincidence, exactly 40 years earlier, Sid himself had served the Fraternity in much the same capacity while he was attending N.Y.U. College of Law.

Serving in that capacity, he was responsible for reactivating the Xi chapter at M.I.T., now considered one of our best by Executive Board rating committee. He continues to serve Xi chapter as a member of the Alumni Housing Committee of that group.

Upon graduating from law school in 1973, he moved to Pittsfield, Massachusetts, beginning his law practice in this beautiful city in the heart of the Berkshire mountains. He served as attorney for the City of Pittsfield for two years. Currently he is the senior partner in the firm of Denmark and Smith, specializing in Real Estate, Banking, and Corporate Law.

Married to the former Lynn Joffe, they are the parents of two sons, Jason, 11; and Jonathan, 8. Both Gerry and Lynn are extremely active

in civic, community, and religious affairs. At the age of 34 he was elected President of his congregation, the youngest man ever to hold that office in the 134 years of its existence. He was subsequently elected to another term.

The key to Gerald Denmark's success has been the recognition by his peers that age is not a determining factor of his abilities. He is the youngest man to serve as Consul of this Fraternity in over 50 years. Consul Denmark is especially dedicated to encouraging a greater input from the younger men of this Fraternity, and has already implemented a number of these programs.

The term, "Youth must be served," is certainly appropriate for Gerry as he took the direct control and leadership of the undergraduate chapters. Capable, concerned, and committed, Tau Epsilon Phi is indeed fortunate to be served by the gifted talents of Gerald A. Denmark.

In keeping with our program of publishing one All-Member *Plume* at least every 18 months, I am pleased to write a brief column as an introduction to this edition.

1985-86: IT WAS A VERY GOOD YEAR—An outstanding convention, increased services to the chapters, and new scholarship educational assistance to the undergraduates. I am proud of the achievements listed in various sections of the *Plume*. The report on the convention is by Gary Rosenstein (Tau Beta), and I believe has done an excellent job.

President Al Versacci makes mention of the accomplishments of the past year by the Foundation, and we are all grateful for his leadership. Our International President Gerry Denmark has provided forceful and innovative ideas in a number of programs that are indicative of the good fortune the Fraternity has in the way of leadership and vitality.

Of the changes that have been made, most important has been the emphasis on insuring our chapters and the undergraduates. As an attorney, he has recognized the legal liability of both undergraduates and their parents, and TEP is one of the leaders in the fraternity world by mandating liability coverage

through a National policy. Today, all alumni and parents can be secure in knowing that our undergraduates are covered for any eventuality that may arise.

This fall, TEP will publish a manual on Risk Management, with special emphasis on life and fire safety, elimination of hazing and an awareness of drug and alcohol abuse. A special section will be devoted to female assault and sexual harassment. This has become a major problem at many schools. In addition to the criminal aspects, the burden is on the chapter and the National Fraternity to implement programs to educating our young men to the awareness of what has become an issue to vital concern.

In addition to publishing a comprehensive manual covering these issues, TEP will be holding summer educational seminars throughout the country designed to further educate the undergraduates. Members of the Grand Council will be in attendance to help with answers to the many questions of legal liability.



### THE PLUME

Published by Tau Epsilon Phi National Fraternity and printed in Atlanta, Georgia, four times a year. The *PLUME* is the Official Educational and Fraternal publication of the Fraternity and postage is paid in Atlanta, GA. Annual subscription rate for members and friends is \$10.00 and is included in the annual membership dues.

Tau Epsilon Phi is a charter member of the National Interfraternity Conference. Manuscripts, news items and photos are welcome. Photos should be sharp, glossy black and white prints.

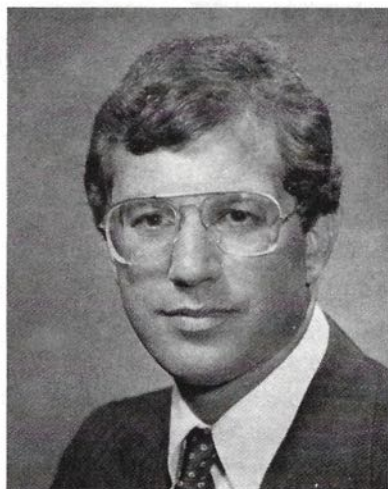
Address all correspondence:

*Editor, the PLUME*

200/3088 Mercer University Drive  
Atlanta, Georgia 30341

Postmaster: Please send form 3579 to the above address.

## Consul's Report



**Gerald A. Denmark**

Prior to assuming this office, my feelings about the National were about like most of you: My allegiance inclined more to my own chapter. However, you must realize that the world of college fraternity is a far more complicated endeavor than in the times of our undergraduate days. Today, refinancing the renovation of chapter houses runs into sums that far exceed the original cost of the buildings. Some chapters with old mortgages, are paying more for insurance than payments on the house.

About insurance: Many of you don't have to be reminded of the convolutions existent in the current market. Would you believe that over \$40 million dollars in law suits have been entered against college fraternities? Incidents that we considered pranks in our day, are now settled for sums in the millions. Alcohol and the increasing awareness of drug abuse remains a major problem, and frankly insurance carriers are reticent in covering fraternity chapters. All this by way of telling you that the National Fraternity has instituted a policy of liability protection for every member with a total coverage of \$4 million. This not only protects undergraduates, but in the era of "deep pocket" theory, protects the parents and alumni as well. TEP is in front of all national fraternities with installation of such a comprehensive program as this.

The National continues to assist

chapters in obtaining financing for desperately needed renovations. Last year assistance was provided by loans totaling over \$180,000.00! This spring we are providing additional loans and financing of an even greater amount to chapters such as Maryland, Georgia, Syracuse, Johns Hopkins, and Cornell to name just a few. Whether it be a new roof, new bathrooms, or in the case of the University of Pennsylvania, a whole new chapter house, The National Fraternity will stand behind its chapters to guarantee their needs.

In the months ahead, many new programs will be installed through my office as Consul. Realizing that this is the age of visual communication, the National Fraternity is purchasing video recording equipment in order to provide our chapters (and colonies) with video cassette messages in conjunction with manuals provided. A special video for those interested in establishing colonies will be made. In addition, we plan to offer our alumni a special program, "Recollections with Sid," in which our venerable Bald Eagle will reflect upon the Fraternity's glorious past.

In order to bring the National Fraternity into greater focus, let me briefly describe some of the services we plan to provide. This winter we will (with your cooperation) print the first up-to-date "Geographic" of the Fraternity in almost 25 years. By now, or shortly, you will receive a request for update information. The extent of your cooperation will be the degree of success of the publication. Please assist us. Another benefit available will be to provide you and the undergraduates with printouts and labels that you may request. The entire active list of 29,600 names will be on file in our computer, and will reflect this updated information.

The Illustrated History of Tau Epsilon Phi has been a rousing success: over 8,000 copies have been distributed to our alumni. For your complimentary copy, simply drop a note to the National Headquarters. In its second printing, and copies are again available. Elsewhere in the *Plume* is information on Sid Suintag's remarkable 400-plus page chronicle of Tau Epsilon Phi. This comprehen-

sive history of the Fraternity printed by the Foundation is noteworthy in the fact that no fraternity our size has been able to accomplish this feat.

A fraternity is only as good as its chapters, and I would like to mention the fact that this year, according to reports received at the National Headquarters, TEP's GPA on reporting campuses shows them to be, with few exceptions, in the top three, and in a number of cases, Number One! This is a reaffirmation of our strong program instituted by the TEP Foundation, and the Education Endowment program. The emphasis of the Foundation's commitment to higher education is further explained in this issue. I am proud to be associated with it, and its President Alfred Versacci.

In retrospect, there has been a change in climate in the fraternity world as a whole. Five years ago the entire fraternity system stood upon shaky ground. Many of the practices and programs were irrelevant to the '80s. All that has changed, for the better. The emphasis on education, alcohol abuse, services to both undergraduates and alumni, insurance protection in a litigious society, and a major building renovation program have made fraternities, and especially this Fraternity an active partner in the education process of all of our young people throughout this continent. Unlike the '70s when we complained, "What's happened to the college people?" Today we say, "Send us more."

We need your support. We need your assistance. Please join us in proving that we as alumni do care about our youngsters today. A gift to the Endowment fund is a gift to education. Is there a better legacy to leave behind? Is there a better bridge to build?"



**Sid Suintag and Gerald Denmark**

**“ . . . THERE FOLLOWS AFTER ME TODAY,  
A YOUTH WHOSE FEET  
MUST PASS THIS WAY.”**

**TO YOU  
FELLOW BRIDGEBUILDER . . .**

Last year the Fraternity combined with the TEP Foundation to inaugurate our \$750,000 ENDOWMENT FUND. The first year's campaign was an outstanding one for both. Foremost of the accomplishments was the funding of five additional merit scholarships to deserving students. This year we will be conducting leadership conferences in five regional areas. At the alumni level, sponsorship of six regional 75th Anniversary celebrations helped to bring together over one thousand TEP alumni coast to coast, for an evening of memories and friendship. This attendance displayed the truism: "Fraternity is forever."

This year, we are happy to announce that the Foundation has purchased, for the first time in our entire history, a home of our own. These offices will be shared jointly by both Fraternity and the Foundation.

Our coming year will again show a number of welcome additions and services to both Foundation and Fraternity. Our beloved Executive Director Emeritus, Sid Suntag, has completed TEP's history, and it is now at the typesetters. This massive volume which contains the story of our Fraternity, and a history of every chapter, will soon be available. In addition, a complete geographic, with over 30 thousand active names of our alumni will be published this summer. Shortly, you will receive a verification request. I hope you will reply promptly to be included in it.

I urge you to join with us in investing, not so much in your Fraternity or Foundation, but in the future: The education of our American Youth. It is a cause that is both right and necessary. As a Endowment sponsor, you will automatically become a member of the Alumni Association and receive all TEP mailings: For those of you who join us as a Anniversary Sponsor, or enter our Life Membership Program, we will mail you, free of charge, a copy of Sid's History of the Fraternity, "75 Years of Friendship." Simply indicate your choice in the enclosed form and mail to our offices.

---

**The TEP Foundation of  
Tau Epsilon Phi Fraternity  
\$750,000 ENDOWMENT FUND CAMPAIGN  
The Second Year**

- 75th Anniversary Sponsor (\$75.00 or more)\*  
 Life Sponsor \$225.00 in one Lump Sum, or inaugurate the program with the first of three annual \$75.00 installments\*  
You will receive the History of Tau Epsilon Phi with either of these two gifts.

\* A portion of your gift will be used for alumni dues.

- 1986 Endowment Fund Sponsor - \$30.00\*  
 Enclosed is my check payable to TEP Foundation, Inc.

- Charge my credit card  Visa  MasterCard

(Your contribution to the TEP Foundation is tax deductible)

Account No. \_\_\_\_\_

Signature \_\_\_\_\_

(All credit card payments must be signed)

- Check if you wish a complimentary copy of "The Illustrated History of Tau Epsilon Phi." Fifty pages of nostalgia and memories featuring photographs from the 75-year-old Fraternity archives.

---

---

## 75 Years in the Writing



Sidney S. Suntag

Writing the history of Tau Epsilon Phi is not an easy task; in fact, given the circumstances, almost impossible. In truth, it could only be written by one person—our legendary and beloved Executive Secretary, Sidney S. Suntag.

Sid has been the linchpin of the Fraternity, working in our National Offices for over 50 years. It is hard to imagine Tau Epsilon Phi without him. We both have had the good fortune and opportunity to have worked in the National Offices with Sid, and have been privy to his remarkable and impressive efforts. For those not privileged to know him, he is a storehouse of information, anecdotes, trivia, and tales about the many chapters and TEPmen who have graced our roll. His recall is incredible, and it is through his recollections, many of them the result of first hand interviews with the princi-

pals and founders of every chapter, that we are able to present this fascinating account of our Fraternity's sojourn through seven and a half decades on North America's college university campuses.

Because of our personal knowledge gained by living it, and working with it, we are honored to have had a part in sponsoring its publication. To Sid, who has spent over five years in writing it, our sincere appreciation. To those wonderful men and active chapters who contributed as sponsors that made the publication of this history possible, our heartfelt gratitude.

The dictionary defines a history as a systematic written account that records and explains past events. The "History" of Tau Epsilon Phi does just that. We hope you will enjoy it as much as all of us have enjoyed bringing it to you.

Alfred C. Versacci, President  
TEP Foundation, Inc.  
Scarsdale, New York

Gerald A. Denmark, Consul  
Tau Epsilon Phi Fraternity, Inc.  
Pittsfield, Massachusetts

As an ENDOWMENT SPONSOR for 1986, you will receive your 1986 membership and all TEP publications including the *PLUME* for 1986. We will send you our special anniversary ALUMNI Decal.

As an Anniversary Sponsor (\$75.00 or more); by entering into the Life Sponsorship program (three yearly installments of \$75.00), or by paying your life sponsorship in full, (\$225.00) you will receive a copy of the History of Tau Epsilon Phi Fraternity.

## THE HISTORY OF TAU EPSILON PHI

*75 Years of Friendship*

**1910-1985**

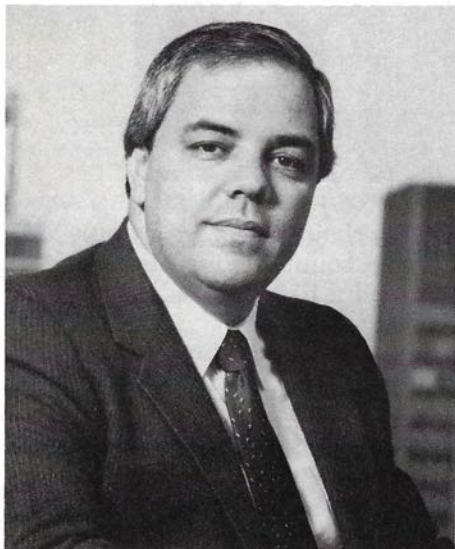
by

**Sidney S. Suntag, J.D.**

**Executive Secretary**

**1946-79**

## Report of the Foundation President



Al Versacci

In this my third year as President of the TEP Foundation, I took particular pride in mailing out our applications for scholarships, loans and awards. In the past five years, our Fraternity and Foundation has reemerged as a significant factor on college campuses. Our undergraduate membership has almost doubled, and we are involved in the largest expansion program in years.

This growth has required the Foundation to provide additional support and aid to meet the demands of the increased undergraduate membership. What was sufficient before cannot serve the needs of twice the number. With this in mind, in 1984, the Foundation assumed the responsibility of raising additional funds to provide more aid to students, and to make available additional funds for chapter education through grants made to Fraternity operations.

I am proud to have taken part in what must be described as an incredible display of good will and concern by our alumni. The Student Aid and Scholarship Fund was created in 1953 by members of the Fraternity who felt that gifts dedicated to educa-

tional purposes ONLY should be tax deductible. It was felt that by adding this inducement, gifts of a larger amount would be received.

Of that figure, over 25% has been raised in the past four years. As we enter the gift giving campaigns for 1986, the second year of our 5-year \$750,000.00 Endowment effort, I feel confident that we will achieve our goal. Last year's initial fund raising effort provided the Foundation with its most successful year since the inception of the Fund. Based upon a natural progression of enthusiasm, as well as efforts by our offices, the second year goal is realistic and attainable.

The Fraternity has joined with the Foundation in all national fund raising so that the Foundation can achieve its purpose. Simply put, the undergraduates are not being subsidized with alumni contributions. This change, innovated in fall of 1984, is to me a display of sincerity on their part. They are telling us, "We'll take care of ourselves; raise the money to help those that need it." I like that, and I am proud of them. As past Consul, and now President of the Foundation, I can assure you that the best part of working in this organization is getting to know our undergraduates.

This year, the Scholarships available have been increased by four, and a special mention of our gratitude is in order. The New Scholarship Awards are:

The Leviton Leadership Award, a gift of TEP's Man of the Year, Harold I. Leviton (Tau Xi). The first of two gifts to the Foundation, Bro. Leviton will be funding a leadership school this coming year. Incidentally, Harold has served on both Grand Council and the Foundation's Board of Directors for many years.

Bro. Larry Liebross (Nu) has funded in honor of his Dad and Uncle, the Joseph (Beta) and Irving (Gamma) Liebross Dental Award, dedicated to support a needy and deserving student who will be attending dental school.

To long time friend of the Foundation, Howard Perlow (Tau Beta), our appreciation on behalf of his chapter,

for creating the Perlow Brothers Award which honors a member of The University of Maryland for outstanding service and scholarship.

There are two other items of importance I wish to share with you. Part of the Foundation's investment program this past year enabled us to purchase, for the first time in its history, our very own headquarters. The return (from rental to the Fraternity) provides a greater return than the Foundation's average investment yield.

Another accomplishment of the year has been the funding of the History of the Fraternity, written by Sidney S. Suntag, initially funded by the Foundation. This is a special accomplishment for I have been advised by our Executive Director that we are the only fraternity of our size that has accomplished this feat. As you know, last year's precursor, the Illustrated History was a National Fraternity first. Through the efforts of others, who as sponsors, have enabled the printing of this book, all TEPs who have purchased the book will be the beneficiaries of this historic undertaking. Again, to prove the quality of our undergraduates, each chapter has bought the same deluxe leather bound edition, personally inscribed to them by Sid himself.

And finally, my thanks to the almost 100 subscribers of that deluxe edition, which has been dedicated to each and every one of them by our beloved author and long time Executive Secretary.

The contribution of the chapters and the alumni deserve mention, and we have listed, following this article, all those who have purchased the 75th Anniversary Sponsor edition, men who for years have supported the efforts of our Foundation in the field of education.

This *Plume* is devoted equally to the past as well as the present. We have tried to convey the dynamics of the future as well as great historical past. We hope you will respond to our requests for assistance that will enable us to continue to build the bridge to the future.

## Honor Roll

### Sponsors of "The History of Tau Epsilon Phi"

Mr. Ben Alperstein  
 Dr. Robert T. Bass  
 Mr. Stuart Blumberg  
 Mr. Lee J. Brenner  
 Mr. William L. Cohen  
 Mr. Earl Cohn  
 Mr. Paul L. Cox, III  
 Mr. Gerald Denmark  
 Dr. Lloyd R. Dropkin  
 Mr. Michael Dunn  
 Dr. Bernard Eichler  
 Mr. Lloyd D. Elgart  
 Mr. Eli N. Evans  
 Mr. E. J. Evans  
 Mr. Robert M. Evans  
 Mr. Norman Feldman  
 Mr. Raymond Finkel  
 Mr. Harry Finkelman  
 Mr. Ronald Friedman  
 Mr. Robert Gal  
 Mr. Lowell R. Glazer  
 Mr. Robert Goldman  
 Mr. George Goldstein  
 Dr. Harry M. Goldstein  
 Mr. Leo M. Gordon  
 Mr. S. Earl Gordon  
 Mr. John P. Green  
 Judge Charles Henchel  
 Mr. Harris Jacobs  
 Mr. Arthur M. Kahn  
 Mr. Burton Kahn  
 Mr. Robert Kamin  
 Mr. Samuel J. LeFrak  
 Mr. Harold Leviton  
 Mr. Jerome Kobre  
 Mr. Michael Ivers  
 Mr. Irving Lebow  
 Mr. Richard Levy  
 Mr. Edward G. Lewis  
 Mr. John Lindsay  
 Mr. Joseph Lipshie  
 Mr. Alan Lipton  
 Mr. Robert K. Low  
 Mr. Louis L. Manes  
 Mr. Marvin Manes  
 Mr. Stephen Manes  
 Mr. Frederic R. Mann  
 Mr. Irvin Massell  
 Mr. Ralph Medjuck  
 Mr. Allen Meisels  
 Mr. Stanley Miller  
 Mr. Irving Missner

Mr. Brent Moritz  
 Mr. Frederick M. Nicholas  
 Mr. Alfred Pasternak  
 Mr. Howard L. Perlow  
 Mr. Marshall Persky  
 Mr. Paul R. Portnof  
 Mr. Sidney Portnof  
 Mr. Phillip Rose  
 Mr. Harold Rouse  
 Mr. Marcus Ruben  
 Mr. Stanley I. Schachter  
 Mr. Albert Schiff  
 Mr. Robert S. Schiffman  
 Mr. Howard H. Schultz  
 Mr. Arnold Schwartz  
 Mr. Betram Shaiman  
 Mrs. Sol D. Shaman  
 Mr. Jeff Silverbush  
 Mr. John I. Smeyne  
 Mr. Al Spivak  
 Mr. Sidney Suntag  
 Mr. Albert Tandler  
 Mr. Saul Turteltaub  
 Mr. Alfred C. Versacci  
 Dr. James Weinberg  
 Mr. Seymour Weisberg  
 Mr. Leonard Wolf  
 Mr. Michael Wolf  
 Mr. George Wolly

### Sponsoring Chapters

Alpha Sigma  
 Suny @ Albany  
 Delta  
 Cornell University  
 Delta Epsilon (Colony)  
 St. Thomas University  
 Delta Chi Colony  
 Lynchburg College  
 Epsilon Eta  
 Drexel University  
 Epsilon Kappa  
 Tulane University  
 Epsilon Lambda  
 City College of N.Y.  
 Epsilon Nu  
 Rochester Institute of Technology  
 Epsilon Pi  
 Marietta College  
 Epsilon Tau  
 Bradley University

Epsilon Phi  
 Penn State University  
 Kappa Gamma (Colony)  
 Virginia Commonwealth University  
 Lambda Phi Epsilon  
 Clarkson Tech.  
 Mu  
 Emory University  
 Nu  
 University of Georgia  
 Xi  
 Mass. Inst. of Technology (M.I.T.)  
 Rho  
 University of Pennsylvania  
 Sigma  
 Syracuse University  
 Sigma Alpha Sigma  
 Hofstra University  
 Sigma Epsilon  
 Rutgers @ Camden  
 Sigma Lambda  
 Bryant College  
 Tau Alpha  
 University of Florida  
 Tau Alpha Kappa  
 Lehigh University  
 Tau Beta  
 University of Maryland  
 Tau Gamma  
 University of So. California  
 Tau Zeta  
 University of Maine  
 Tau Sigma Upsilon  
 Towson State University  
 Tau Psi  
 N. Jersey Inst. of Technology  
 Tau Omega  
 Rhode Island University  
 Phi Beta  
 University of South Florida  
 Phi Eta  
 Johns Hopkins University  
 Phi Omicron  
 W. New England College  
 Phi Sigma Chi  
 Cal Poly (Pomona)  
 Chi (Colony)  
 University of Michigan  
 Psi  
 University of Illinois  
 Omega  
 University of North Carolina  
 Omega Beta Psi  
 Suny @ Geneseo  
 Omega Upsilon Chi  
 Husson College

## Convention Report

The winner of our Fraternity and Foundation's most prestigious undergraduate award, the "Doc" Schwartz Undergraduate of the Year, is Gary Rosenstein, of Maryland's Tau Beta Chapter. I have known Gary since he initiated into the Fraternity back in January of 1983. Perhaps the most rewarding aspect of this job is to watch these youngsters mature into manhood, and it has been especially pleasing to observe the growth of Gary.

As Chancellor, Tau Beta won the Chapter of the Year Award in 1985. Three years ago, Tau Beta was on the brink of extinction, and now, with the aid of long time Alumni Advisor, John Smeyne, it is sound, vital, and confident of its future. So strong are they, that the National has recently arranged a loan of \$100,000.00 to improve and renovate their home. Much of the credit is due to this young man.

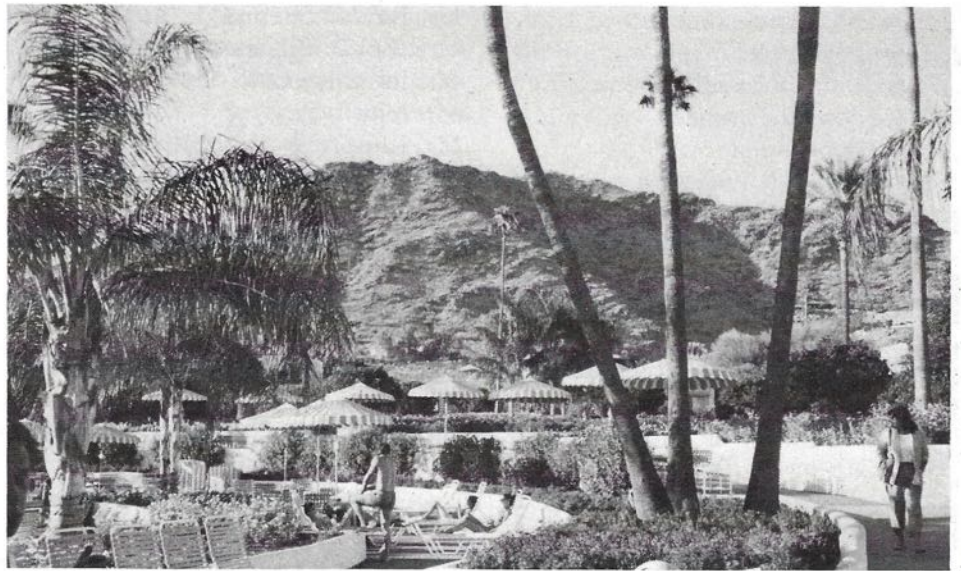
With all his work in both scholastics and fraternity, he has managed to be active in community affairs and charity fund raising.

He is outstanding. I asked him to report the results and activities of our past Convention. You will enjoy his report.



**Gary Rosenstein**

As with most Easterners, my idea of the desert was limited to remembrances of the movies like "Beau Geste," with mountains of white sand that stretched for endless miles. Shock #1 was my arrival at the Phoenix airport. I was amazed to learn that Phoenix was the 7th largest city in the United States, and growing faster than any other. The 2nd thing I learned was that the Southwest, which is synonymous with the desert, takes great pride in its American Indian influence. This blend of old and new, with an emphasis on the rugged history of the "Old West," was further exemplified upon our arrival at the Camelback Inn, site of our '85 convention.



**Site of 75th Anniversary "Cactus Convention", Camelback Inn, Scottsdale, Arizona**

Pictures simply do not do it justice, for the Camelback (named for the mountain that is shaped like a camel and just across the road from the Inn) is both elegant and yet at the same time landscaped with the cactus and flowers of the area.

The best part of the convention are the people, both undergraduate and alumni, and we, as undergraduates were particularly awed by meeting the men who were a part of this Fraternity over 50 years ago! I make special mention of Brothers Israel Gerber (Cornell, 1928), Harold Romain of Ohio State (1928), Melvin Shikes of M.I.T. who initiated (I think) in 1925, Al Tandler of Penn (1927) and an all-to-short visit from past Consul

Lou Manes who initiated and was one of the founders of the chapter at Ohio State back in 1926. We were also graced with the presence of delightful Reva Shaman, widow of Past Consul Sol Shaman who also initiated through the Ohio State chapter back in 1928.

It is the undergraduates, quite naturally who gravitate to one another, and one can never fail to be impressed with the quality of men who represent the chapters of this Fraternity from all over the country. Mike Ivers had told me that the convention begins with most men as strangers, only to become fast and lifelong friends in just a few short days. It is absolutely true. Also it was

good to be with members of Grand Council on a personal basis in a setting such as Camelback where we could talk to them in a relaxed and informal setting.

The seminars are really informative and the program and agenda covers all aspects of the operations of both the National and local chapters. The overriding concern on the part of National is the necessity of liability insurance. Jim Favor, a nationally recognized expert on fraternity insurance lectured us on the importance of being properly insured. Citing case after case in which members of chapters and their parents have been held liable for accidents and incidents involving members

and non-members, we came away aware of our responsibility to ourselves and our parents, as well as the Fraternity.

The first result of meetings regarding alcohol, its abuse, and our responsibility was the drafting of a resolution pertaining to alcohol and drugs. It is reprinted in this issue. We are one of the first National Fraternities to take so strong a stand. The major involvement of the Constitutional Committee was a final solution to a problem that has plagued the National for almost 20 years: The issue of Co-Ed chapters and membership status granted to women.

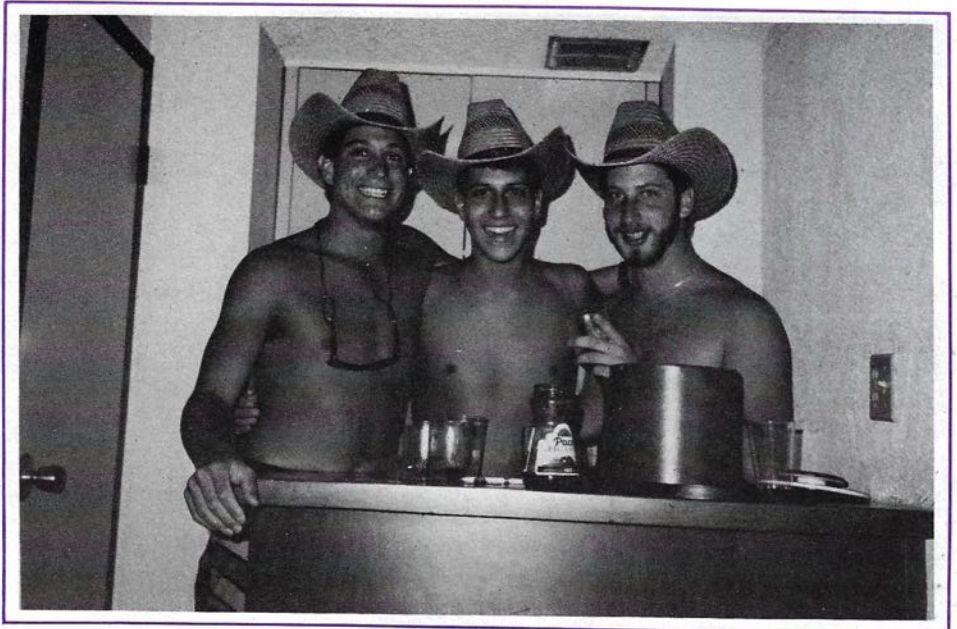
Many of us learned for the first time that about 20 years ago, a number of chapters were threatened with extinction and resorted to bringing in associate female members. Thus began the emergence of a little sister program that to some chapters become a vital ingredient in their survival. In the ensuing years, at some chapters, little sister membership



**Convention Coordinator Dorothy Ivers provided a woman's touch and made things run smoothly**

gradually evolved into something a great deal more: The actual initiation into chapters through the use of our sacred ritual.

We also learned that except for the convention in 1983, a constitutional amendment allowing women had been brought up and defeated at every convention since 1969! The battle lines were drawn, and the chapters that were inducting female members entered a motion to amend the Constitution's requirement of membership to read "persons" of good moral character rather than "men."



**(left to right) Maryland's Rosenstein and Schillman, Florida's Seidel**

The debate ran hot and heavy with impassioned pleas from both sides. I believe the deciding factor was the reemergence of a strong Greek system throughout the country, and the desire to preserve what had enabled the entire system to survive over 200 years . . . A separate and distinct system for both men and women. Further investigation and information supplied by the National offices showed that the Title IX educational amendments exempted fraternities and sororities from any regulation.

The question, never seriously in doubt, was resolved on the final day when amendments were voted upon. Tau Epsilon Phi would remain a men's Fraternity. Our Alpha colony, scheduled to be rechartered in the fall resigned in protest, while the Rutgers (New Brunswick) Chancellor acknowledged the decision, but made no statement to the contrary of the decision. Only later did we discover that they returned that fall, fully intending to "do business as usual." Sadly, but necessary, the Gamma Sigma chapter's charter was revoked at the Grand Council meeting in October.

There were memorable moments and events worth describing at the convention: The trip to Sedona, the little Grand Canyon, the steak night up on Pinnacle Peak, the Awards Banquet when my chapter received its well earned award as Number 1,

and lastly, the Grand Chapter Banquet that closed this unforgettable week in Arizona.

I was especially honored to be on the dais with Past Consul Bud Schiff, newly elected Consul Gerry Denmark, TEP's Man of the Year, Harold Leviton, and most especially, Executive Director Emeritus Sid Suntag. In my speech of accepting the award as Undergraduate of the Year, I made special reference to my chapter brothers at University of Maryland, who showed their quality and support by being awarded the Irving Golumbe trophy as the Outstanding Chapter of the Year.

A special thanks is due to the TEP Foundation who provided me and other undergraduates grants to attend and take part in seminars involving chapter affairs such as rush, financial operations, management, and administration. Judging from the compliments we received, this newly instituted practice, a direct result of the endowment campaign, is one worth repeating again.

And finally, a closing word to all members of our Fraternity: The TEP experience was, and is, a good one. What I learned, what I achieved, what I experienced is something special known as "Fraternity." I readily understand why so many of you support it, and why I, when I am able, will contribute with the same understanding and purpose.

# Convention Candies



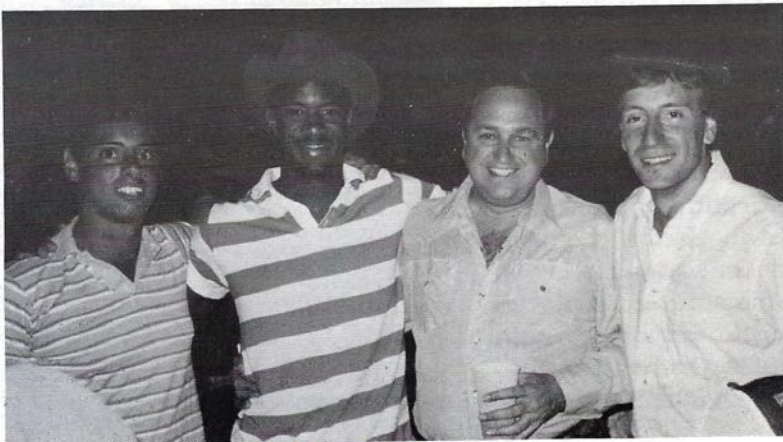
*Little Desert Sun*  
 (left to right) Maryland's Shillman; Georgia's Siegel and Hofstra's Griffith



*Caught by candid camera,*  
 Undergraduate of the Year  
 (1986) Michael Siegel, and  
 Undergraduate of the Year  
 (1985) Gary Rosenstein



(left to right) Larry Baumwald, Alumni Advisor, Georgia; Gary Rosenstein, Undergraduate of the Year; Michael Siegel, Georgia; Scott Griffith, Hofstra; Jon Seidel, Florida; Brian Malis, Illinois; Ron Charpentier, Cal Poly, (Suntag Scholar); Mike Berlinger, CCNY (member grand council)



*1985 Arizona Convention*  
 (left to right) Brian Mallis, Psi (IU); Hermon Eastman, Chancellor, (USC); Bud Schiff, and Jeff Gordon

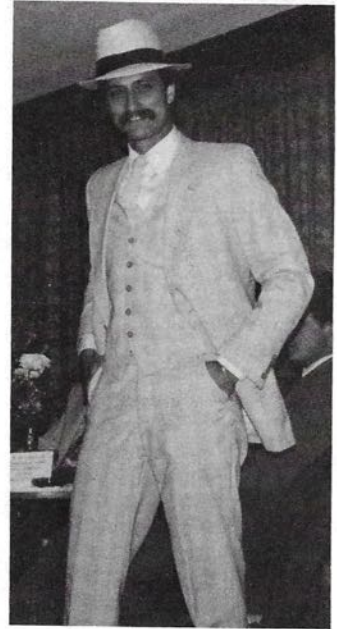


*Cooling off at Sliding Rock*

# Convention Candies



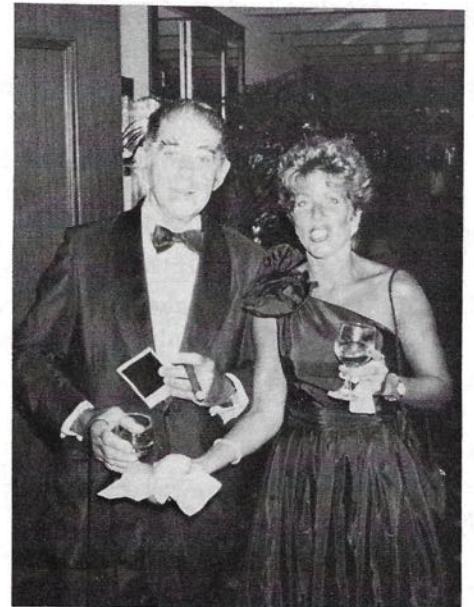
*Usual hijinks at any convention – Camelback was no exception*



*Mike Berlinger, recently elected National Secretary of Grand Council, preennial well dressed "peacock" at the convention*



*Past Consul "Bud" Schiff administrating oath of office to newly elected successor Gerald A. Denmark*



*Man of the Year, Harold Leviton, poses with Lynn Denmark, wife of our new consul*



*Outstanding Achievement Recipients at Arizona Convention in 1985*

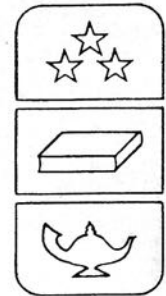
*(left to right) Durocher, Penn.; Eastmond, USC; Schillman, Rosens- tein, Maryland; Seidel, Florida; McCulley, Tulane; Marchuck, M.I.T.*

**See You in Orlando  
Convention '87**

Get ready for a  
Florida fun-filled,  
sun-filled adventure



# Scholarship Awards



## 1985 Scholarship Awards of the TEP Foundation

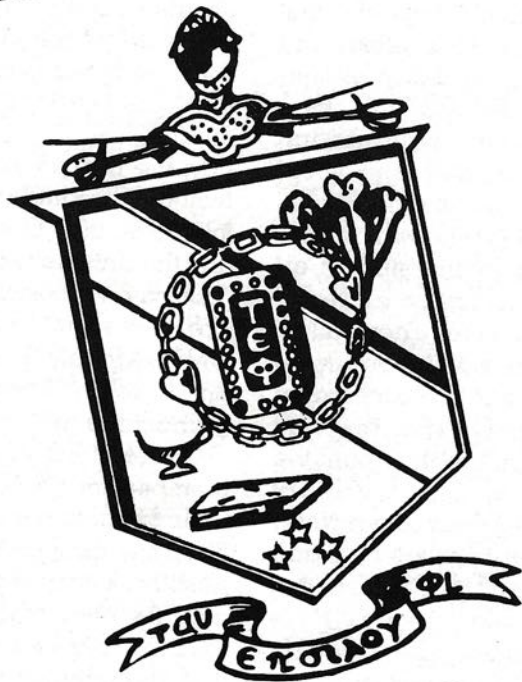
- I. "DOC" SCHWARTZ Undergraduate of the Year Award**  
GARY ROSENTSTEIN, University of Maryland
- SIDNEY SUNTAG Scholarship Award**  
RONALD CHARPENTIER, Cal Poly - Pomona
- JACK A. KING Memorial Scholarship Award**  
ANDREW GOLD, University of Pennsylvania
- SAMUEL J. LeFRAK Scholarship Award**  
RICHARD MANNING, Lehigh University
- ELLIOT GARBER Memorial Award**  
DERYCK JONES, Emory University
- SOL & REVA SHAMAN Scholarship Award**  
JONATHAN LEVY, University of Maryland
- A. HAROLD FROST Scholarship Award**  
MICHAEL REILLY, Columbia University
- SARA & E. J. EVANS Award**  
JEREMY OFFSYER, University of North Carolina
- I. HEIMAN Memorial Scholarship Award**  
MICHAEL SIEGEL, University of Georgia
- PERLOW BROTHERS Scholarship Award**  
SANJAY SHIRODKAR, University of Maryland
- LEONARD WOLF Scholarship Award**  
JONATHAN SEIDEL, University of Florida
- NORTHEAST Scholarship Award**  
MARK PERRY, Clarkson Col. Tech.
- LOUIS L. MANES Leadership Award**  
JARRY FRADIN, University of Illinois
- ARTHUR OCHS JR. Memorial Scholarship Award**  
DEREK AIAU, University So. California
- S. CHARLES LERNER Memorial Award**  
JOHN YUEN, Cornell University
- JOSEPH & IRVING LEIBROSS Dental Award**  
SCOTT KOVAC, S.U.N.Y. - Geneseo

## 1986 Scholarship Awards of the TEP Foundation

- I. "DOC" SCHWARTZ Undergraduate of the Year Award**  
MICHAEL SIEGEL, University of Georgia
- HAROLD I. LEVITON Achievement Award**  
MILES ELLENBY, University of Illinois
- JOSEPH FORD Scholarship Award**  
HAMILTON MOY, Jr., M.I.T.
- DANIEL COMM Architectural Achievement Award**  
WILLIAM GOLUBINSKI, New Jersey Inst. Tech.
- I. HEIMAN Memorial Scholarship Award**  
CRAIG GREBEN, Emory University
- S. CHARLES LERNER Memorial Award**  
DAVID G. OLSON, Cornell University
- NORTHEAST Scholarship Award**  
ROBERT KING, Clarkson Col. Tech.
- A. HAROLD FROST Scholarship Award**  
JOHN SCHACTER, Princeton University
- SOL & REVA SHAMAN Scholarship Award**  
GERALD FRADIN, University of Illinois
- FRANK CONSTANGY Memorial Scholarship Award**  
HAROLD BERGER, University of North Carolina
- LOUIS MANES Leadership Award**  
MICHAEL SCHLAUCH, Rochester Inst. Tech.
- ARTHUR OCHS Memorial Scholarship Award**  
SCOTT GRIFFITH, Hofstra University
- SAMUEL LeFRAK Scholarship Award**  
BRUCK ZUCKERBERG, University of Maryland
- PERLOW BROTHERS Scholarship Award**  
PETER S. FAYNE, University of Maryland

THE TAU EPSILON PHI FRATERNITY

ALL MEMBER GEOGRAPHIC



December 1986

**Have You  
Responded Yet?**

TEP's first all  
member  
geographic in over  
17 years!

The more replies  
the better the listing

*If you have not received your information request  
please notify us today. (Use reply envelope in centerfold.)*

c/o National Offices  
Tau Epsilon Phi  
200/3088 Mercer University Drive  
Atlanta, GA 30341

*The Geographic will be printed & mailed in December.*

**Parents of recent graduates:**

Please send us your son's latest address. We want them in the directory.

## In Memoriam



**Mrs. Sara Nachamson Evans**

It is with great sadness and deep regret that we report the passing of Mrs. Sara Nachamson Evans, wife of our long time friend and supporter, Bro. E. J. Evans. A fourth generation American, she was born in Kinston, North Carolina, in 1906. Mrs. Evans (or Miz Sara, as she was known to many) was "Den mother" to three generations of TEPs at Chapel Hill, as well as the provider of a home away

from home for the Delta Upsilon chapter at Duke University (where she herself attended in the mid 1920s).

As a young girl, she came to Durham when her family moved from Kinston in 1921 to open the United Dollar store. While attending Duke, her father became ill, and as the oldest of nine children (the first eight were girls!), she left college and assumed the responsibility of running the family business. Even then, everyone who knew her was impressed with her grasp of business and finance matters. She met Evans, nicknamed "Mutt," who was a star athlete and outstanding student attending the University of North Carolina at that time. They fell in love, and upon graduation, were married. The son of a businessman himself, he entered Miz Sara's family business and together they built the single unit in Durham into a chain of stores that spread throughout North Carolina and Virginia, later renaming them the United Department Stores.

A talented business executive and board member of several corporations, she directed the family's business while her husband served six

terms as Mayor of Durham. Nevertheless, she found time for her commitment to religious and community affairs. She headed the women's division of the United Way campaign in 1952, was an active member of the League of Women Voters and the North Carolina Board of the Association of the United Nations. Mrs. Evans led the United Fund Campaign of 1960. Her contributions to the Hadasah and active participation in both local and national affairs are legendary.

In the past 15 years, she and her husband created and supported the Judaic Studies Center at both Duke and the University of North Carolina.

Surviving besides her husband, are two sons, Bob and Eli (both OMEGAmen), five sisters, brother Bill, (also an Omega TEP), and four grandchildren.

Generations of TEPmen will remember her generosity, her indomitable spirit, and a commitment to the fraternity through her support of her husband's sixty years of bridgebuilding. As men whose lives she has touched, our hearts go out to "Mutt" and the family over the loss of this wonderful and generous woman. We shall all miss her.



**Benny Goodman**

Benny Goodman, the King of Swing whose clarinet was a major factor in American Jazz Music for 60 years, died of an apparent heart attack on June 13, 1986. He was 77 years old.

One of 12 children, he was born in Chicago, in 1909. His immigrant father never made more than \$20 a week, and Benny was an early school drop out in order to help support the family. By the time he was 15 he was

making twice his father's salary as a musician with dance bands in the Chicago area. Still wearing short pants, he was recruited to play in one of the major dance bands in the country. Joining the orchestra in California, his father made him a going away present, his first pair of long trousers. He was not quite 17 years old!

During the late 20's and early 30's he established a reputation as an outstanding jazz musician and clarinet soloist. In 1935, he organized his own orchestra, with a strong emphasis on up beat arrangements. Playing on a daily radio program called, Let's Dance, Benny, his orchestra, and his music became the rage of young dancing America.

When visiting the Ohio State campus in 1936, at the very height of his fame, the Tau Delta Chapter initiated him into the Fraternity. He remained a loyal TEP throughout the years. As

a student at Syracuse, I remember when he dropped in our Chapter House in 1952, playing a duet with one of our chapter brothers.

A quite and introspective man, he was a major musical influence on musicians, and his orchestras provided a learning ground for many future band leaders, including Harry James, Gene Krupa, and Lionel Hampton. Goodman is remembered for being the first major band leader to tour with black musicians and insist upon equal treatment for them. In 1937, he made a Hollywood movie that showed his integrated quartet playing arrangements without any fanfare.

He is remembered as being a pioneer, both in music and in human relations; a man whose life was motivated by the principal of excellence regardless of race, color, or creed. He was a man who lived by our fraternal creed, and a TEP we were justly proud of.



**Bro. Sam Bredow (1912-1985)**

A tribute by Sidney S. Suntag, Executive Director, Emeritus, Tau Epsilon Phi.

Sam Bredow was well into middle age before he even heard about fraternities, never having had the opportunity to go to college in his youth, he became Mu chapters chief benefactor through much of the later part of the chapter's history.

In the early 1950's, Mu Chapter was a small struggling group in a new house that they could hardly afford to maintain. Constantly in debt to purveyors, its future looked bleak indeed until Sam Bredow, an Atlanta businessman whose daughter was a TEP sweetheart, volunteered to help the all but failed chapter. As a result of his close supervision and strict financial accountability, Mu Chapter, in a matter of two years, not only survived but became one of the strongest groups on campus. That position of recognition carries to the present day. In grateful appreciation, the chapter bestowed upon him associate membership in the fraternity.

For over a decade, he labored faithfully and well on behalf of all of us, and when the chapter appeared to be on its feet, he relinquished his position as advisor, only to be drafted as treasurer of Mu's housing corporation. He was a good man, whose year's of unselfish service reflected the innate goodness of his character.

My friendship with Sam goes back many years, and I was both pleased and proud when he received the Michael C. C. Lilienfeld Award, the National's recognition of a man who has served the Fraternity with extraordinary service. I know how much

he deserved this award. I was there in the time of the Chapter's need. It was Sam's attention to the every day operation of the Fraternity that en-

abled the National to concentrate on their rush and recruitment programs that enabled the Chapter to grow.

He will be sorely missed.

## Chapter Eternal

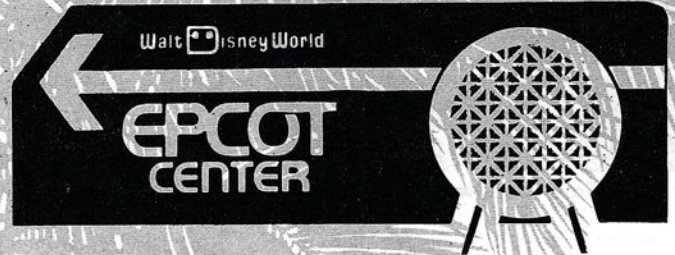
Richard Antonoff, Tau Gamma	Leon Hirsh, Tau Epsilon
Jerry Bendamon, Tau Gamma	M. Hirshberg, Eta
Louis Berkowitz, Alpha	Ronald E. Holfman, Epsilon Pi
Bernard Berman, Mu	Arthur Israel, Jr., Upsilon
Benjamin Birnbaum, Kappa	Leon K. Jacobs, Theta
Abraham Blau, Omicrom	Alvin Josephs, Mu
Alan Bloom, Xi	David Kaplan, Gamma
Edward Blumenkranz, Tau Lambda	Howard Kates, Tau Gamma
Phil Bookmay, Tau Omicrom	Dewey Katz, Kappa
(Auburn)	Philip Katz, Tau Pi
Sam Bredow, Mu	Aaron Kaufman, Eta
Robert Breitstein, Tau Gamma	Maurice, Kaye, Tau Lambda
Arthur Cahn, Alpha	Harvey L. Klein, Epsilon
Arthur Chorost, Tau Alpha	Max M. Klein, Eta
Horace Cohen, Sigma	Myer Kolodny, Theta
S. Irving Copen, Eta	Albert Kopple, Mu
David Dimmondstone, Zeta	David Kreinson, Sigma
Louis Dolgenes, Gamma	Edward Kronsberg, Upsilon
Israel Edelstein, Eta	Sidney Lapin, Beta
Louis Ehrlick, Tau Rho	John E. Lavin, Tau Zeta
Bernard Elias, Tau Gamma	Lee Lawrence, Tau Xi
Sylman Euzent, Tau Beta	H. A. Leventhal, Theta
Carleton Fenton, Tau Pi	Herman Levine, Iota
Joseph Fiege, Phi Delta	Samuel Levine, Tau Gamma
Charles Frankel, Pi	William, Levitt, Phi
William Freeman, Zeta Lambda Phi	Howard Lippman, Tau Omega
Abraham Freirich, Zeta	Sidney Lipson, Rho
Samuel Fried, Delta	Norman Louis, Tau Gamma
Isidore Giuher, Upsilon	Elmer Lukin, Tau Gamma
Jerome Glassman, Phi Delta	J. Robert Mantler, Gamma
Benny Goodman, Tau Delta	Stewart Marcus, Sigma
James Goodman, Tau Nu	Norman Markowitz, Tau Lambda
Joel Gottlieb, Epsilon Tau	Ira Masor, Kappa Zeta Phi
Edward Gould, Iota	Morton Matlaf, Tau Gamma
William R. Green, Iota	Bruce J. McQuade, Epsilon Mu
Benjamin Greenwald, Gamma	Jules Meistrich, Gamma
Herman I. Gross, Tau Delta	Ernest Michelson, Kappa Zeta Phi
Nathan Haffer, Theta	Leonard C. Miller, Alpha
Leo Halperin, Psi	Jack Mittelman, Epsilon Gamma
Louis Hamberger, Theta	Leo Moskowitz, Delta
Harry Hammer, Alpha	Herbert S. Moss, Omega
Edward Handverger, Tau Pi	Joe Murnick, Omega
Melvin Helitzer, Sigma	Seymour Neiditch, Omega
Bruce P. Hermalin, Epsilon Rho	Jerry Nemer, Tau Gamma

# Convention '87

Get ready for a Florida fun-filled, sun-filled adventure

HYATT  ORLANDO

NEIGHBOR TO WALT DISNEY WORLD



## ORLANDO

Deluxe accommodations at  
the Award-winning HYATT ORLANDO

Trip to the FANTASTIC Church Street Station

Dinner Dance with Delta Phi Epsilon Sorority  
(Holding their Convention in conjunction with TEP)

Full day (and night) at unbelievable EPCOT CENTER

Awards Luncheon — 77th Anniversary Grand Banquet and Dance  
Bar-B-Que, Alumni reception, social affairs with Delta Phi Epsilon, and  
more . . . much more!

**Tau Epsilon Phi Fraternity**  
200/3088 Mercer University Drive  
Atlanta, GA 30341

Postmaster: Please send form  
3579 to the above address.

RETURN POSTAGE GUARANTEED

TO PARENTS: Your son's magazine is sent to his home  
address while he is in college. We hope that you enjoy  
seeing it. But if he is not in college and is not living at  
home, please send his new permanent address to:

NAME \_\_\_\_\_

STREET \_\_\_\_\_

STATE \_\_\_\_\_ ZIP \_\_\_\_\_

CHAPTER \_\_\_\_\_

**PLEASE INCLUDE MAILING LABEL**

Non-Profit Organization  
U.S. Postage  
**PAID**  
Atlanta, Georgia  
Permit No. 1449