



# the PLUME of Tau Epsilon Phi

VOLUME LXX

SPRING 1977

NUMBER 2

## The Fraternity Neighbors Love

IT is a well known fact of life that Fraternities in urban or suburban areas which are not necessarily college oriented, are not exactly welcomed by their neighbors. To say the least, Fraternities as a rule, are not only resented but often are the object of police and court action instituted by Community Associations designed to force Fraternity houses to move from their midst. Even those of us who believe that the Fraternity system is the "world's greatest youth movement" would prefer not to reside in the immediate area of a Fraternity House or houses under normal circumstances.

It is therefore particularly refreshing that there is at least one Fraternity that is not only tolerated, but actually loved and respected by all of its neighbors! That fraternity? — the Phi Eta chapter of Tau Epsilon Phi at Johns Hopkins University located in the heart of one of Baltimore's most prestigious neighborhoods consisting of beautiful individual homes and condominiums. How does this 80 man chapter do it? While other Fraternities in the Hopkins campus area are continually harassed by law suits, and police visitations, the TEP House is praised by the neighbors. A not uncommon occurrence on Highfield Road each evening is for neighbors to bring over cakes, and other goodies for the boys who live in the

house. Amazing isn't it? Well, not so amazing when one knows the consideration shown by the chapter to its neighbors. On house party nights, a house Committee makes sure that windows are shut tight while the rock band plays and opened only during intermissions. The Committee further sees to it that no group or groups congregate outside the house before, during, and after a house party. Occasionally, things do get out of hand. When this happens, the chapter sees to it that each neighbor receives a bottle of champagne with an apology.

Community involvement however, is where the chapter really shines. Teaching neighborhood children to swim, and tutoring them in their grammar and high school courses; doing volunteer work at hospitals and trauma centers; inviting neighbors to house cocktail parties; and deep involvement in the Neighborhood Association are just a few of the things that the chapter does to endear themselves to the community. In the 1976 annual Community Relations Committee's Report, the Johns Hopkins Student Council stated that "no single group has done more to improve community relations than Tau Epsilon Phi."

The record of achievement in community relations by Phi Eta is well worth emulating by all chapters!

## The Plume

official publication  
of Tau Epsilon Phi  
Fraternity

**Sidney S. Suntag,**  
Managing Editor

Address all communications to THE PLUME of Tau Epsilon Phi, Editorial Office, 3272 Peachtree Road, N.E., Suite 358, Atlanta, Georgia 30305.

*Published Quarterly* by Tau Epsilon Phi Fraternity, Inc., at 3272 Peachtree Road, N.E., Suite 358, Atlanta, Georgia 30305. Mailed regularly to National Chapter members, dues \$15.00 per year, which includes membership of \$5.00 and subscription of \$10.00. Second class postage paid at Atlanta, Ga. Publication number 436260

## COME TO CONVENTION

### '77

Details on page 5

# Alumni Notes



*Int'l President Harris Jacobs*

**Brother Harris Jacobs, Nu (Georgia)** the International President of the Fraternity and a prominent Atlanta attorney was recently accorded a unique honor. He was elected Chairman of the Southeastern Regional Advisory Board of the Anti-Defamation League of B'Nai B'Rith. He had previously served as a member of ADL's Southeastern Executive Committee for a decade. Since 1973, he has served as a member of the League's National Commission.

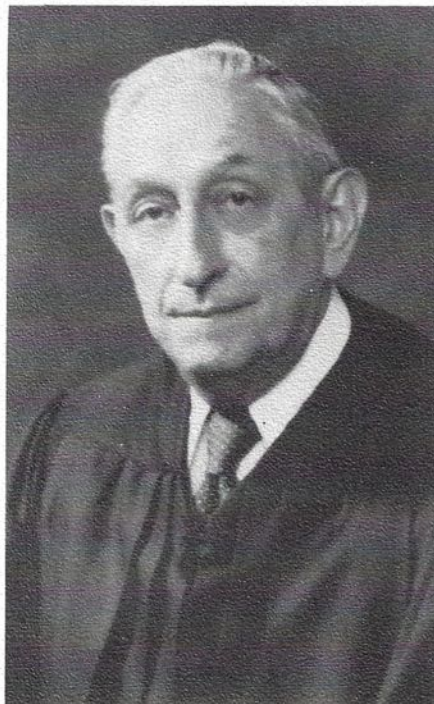
**Brother G. Stephen Mitchell, Jr., Epsilon Deuteron (Florida State)** is assisting in the creation of a new Graduate Studies program at Florida State U. He is the first, and presently only student in the Masters program in Fine Arts administration which will be the first program of its kind in the Southeast.

## Mintzer Passes On

Jack Mintzer, a founder of the Tau Xi Chapter at the University of Miami and long time member of the Grand Council passed away suddenly in his home in Stuart, Fla. in April.

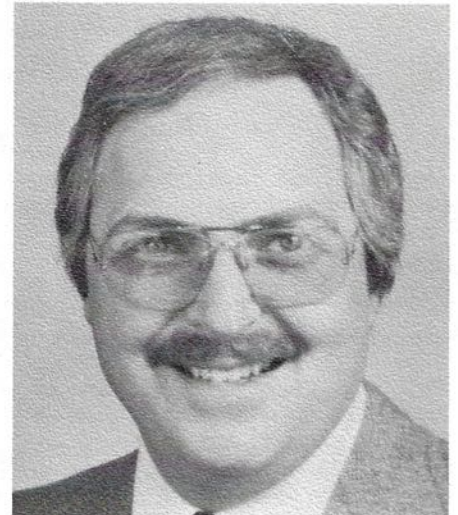
**Brother Roger G. Fein, Tau Upsilon (UCLA)**, a member of the Board of Governors of the Illinois State Bar Association, and Chairman of the Securities Advisory Committee to the Secretary of State of Illinois, on April 9, 1977, was elected to a three year term as a member of the Board of Education, School District No. 29, Northfield, Illinois.

**Brother Ronald A. Young, Alpha Kappa (Adelphi)** has just completed his medical studies at Guadalajara Medical School and will continue post graduate clinical training.



*Judge Max H. Reicher*

**Brother Max H. Reicher, Sigma (Syracuse)** after serving for many years in several judicial posts in the state of Connecticut, has been appointed Judge of the Superior Court of Connecticut by the Governor of the State.



**Brother Robert M. Smiley, Epsilon Gamma (N.Y.U.)**

*has been appointed district agent in the New York/Smiley agency of the National Life Insurance Company of Vermont.*

## CHAPTER ETERNAL

Sol Perlman, Delta  
 Harold Greenblatt, Tau Beta  
 Charles Tobias, Alpha (he wrote all of TEP official songs)  
 Admiral Morton Tendler, Gamma  
 Abe Schwimmer, Phi Epsilon  
 Irvin J. Gershen, Phi  
 Bernard Reisman, Rho  
 Jerry Solomon, Epsilon  
 Jack Mintzer, Tau Xi  
 Judge Arthur L. Joseph, Tau

# Chapter News

## Tau Gamma — U.S.C.

ANOTHER Easter here at Tau Gamma has come and gone but the bunny remained, as Richard Landers found out with a "Who's been sleeping in my bed?!" It seems that little sister Sue Sloate, that Goldilocks groupie of the bed spread set, had made her hutch, as such, therein while he was away on vacation. As it turned out, his main complaint stemmed from, not her staying, but her leaving on resumption of classes.

Others also returned to find pleasant surprises: congratulations to both Mike Bennett and Kevin Berry on their receiving requests for medical school interviews. The house is planning to throw them an "acceptance party," complete with cake served on dissection trays and homemade formaldehyde punch. The finale of the evening, of course, will include everyone rising to propound his probably painfully embarrassing "recommendations" for the candidates and the ceiling opening to shower them with hundreds of acceptance letters.

The end of Easter has also brought the beginning of baseball season, and once again, the TEP team has proven itself Lord of the flies with its bats out of hell. Our first practice, that being today, revealed Mike Perbix not only a powerful pitcher but — (6) packing a Colt 45 — one of our leading hit men. Glenn Fukushima proved inexhaustible in chasing after balls, while Rory Holdstock proved inexhaustible in chasing after Glenn; Ken Menager proved vastly entertained. Finally, come evening, we celebrated our first victory of the season, notwithstanding — as some pointed out — that the first game is not till tomorrow.

Now that summer is approaching, the Tau Gamma Teps are steeling themselves to delve into the decadent East for the Grand Convention. Goodness, the stories we've heard about what goes on back there! Nonetheless,

we have decided to brave it out and have every hope of imparting some (sub) culture to the barbarian Eastern hordes. You'll know us when you see us, brothers — boy, will you know us — and though we won't say as yet exactly how, be assured — the glare will be blinding.

## Phi Eta — Johns Hopkins

AS dormant trees awoke and the spring's greening continued, the TEP House at Johns Hopkins shirked off the shackles of a blustery winter. By a crackling fire, five couples sat at the pledge dance reflecting on a year passed.

From a pledge class of 44 in the spring, we initiated 37 in early May of 1976. Phi Eta officially had 84 members, thus boasting the largest fraternity on campus. Thanks to our numbers, we were able to purchase a much wanted pool table for our house. After re-arranging the furniture and giving the house a face-lift, the atmosphere became more genial and once again it was the center of frat life.

Because of improving attitudes, an enthusiastic brotherhood recruited 33 pledges in one of the most competitive rushes of JHU's history. Over 31% of Hopkins males joined fraternities, and TEP fared better than all others. As usual, we have a very diverse class... we are especially proud of it.

The culmination of Rush traditionally ends at our pledge banquet. This year, 125 people attended our favorite annual event. With 25 Alumni present, we noted many old faces which included three past chancellors; Hartwell Dowling '76, Steve Brown '75 and Andy Fredman '75. Once again, Dennis Stottelmeyer recited his epoch verse called "Phantom 409," and we paid homage to his hero (like we've been doing for 8 years). After all the brothers, Alumni and pledges introduced themselves, we walked outside Peerce's Plantation until we reached the reservoir. Ten classes of brothers and Alumni reminisced about the good old days and hoped for a good future.

The fire died down, and we returned to the present. Our ex-chancellor, Doug Warren, proposed a toast to the new officers; Fred Johnstone, Bill Carlson, Michael L. Nieder, Mark Parkison and Peter Ganas. He wished us happiness, peace of mind and continued success for the future. In closing, I would like to extend the good feelings of Phi Eta to all of you and wish you success and prosperity in all your endeavors.

## Sigma Lambda — Bryant

THINGS have been pretty exciting lately up at dorm one of Bryant College, Smithfield, R.I. This is the home of the Sigma Lambda Chapter of Tau Epsilon Phi. The spring semester has proven beyond a doubt that T.E.P. of Bryant College shall remain to be.

Seven active brothers successfully planned the 38th annual Sno Queen weekend. Sno Queen activities include Fraternity and Sorority skits, Judging for a Sno Queen, a mixer, and a coronation ball. After Sno Queen the brothers were busy again, this time pledging "The Nobody Cares Pledge Class of 1977." (Until Hell Night!!!) The four new Brothers Frank Branca, Greg Owens, Greg Rideout, and John Vincent have added something special to our fraternity, that is enough guys to field an intramural softball team.

This year's Pledge Formal will be held on April 23 at the Dutch Inn in Galilee, R.I. The following day a picnic will be held at one of R.I.'s finer beaches.

Parents Weekend is coming up at Bryant and the Brothers have decided to have a party for their parents after the activities planned by the school.

Because of such a busy semester the brothers have decided to call off the All Coors Party which would have included live music, and 75-100 cases of Coors beer. Next semester we hope to have this unique party skillfully planned.

Finally, the Brothers of Sigma Lambda would like to wish all the Brothers nation-wide a great summer.

## Epsilon Nu — R.I.T.

HELLO Teppers! It is spring quarter here at R.I.T. and all is well. On November 6, 1976, Epsilon Nu, with help from WCMF radio, sponsored a Beer Blast to raise money for Delta Laboratories. \$1100 was raised and donated to them for their progress in environmental research. We all put forth a tremendous effort to make this turn out well. Which it did, and in the interim we had a blast.

We ended fall quarter with the initiation of twelve new brothers which was of great significance to the house.

During winter quarter we added a new dimension to the house with the initiation of six little sisters. They showed their generosity by preparing a gourmet dinner for the brotherhood. This is just one example of what they have contributed to us.

In January 1977, we had elections for

the Executive Board and are: Chancellor — Charles Wolf, Vice-Chancellor — John Gifford, Bursar — Denis Griff, Warden — Don Landwherle, House Manager — Pete Ewen, and Member-at-Large — Thomas Green.

We had a very successful winter rush with four new brothers. The pledge class, as their pledge project, painted the entire basement walls along with a \$40 donation to the brotherhood.

Our three major parties; Halloween, Christmas, and Night in the tropics were as always a smashing success. Our annual TEP Weekend is May 7 and we are all anxiously awaiting to see all alumni and once again be all together.

## Epsilon Eta — Drexel University

EPSILON ETA is anxiously awaiting this Summer's National Convention. As co-sponsor with Sigma Epsilon, Rutgers-Camden, we have been making plans since last year. We will be in charge of the hospitality room and registration and just making people feel at home. We hope to take Brothers to the Bicentennial City, Philadelphia and show them our home town.

This past term Epsilon Eta inducted seven Pledges into the Greek way of life. Many Alumni participated in the old-fashioned induction night that lasted eight hours. Over the term the Pledges put on a show in which they imitated the Brothers. In return they received tomatoes and eggs.

Other Epsilon Eta events were a ski trip to the Pocono Mountains. A full day was spent skiing and falling on the freshly fallen snow that presented some of the best conditions of the Winter.

To end the term our traditional closing affair was held. In order to honor accomplishments that were done over the past term, Teppie Awards were awarded to the lucky (?) Brothers. The combination of food, drink, dates and Alumni provided a great evening for all.

The summer is approaching rapidly and we hope to meet many fellow Brothers and Alumni. Stop by our house in Philadelphia and see Epsilon Eta's style and why TEP's are always Tops!!!

## Rho Delta Rho — I.I.T.

GREETINGS from Chicago. This semester we are very busy, we've just finished remodeling our Sears Tower and now we are renting and leasing

floor space. We have extra space due to our dwindling of our pledge class from 26,000 to 21,000. If you wish to see our lush plush apartments (bouncy foam padding not included) just dial 800 451-1111 that's 800 451-1111.

Our pledges have recently added to the beauty of our chapter by creating stained windows for our house, if your chapter wants anything in your house stained, just call up our pledges, but hurry, call now, they'll be brothers soon. Our little sisters are available too, they will be having a slave auction soon, so call 312 842-3694 for placing your bids, that's 312 842-3694, hurry now, they'll be sisters soon. (They can sew, cook, make noise, and other assorted things.)

Recently our chapter ventured up to the playboy club at Lake Geneva and we skied down the curving slopes there, due to the success of this venture, next year we'll go to Europe.

We are starting a "personals section" in the Plume, look for it in this issue, we'd like to hear from other chapters in this manner too, it may prove interesting!

THE Rho Delta Rho Chapter of Tau Epsilon Phi would like to start a new section in the Plume . . . a personals section. All those interested in this section please submit your personals on a separate sheet to the Plume.

1. Hey Rutgers, is it true that New Jersey is the armpit of the USA?
2. Dear Florida, thank you for our new bouncing baby pledge.
3. Dear Drake, next time make sure that you send someone with more meat on them, thank you.
4. Dear Tulane, cashed any Czechs lately.
5. Dear writer to Tulane, that joke was worrible.
6. I wish I was in Atlanta where it is warm all winter.
7. Dear Epsilon Tau, we'll take 1 large cheese, 1 medium sausage with mushrooms, hold the Anchovies, P.S. John Green will pay!
8. Dear Sid, is it true you want to pledge Rho Delta Rho?



*Tau Alpha Pledge Class*

9. Sigma Epsilon, Julie Christie wants your chancellor.
10. Is V.D. Amen a curable disease?
11. Jay Comess is married and has three kids so don't let him fool you. He also likes 12 year old girls.
12. Dear Sid, is it true that you have a tattoo on the dark side of your moon?
13. There is no number 13.
14. Actually Jay Comess has 1 child and three wives, but he still likes 12 year old girls.
15. Hey Phi Mu, (U. Hartford), we out in the midwest are glad to hear that you are not dead, if you guys would like to have a brew out here we're Rho Delta Rho, 3330 S. Michigan, Chicago, we'll see ya at convention city.
16. Dear Epsilon Tau (Bradley), us Rho Deltas have a psychotic Armenian, could you take care of him, he needs a good home! Could you take care of Jay Comess for us too, . . . , thanks.

## Tau Alpha — University of Florida

YES, the reports are true. It snowed in Florida! We had almost 1/8 inch of packable, throwable snow. After dinner we had the largest and, for that matter, the only snowball fight in the chapter's recorded history.

After the spring thaw, the collective mind of Tau Alpha turned to service. On Saturday February 26, the brothers turned out for a carnival in the TEP basement given for the residents of nearby Sunland Training Center.

About forty of the mentally handicapped residents participated in the three hour event. Booths were manned by brothers and little sisters and prizes were donated by area merchants.

When the festivities were over, everyone adjourned upstairs for light refreshments provided by our world famous cook, Ernest.

# Tau Epsilon Phi 1977 Biennial International Convention

Concurrently with Delta Phi Epsilon Sorority  
August 21 - 25, 1977

Cherry Hill Hyatt House, Cherry Hill, N.J. (7 miles from Philadelphia, Pa.)

## PROGRAM

SUNDAY, August 21	Registration 1 P.M. to 6 P.M. 7 P.M. Cocktail party and dinner Opening business session
MONDAY, August 22	Morning business session Luncheon Afternoon free time Awards Banquet Dancing & entertainment
TUESDAY, August 23	Morning business session Luncheon Afternoon — School of Fraternalism Awards Banquet Dancing & entertainment
WEDNESDAY, August 24	Morning business session Luncheon Afternoon free time Gala Formal Installation Banquet Dancing & entertainment
THURSDAY, August 25	Business session, if needed Farewell luncheon Adjournment sine die

(Continental breakfast is served each morning)

**COMPLETE PACKAGE — THREE IN A ROOM — \$160.00 per person  
TWO IN A ROOM — \$185.00 per person**

INDIVIDUAL MEAL FEES:	SUNDAY NIGHT COCKTAIL PARTY & DINNER .....	— \$25.00 ea.
	MONDAY LUNCHEON .....	— \$ 7.50 ea.
	MONDAY NIGHT BANQUET .....	— \$12.00 ea.
	TUESDAY LUNCHEON .....	— \$ 6.50 ea.
	TUESDAY NIGHT BANQUET .....	— \$13.00 ea.
	WEDNESDAY LUNCHEON .....	— \$ 6.50 ea.
	WEDNESDAY NIGHT GALA BANQUET .....	— \$15.00 ea.
	THURSDAY LUNCHEON .....	— \$ 7.50 ea.

(all taxes and tips are included in price)

TRAVEL TO CHERRY HILL, N.J.: By auto the Hotel is just off the N.J. Turnpike.  
By air: The Philadelphia Airport — limousine service to Hotel.

CONVENTION (If you are the official "PAID" delegate of your chapter, do NOT fill this form out —  
RESERVATIONS YOUR RESERVATION IS MADE BY THE CENTRAL OFFICE)

NAME \_\_\_\_\_ CHAPTER \_\_\_\_\_

ADDRESS \_\_\_\_\_

CHECK ONE:  \$185.00 per person, twin bedroom, complete package  
 \$160.00 per person, triple room, complete package

(A deposit of \$25.00 per reservation is required, and will be credited to your bill. DEPOSITS MUST BE MADE BEFORE AUGUST 5, 1977)

If you wish to attend specific meal functions only, please designate same \_\_\_\_\_

\_\_\_\_\_ Payment for meal function must be made prior to August 21, 1977.

I herewith enclose check for \$25.00. Payable to Tau Epsilon Phi Fraternity and mail to TEP Headquarters, 3272 Peachtree Rd., N.E., Atlanta, Ga. 30305. (If you wish to make reservations for any meal function, please submit fee before August 21st.)

ROOMMATE PREFERENCE, IF ANY \_\_\_\_\_

THE PLUME  
of  
Tau Epsilon Phi Fraternity

Postmaster:  
If undeliverable, please send  
notice on Form No. 3579 to  
Tau Epsilon Phi Fraternity  
3272 Peachtree Road N.E. Suite 358  
Atlanta, Ga. 30305

SECOND CLASS POSTAGE PAID AT ATLANTA, GEORGIA

# PROFESSIONAL DIRECTORY

**Brothers who are members of the National Alumni Chapter, or are Life Members may obtain listing in this Professional Directory by the payment of an additional 20 dollars. This fee entitles the brother to a listing according to profession or business in four issues of the "PLUME." If you desire a listing, kindly communicate with the National office.**

## ACCOUNTANT

FLORIDA  
Richard I Behren, Tau Alpha 360  
7220 N.W. 36th St.  
Miami 33166

NEW YORK  
Mark Ringel, Epsilon Mu 221  
95 Sedgewick Ave.  
Yonkers

## ATTORNEYS

CALIFORNIA  
I. Donald Weissman, Phi Xi 55  
1545 Wilshire Blvd., Suite 800  
Los Angeles 90017

CONNECTICUT  
Philip R. Shiff, Iota 30  
900 Chapel St.  
New Haven 06505

FLORIDA  
Sanford Freed, Tau Alpha 310  
19 W. Flagler St., Suite 825  
Miami 33130

Martin E. Segal, Tau Alpha 655  
150 S.E. 2nd Ave. Suite 300  
Miami 33131

GEORGIA  
Harris Jacobs, Nu 198  
707 Healey Bldg.  
Atlanta 30303

ILLINOIS  
Gilbert W. Gordon, Epsilon Tau 93  
228 N. LaSalle St.  
Chicago 60601

MISSOURI  
Theodore S. Schechler, Psi  
225 S. Meramer, Suite 426T  
St. Louis 63105

NEW YORK  
Peter H. Brandt, Epsilon 86  
Empire State Bldg.  
New York 10463

Sanders D. Heller, Tau Delta  
23 Main St., Gouverneur 13642

Stanley I. Schachter, Alpha  
Matalon & Schachter  
276 5th Ave., New York

PENNSYLVANIA  
Harry D. Sporkin, Tau 11  
300 Penn Sq. Bldg.  
Philadelphia

VIRGINIA  
Lee Kelberg, Zeta Lambda Phi  
Kelberg and Childress  
533 Newtown Rd., Suite 101  
Virginia Beach 23462

## AUTOMOBILE DEALERS

MASSACHUSETTS  
Bert Libon, Tau Pi 66  
Libon VW-Porsche Audi  
168 Western Ave.  
884 Commonwealth Ave.  
Boston

## AUTO SALES & LEASING

Elliott L. Packer, Tau Beta 755  
Al Packer Ford and Lincoln-Mercury  
Baltimore, Washington,  
and W. Palm Bch., Fla.

## AUTO SUPPLIES

NEW YORK  
Martin J. Brick, Epsilon Mu 205  
30-09 35th Ave.  
L. I., N. Y. 11106

## BROKERS

FLORIDA  
Herbert Potash  
Harris Upham & Co., Inc.  
Miami 33154  
(Stock Broker)

Samuel M. Wasserman, Tau Beta 514  
Sr. V.P. & Resident Manager  
Bache Halsey Stuart Inc.  
2660 East Sunrise Blvd.  
Ft. Lauderdale 33304

GEORGIA  
Harvey P. Cook, Nu  
Merrill Lynch  
Atlanta

## BUILDERS AND CONTRACTORS

FLORIDA  
Stanley Tate, Tau Alpha 233  
Stanley Tate Builders, Inc.  
915 N.E. 125th St.  
No. Miami 33161

GEORGIA  
Henry Hirsch, Phi 311  
Engineered Concepts, Inc.  
2814 New Spring Rd., Suite 305  
Atlanta 30339

NEW YORK  
Samuel J. Lefrak, Tau Beta  
The Lefrak Organization  
97-77 Queens Blvd., Forest Hills

## COMPUTERS

NEW YORK  
Morris Balamut, Epsilon Lambda 286  
P. O. Box 864  
Jamaica 11431  
(Micro Computer Based Systems for  
Business, Education, and  
Personal Pleasure)

## DECORATOR CONTRACTOR

NEW JERSEY  
Arthur Sariat, Kappa 203  
76 Roosevelt Sq.  
Englewood 07631  
(Paper Hanger)

## ENGINEERS

FLORIDA  
Michael S. Neijna, Tau Alpha 673  
7180 S.W. 114th Terrace  
Miami 33156  
(Consulting Engineer)

NEW JERSEY  
Ernest E. Fricks, Gamma Sigma 40  
Environmental Reports  
P. O. Box 663  
Bound Brook 08805

## FINANCIAL PLANNING

TEXAS  
Phillip D. Perlo, CLU, Tau Beta 522  
Assoc. in Financial Planning  
2100 W. Loop South #1300  
Houston 77027

## FOOD BROKER

MASSACHUSETTS  
Richard E. Halpern, Tau Zeta 294  
Halpern Bros.  
167 Corey Road  
Brookline 02146

## HOUSING DEVELOPER

MARYLAND  
Jack H. Pechter, Tau Beta 548  
3405 Birch Hollow Rd.  
Baltimore 21208

## INSURANCE

CANADA  
Bernard Freedman, Tau Iota 130  
Box 518, St. John  
New Brunswick

MASSACHUSETTS  
Fred Tobman, Kappa Zeta Phi  
117 Washington St.  
Quincy 02169

## RHODE ISLAND

Marvin William Lax, Sigma Lambda  
84 Blarsdell Ave.  
Pawtucket 02906  
401-274-9100 (Bus.)  
401-722-3516 (Res.)  
(Financial Planning Consultant  
Personal and Business Insurance)

## INVESTMENT MANAGEMENT ADVISOR

NEW YORK  
Stewart W. Rosen, Omega 473  
Sanford C. Bernstein & Co., Inc.  
717 Fifth Avenue

## MANAGEMENT CONSULTANTS

ILLINOIS  
Kenneth J. Eaton, Rho Delta Rho 79A  
612 N. Michigan Ave.  
Chicago 60611

## MANUFACTURERS

NEW YORK  
Donald Moody, Gamma 633  
WEMCO Casting, Inc.  
176 Central Ave.  
Farmingdale 11735  
(Casting & Machining)

## PHYSICIANS

INTERNAL MEDICINE  
FLORIDA  
Bruce L. Bigman, M.D., Tau Zeta 341  
230 East New York Ave.  
DeLand 32720

## OPHTHALMOLOGY

NEW YORK  
Dr. Donald A. Morris, Alpha 449  
104 E. 40th St.  
New York 10016

Dr. Robert M. Sturman, Alpha  
8 E. 84 St., New York  
(Diseases of the Eye)

## PRINTERS

CALIFORNIA  
Michael R. LeVine, Tau Gamma 544  
8646 W. Pico Blvd.  
Los Angeles 90035

## REAL ESTATE

FLORIDA  
Arthur B. Leibovitz, TA 241  
232A Royal Palm Way  
Palm Beach 33480  
(Investments)

## SALES

MARYLAND  
Samuel Klammer, Tau Beta 654  
Boots & Bitches, Inc. & Shoe Fair  
18 Park Ave.  
Baltimore 21201

NEW YORK  
Richard Lewis, Sigma 239  
Newmark & Lewis  
Hicksville 11802  
Appliances & TV's

PENNSYLVANIA  
Gary Kleiman, Zeta Lambda Phi 540  
Local Sales Manager, WYSP Radio  
Philadelphia

## SCRAP METAL

NORTH CAROLINA  
Seymour Brown, Omega 101  
Goldsboro Iron & Metal Co.  
Goldsboro 27530

## SERVICE STATIONS

FLORIDA  
Harvey Goldenberg, Tau Xi 374  
N.E. Corner 441 & Taft St.  
Hollywood 33024  
(CIRCO)

## SUMMER CAMP

NORTH CAROLINA  
Martin Levine, Tau Alpha 139  
Camp Pinewood for Boys & Girls  
Hendersonville, N. C. 28739

## TRAVEL

CALIFORNIA  
Ralph H. Seligman, Tau Upsilon 204  
Holiday Tours, Inc.  
505 Geary St.  
San Francisco 94102  
(California & Hawaii Tours)

## WHOLESALE JEWELRY

ILLINOIS  
Jeff Spreckman, Psi 755  
5 N. Wabash  
Chicago 60602