

SUMMER NEWS 1961

The

PLUME

OF TAU EPSILON PHI



TEP
CONSUL
JOE
GERSON

The Creed of Tau Epsilon Phi

TO LIVE in the light of friendship—to judge our fellows not by their rank nor wealth but by their worth as men—to hold eternally before us the memory of those whom we have loved and lost—to hold forth in the solidarity of our brotherhood the nobility of action which will make for the preservation of our highest and worthiest aim—and thus be true to the ideal of friendship—

TO WALK in the path of chivalry—to be honorable to all men and defend that honor—to fulfill our given pledge at all times—to be true to the precepts of knighthood and win the love and care of the women of our dreams—and thus be true to the ideal of chivalry—

TO SERVE for the love of service—to give unselfishly that which we may have to offer—to do voluntarily that which must be done—to revere God and to strive in His worship at all times—and thus be true to the ideal of service—

TO PRACTICE each day friendship—chivalry—service—thus keeping true to these—the three ideals—of the founders of our fraternity—this is the Creed of Tau Epsilon Phi.

Active Chapter Roll

Alpha Chapter
Gamma Chapter
Delta Chapter
Eta Chapter
Theta Chapter
Kappa Chapter
Mu Chapter
Nu Chapter
Xi Chapter
Omicron Chapter
Rho Chapter
Sigma Chapter
Chi Chapter
Psi Chapter
Omega Chapter
Tau Alpha Chapter
Tau Beta Chapter
Tau Gamma Chapter
Tau Delta Chapter
Tau Zeta Chapter
Tau Theta Chapter
Tau Iota Chapter
Tau Lambda Chapter
Tau Mu Chapter
Tau Xi Chapter
Tau Pi Chapter
Tau Rho Chapter
Tau Psi Chapter
Rho Delta Rho Chapter
Tau Omega Chapter
Epsilon Gamma Chapter
Epsilon Delta Chapter
Zeta Lambda Phi Chapter
Delta Upsilon Chapter
Epsilon Deuteron Chapter
Epsilon Eta Chapter
Epsilon Iota Chapter
Epsilon Lambda Chapter
Epsilon Rho Chapter
Epsilon Theta Chapter
Phi Lambda Chapter
Epsilon Mu Chapter
Epsilon Nu Chapter
Phi Gamma
Alpha Omega
Epsilon Kappa
Phi Eta
Alpha Beta
Sigma Phi
Epsilon Pi
Epsilon Xi
Kappa Zeta Phi
COLONIES:
Epsilon Tau

COLUMBIA UNIVERSITY
NEW YORK UNIVERSITY
CORNELL UNIVERSITY
TUFTS UNIVERSITY
BOSTON UNIVERSITY
UNIVERSITY OF VERMONT
EMORY UNIVERSITY
UNIVERSITY OF GEORGIA
MASSACHUSETTS INSTITUTE OF TECHNOLOGY
MCGILL UNIVERSITY
UNIVERSITY OF PENNSYLVANIA
SYRACUSE UNIVERSITY
UNIVERSITY OF MICHIGAN
UNIVERSITY OF ILLINOIS
UNIVERSITY OF NORTH CAROLINA
UNIVERSITY OF FLORIDA
UNIVERSITY OF MARYLAND
UNIVERSITY OF SOUTHERN CALIFORNIA
OHIO STATE UNIVERSITY
UNIVERSITY OF MAINE
GEORGE WASHINGTON UNIVERSITY
DALHOUSIE UNIVERSITY
PURDUE UNIVERSITY
UNIVERSITY OF CONNECTICUT
UNIVERSITY OF MIAMI (Fla.)
UNIVERSITY OF MASSACHUSETTS
FLORIDA SOUTHERN COLLEGE
NEWARK COLLEGE OF ENGINEERING
ILLINOIS INSTITUTE OF TECHNOLOGY
UNIVERSITY OF RHODE ISLAND
NEW YORK UNIVERSITY, HEIGHTS
DARTMOUTH COLLEGE
TEMPLE UNIVERSITY
DUKE UNIVERSITY
FLORIDA STATE UNIVERSITY
DREXEL INSTITUTE OF TECHNOLOGY
RENSSELAER POLYTECHNIC INSTITUTE
COLLEGE OF CITY OF NEW YORK
BROOKLYN COLLEGE
QUEENS COLLEGE
LONG ISLAND UNIVERSITY
HUNTER COLLEGE
ROCHESTER INSTITUTE OF TECHNOLOGY
WAYNE STATE U.
BARUCH COL. C.C.N.Y.
TULANE UNIVERSITY
JOHNS HOPKINS UNIVERSITY
AMERICAN UNIVERSITY
C. W. POST COLLEGE
MARIETTA COLLEGE
CLARK UNIVERSITY
NORTHEASTERN UNIVERSITY
BRADLEY UNIVERSITY

627 W. 115 St. New York 25
7 Washington Pl., N. Y. C.
306 Highland Road, Ithaca, N. Y.
9 Teele Ave., Somerville 44, Mass., c/o Tufts Univ.
207 Bay State Road, Boston, Mass.
389 College St., Burlington, Vt.
P.O. Box 666, Emory U., Atlanta, Ga.
150 Baxter St., Athens, Ga.
253 Commonwealth Ave., Boston, Mass.
3641 Oxenden Ave., Montreal, P.Q., Can.
3634 Chestnut St., Philadelphia, Pa.
320 Euclid Ave., Syracuse, N. Y.
915 Oakland Ave., Ann Arbor, Mich.
105 East Armory, Champaign, Ill.
216 E. Rosemary St., Chapel Hill, N. C.
P.O. Box 3528, University Station, Gainesville, Fla.
4607 Knox Rd., College Park, Md.
745 W. 28th St., Los Angeles, Cal.
1968 Indianola Ave., Columbus 1, Ohio
380 College Ave., U. of Maine, Orono, Maine
2006 G. St. N.W., Washington, D.C.
286 South St., Halifax, N. S.
136 Littleton St., West Lafayette, Indiana
University of Connecticut, Storrs, Conn.
1541 Brescia Ave., Coral Gables, Fla.
418 N. Pleasant St., Amherst, Mass.
127 Lake Hollingsworth, Lakeland, Florida
142 Warren St., Newark, N. J.
3330 S. Michigan Ave., Chicago 16, Ill.
22 Campus Ave., University of Rhode Island, Kingston, R. I.
2229 Andrews Ave., Bronx, N. Y.
15 Webster Ave., Hanover, N. H.
2002 N. Broad St., Philadelphia, Pa.
Box 4741, Duke Station, Durham, N. C.
Box 3071, F.S.U., Tallahassee, Fla.
208 N. 35th St., Philadelphia, Penna.
57 Second St., Troy, N. Y.
7 Washington Pl., N. Y. C.
900 E. 21 St., Brooklyn, N. Y.
41-20 162nd St., Flushing, L. I., N. Y.
350 Livingston St., Brooklyn, N. Y.
c/o Hunter College, Bronx, N. Y.
65 Plymouth Ave., South, Rochester, N. Y.
5050 Cass Ave., Wayne State U., Detroit 2, Mich.
25 W. 23 St., N. Y. C.
7113 Freret St., New Orleans, La.
3124 Guilford Ave., Baltimore, Md.
Box 651, American University, Washington, D. C.
P.O. Box 247, C. W. Post, Greenvale, N. Y.
106 N. 7 St., Marietta, Ohio
Box 821, Worcester, Mass.
Northeastern U., Boston, Mass.
1625 W. Main, Peoria, Ill.

THE PLUME OF TAU EPSILON PHI

VOLUME XLIV

SUMMER NEWS 1961

NUMBER 1

THE PLUME

Is the official publication of Tau Epsilon Phi Fraternity.

Stuart Smith, Editor

Sidney S. Suntag, Managing Editor

Jack A. King, Publications Chairman

Address all communications to THE PLUME of Tau Epsilon Phi, Editorial Office, 130 W. 42nd St., New York 36, N. Y.

Published quarterly until further notice by Tau Epsilon Phi Fraternity, Inc., at Leland Publishers, Inc., The Fraternity Press, 2642 University Ave., St. Paul 14, Minn., official fraternity publisher. Editorial Offices, 130 W. 42nd St., New York 36, N. Y. Mailed regularly to National Chapter members, dues \$5.00 per year, which includes membership of \$2.00 and subscription of \$3.00. Second class postage paid at St. Paul, Minnesota.

ON THE COVER

The man on the front of this issue of the PLUME is one familiar to all TEPmen. He's new Consul Joe Gerson of Atlanta, Georgia. Joe's constant good humor and warm friendship causes all to believe that his two-year term of office, now beginning, will be a good era for the fraternity. Brother Gerson, a top insurance broker, is an alumnus of Nu chapter at the University of Georgia. The stories and photographs of Brother Gerson's election and Nu's reception of the Chapter of Merit Trophy are included in the extensive convention report that follows. Cover Photograph by Stuart Smith.

PICTURE CREDITS

11—Courtesy the Telegram Gazette; 16—U. S. Army Photograph by Oscar Porter, the Pentagon; 22—Stuart Smith.

Summer, 1961

MY FINAL GOOD AND WELFARE

by Alan J. Gardner

Ed. Note: The following editorial was submitted late last semester as the regular article for Nu chapter. But the quality and feeling in it have prompted the editors to

hold for this editorial spot. Brother Gardner, for three years Georgia's contributor for the PLUME, was responsible for his chapter's winning the PLUME trophy for three years straight.

Now that the time has come for my final Good and Welfare, I hardly know where to begin. It's not something that I made up in an hour or so, but rather something I have lived for the past four years.

I suppose the only place to begin is Rush Week of my Freshman year. New to the South, I hoped to, and finally did, make fast friends with a group of boys who were to become my pledge brothers. To say we were close to each other would hardly be even close to the truth. Everything we did, we did together, including the trip we all took to New Orleans that freshman year. I shall never forget how I sat between two southerners in the back seat as they advised me not to talk with my Yankee accent as we rode through Mississippi.

I see the TEP mascots, our two goats, and remember how they once wandered off and the headlines in the Athens papers screamed "Who Has the TEP Goat?"

I recall the convention up in Grossinger's. I was proud and happy when, for the third straight year, Nu chapter won the runner-up as Chapter of Merit (Ed. Note: This year Nu won the trophy itself.) and I was happy as I accepted the PLUME trophy that I, in a small way, was responsible for bringing to my chapter.

As I look back, I find that fraternity added so much to my college life than I could ever express and so I wanted to take this opportunity to thank the brothers of the chapter who made it all possible.

But retrogressing is not right. The hope and real story lies in the future. The pledges and new brothers are the ones who will be the leaders, the ones who will learn the meanings of true friendships in the years to come. In June, the five of our original pledge class will be gone and within a year, probably forgotten. This is the way it must be. A chapter cannot look to the past for leadership, advice or guidance. The decisions are those of the current leaders to make and the future of the fraternity depends on them.

So now, as June approaches, the last milli-second is about to run out on my college life. As a grandfather clock, with its inner workings never to be wound again, as its final second is about to be spent, I say thank you, Tau Epsilon Phi, and I become silent.

JOE GERSON ELECTED CONSUL



The choice was unanimous when the delegates to the 1961 convention elected Joseph H. Gerson, Nu, as Consul of Tau Epsilon Phi fraternity. After having served as an officer of the fraternity for the past several years, Brother Gerson, an insurance broker from Atlanta, Georgia, was raised to the top spot.

Consul Gerson has long been known as a warm, friendly fraternity man with an ever present sense of humor. His manner of leadership is marked with an air of informality. With a great deal of popularity among the undergraduates as well as the alumni, his term promises to be highly successful.

The installation of new officers was led by Brother Leon D. Crestohl, Montreal, Canada, a member of the Canadian parliament. The event was part of the final evening's program at the Concord convention. A formal banquet preceded the ceremony.

The evening was marked by the informality that is the trademark of

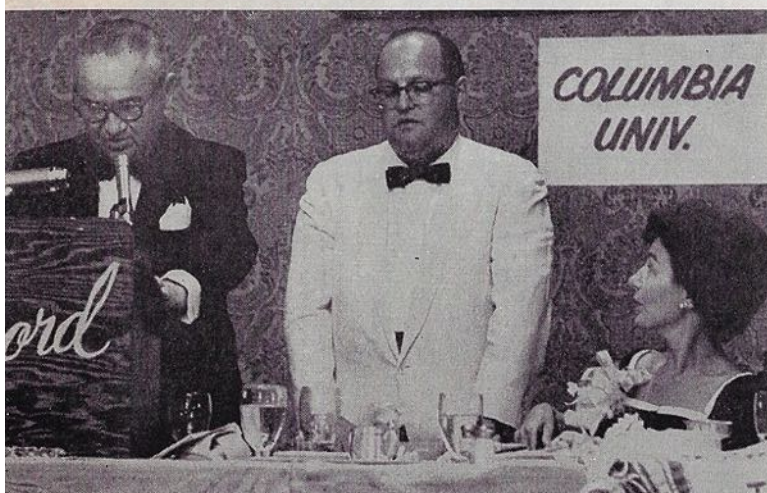
PLUME

photographed for the PLUME by Stuart Smith



Opposite page, top, Consul Joe Gerson is visibly moved as a tribute to him is read by Nu's Chancellor Cohen. A statement from the Governor of Georgia, a friend of Brother Gerson's, was read. Mrs. Gerson is at the right. Below, the new Grand Council is installed by Bro. Leon Crestohl, left.

Left, a group of undergraduates come to the head table to serenade the fraternity's new first lady. The spontaneous demonstration was made up of men from several chapters. Seated at the head table, left to right, are Consul and Mrs. Joe Gerson, Outgoing Consul and Mrs. Louis L. Manes and Mrs. Mendel Romm, Jr.



the fraternity's new Consul. Groups roamed from table to table serenading the wives and sweethearts and the huge room was filled with an air of celebration.

Among the other officers installed with Brother Gerson were First Vice Consul Hon. E. J. Evans, Durham, North Carolina, Second Vice Consul Mendel Romm, Atlanta, Georgia, Quaestor Jack King, Philadelphia, Pennsylvania and Tribune Erwin Cooper, Boston, Massachusetts.

Summer, 1961

Hon. Leon D. Crestohl, M.P., Q.C., installs the fraternity's new Consul, Joseph H. Gerson, center. The wife of the Atlanta, Ga., leader looks on at the right.

Right, Brother and Mrs. Gerson and Quaestor Jack King, center, join a group of undergraduates in song before the Installation Banquet begins.



THE SOCIAL SIDE

In a convention set in the lavish surroundings of the Catskill Mountains' Concord Hotel, the social activities played a prominent part.

Nothing about the Concord Hotel was small. With the mornings devoted to meetings, the social activities began at noon. Most of the conventioners took advantage of the bright, warm days beside the mammoth pool and lounge area. Sports of all sorts were open to the TEP-men and they took full advantage of them.

Each day, in the late afternoon, the outdoor activity shifted to the large, white main building. A cocktail party preceded nearly all of the dinners and after the speakers, vaudeville shows were presented in the night club, an extremely large, tiered room. Dancing to two orchestras held some of the couples while others adjourned to the lounge for music and conversation.

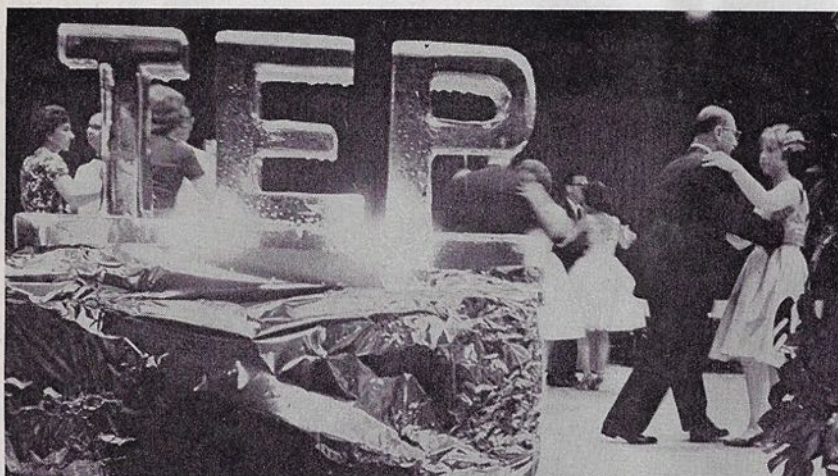
The convention opened on Sunday evening with a Champagne Cocktail Party before dinner. Sponsored by the Grand Council, it was used as a means for all those attending to get acquainted.

On the second evening, another cocktail party was given for the TEP-men by Brother Samuel Lefrak, Chairman of the Awards Committee. The dinner that night was devoted to Undergraduate Awards and Brother Lefrak acted as Toastmaster.

The final night of the convention featured a formal banquet for the installation of officers. Preceding that affair was a sumptuous party given by the Concord Hotel. Sculptured ice topped tables heavy with all sorts of hors d'oeuvres. An orchestra played for dancing until the time came for all to adjourn to the dining room.

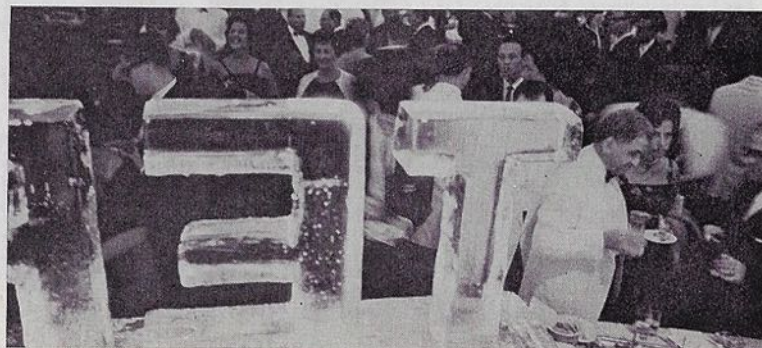
At the right, a huge ice swan presides over the buffet as Mrs. Frederic Schwartz, second from left, talks with the wife of another alumnus. At the table, Brother Charles Lerner, Delta, samples the cuisine.





Above left, ice carved letters decorate the stage at the cocktail party given on the final night of the convention. A small orchestra provided music for dancing at the lavish affair and many of the TEPmen took to the floor. At the far left are Brother and Mrs. Erwin Cooper, Boston, Massachusetts. Across the stage at the far right is Brother Arnold Cohen, Chicago, Illinois. Above right, Brother Sam Lefrak, host at a party before the Undergraduate Awards Dinner, is given a "Teps Are Tops" pin by Past Consul I. Heiman. Following this affair, Brother Lefrak chaired the program in the dining room. There undergraduate awards were made to those chapters and individuals still in school who had been outstanding during the previous year. At the left, alumni get together at the Lefrak party. Left to right, Consul Joe Gerson, Sey Weisberg, Mrs. Louis L. Manes and Arnold Cohen. All of the men are members of the Grand Council. The four banquets were each devoted to a separate event.

At the right, under the gleaming ice letters of the fraternity, the conventioners enjoy the final pre-dinner party of the four-day gathering. An enormous buffet was set before the TEPmen by the host for the evening, the Concord Hotel, and here it is tried by Brother Meyer Feldman, Boston, Massachusetts, member of the Grand Council. Several hundred alumni, wives and undergraduates journeyed to the Catskill Mountain resort north of New York City. The convention opened on Sunday, August 27th, and closed on Thursday, the 31st, at noon. Miami, Florida, has been tentatively set as the next convention site in 1963.



1961 CONVENTION REPORT



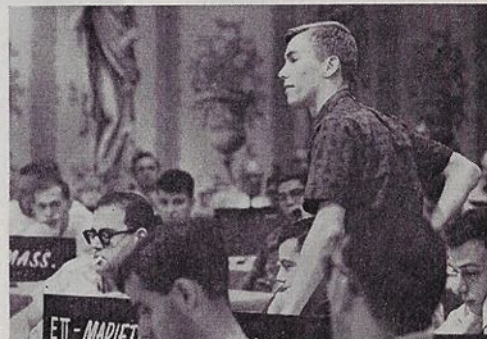
Right, In a deserted meeting room, long after midnight, the resolutions committee, headed by Brother Arnold Glenn, Tau Delta, meets to complete its business. Committees conducted all their business far into the night. Below, Quaestor Jack King, Zeta Lambda Phi,

delivers his report to the convention delegates. He was one of several fraternity officials who appeared during the three morning sessions.

Above, Past Consul I. Heiman, Nu, reads a tribute to Brother Israel "Doc" Schwartz, Alpha Founder. The fraternity gave its Founder a standing ovation at the end. Below, Brother Erwin Cooper, Tau Zeta, speaks to the delegates in debate. Grand Council members Sanders Heller, left, and Joe



Gerson, center, pay close attention in one of the serious moments on the floor.



Above, the delegate from Epsilon Pi, Marietta University, registers an opinion. Opposite page, top, Consul Joe Gerson, seated left, confers with delegates from Epsilon Delta, Dartmouth College, during one of the sessions. Opposite page, bottom, alumni follow the proceedings. Left to right, Dr. A. I. Cohen, Stanley Jacobs, Matthew Helman, G. Feldman and I. Heiman.



FROM THE FLOOR OF THE CONVENTION

The sun streamed through the drapes behind the rostrum on Monday morning when the 1961 convention was called to order. Black and white standards lined the tables in neat rows. Chapter and alumni delegates dressed in shorts, sport shirts and sandals filed into their places and the meetings began under the leadership of Outgoing Grand Chancellor Ben Kaplan, Sigma.

The first order of business came and went with the election of convention officers. Leonard Lauter, Phi, was named Grand Chancellor, Ben Ungerman, Sigma, Grand Vice-

Chancellor, Zeta Lambda Phi, Grand Scribe, Leo Schlossberg, Rho, Grand Chaplain, Larry Gottlieb, Epsilon Lambda, Grand Warden, and Sanders Heller, Tau Delta, Parliamentarian. Among the reports that followed were those of "Doc" Schwartz and the Endowment Fund, Quaestor Jack King, I. Heiman and the Scholarship and Student Aid Fund and Executive Secretary Sidney Suntag.

The lights burned late in the meeting rooms that night. All of the committees but one completed their work in gatherings that started at midnight and went past three a.m.

On the second morning, the business was devoted to a series of panel discussions on fraternity practices. As usual, delegates from each of the fraternity's chapters and colonies participated while alumni from the Grand Council and chartered clubs observed from the back of the room.

The final day of meetings began close to its intended hour with a full slate of work on the agenda. Legislation and resolutions were passed after some interesting and colorful debates, the next convention site was chosen and the new officers of the organization were elected.



TEP ANNUAL AWARDS ANNOUNCED



Top left, The dining room at the Concord Hotel is filled with TEP conventioners gathered for the Man of the Year Awards Banquet. Top right, Sylvan Meyer, Omega, Man of the Year for 1961, speaks to the convention in accepting his award. He was named for his achievements as a leading journalist and editor in Georgia. True to his profession, he left immediately after the banquet to return home to cover the integration of Atlanta schools. Above, As Past Consul Lou Manes listens, new Field Secretary Ron Drogin, Tau Zeta, is presented to the convention by Quaestor Jack King. Brother Drogin received an Extra-Curricular Key at the convention.

Two evening banquets were devoted to the giving of awards at the fraternity's recent convention. The first saw the recognition of undergraduate achievements and on the following night, Tau Epsilon Phi's outstanding alumni were named.

Samuel J. Lefrak, Tau Beta, acted as toastmaster for the Undergraduate Awards Banquet, assisted by Alvin Saul, Nu, and Jack King, Zeta Lambda Phi. The program began with the giving of individual keys to those students who had shown outstanding abilities in scholarship or extra-curricular work. The fraternity's top scholars included Max Cohen, Alpha, Donald Gentner, Epsilon Iota, Elliot Barkan, Epsilon Theta, Stephen Feldman, Tau Gamma and Scott Norman, Rho Delta Rho.

Those named as winners of the Extra-Curricular Keys were Jerry Sherman, Tau Gamma, Myron Mensh, Mu, Ron Drogin, Tau Zeta and newly installed Field Secretary, George Greenberg, Alpha and Paul Strudler, Epsilon Iota. Quaestor Jack King presented the medals.

The meat of the evening's program was the long awaited announcements of the chapter award winners. Award Committee Chairman Samuel J. Lefrak gave the trophies to the winners.

The fraternity's top cup, the Irving Golember Chapter of Merit Trophy, went to Nu chapter at the University of Georgia. Runners-up

were Tau Gamma, University of Southern California, and Theta, Boston University.

The Samuel J. Lefrak Campus Achievement Trophy was given to Tau Gamma at U. S. C. Three honorable mentions were awarded to Zeta Lambda Phi, Temple, Tau Beta, Maryland, and Epsilon Theta, Queens College.

The chapter deemed most efficient was Tau Theta, George Washington University. For their efforts they were given the Charles Dreisen Chapter Efficiency Trophy with Tau Zeta, Maine, and Epsilon Theta, Queens, named runners-up.

Phi Eta at Johns Hopkins University won the John Kleinberger Scholarship Cup. Following them were two chapters, Eta, Tufts, and Tau Delta, Ohio State.

The Louis Lebenthal Chapter Improvement Trophy went to Tau Xi, University of Miami. The close competition for this award was noted in the granting of three runner-up spots. They were Delta, Cornell, Chi, Michigan, and Phi Gamma, Wayne State University.

For its outstanding community service, Epsilon Lambda, C.C.N.Y., was given the Louis Fein Grand Chaplain's Trophy. Following them were Alpha Beta, American University, and Zeta Lambda Phi, Temple.

The Charles Tobias Plume Trophy, given to that chapter which submits the articles of highest quality

PLUME



to the PLUME, was given for the third time to Nu Chapter at the University of Georgia.

On the following evening the alumni were given their traditional recognition. For this occasion, First Vice-Consul E. J. "Mutt" Evans, Mayor of Durham, North Carolina, acted as Master of Ceremonies. The first awards given were the Michael C. C. Lillienfeld Distinguished Alumnus Awards. The scrolls which recognized outstanding service to the fraternity by the recipients went to two men. The first, Brother Howard Simon, Delta, was unable to attend the convention to accept the scroll given for his generous help and guidance in the rebuilding of Delta chapter after the disastrous fire of two years ago.

The second Lillienfeld Award went to Brother Erwin Cooper. It was presented to him by Brother A. I. Cohen, Lambda, a fellow Boston member of the Grand Council. Cooper, an alumnus of Tau Zeta at Maine, was recognized for his work in the New England region. In recent years, he was responsible for the securing of housing for several of the chapters and the rehabilitation of several other local corners of the fraternity. At the convention, on the morning following the receipt of his award, Brother Cooper was elected to the post of Tribune of the fraternity.

Summer, 1961



Top left, Dr. A. I. Cohen reads the Michael C. C. Lillienfeld Distinguished Alumnus Citation awarded to Brother Erwin Cooper, standing, left. Top right, Brother Alvin Saul, Nu, proudly makes the Chapter of Merit Award to his chapter. Their chancellor accepts. Right, Chancellor Harvey Mallement, Epsilon Lambda, accepts the Grand Chaplain Award. Making the awards are Brothers Samuel J. Lefrak, center,



and Alvin Saul, right.

The feature of the evening was the Man of the Year Award for 1961. Brother Sylvan Meyer, Omega, editor and publisher of the Gainesville, Georgia, *Daily Times*, received the award. Following his speech of acceptance, Brother Meyer left the convention to supervise his paper's coverage of Atlanta's school integration.

The University of North Carolina graduate was born in Atlanta, Georgia, and received his early education in Columbia, South Carolina. As an undergraduate at Chapel Hill, he compiled an outstanding record and with his 1943 graduation, he joined the Navy as an officer, seeing combat service in the Pacific.

Brother Meyer joined the staff of the Gainesville *Daily Times* in 1947. His rise to position of editor and publisher was rapid.

During his career, he was awarded a Neiman Fellowship at Harvard University which resulted in his study of city planning and a subsequent campaign that brought a recreation of the Lake Lanier, Georgia, area.

His greatest achievements have come in the field of race relations. His speeches in connection with HOPE (Help Our Public Education) have gained wide attention and he serves as chairman of the Georgia Advisory Committee to the U.S. Commission on Civil Rights.

CONVENTION DONORS PLEDGE SIX THOUSAND DOLLARS TO SCHOLARSHIP AND STUDENT AID FUND DRIVE

In a dramatic move on the floor of the convention, Outgoing Consul Lou Manes donated \$5,000 to the Scholarship and Student Aid Fund of the fraternity. The gesture was made in honor of the new President of the fund, Dr. A. I. Cohen of Boston, Massachusetts. In making his tribute to Brother Cohen, Past Consul Manes brought attention to the New Englander's long years of service to his fraternity.

The convention had just had a report on the scholarship fund given by its outgoing president, I. Heiman, Atlanta, Georgia, when Brother Manes rose to announce his gift. The delegates sat startled for a moment before rising to a standing ovation in gratitude. There immediately followed a rash of donations, several in honor of Consul Joe Gerson, and before the meeting was adjourned, the fund had received close to \$6,000 in gifts.

The spurt of generosity had come at a difficult moment for the Scholarship Fund. Since its organization several years ago, it had helped a great many undergraduates with grants, but in his report, Brother Heiman noted that the prospects for future aid looked increasingly difficult, since available monies were running low. Few expected the response to this news to be so great.

Brother Heiman noted in his statement to the convention that bequests to the fund were increasing and requested that other members of the fraternity give this means of giving further consideration.

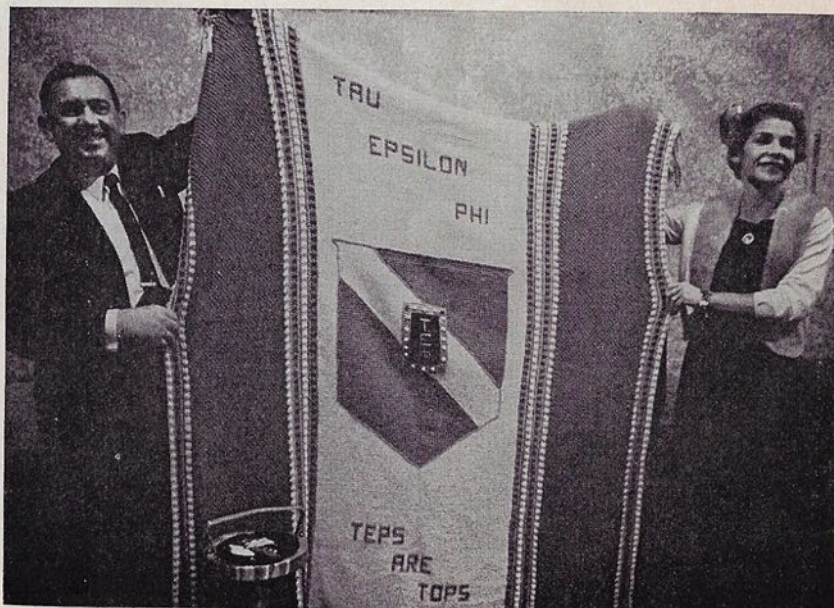
Through the services of the Scholarship and Student Aid Fund, needy students, not necessarily members of the fraternity, are given financial aid. Applications are made to the Board

of Trustees of the fund, and monies up to the sum of \$400 are granted to each student found worthy. Grades, character and ability are among the considerations. The grants are given as loans to both graduate and undergraduate students. The fund is tax deductible.

In another drive to aid the Scholarship Fund, a huge lavender and white afghan was displayed at the convention. Knitted by Mrs. Yale Bloom, it was being offered in a raffle by her husband, a member of the Grand Council from Tau Delta chapter. They are residents of Lima, Ohio. The flawlessly knit blanket features a crest of the fraternity at its center and the legend "Tau Epsilon Phi—Teps Are Tops." The fraternity's colors, lavender and white, are used simply. The drawing for the afghan will take place at the Grand Council's October meeting.



Scholarship Fund President Dr. A. I. Cohen, left, accepts a check for \$5,000 from Outgoing Consul Lou Manes for the fraternity's Student Aid Fund. Past Consul Manes made the donation in honor of Brother Cohen's election to the post as head of the Scholarship Fund. Below, Brother and Mrs. Yale Bloom display an afghan being raffled off for the benefit of the fraternity's Scholarship and Student Aid Fund. Mrs. Bloom created the lavender and white work. The winner will be selected at the first meeting of the new Grand Council in October.



PLUME



HASKELL OSTROFF

PAST CONSUL

1905-1961

He was a gentle man. He was a friendly man and the smoke of his ever present pipe wreathed about him in an aura of warmth and welcome. He was just "Hutch" to everyone. He is gone.

Brother Haskell Ostroff, Theta '02, who served as Consul of this fraternity from 1957 to 1959, died in Boston, Massachusetts, on September 8, 1961, after a brief illness.

Hutch had a firm grip and an easy smile for everyone. When, in conversation, he would put his arm around one's shoulder, he would make the feeling of fraternalism come alive. Though one hardly knew him, Hutch had a way of making you feel like a lifelong friend. The creed of his fraternity was his normal way of life.

It was at the Montreal convention in 1959 that Hutch became Consul of Tau Epsilon Phi. To that point, he had served almost continuously on the Grand Council for nearly twenty years and in 1955, he was awarded the Michael C. C. Lillienfeld Distinguished Alumnus Service Award. In his term of office as Consul, the fraternity had two of its best years, growing substantially. After he stepped down in favor of Past Consul Lou Manes, Hutch continued his work for the fraternity. Only recently, he had acted as installing officer at the induction of Epsilon Xi chapter, Clark University.

When the Concord convention opened at the end of August, Hutch was fully expected. But he was taken suddenly ill two days earlier. The news of his absence shocked the banquet room to silence and cast a pall over the rest of the proceedings. A resolution expressing the fraternity's distress was sent to Boston, but the words failed to take the place of Hutch's wise and friendly presence.

Hutch left behind him a legacy of loyal devotion to his fraternity. His works on its behalf were great and good and his friends were many. He was a man to be remembered. He was needed. He will be missed.

ANNOUNCEMENT: A NEW LIFE INSURANCE PLAN

We are pleased to announce that a Term Life Insurance Plan is now available to the undergraduates and alumni of the Tau Epsilon Phi Fraternity. The following is a resume of the amounts of insurance and premium rates continuing to age 70 or convertible before 65.

The table of amounts of insurance and premium rates available in each age group are based on an automatic guaranteed renewable term in-

surance plan (but not after age 69) divided into five year age categories with waiver of premium benefits included. Every member pays the rate

applicable to his age category as he reaches same and his amount of insurance is adjusted accordingly.

AGE	AMOUNT OF LIFE INSURANCE	ANNUAL PREMIUM	SEMI-ANNUAL PREMIUM
To 29	\$10,000	\$ 32.50	\$ 16.90
30-34	10,000	39.00	20.30
35-39	10,000	51.00	26.50
40-44	10,000	70.00	36.40
45-49	10,000	98.50	51.20
50-54	7,500	106.50	55.35
55-59	7,500	156.38	81.30
60-64*	5,000	154.75	80.45
65-69**	5,000	231.00	120.10

*Brothers nearest age 64 and under may apply for insurance.

**Renewals only.

The above schedule of amounts of insurance and premium rates can be converted to a permanent plan of insurance at the option of the policyholder at any time prior to the policy anniversary nearest his 65th birthday for the amount of insurance in

force at that time, as listed above, WITHOUT EVIDENCE OF INSURABILITY. Brothers who wish to increase the amount of insurance in force at the time of conversion, may do so with a medical examination for the difference.

A member may only purchase the amount of insurance as listed above under his age category. A Family Protection Rider which provides liberal term life insurance benefits is available on an optional basis to qualified applicants on the lives of

his wife (to age 65) and children (to age 25). Included also are coverage for Accidental Death for the family and conversion privileges.

The policy is participating and, as such, provides for dividend payments to members to further reduce the cost of this insurance.

Each member will name his own beneficiary. He may, if he so desires, designate the Fraternity to receive all or part of the proceeds.

We urge you to avail yourself of this valuable protection at these low rates by sending in your application immediately. Make checks payable to Murray Halpern Agency, Inc., and mail to 76 Beaver Street, New York 5, New York.

**CLIP AND
MAIL THIS
COUPON
NOW**

Clip and mail

APPLICATION TO
Citizens Life

INSURANCE COMPANY of NEW YORK

33 MAIDEN LANE, NEW YORK 38, N. Y.

1. Insured's full name (last, first, initial)		FOR HOME OFFICE USE	
		Plan No.	
2. Address (No. and Street, City, Zone, State)		Date of Birth (mo.)(day)(yr.)	Male <input type="checkbox"/> (1) Female <input type="checkbox"/> (2)
3. Face amount of insurance	4. (Check one) <input type="checkbox"/> Widowed <input type="checkbox"/> Single <input type="checkbox"/> Married <input type="checkbox"/> Divorced		
5. Beneficiary Designation: Name (last, first, initial, relationship)			
6. Remitter: Name		HOWARD ROSENTHAL, MURRAY HALPERN AGENCY, INC.	
Address		76 BEAVER STREET, NEW YORK, N. Y.	
7. Association Name		TAU EPSILON PHI	
Address		130 WEST 42ND STREET NEW YORK, N. Y.	
8. Will premium payments on any insurance be terminated or reduced because of the issuance of the insurance now being applied for? <input type="checkbox"/> Yes <input type="checkbox"/> No If "Yes," give company, amount and reason			
9. Have you during the past two years been actively and regularly engaged on a full-time basis in an occupation for remuneration or profit? <input type="checkbox"/> Yes <input type="checkbox"/> No If "No," state reasons for and duration from full-time basis of employment.			
10. (a) Have you consulted a physician or sought treatment or diagnosis, for any symptoms, diseases, abnormalities, or disorders during the last 5 years? <input type="checkbox"/> Yes <input type="checkbox"/> No (If "Yes," list all)			
(b) Additionally, if you are a physician or osteopath, or employed by a hospital, physician or osteopath, have you consulted any physician or other practitioner, formally or informally or sought or obtained treatment, tests, advice or diagnosis, for any reasons relating to proposed insured's health, within the last 5 years? <input type="checkbox"/> Yes <input type="checkbox"/> No			
(c) Have you had a periodic or health examination during the last 5 years? (If YES, give date and name of doctor) <input type="checkbox"/> Yes <input type="checkbox"/> No			
11. Have you ever applied to any company for life, accident, or health insurance and A. Been declined or postponed? <input type="checkbox"/> Yes <input type="checkbox"/> No B. Been offered a policy differing the plan, amount, or premium rate from that applied for? <input type="checkbox"/> Yes <input type="checkbox"/> No			

I am a member of the Association named above and this application is made pursuant to the life insurance program for its members. I hereby apply for a Term Life Insurance Policy for the face amount of insurance indicated above as available to me under such insurance program. I understand that premiums under such policy are to be paid Citizens Life Insurance Company of New York through the Remitter. I understand that the insurance applied for will not become effective unless and until the full first premium has been paid and Citizens Life Insurance Company of New York unconditionally approves this application.

DATE SIGNATURE OF INSURED

Enclosed is check for:

first annual ☐ semi-annual ☐ premiums-\$.....

PLEASE DO NOT WRITE IN SPACES BELOW — FOR HOME OFFICE USE

Effective Date	Life Premium

1.4 Rev. '61



PRESIDENT J. F. KENNEDY NAMES JUDGE KAUFMAN TO U.S. COURT OF APPEALS

Federal Judge Irving R. Kaufman, Epsilon, President Kennedy's first appointment to the United States Court of Appeals for the Second Circuit, was sworn in on September 29, 1961.

The oath was administered by Chief Judge J. Edward Lumbard in the Court of Appeals, Foley Square, New York City. More than 200 persons witnessed the ceremony, including Judge Kaufman's wife and two sons, Senator Jacob Javits of New York; Senator Thomas J. Dodd, Connecticut; N.Y. District Attorney Frank S. Hogan; Rabbi Louis Finklestein, Chancellor of the Jewish Theological Seminary; the Reverend Laurence J. McGinley, President of Fordham University, and David Sarnoff, chairman of the board of Radio Corporation.

President Kennedy's appointment came at the end of the summer. Among the many who urged the President to consider Brother Kaufman was the late Judge Learned Hand, who termed his friend "... a man of most exceptional capacity."

Judge Kaufman was appointed to the Federal District Bench for New York by President Harry S. Truman in 1949. During his term, he presided at many significant trials. The most famous were the Ethel and Julius Rosenberg trials and the recent New Rochelle, N.Y., school desegregation case. Recently, Judge Kaufman received the Harlan Fiske Stone Memorial Award of the Association of Trial Lawyers of the City of New York. It was given "in recognition of his outstanding contribution to American jurisprudence."

The 51-year-old Fordham alumnus has recently been in the news with his decisions on the New Rochelle school desegregation issue. The sub-

urban town north of New York City was found to be gerrymandering school districts so as to exclude Negro students from certain areas. After prolonged debate, the order was handed down that this practice cease and that the students be able to attend the schools of their choice. The case attracted nationwide attention and several similar cases have begun to work their way up through the courts as a result.

Two years after his appointment to the Federal district bench by President Truman, the quiet, scholarly TEPman was vaulted into national prominence. In a trial that lasted from March 7th to March 29th, 1951, Judge Kaufman presided over one of the most famous cases in American history, the Rosenberg espionage trial. From the moment the hearings opened until long after the Rosenbergs were executed in Sing Sing prison, the Judge went through an agonizing personal ordeal.

Though the target for a sustained campaign of terror and abuse by Communist sympathizers of the Rosenbergs, Judge Kaufman always maintained a strict and proper impartiality in the courtroom. The jury brought in a verdict of guilty and the matter of sentence fell to the Judge. In the stillness of a synagogue, he found the strength to do his duty and on April fifth of that year, he sentenced the Rosenbergs to death and their accomplice, Morton Sobell, to 30 years in prison.

Now the Communists quadrupled their campaign against Judge Kaufman. In June of 1953, the accused spies were executed. From the sentencing to the fulfillment of that sentence, two years and 32 appeals pass-

ed, including two to President Eisenhower. But in every instance, the law and the President stood firmly behind Judge Kaufman.

Since the Rosenberg trial, and prior to the New Rochelle case, one other story brought Judge Kaufman to national headlines. In 1957, he presided at the trial of the mobsters arrested at the gangland convention in Appalachian, New York.

The Second Circuit Court of Appeals, to which Judge Kaufman has been appointed covers New York, Connecticut and Vermont. In swearing him in, Chief Judge Lumbard said, "Our new judge has a most exceptional capacity, an admirable mind and is extraordinarily diligent." The brothers of Tau Epsilon Phi are proud to count him as one of their organization.

Tau Epsilon Phi is pleased to welcome a new chapter. On October 29th, Kappa Zeta Phi at Northeastern University was initiated.

The ceremonies were in Boston, the school's location. The group was represented as a colony at the recent Concord convention.

Kappa Zeta Phi joins the growing New England province headed by Regional Consul Stanley Jacobs.

A further story on the chapter's installation will appear in the next issue of the PLUME.

BULLETIN: At the recent Grand Council meeting in New York, the winner's name for the afghan, pictured on page 10, was drawn. By sheer coincidence, he is Mr. TEP, Israel "Doc" Schwartz. He refused at first to accept, but upon being reassured that all was legitimate, he took the blanket.

PLUME

NAT'L SMOKER OPENS 1961 RUSH SEASON

The Grand Ballroom of New York's Statler-Hilton Hotel was jammed with college men on the night of September sixth. The occasion was Tau Epsilon Phi's Annual National Rushing Smoker. Representatives of nearly all the fraternity's chapters were present as incoming freshmen swarmed to the ballroom.

Long lines of interested fraternity prospects stood at the registration table long after the appointed starting time. Once signed in and tagged, the new men were welcomed inside and shown the area set aside for the school of their choice. Under convention-like standards, chapter upper-classmen waited to greet the rushees. This first gathering after a long summer also served as a means for the TEPmen to reacquaint themselves with their brothers.

The program was brief. A speech of welcome was made by Brother Sidney Suntag, Executive Secretary, who also introduced the featured speaker of the evening, A. Harold Frost, Rho, former Consul, noted attorney.

With the formal program over, the individual chapters took over on their own. Several groups had taken rooms in the hotel and they acted as hosts to the rushees over beer, punch and refreshments. The talk in the various rooms took different courses. Some groups encouraged informal bull sessions, while others gave formal seminars on registration procedures and orientation problems.

For those chapters that were not strongly represented enough to sponsor their own room, the national chapter provided refreshments and encouraged the groups to continue the start given by the evening. More than 800 prospective freshmen had attended the affair.



ALUMNI NEWS

NATHAN ROBERTS NAMED TEP'S FIRST GENERAL

On September first of this year, Brother Nathan J. Roberts, Sigma, was promoted to the permanent grade of Brigadier General in the Regular Army and became Assistant Judge Advocate General for Civil Law. As such he is one of the five general officers in the Judge Advocate General's Corps of the Army, one of the largest law offices in the United States.

Word of Brother Robert's promotion first came to the fraternity's attention through Lieut. Colonel Irvin Kent, also a Sigma man and also with the Army's Judge Advocate General's Office, though in Paris, France.

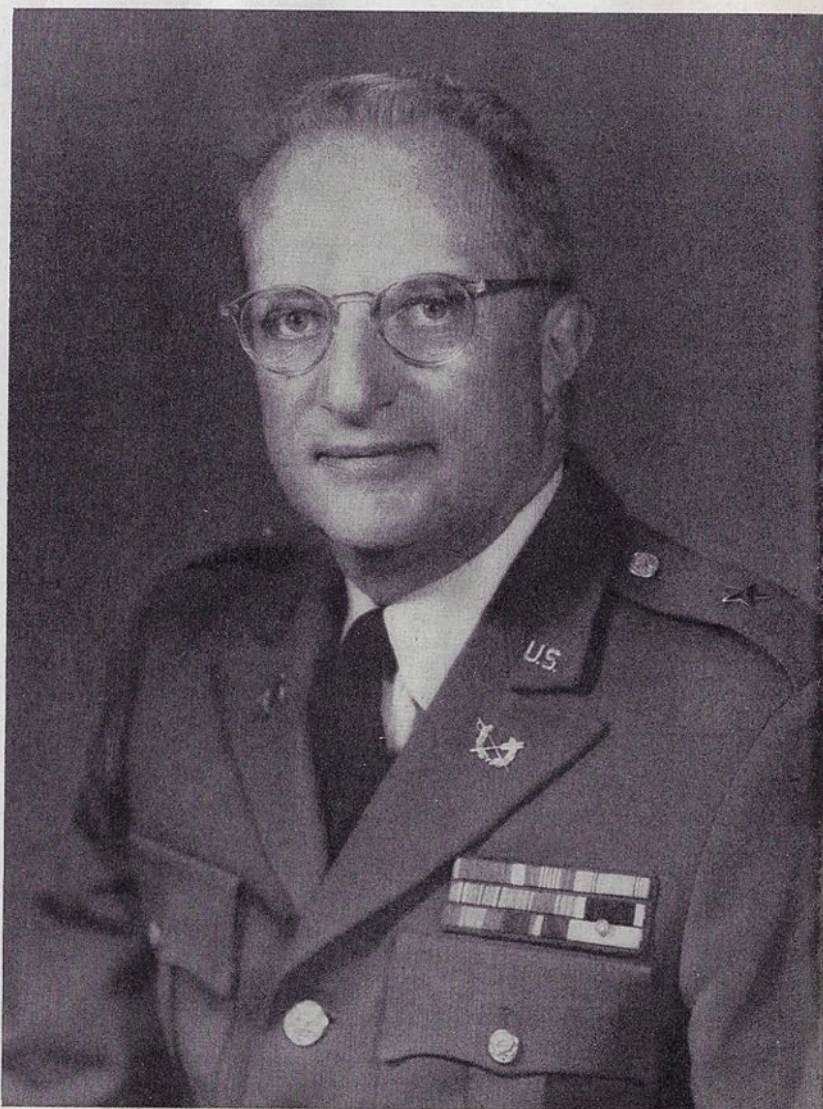
As a result of the presidential appointment to the rank of general Brother Roberts will be stationed at the Pentagon in Washington, D. C.

His Army career of more than twenty years has taken Brother Roberts around the world. Among his duties, he has been the Chief of the Military Affairs Division and Chief of the Procurement Law Division of the Office of the Judge Advocate General, the Deputy Chief of Staff for International Affairs for the Communication Zone, France, in charge of all negotiations between the Army and the Government of France concerning Army business and American soldiers stationed in that country, and also Staff Judge Advocate, Sixth United States Army, stationed at the Presidio of San Francisco, California, where he was the Chief Legal Officer for the eight western states. He spent the entire World War II in the Pacific Theater. He has received the Legion of Merit, the Army Commendation Award and a citation from the Government of France.

Prior to entering the military service, Brother Roberts practiced law in Jacksonville, Florida, for about ten years, where he was the Past Worshipful Master of his Masonic Lodge and twice President of the Exchange Club. He was one of the early members of his chapter, its fifth pledge and its thirteenth initiate. He was graduated from Syracuse University

with an AB degree and later received a JD degree from the University of Florida, where he was active in Tau Alpha chapter. For a time he was one of Tau Epsilon Phi's Regional Consuls. He later received an LL.M degree from George Washington University and was the auditor at The Hague Institute of International Law at The Hague, Holland. He has been admitted to the Supreme Court of the United States and is an active member of the Federal and American Bar Associations.

MILITARY MEMOS . . . 2ND LT. DAVID G. PERIELLO, Tau Omega, recently completed the Quartermaster officer orientation course at Fort Lee, Va. . . . 2ND LT. DAVID A. KAM, Epsilon Deuteron, has finished training at the Quartermaster School at Fort Lee. He was in the same class as BROTHER PERIELLO. . . . CAPT. MARVIN E. JAFFE, Zeta Lambda Phi, ended a six-week preventative medicine orientation course at the Brooke Army Medical Center, Fort Sam Houston, Tex. . . . PVT. JACK S. KEYSTONE, Phi Gamma, completed eight weeks of training at the Armor Training Center, Fort Knox, Ky. . . . LT. COL. IRVIN M. KENT, Sigma, was elected president of the Federal Bar Association, Paris, France.



ZETA LAM'S ALBERT KLEIN NAMED MUNICIPAL JUDGE

New Jersey's Delaware Township recently gained a new Municipal Court Judge when Brother Albert Klein, Zeta Lambda Phi, was sworn in by Camden County Judge R. Cooper Brown (see photo left)



The Temple graduate is a Colwick, New Jersey, resident and has been a member of the bar of that state for 26 years. He began twice-a-week hearings immediately after he was sworn in.

Brother Klein, who began teaching law school classes in 1942, when South Jersey Law School was still in

existence, has served as professor at Rutgers University Law School, Camden, for many years.

Nor have his activities been confined to those of a strictly legal nature. Klein served for several years on the board of trustees of the Camden County Community Chest. He is also a past president of the Jewish

Federation of Camden County, and a member of the National Council, Anti-Defamation League of America.

ROBERT M. EVANS, Omega, recently returned from a trip to Berlin with his chief, Edward R. Murrow, head of the United States Information Agency. Brother Evans, who was appointed as Murrow's assistant in April, was in the German city on a "special assignment of an undisclosed nature."

He was the only member of the CBS staff whom Murrow took with him when he joined the Information Agency. Evans wrote news programs for CBS, feature programs and was a writer and director of news programs for radio WMCA in New York.

MILTON N. MOUND, Alpha, was recently appointed to the Board of Directors of the Oppenheimer Fund, a major mutual fund. . . . **HERBERT LEVINE**, Sigma, is an attorney-trainee with National Labor Relations Board. . . . **S. CHARLES LERNER**, Delta, acted as guest speaker at the Hotel School, Cornell University recently. His lecture was on the topic "Bar Maintenance in Compliance with Liquor Regulations."

ARTHUR RAYBIN, Epsilon Delta, is now Director of the Graphic Arts Office at Yeshiva University, New York City.



Samuel J. Lefrak, left, receives a Proclamation from Mayor Robert F. Wagner, Mayor of New York, proclaiming Interfaith Day. Brother Lefrak was Chairman of the day's ceremonies and was recently appointed to the Board of Directors of the Interfaith Movement along with U. S. Senator Jacob K. Javits and Jackie Robinson. Recently, Brother Lefrak, a noted New York City builder, was the recipient of an award from the Queens Council of the Boy Scouts of America.

David Silver, Phi, has been named to the Diamond Jubilee Anniversary Committee of Yeshiva University, the oldest and largest university under Jewish auspices in America.

UNDERGRADUATE CHAPTER NEWS

ILLINOIS TECH

The spring semester was the last of Rho Delta Rho's residence in the castle on Michigan Avenue. After years of wandering the deserts of red tape and deans of students, the TEPs at Tech are finally getting a real home of their own. The brand new TEP house, located in the school's ultra modern Quad, has room for 24 housemen and 12 townmen on each of its second and third floors. The facilities given us in our new home will benefit us immensely both academically and socially, for in the new house, we shall have both electricity and running water.

All seriousness aside, however, here's a rundown of our activities for the past semester.

We started the 1961 TEP social season with a rip-roaring rush party whose theme was taken from the "Untouchables". The ever popular ping pong courts were converted into a reasonable facsimile of a "speak-easy" replete with a password and peephole. Everyone had a good time, only they wouldn't admit it.

Following this came several skillfully run socials and a scavenger hunt. Deftly arranged, masterfully executed, the scavenger hunt sent couples in search of items such as the May 1961 "Playmate", a smelt, and various other rarities.

The semester ended with our annual Induction Dinner-Dance, a very enjoyable affair, which was held in the Villa Venice. Among those officers sworn in were: Chancellor Jim Phlamm, Vice-Chancellor Bob Samson, Bursar Dave Templar, Scribe Norm Levine, and Pledge Warden Ron Nelson.

Moving on to sports, it will be seen that the Rho Delts had a successful season. In football, we finished in third place in our league. In basketball, the fancy shooting of Ron Nelson, Zevey Steiger, Jim Phlamm and Mike Dunn stunned many an opponent. Our ping pong team slammed their way to second place in our league and a place in the finals. With all our athletes wearing P.F. Flyers next semester, we ought to do even better.

Scholastically, we were well over all-men's average at Illinois Tech. This is about the 23rd semester we have pulled that rabbit out of our hat.

Members of the Rho Delta Rho chapter at Illinois Tech circulate during a recent rushing smoker in their house. At the start of the current school year, the chapter moved into a new house on their new architecturally outstanding campus. The Rho Delta Rho chapter has just completed a banner year in all respects. Promise for the year to come is great, especially with the acquisition of their new house.



Here are a few individual accomplishments during our past semester. Our steward, Larry Elewitz, was hanged (hamburgers three times a day is too much). Bob Samson, our perpetual pledge, has added another honor to his list—Rho Epsilon. Ralph Bogart and Dave Templar have chugged their way into Beta Omega Nu. Get well soon, guys. Also, twelve brothers made the Dean's List and four of our men were granted National Science Foundation Fellowships to engage in undergraduate research during the summer.

With this, and the fact that my Shaeffer is rapidly running out of ink, I close this issue's installment.—HENRY WASSERSTROM

TULANE

Rush Week at Tulane University is over! An almost unreasonable force, the brotherhood of Epsilon Kappa chapter, has exhaustedly wended its way through a highly competitive and tiring rush. After but two years on campus, we were faced with the overwhelming task of meeting the challenges of fraternities which number brothers into the seventies with but seven members of our own.

Each day, brunch or lunch was served in our totally redecorated and air-conditioned TEP house. In the hot New Orleans afternoon, in the house overlooking the campus, seven members became like seven hundred—providing every service from transportation to assignation. As evening fell, the staid Tulane residential area resounded to the sounds of Dixieland and the air fairly bristled with the promise of excitement. Yet, some-

how, despite the fervor of more than sixty TEP-entertained freshmen searching for extra-curricular joys, each man was effectively rushed through extensive personal contact and discussion.

The brothers of Epsilon Kappa were few—until TEP spirit made its powerful presence felt. Owen Bressler, president of our alumni, gave up unnumbered days and nights to the service of this chapter, and as if this were not enough, his lovely wife added her ubiquitous grace and charm to the week's affairs. Alumnus Bob Nagler, charter member, freely gave his time and services, as did his wife, and from New York, Marty Zipern flew to New Orleans to give his guidance and aid. Four undergrads of Nu chapter, at their own expense, drove to New Orleans to demonstrate their desire to bring the name of TEP to even greater heights. From Chicago, Miami and Houston, TEPmen came in an effort to keep EK a living and growing component in the TEP family.

And the result of this total effort? Twenty top freshmen were pledged; and the unique Tulane rush system assures that still more will join our ranks as this year continues.

Marty Weinstein, TΔ, and Harvey Kahn, Zeta Lambda Phi, have transferred to Tulane from established houses to continue their education while giving guidance to this house. Here again, TEPS have willingly given that Epsilon Kappa may prosper.

We, the members of Epsilon Kappa chapter, cannot express the gratitude we have in our hearts for the unselfish fraternalism which has given our chapter unlimited potential.

PLUME



Barry Fishkin, RPI's history ace on their G.E. College Bowl team.

Finally, we offer eternal gratitude to the "Bald Eagle," Brother Suntag, and to Joe Gerson for their efforts and continuing faith. — MALCOM ROBINSON

RENSSELAER POLY

As we go to press, a twenty-two man strong pledge class is taking out group life insurance prior to being introduced to the rigors of Help Week. Comprising TEP's largest pledge class in recent years, the group boasts of "Coon" Rakow and Jake Levy, starting tackles on the Frosh eleven, Ken Golden, cross-country and Frosh baseball stalwart and a budding politician, and Mike Ryvicker, Editor of the Hillel Scroll. In addition, pledge Dave Mandell was appointed to the Sales Bureau of the Fieldhouse.

Rensselaer's Trendex rating soared to a new high during March and April as a team of four "brains" whipped all challengers on the G.E. College Bowl. Contributing a touch of suaveness and worldliness to the team was TEPman Barry Fiskin, history ace, who is now having trouble keeping up with his fan mail.

TEP continued its domination of the Bachelor, campus humor mag,

Summer, 1961

holding over half of the Senior Board posts. With Paul Strudler serving as Editor, Perry Ashley as Managing Editor and Barry Fishkin as Literary Editor, circulation rose from 1300 to over 2300 with no ceiling in sight. Rising in the heirarchy are sophs Steve Aranoff and Ken Brody, in charge of layout and photography.

Serving also as president of Hillel, Brother Strudler was elected to Who's Who in American Colleges and Universities. In addition, Steve Dittleman embezzled funds as Hillel treasurer.

TEP placed fifth scholastically (top sixth), with brothers being elected to Tau Beta Phi, Eta Kappa Nu, Epsilon Delta Sigma, Phi Lambda Upsilon, Chi Epsilon, and Pi Delta Epsilon. Ex-Chancellor Don Gentner, a Union Carbide Scholar was awarded a National Science Foundation Fellowship to study physical chemistry at the University of California. Brothers hold General Motors and Texaco Scholarships and two future lawyers have been accepted at Harvard and Georgetown.

Brother Schnall, awakened at the coming of spring, showed his usual flashiness as second baseman on the varsity nine, while Brother Schwamm recovered from an excruciating cross-country season.

Epsilon Iota was pleasantly surprised by a recent visit from Sid Suntag, who unfolded a couple of surprises of his own, which left us breathless. (ED. NOTE: Brother Suntag, who was taken ill at RPI, was also left a little breathless.)

Term officers are Chancellor Pete Menikoff, Vice-Chancellor Steve Dittleman, Scribe Hank Sobel, Bursar Bob Gould and Steward Mike Greenbaum.—HANK SOBEL.

COLUMBIA

Alpha chapter is proving itself to be one of the most vigorous in the entire fraternity. Even though we are now engaged in a house remodeling program, our brothers have still managed to remain very active on the campus.

Tau Epsilon Phi was by far the best represented at the Interfraternity Council (Pamphratria) Spring Formal. The outgoing Pamphratria Chairman is Brother George Greenberg under whose aegis both the Formal and the Spring Carnival

were run. Other TEPs are also active on campus. Joe McLaughlin is an outstanding wrestler on Columbia's Ivy League championship team. He is also junior class representative to the Student Board. The captain of the tennis team is Les Moglin, while the manager is Alvin Schiffrin. Richard Roth is production manager of Spectator, the Columbia College newspaper. Barry M. Scotch is the outgoing secretary-treasurer of the Student Union, Bob Heller is a member of the Board of Managers of the Student Union and Arnold Chase is crew captain.

Academically, the chapter takes a back seat to none. The many law and medical school acceptances (to top flight colleges) garnered by various brothers attest to the intellectual prowess of the fraternity. Several brothers were also recipients of Dean's List letters and unfortunately, the list is too long to run in these pages.

Our recent chapter elections resulted in the following alignment of officers: Chancellor Jerry Engelberg, Vice-Chancellor Michael J. Weinberg, Bursar Seymour Moskowitz, Scribe Scot M. Blue, Historian Robert M. Heller, Warden Joseph McLaughlin and Chaplain Peter Lushing.

Twenty pledges, under the direction of Brothers Scot Blue and Scott Mayorga, are wood panelling the walls in the house.

The social program of the house is also very ambitious. We have had highly successful Western and Charles Addams parties in addition to a cocktail affair on the night of the Pamphratria Ball. A calypso party as well as an affair during the Spring Weekend were also planned. Stag events with girls from local colleges and nursing schools have proven entertaining and Dave Lieberman, social chairman ex officio, provided many of our brighter moments.

As a continuation of a long and desirable tradition, the brotherhood invited individual members of the faculty to fraternity dinners. The food this year has proven palatable at worst and frequently enjoyable. The meal plan has been highly successful and the added attraction of food prepared by a genuine chef has augmented attendance. As much as 70 per cent of the brotherhood can be found at dinner several nights per week. The opportunity to meet fa-

CHAPTER NEWS CONTINUED

culty members was another incentive responsible for the successful meal plan.

A final area in which the chapter fared well was athletics. The volleyball team won the IFC title and the basketball squad also did well. Hopes were high for the softball team which, bolstered by many sterling veterans, should have achieved victory—ROBERT M. HELLER

MICHIGAN

This semester Chi is observing its first anniversary as a recognized chapter at Michigan. The tremendous progress we have made in establishing ourselves on campus is indicative of the many successes we have had during this year, something we anticipate will continue in the future.

After a very successful rush period, we inducted a pledge class of nineteen men, setting a personal high record. Not only are we rapidly increasing in size, but also we are attracting the key men on campus. Many pledges are helping to increase TEP's reputation by participating in some of the all-campus activities. Pledges Larry Cohn and Fred Bournstein are members of the Michigan Union staff and Fred is also chairman of Union Madness, a night of entertainment which is the gala climax of the fall orientation week. Pledges Harvey Maltz is President of JIFC, while pledge Harvey Brown is co-director of the 1961 Soph Show.

We also have several brothers who have been active on campus. Brother Phil Rhodes is a member of the Varsity Swimming Team and Brother Marty Widzer was a member of the Michigan team competing in the 1961 Big Ten Bowling Championships. Brother Bob Greenes is a member of the Joint Judiciary. Moreover, Brother Greenes was elected to membership in Phi Beta Kappa and was named a James Angell Scholar, the highest honor which can be bestowed on a Michigan undergraduate.

Socially, Chi has enjoyed a full calendar of events throughout the semester, including several theme parties at the house. During the annual Spring Weekend, which was held in late April, Chi participated with one of the women's residence halls in the three day series of events,

highlighted by a costume parade and house building contest, which we entered under the theme of a "Geisha Paradise." Our Spring Pledge Formal was held in May at the Sheraton Cadillac in Detroit.—PETER ROOS

DREXEL TECH

This year Epsilon Eta is showing Drexel Tech that the TEP house is one of the best. Structural changes have been made in the house and living facilities have been enhanced to provide for the needs of the housemen. The improvements include a new recreation room.

Epsilon Eta is represented in school by Brothers Marty Baum, Rich Roberts, Mike Aronow and Norm Hollander. Norm was elected to the presidency of Men's Student Council and Marty was chairman of Drexel's Spring Prom. Rich is Associate Editor of the yearbook while Mike is on Student Council.

During Homecoming Week, we presented a skit and cheer in competition with the other fraternities.

Our first successful social of 1961 was our New Year's Party. Also outstanding was the Las Vegas party. Gambling and dancing was the order for the evening and the featured event was the "races." Four white mice ran around a track to determine the winners of the event. We are now preparing for Kand, the annual interfraternity Choir Competition. In May, Spring Weekend was held in the Pocono Mountains and it was the biggest event of the year.

Brother Barry Pogach addresses the newly inducted pledges of Drexel Institute of Technology's Epsilon Eta chapter. The occasion was the dinner that followed the ceremony on the Philadelphia campus. More than 100 TEP men attended. The chapter, one of the newest in the fraternity, is going into its eighth year. More than thirty men were inducted at this session marking the start of their pledge period.

This term, Epsilon Eta inducted the largest pledge class in its history. An unusual and highly successful rushing season was climaxed when more than 30 men accepted pledge pins for Tau Epsilon Phi. Under the able direction of Pledge Warden Abe Littenberg, the class is on the first step of the path to brotherhood. During their pledgship, they will live at the fraternity house.

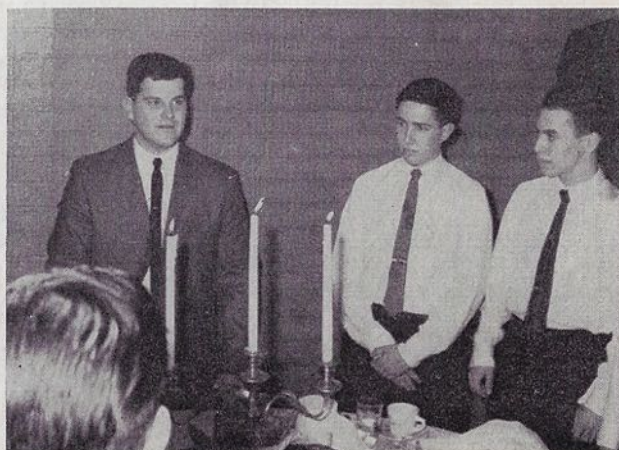
On June fourth, Epsilon Eta commemorated its seventh anniversary. Thanks were due to an excellent Executive Council led by Brother Barry Pogach. The past semesters were a tremendous school year.

PENNSYLVANIA

Opening its doors on September seventh, two weeks earlier than usual because of the University's tri-mester system, Rho chapter was able to get an early jump on the other chapters in planning its fall season.

Endeavoring to draw closer the bonds which tie us to our neighboring Drexel and Temple chapters, Rho has planned socials and fall sports events for our three groups. We have also scheduled leadership sessions with Epsilon Eta and Zeta Lambda Phi during which we hope to improve our policies concerning rushing, pledging, the conduct of meetings and other topics of mutual concern to the houses.

The men of Rho are not without their honors. We are proud to announce the appointments of Robert Hirschhorn as Managing Editor of the Daily Pennsylvanian, Ronald Abel as Managing Editor of the Re-





Zeta Lambda Phi brothers at Temple University in Philadelphia, demonstrate a color-

ful and successful rushing gambit used last spring. The pony and wagon paraded its

load of brothers and friends through campus streets, inviting rushees to a smoker.

cord, the school yearbook, and Michael Brown as Special Publication Editor of the Daily Pennsylvanian. Bruce Haims has been elected head Crew Manager and to Scabbard and Blade Honor Society. Also Henry Cramer was elected to the Hexagon Senior Society. On the academic side, Myron Broff was awarded a full scholarship in Oriental Cultures.—
MIKE GARSTON, JEFF WEINSTEN.

MARYLAND

The year has come to a close and Tau Beta has finished one of its most enjoyable and successful years. First one should note one of the highlights of the year. The men of Tau Beta are Metropolitan Washington Interfraternity Basketball Champions. We won the title by beating Phi Epsilon Pi of American University by forty points. For the first time in the history of the school, four men from one team (Ours) were on the fraternity all-star team. Previously we had won the intramural school championships. Brother Howie Heiss was named the outstanding frater-

nity player, while Steve Alpert, Bruce Dribbon and Joel Sherman placed on the all-star team. The powerhouse returns and hopes to repeat the same feats next year. At the close of the season, Tau Beta was second among twenty houses for the fraternity athletic trophy. Clark Goldstein, a pledge, won the National Junior Ping Pong Championship in Detroit this year and is rated thirteenth in the men's division in this country. He represented the United States in playing against Russia this winter. This year we also initiated the Tau Epsilon Phi Annual Three Man Basketball Tournament on our newly refinished court. The event won praise from the Greek system and the school for its spirit and sportsmanship.

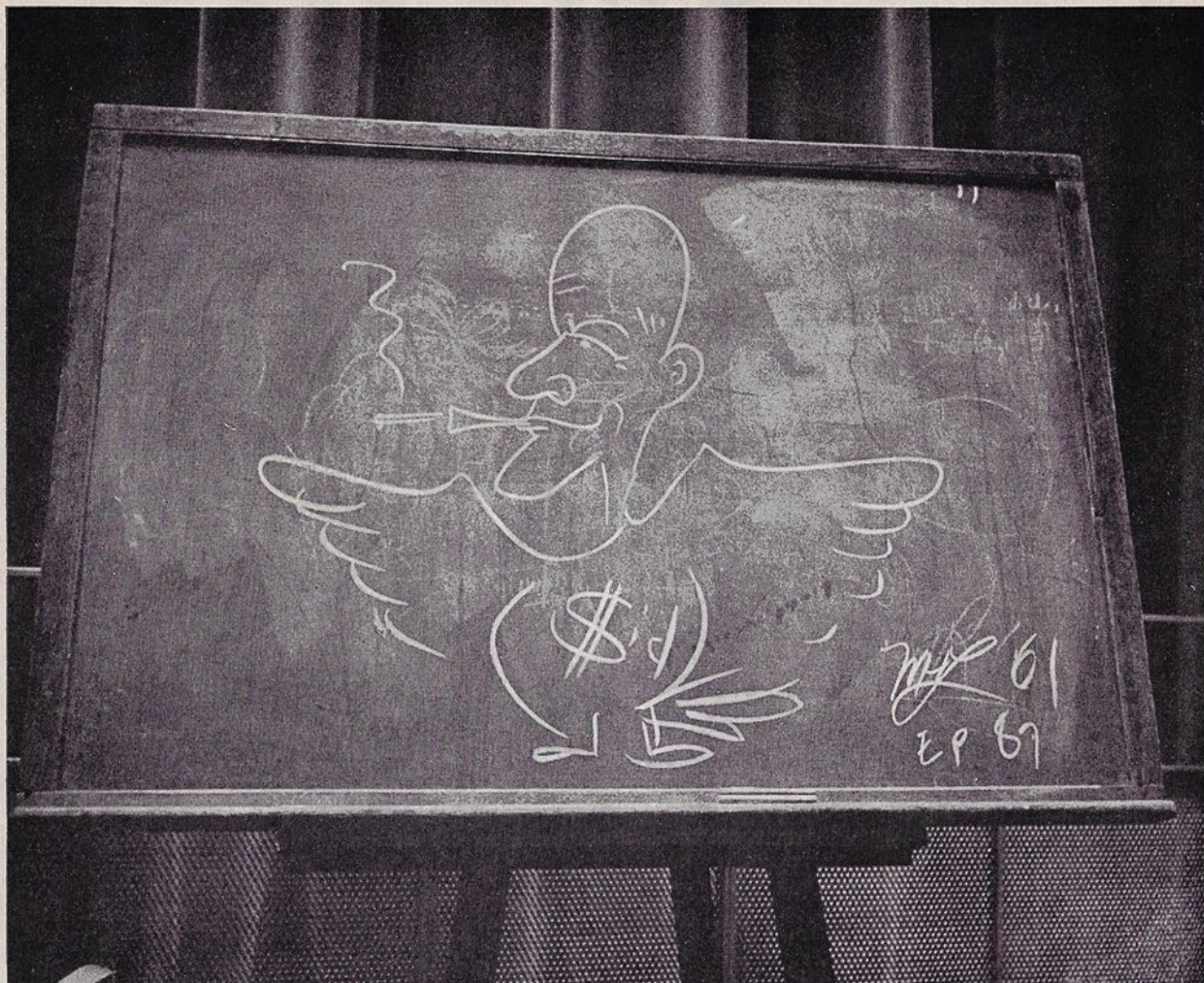
Socially, we had a terrific year. Our "Greek Week" parties were the best on campus and it seemed the whole school attended. We topped off the year with our spring formal held on a boat that sailed up the moonlit Potomac. To help cap off a good social year, our nominee, Marlene Harris, won the title of Miss

Maryland and soon might wear the Tau Epsilon Phi pin. In passing, one must note that the famous "BUG" dance was brought to the Maryland campus by Brother Steve Alpert.

However impressive our athletic and social achievements were, the most important event at Tau Beta this year was the dedication of the Samuel J. Lefrak Library. This honor was bestowed on one of the most outstanding brothers of Tau Beta. A beautiful ceremony was followed by an impressive luncheon for all the guests and parents that attended this memorable affair.

We seem to be making progress academically and five brothers made the Dean's List this year. Our strict quiet hours were praised by the administration. The house itself will get a boost from the new ultra-modern kitchen now under construction. Finally, a new rush pamphlet will be distributed in the fall and should help us in continuing our fine rush record. Next year we will improve our record once more proving that TEPS ARE TOPS at Maryland.

CHAPTER NEWS CONTINUED



TEP's beloved "Bald Eagle", Executive Secretary Sid Suntag is left behind in

caricature on the blackboard that graced the dais at the fraternity's recent national

rushing smoker. The work was done by a Brooklyn College undergraduate.

MIAMI

Tau Xi chapter started the year off with a real bang by obtaining a pledge class of 55 new men. The past officers of the last semester made a real change within the chapter. They were Chancellor Buddy Margolis, Vice-Chancellor John McClain Bursar Lloyd Glazer, Recording Scribe Steve Barron and Corresponding Scribe Stan Winokur.

After winning the President's Cup for the second time in 1959-60, we had a lot to live up to for the intramural season of 1960-61. From the beginning, the chapter didn't think that we would have a good chance in sports, but when the season was over, we retired three cups and ended up in second place in the President's

Cup runnings. One of our outstanding athletes was Murray Stockfedder, who made four all-campus teams. Julie Cohen was the most outstanding varsity athlete, playing his usual tricks on opposing teams for the Hurricane's basketball team. Two new pledges, Rod Mandelstam and John Hamel, both hailing from the Union of South Africa, are new tennis prospects for the university's team next year. Lastly, Mel "Butch" Seigel drove his Austin-Healy to victory three times in local Miami sports car races.

To top off our wonderful year, the "25" Sweetheart Dance was held at the Montmartre Hotel on Miami Beach. The formal was a real success. The highlight of the affair was a formal supper. Our new sweetheart

is Miss Kathy Pitman from Port Arthur, Texas. She was crowned Miss Miami and was on the University Homecoming Court.

This summer the sixth annual Macabiah Games were held in Israel. Tau Xi chapter had three brothers in the events. Rod Mandelstam represented the Union of South Africa in tennis, Marty Blitstein represented Canada in the broad jump and Julie Cohen, from Brooklyn, New York, represented the U. S. on its basketball team.—STAN WINOKUR.

BOSTON

As this year draws to a close, it is plain to see that the men of Theta chapter have surpassed all rivals in every aspect of fraternity life.

The winning of the annual all-

PLUME



Gamma's new officers gather during one of the chapter's affairs to celebrate their recent elections. Left to right, Richard Cederbaum, member of the Board of Governors; Jerry Klanfer, Scribe; Mike Advocate, Board of Governors; Alan Jackowitz, Chancellor; Perry Turetsky, Pledge Warden; Hoffenberg; seated, Gary Arzt, Historian; and Lenny Silverman, Bursar. The celebration took place during one of the New York University chapter's affair at the Young's Gap Hotel, in Liberty, New York.

university Float Parade in the fall started things off. Soon afterwards, a highly successful rush period, under the co-chairmanship of Al Striar and J. J. Schwartzberg, gave us a record pledge class, including some of the finest men on campus. A little later, the brothers collected 10,000 cigarette packs to win a beautiful color television set.

Some of our many successful social events included Homecoming, Splash Parties, a Hawaiian party, TEP Weekend and many theme parties. Our annual post-rushing Beer Blast really separated the men from the boys.

Athletically speaking, the Thetans were untouchable. In the All-University Intramural competition, we took first place in swimming, thanks to the outstanding performance of Panama Cohen. The volleyball championship was also ours and we took close seconds in track and field and bowling. We rounded out our sports activities by taking third in football and basketball.

In the latest elections, Bernie Brickle was re-elected Chancellor and Al Striar was named Vice-Chancellor. Other officers include Scribe Bob M. Cohen, Bursar Dick Bernowitz, Member-at-Large Merb Katz and Historian Al Klein.

The social and athletic achieve-

ments did not stop the Theta men from acquiring the second highest scholastic average on campus. Our alumni advisors, Dick Barkin and Alan Sosdik, did a fine job of helping the brotherhood achieve the fine position that it has attained.—ALAN L. KLEIN.

N.Y.U.

The 1960-61 academic year has brought many memorable events to Gamma chapter. October was highlighted by the appearance of TEP's successful football team, sparked by Jerry Klanfer and coached by Brother Perry Turetsky. Our success in football was followed by similar success in basketball, volleyball and softball, as we vied for the Violet Fraternity Council's Trophy of Trophies. In the final analysis we fell a little short of our goal, having to satisfy ourselves, temporarily, for a second place berth. Brother Gil Ostereich was chosen for the Fraternity Council's All-Star team. Brother Klanfer was recognized for his outstanding playing on the football team and in basketball.

Our social season, in addition to our weekly Friday night parties, was highlighted by our Hawaiian Party in September, the Pledge Red Head Night, a Cabaret party, our Hollywood Masquerade and, of course,

the highlight of our season, the Annual Formal Weekend, this year held at the Young's Gap Hotel in Liberty, New York. The Formal took place in mid-April and was featured by the induction of Gamma chapter's new officers. They were Chancellor Al Jackowitz, Vice-Chancellor Dave Tartikoff, Bursar Lenny Silverman, Scribe Jerry Klanfer, Historian Gary Arzt, Chaplain Shelly Stern and Pledge Warden Perry Turetsky.

In addition to the induction dinner, the TEPs and their dates enjoyed a weekend of swimming, horseback riding, tennis, dancing, drinking, etc.

Back on the campus, TEP was involved in the hotly contested University elections. When the votes were in, the Violet Party, under the leadership of several TEPs and the support of all Gamma chapter, had captured several offices. Among them were Brother Mike Advocate, Senior Class President; Brother Mike Serota, Junior Class President; Brother Joel Serota, Junior Class Vice-President; Brother Barry Rose, Senior Representative to the School of Commerce Accounts and Finance (SCAF) Council. Brother Rose is also President of the UAO (the Undergraduate Athletic Organization). In addition, Brother Elliot Hirschberg was

(Continued on Page 26)

TEPROGRESS

PINNINGS

Irwin Balkin, Tau Xi, to Naomi Greenberg
Joel Taubin, Tau Theta, to Sonya Gordon
Leo Breitman, Tau Theta, to Susan Scher
Robert Levine, Tau Theta, to Judith Schwartzbach
William Rosenberg, Tau Theta, to Andrea Blitz
Warren Adelson, Theta, to Linda Mason
Robert M. Cohen, Theta, to Judy Kaitz

Alan Feldman, Theta, to Eileen Michaels
William Handler, Theta, to Joan Sheen
Dan Jeline, Theta, to Margorie Ress
Peter Nesson, Theta, to Roberta Litchman
Martin Scher, Theta, to Barbara Morse
Harry Tabenken, Theta, to Helen Gordon
Bob Lucas, Tau Xi, to Sharron Huirshman
Marty Blitzstein, Tau Xi, to Kappy Pitman
Bruce Fine, Tau Xi, to Carol Philips
Bruce Cole, Chi, to Sarah Culver

George Taft, Chi, to Sue Jacobson
Marvin Lazerson, Alpha, to Judith Schoenholtz
Sanford Joel Schlesinger, Alpha, to Mildred Nadler
Alvin Schiffrin, Alpha, to Mulia Amkrant
Perry Turetsky, Gamma, to Gail Eager
Dennis Rosoff, Gamma, to Phyllis Anderson
Jerry Klanfer, Gamma, to Charlene Mirles
Howard Cohen, Gamma, to Bobbie Krasnor
Ted Davis, Sigma Phi, to Charlene Smith

ENGAGEMENTS

Jack Ruda, Sigma, to Linda Gold
Murray Stockfedder, Tau Xi, to Rosalind Rothschild
Jess Fliashnick, Tau Xi, to Lynn Rosenberg
Stanley Claman, Omicron, to Lorna Kutzin
Steve Gertsman, Omicron, to Bonnie Neiman
Richard Price, Theta, to Meryl Seegal

Mike Stoltz, Epsilon Rho, to Beverly Holtz
Ronnie Lass, Gamma, to Lenore Weiss
Peter Blatteis, Gamma, to Sue Kramer
John Irwin Smeyne, Tau Beta, to Tema R. Sussman
Ken Gross, Alpha Beta, to Iris Goodman
Martin Stryker, Tau Theta, to Esther Fisher

Ed Adler, Epsilon Iota, to Helaine Cohen
Howard Meridy, Kappa, to Sandra Perler
Jerome S. Bass, Tau Theta, to Marilyn Aronesty
Bob Nesoff, Sigma Phi, to Rosalie Strassner
Selvyn Gottlieb, Tau Gamma, to Roslyn Appleman
Stanley J. Kirschner, Gamma, to Linda Barth

MARRIAGES

Robert Metzger, Sigma, to Marsha Wishengrad
Sidney Meyer, Sigma, to Lynn Mayer
Alex Beller, Tau Xi, to Shelly Kramen
Martin Goldstein, Omicron, to Sheila Goldstein
Harry Spitzer, Epsilon Rho, to Frances Lee Willner
Howard Yaffee, Chi, to Lois Grossman

J. Robert Mantler, Gamma, to Evelyn Ceil Hiller (Rabbi Irving J. Block, Tau Mu, officiated)
Steve Rosenoff, Omicron, to Sandra Chernack
Alvin Capp, Tau Theta, to Gail Trebow
Martin Kass, Tau Theta, to Belle Joyce Eichner
Les Rose, Tau Theta, to Nancy Pittle

Jack Roth, Theta, to Jean Blinder
Fred Sands, Epsilon Rho, to Renee Neuringer

BIRTHS

To Bro. and Mrs. Henry M. Kaufman, Gamma, a daughter, Teri Ellen
To Bro. and Mrs. Donald J. Hart, Tau Delta, future TEP, Cary Steven
To Bro. and Mrs. Marvin Schrager, Tau Delta, a daughter, Robin Monique
To Bro. and Mrs. Robert K. Low, Gamma, a future TEP, Gary Marshall
To Bro. and Mrs. Herbert B. Marx, Alpha, a future TEP, Daniel Thomas

To Bro. and Mrs. Lawrence Kaufman, Theta, a daughter, Debora Lynn
To Bro. and Mrs. Jack Sadow, Phi, a daughter, Wendy Mona
To Bro. and Mrs. Samuel Brickle, Theta, a daughter, Jamie Lynn
To Bro. and Mrs. Charles Sagan, Tau Pi, a daughter, Shari Elise
To Bro. and Mrs. Gerald Brown, Epsilon Iota, a future TEP, Steven Michael
To Bro. and Mrs. Peter Rosenberg, Epsilon Iota, a future TEP, Peter Lawrence



To Bro. and Mrs. Martin A. Levin, Tau Delta, a future TEP, James Michael (pictured above).

IT IS WITH THE GREATEST
PLEASURE YOUR GRAND
COUNCIL INVITES YOU TO

Become a LIFE SPONSOR of Tau Epsilon Phi

In celebration of the Golden Anniversary of the fraternity, the Grand Council offers you, the alumni and undergraduates, a new opportunity in membership.

Now, for the first time in the history of the fraternity, you can become a Life Sponsor, a new status that includes the Plume for life, freedom forever from all alumni dues, a hand engraved wall plaque suitable for framing and an engraved billfold identification card, PLUS the satisfaction of being a lifelong backer of TEP's great program for college men of every age.

Even discounting inflation and the possibility of a dues increase, it is still just plain good business sense to become a Life Sponsor. At the present dues rate of \$5.00 per year, it takes only 20 years to match the purchase price of a Life Sponsorship.

Now is the time to join. The sooner you do it, your investment will grow and grow.

Life Sponsorship fees are \$100, payable in one sum or in five annual, equal \$20 installments. From that time on, you will be free of alumni dues forever.

Clip the coupon on this page and mail your check for \$100 today!

I wish to take this
opportunity to be-
come known as a

LIFE SPONSOR

of Tau Epsilon Phi. I
have enclosed my
check to the fratern-
ity for the amount
indicated below.

- ☐ \$100 full lifetime payment.
- ☐ \$20 the first of five annual payments.

Fraternally,

name _____

address _____

chapter _____

New York

DAVID ZAITZ, *Rho*
Hightstown, New York
(Livestock Broker)

New York

MARTIN A. FLEISCHER, *Sigma*
Investors Planning Corp. of
America (Mutual Funds)
60 E. 42 St., New York

TED HARRIS, *Sigma*
(Walston & Co.)
74 Wall St., New York

MARTIN B. KLOTZ, *Kappa*
745 Fifth Ave., New York 22

LEONARD LEHMAN, *Delta*
c/o DuPasquier & Co., Inc.
61 Broadway, New York

ROBERT LOEWENTHAL, *Tau Rho*
(Hirsch & Co.)
655 Madison Ave.
(Stocks)

MANNY SHERMAN, *Theta*
Orvis Bros.
15 Broad St., New York
(Stock Broker)

BERTRAM TIMONER, *Delta*
Hirsch & Co.
(Stocks, Bonds & Commodities)
655 Madison Ave., New York

LEO YOUNG, *Gamma*
70 N. Main, Freeport
(Frozen Foods)

Ohio

AARON N. MINTZ, *Tau Delta*
3974 Lansdale Road, Cleveland
18. (Food)

Pennsylvania

HARRIS SHAPIRO, *Rho*
Robinson & Co.
42 South 15th St., Philadelphia
(Stocks)

BUILDERS AND CONTRACTORS

Connecticut

HOWARD B. FALK, *Tau Mu*
187 Griswold Dr., West Hartford
(Builders & Developers)

Florida

LEONARD J. MICHAELSON, *Psi*
578 W. Davis Blvd., Tampa
(General)

Illinois

STANLEY I. CORMAN, *Tau Lambda*
3825 N. Ashland, Chicago
(Paving)

IRVING L. MISSNER, *Psi*
2940 N. Campbell Ave., Chicago
(General)

TED COHAN, *Rho Delta Rho*
Abbey Electric Co.
15 E. 69th St., Chicago

New Jersey

SEYMOUR WEISBERG, *Tau Lambda*
Weisberg Plumbing & Heating
111 52nd St., W. New York

New York

SAMUEL J. LEFRAK, *Tau Beta*
The Lefrak Organization
(See Real Estate)
97-27 64th Rd., Forest Hills

RICHARD SCHWARZ, *Phi*
Sales Estim., Marks Bros., Inc.
695 Brackner Blvd., Bronx
(Ornamental Bronze)

ARNOLD SENTER, *Phi*
Empire State Office &
Maintenance Co., Inc.
36 W. 17 St., New York
(Building maintenance)

Ohio

ALEX G. SIEGLER, *Tau Delta*
A. Siegler & Sons Builders, Inc.,
5117 Lee Road, Maple Heights

Canal Zone

C. WILLIAM HOMA
Box 2005, Balboa
(Tile Contractor)

BUILDING MAINTENANCE

New York

ARNOLD SENTER, *Phi*
(Empire State Otc. & Maint. Co.)
36 W. M St., New York

BUSINESS MACHINES

California

PHILIP GOFSTEIN, *Tau Epsilon*
Underwood Corp.
3251 Wilshire Blvd.
Los Angeles 29

CAMPS

New York

PAUL DIBNER, *Rho*
Director of Camp Tall Timbers,
Casco, Maine, for Boys and Camp
Truda, Oxford, Maine, for Girls.
20 Chase St., White Plains

MARVIN B. EDELMAN, *Tau Mu*
Camp Windham (Windham
Center, Conn.)
2179 Matthews Ave., Bronx,
New York

CHARLES W. KLEIN, *Epsilon*
(Island Lake Camp for Boys
& Girls, Wayne County, Pa.)
20 S. Broadway, Yonkers

EDWARD RONKIN, *Tau Beta*
1488 Sylvan Lane, E. Meadow,
Long Island
(Camps Hi-Lake & Winona,
Lake Como, Pa.)

Illinois

ALAN WASSERMAN, *Tau Lambda*
1044 Oak Ridge Dr., Wilmette
(Camp Menominee, Director
E. River, Wis.)

CHEMISTS

New York

S. CHARLES LERNER, *Delta*
Associated Analytical Laboratories
(chemical analysis) and National
Diagnostic Laboratories (Medical
and clinical analysts)
336 Lexington Ave., New York
Dr. I. SCHWARTZ, *Alpha*
c/o Bendiner & Schlesinger
Third Ave. & 10th St., New York

CLEANING, LAUNDERING, DYEING

Ohio

ARNOLD C. COHN, *Tau Delta*
(Chain store cleaning & laundry)
60 Willard St., Akron 5

COMMERCIAL FINANCING

New York

ROBERT KRAMER, *Rho*
Congress Factors Corp.
1412 Broadway, N. Y.

DEALERS

California

HARRY W. ABELSON, *Nu*
Abel Products Co. (Medical,
Surgical, and Laboratory
Specialists)
856 W. 58 Pl., Los Angeles 44

Connecticut

JOSEPH M. COHEN, *Sigma*
44 Lindale St., Stamford, Conn.
(Wholesale & Mfg. Food Products)

Illinois

NATHAN HORN, *Psi*
(Wholesale Meats)
1241 George St., Chicago

New York

EUGENE V. BANDLER, *Sigma*
(Tri-County Farms
(Wholesale Food)
25-75 Francis Lewis Blvd.,
Flushing 58

ALBERT A. FORMAN, *Epsilon Rho*
(Sales Representative for
Capitol & Angel Records)
1463 Ocean Ave., Brooklyn

WILLIAM H. JAFFE, *Gamma*
1932 Jerome Ave., Bronx, N. Y.
(Tires)

SAMUEL R. SCHWARTZ,
Nu-Zeta, Lambda Phi
Paragon Oil Co., Inc.
(Fuel oil, domestic and industrial
greases, lubricants)
2100 Hunters Point Ave., L.I.C.

Ohio

YALE BLOOM, *Tau Delta*
H. Bloom & Co. (Scrap)
Lima

MARCUS RUBEN, *Tau Delta*
Lima Bargain Center
(Jobbers General Merchandise)
4200 S. Dixie, Lima

DENTISTS

New Jersey

DR. NATHANIEL Z. FRAYNE, *Tau Nu*
2768 Hudson Blvd.
Jersey City

New York

MAXWELL B. COLTON, *Beta*
45 W. 81st St., New York 24

DENTAL EQUIPMENT

New York

LARRY ROSENFELD, *Epsilon Rho*
415 First Ave., N.Y.C.

DRUGS

Kentucky

JULIUS WISHNIA, *Tau Lambda*
Whipps Mill Drug, Louisville

ELECTRIC WIRING DEVICES

New York

HAROLD T. LEVITON, *Tau Xi*
236 Greenpoint Ave., Brooklyn

ENGINEERS

Illinois

JOSEPH L. ABRAMS, *RDR*
Chief Engineer—Electrical Con-
tractor, St. Arnaud Electric
Co., Chicago

STEPHEN C. BRULL, *Tau Lambda*
Variety Mfg. and Eng'g Co.
(Aluminum Doors and Moldings)
810 W. Fulton St., Chicago

KENNETH J. EATON, *Rho Delta Rho*
Associated Business Consultants
(Management)
612 N. Michigan Ave., Chicago

LOUIS ROSENSTEIN, *Psi*
Luminous Ceilings, Inc.
(Lighting)
2500 W. North Ave., Chicago

New York

JULIUS MICHAELS, *Phi*
6500 Jericho Tpyl., Commack
(Prof'l Eng. & Land Surveyors)

ESTATE PLANNING

New York

ROBERT M. SUGERMAN, *Phi*
50 Bulaire Rd.,
E. Rockaway, L. I.

FEDERAL CONSULTANT

District of Columbia

FRANK KATZ, *Gamma*
(Washington, D. C., Represen-
tative and Consultant on Govern-
ment Matters)
1101 Vermont Ave. N.W.,
Washington 5

FUNERAL DIRECTORS

Illinois

MILTON YAFFE, *Psi*
5206 N. Broadway, Chicago

HOSPITAL ADMINISTRATION

Pennsylvania

BERNARD M. WEINSTEIN, *Tau Pi*
2301 Delancey St., Philadelphia

HOTEL AND MOTEL MANAGEMENT

Florida

MARTIN LEVINE, *Tau Alpha*
Beau Rivage Hotel, Miami Beach

New York

SIDNEY J. COLBY, *Gamma*
Mgt. Algonquin Hotel
59 W. 44 St., N.Y. 36

INSURANCE

California

NORMAN M. SANOFF, *Rho*
361 S. Robertson Blvd.,
Beverly Hills

Connecticut

HARTT E. BERNSTEIN
(Also Real Estate)
10 Crossroads Plaza, W. Hartford

District of Columbia

JUAN B. BRENDLER, *Tau Beta*
1709 Connecticut Ave. N.W.,
Washington 9

Florida

ARTHUR JACOVITZ, *Tau Xi*
1200 S.W. 1st St., Miami
(All forms)

Georgia

LOUIS J. LEVITAS, *Phi*
55 Marietta St., N.W., Atlanta
(New York Life Ins. Co.)

Maryland

MICHAEL G. HOLOFCENER, *Tau Beta*
1413 Reisterstown Rd., Pikesville 8

New Jersey

WILBERT MARKS, *Tau Alpha*
195 Broadway
Paterson
(Ins. Broker)

New York

ARNOLD A. ARONSON, *Tau Delta*
A. Aronson & Co., Inc.
141 Broadway, N.Y.C.

LEO GOLDSTEIN, *Theta*
The Statler Hilton Hotel,
Buffalo, N. Y.

MORTON D. HANDLER, *Sigma*
(Also Real Estate)
170 Fifth Ave., New York

PHILIP S. MANNE, *Iota*
(Broker & Public Adjust.)
17 John St., New York

MELVIN I. GOLUB, *GLU, Gamma*
148-55 Hillside Ave., Jamaica

Pennsylvania

SAUL J. GOLDBERG, *Epsilon Eta*
249 Southern Ave., Amber
(Special Agent, Northwestern Mu-
tual Life Ins. Co.)

INVESTMENT BANKERS

New York

LEROY KLEIN (President) *Sigma*
DANIEL KAMINS, *Rho*
Lebenthal and Co., Inc., 1 Chase
Manhattan Plaza, New York City

LAND INVESTMENTS

Arizona

CARL L. KAUFMAN, *Nu*
3931 E. B'way, Tucson

LINEN SERVICE

California

ROBERT GORDON, *Tau Gamma*
900 N. La Brea Ave.,
Los Angeles 8
(Community linen rental service)

PLUME

New York

JOSEPH H. NADLER, Theta
San Towel Service
152 W. 42nd St., New York &
P.O. Box 92, Nutley, N. J.
(Office Towel Rentals)

MANAGEMENT CONSULTANTS

Illinois
KENNETH J. EATON
Assoc. Business Consultants
612 N. Michigan Ave., Chicago
EDWARD WITTERT, Psi 316
Frederick Chusido Co., 205 W.
Wacker, Chicago

MANUFACTURERS

Georgia
HAL GAINES, Tau Xi
1154 Reedy Circle N.E., Atlanta
(Chemicals)

Illinois

SHELDON H. BIALES, Rho Delta Rho
Continental Nu-Steel Metal
Products Co.
(Sect. Metal Overhead Doors)
1248 S. Ashland Ave., Chicago
GEORGE J. GOLDSTEIN, Psi
2268 S. Lumber St., Chicago
Acorn Corrugated Box Co.
DAVID LEAVITT, Tau Lambda
Leavitt Tube & Metal Co.
(Electric welded steel tubing)
1717 W. 115 St., Chicago

Maryland

LEONARD EISENBERG, Tau Beta
Lenmar Lacquers, Inc.
3208 Shelburne Rd., and
150 S. Calverton Rd., Baltimore

New Jersey

ALVIN A. BIRNE, Tau Lambda
Swan Michigan Oil Co.
(Oils, greases, core binders)
39 Zabriskie Ave., Bayonne
ROBERT J. GOLDSTEIN, Beta
Plastylite Corp.
(Plastic molding and manufactur-
ing, phonograph records)
333 North Dr., N. Plainfield

New York

JULES W. DAMSEY, Kappa
162 5th Ave., N.Y.C.
(Boys'-Students') Clothing
SIDNEY GARDNER, Nu
Alan-Roger, Ltd.
(Men's slacks and sport coats)
137 Fifth Ave., New York 10
PHILIP GARVER, Tau Lambda
Shapiro Rochester Co.
459 Portland Ave., Rochester
(Fine Floors, Counters, Kitchen
Cabinets, etc.)

Texas

MARTIN D. SIEGEL, Phi
Texboro Cabinet Corp.
(Kitchen cabinets)
Mineral Wells

Japan

DAVID A. YARIN, Phi
Yarin Metal Industry, Inc.
C.P.O. Box 1598, Tokyo
(Manufacture, Exporter, Plumb-
ing Products and Metal Parts)

MOTION PICTURE THEATRES

New Jersey

MAURICE J. MILLER, Omega
19 Central Ave., Passaic

NEEDLEWORK

New York

HARRY ABRAMS, Gamma
740 Broadway, New York
(Art)

PHARMACY

Georgia

EDWARD A. HARELIK, Nu
234 Broad St., Augusta

PHOTOGRAPHY

Arizona

CARL KAUFMAN, Nu
P.O. Box 1468, Tucson
(Free-lance photographer)

New York

MARK EIDLIN, Psi
B. M. Eidlin & Co.
(Also Real Estate & Investments)
77 St. Paul St., Rochester
ROBERT G. GIDEN, Gamma
Karden Photo Service
152 W. 42nd St., New York
(Wedding Specialists)

PHYSICIANS

DERMATOLOGY

Illinois

DR. MARTIN GECHT, Tau Gamma
110
1239 W. 18th St., Chicago

New York

TOBIAS BEEBER, Tau Iota
35-18 161 St., Flushing 58, N. Y.
JOSEPH L. MORSE, M.D., Eta
521 Park Ave., N. Y. C.

Rhode Island

DR. WILLIAM B. COHEN, Eta
105 Waterman St., Providence

ENDOCRINOLOGY & NUTRITION

New York

DR. GEORGE B. DORFF, F.A.C.P., Gamma
135 Eastern Pkwy., Brooklyn

OPHTHALMOLOGY

New York

DR. ROBERT M. STURMAN, Alpha
8 East 84th St., New York
(Diseases of the eye)

OBSTETRICS AND GYNECOLOGY

Massachusetts

DR. BERNARD LEDERMAN, Lambda
311 Commonwealth Ave., Boston

Canada

DR. NORMAN H. OLESKER, Omicron
Medical Arts Bldg., Montreal
DR. SIMON GOLD, Omicron 76
5845 Cote-Les-Neiges Rd., Mon-
treal

ORTHOPEDICS

Illinois

DR. EDWARD S. GROSSMAN, Psi
55 E. Washington Blvd., Chicago
(Surgeon)

SURGERY, GENERAL California

DR. LOUIS H. LAUFER, Gamma 382
Van Owen Medical Group, 11432
Van Owen Street, No. Hollywood

New Jersey

DR. BURTON B. BEROMAN, Mu
1156 Liberty Ave., Hillside, and
31 Lincoln Park, Newark 2

Tennessee

DR. MORTON J. TENDLER, Gamma
899 Madison, Memphis

GENERAL

Connecticut

DR. MAXWELL J. ANTELL
800 Clinton Ave., Bridgeport

Florida

DR. JOSEPH B. POMERANCE, Nu
Abbey Medical Center
5190 S.W. 8th St., Miami 34
DR. BERNARD YESNER, Tau Kappa
5524 S.W. 8 St., Coral Gables

UROLOGY

New York

DR. S. SYM NEWMAN, Zeta
150 E. 52 St., N. Y.

PRINTERS

Florida

CHARLES ROSENBERG
Rose Printing Co.
P.O. Box 549, Tallahassee

Illinois

GERALD SOKOLE, Epsilon Delta
Wilmar Printing Corp.
333 W. Lake St., Chicago 6

PSYCHOLOGIST, CONSULTING

New York

HOWARD M. HALPERN, Ph.D., Sigma
2211 Broadway, New York

PUBLIC RELATIONS

Florida

STUART BLUMBERG, Tau Alpha
Miami Beach Chamber of
Commerce
Miami Beach

PUBLISHERS

Massachusetts

JAMES KAHN, Theta
The Jewish Times
118 Cypress St., Brookline

New Jersey

BERNARD PROTZEL, Tau Nu
Gann Law Books
224 Market St., Newark

REAL ESTATE

Connecticut

HART E. BERNSTEIN, Tau Mu
(Also Insurance)

Florida

ARTHUR B. LEIBOVIT, Tau Alpha
230 Royal Palm Ways, Palm Beach

Illinois

LESLIE AND HOWARD BLUM, Psi
612 N. Michigan Ave., Chicago
(Also Investments)

New York

WILLIAM BERLEY, Delta
Berley & Co., Inc.
11 E. 36 St., New York
LOUIS S. BRAUSE, Gamma
Helmsley Spear, Inc.
60 E. 42 St., New York
STEPHEN B. DAVIS, Theta
215 East 149 St., N. Y. (Sidney
Newman Co.)
RICHARD M. DORFF, Tau Beta
Hosinger & Bode
Long Island, New York
SAMUEL J. LEFRAK, Tau Beta
(Also see Builders)
97-27 64th Rd., Forest Hills
DON LIEBERMAN, Tau Xi
23-01 44th Dr., Long Island 1
(Ind'l & Factories, Lofts, Land)

SIDNEY J. LIPSON, Rho
10 E. 52 St., N. Y. C.
ROBERT L. LOEWENTHAL, Tau Rho
Julius S. Loewenthal, Inc.
580 Fifth Ave., New York

Ohio

HARRY A. FINKELMAN
1400 Central Ave., Middletown
(Insurance)

REAL ESTATE INSURANCE

South Carolina

HARVEY ROSEN, Nu
1316 Washington St., Columbia
(Real Estate, Appraisals and
Property Management)

RESTAURATEUR

New York

ASHER A. ZELIN, Tau Xi
Market Diners, Inc.
6 Stores in N.Y.C.

Ohio

ALEX CLOWSON, Tau Delta
Ciro's Show Bar (Nite Club)
2894 E. Main, Columbus

RETAIL STORES

New York

GEORGE TURANSKY, Gamma
Nova Shoe Co., Inc.
47 W. 34 St., N.Y.C.

North Carolina

LEON SCHNEIDER, Omega
233 W. Main, Gastonia
(Department Store)
ROBERT ROSENBERGER, Omega
103 E. Franklin St., Chapel Hill
(Hub of Chapel Hill—Men's
Clothing)

Ohio

MARCUS RUBEN, Tau Delta
Lima Bargain Center
4200 S. Dixie, Lima

SALES MANAGER

New York

MARVIN A. BERNARD, Gamma
Rapid Film Technique, Inc., 37-
02 27th St., L.I.C., N. Y.
(Restoration of Motion Picture
Film)

SALES REPRESENTATIVES

New York

ROBERT K. LOW, Gamma
161 6th Ave., New York
(Savin Business Machines)
IVAN B. NATHAN, Tau Gamma
Ives Distributors
601 W. 26th St., New York 1
(Office Equipment)
SOL J. STERN, Gamma
Colonial Sand & Stone Co., Inc.
(Concrete, sand, gravel)
1740 Broadway, New York

SCHOOLS

New York

L. PETER SEGAL, Beta
(Nursery & Pre-Kindergarten)
420 Webster Ave., New Rochelle

TRANSPORTATION

New Jersey

JEROME CASSER, Psi
149 Liberty St., Little Ferry
(Bus)

VETERINARIAN

Florida

DR. DAVID H. SPECHLER, Mu
Broward Animal Hospital
1180 N. Dixie Highway,
Hollywood

THE TAU EPSILON PHI FRATERNITY

OFFICIAL DIRECTORY

Founded at the University of Pennsylvania on October 19, 1910.

Incorporated under the laws of the State of New York on January 8, 1913.

Admitted to the National Interfraternity Conference as a senior member in 1919.

National Executive Offices, 130 West 42 St., New York 36.

Telephone LACKAWANNA 4-0544, Office open 9:30 to 5:00 P.M. daily except weekends. Sidney S. Suntag, Executive Secretary.

THE GRAND COUNCIL

Consul: Joe H. Gerson, 2908 Nancy Creek Road, N.W. Atlanta, Ga.

First Vice Consul: Emanuel J. Evans, 1401 Fairview, Durham, N. C.

Second Vice Consul: Mendel Romm, Jr., 1202 Briar Hills Dr., N.E., Atlanta, Ga.

Tribune: Erwin E. Cooper, 10 State St., Boston, Mass.

Assistant Tribune: Richard Barkin, 22 Kilby St., Boston, Mass.

Quæstor: Jack A. King, 5438 Euclid, Philadelphia, Pa.

Assistant Quæstor: Donald Rosenthal, 177 White Plains Rd., Tarrytown, N. Y.

EX OFFICIO

Plume Editor: Stuart Smith, 248 E. 74th St., New York 21, N. Y.

MEMBERS-AT-LARGE

Howard Agnis, 2511 S. Garnet, Philadelphia 45, Pa.

Jack Berkowitz, 255 W. 88th St., New York, N. Y.

Yale Bloom, 1650 Lowell Ave., Lima, O.

Leslie Blum, 2930 Commonwealth, Chicago, Ill.

Abram I. Cohen, 491 Commonwealth Ave., Boston, Mass.

Arnold C. Cohen, 534 N. Portage Path, Akron, Ohio.

Myer Feldman, 316 High St., Holyoke, Mass.

Jacob Freezer, 30 E. 71 St., New York, N. Y.

Sanders Heller, 11-15 Main St., Gouverneur, N. Y.

S. Matthew Helman, 1 Howland St., Roxbury, Mass.

Maxwell M. Kalman, 1200 St. Alexander St., Montreal, P.Q., Canada.

Ben Kaplan, 29 Fairchild Place, Monticello, N. Y.

Samuel D. Karavan, 4818 Gransback, Philadelphia, Pa.

Samuel J. Lefrak, 97-27 64th Rd., Forest Hills, Queens, N. Y.

William Manns, 430 N. Rodeo, Beverly Hills, Calif.

Ralph Medjuck, 143 Jubilee Rd., Halifax, N.S., Canada.

Jack S. Mintzer, 6440 N. Bay Rd., Miami Beach, Fla.

Leo Schlossberg, 1000 Conn. Ave., N.W., Washington, D. C.

I. Edward Segal, 7302 S. Euclid, Chicago, Ill.

Bertram Shaiman, 6451 Sprague St., Philadelphia, Pa.

THE BOARD OF TRUSTEES

Dr. I. Schwartz, 157 W. Hudson St., Long Beach, L. I., N. Y.

George H. Behrens, c/o Practicing Law Inst., 20 Vesey St., New York, N. Y.

Arnold Glenn, 160 Broadway, New York 38, N. Y.

Dr. Jacob D. Gold, 1550 E. 17th St., Brooklyn, New York

Seymour Weisberg, 305 Jones Rd., Englewood, N. J.

Arthur Ochs, Jr., c/o United Factors, 1407 Broadway, New York 36, N. Y.

PAST CONSULS

Samuel L. Fein, 1421 Main St., Springfield, Mass.

Sol D. Shaman, 1242 McNoughton Rd., Columbus 13, O.

Isadore Heiman, 1200 Howell Mill Rd., N.W., Atlanta, Ga.

Louis Manes, 2478 Worthington Rd., Akron, O.

REGIONAL CONSULS

Province

I Nat Lash, 68 Crescent Rd., Burlington, Va.

IIa Stanley Jacobs, 223 Manthorne Ave., West Roxbury, Mass.

IIb Earl Gordon, 30 Hamlin Dr., W. Hartford, Conn.

III Ben Ungerman, 46 Eagle St., Albany, N. Y.

(V-C) Joe Ruderman, 945 Sherman St., Watertown, N. Y.

IVa Sidney Ross, 65-61 Saunders St., Forest Hills, N. Y.

(V-C) Bob Kramer, 898 Ivy Hill Rd., Woodmere, N. Y.

IVb Martin Zipern, 31 Ocean Parkway, Brooklyn, N. Y.

(V-C) Larry Gottlieb, 135-38 78th Ave., Flushing, 67, N. Y.

V Sylvan Euzent, Silver Springs, Md.

(V-C) Leonard Wissow, Philadelphia, Pa.

(V-C) John Smeyne, 4206 Springdale Ave., Baltimore, Md.

VI Unassigned

VII Owen R. Bressler, 2029 Airlene, Metairie, La.

VIII Leonard Seligman, The Howell House, 710 Peachtree St., Atlanta, Ga.

IX Irving Klepper, Fla. Title Bldg., Jacksonville, Fla.

(V-C) Leonard Wolf, 838 Edgewood Dr., Lakeland, Fla.

(V-C) Stuart Blumberg, 1975 Alton Rd., Miami Beach, Fla.

X Marcus Ruben, 1236 Lakewood Ave., Lima, O.

XI Leonard Lauter, 5033 N. Avers Ave., Chicago, Ill.

XII E. James Judd, 2026 Ash St., Denver, Colo.

XIII Jules B. Kaplan, 316 S. Rexford Dr., Beverly Hills, Calif.

TRUSTEES OF THE SCHOLARSHIP AND STUDENT AID FUND

Ben Massell, Honorary President, Atlanta, Ga.

A. I. Cohen, President, Boston, Mass.

William Bernstein, Hartford, Conn.

Erwin E. Cooper, Boston, Mass.

Alfred Garber, Atlanta, Ga.

Richard Heldeman, Jamestown, N. Y.

Sanders Heller, Gouverneur, N. Y.

Stanley Jacobs, Boston, Mass.

Jack King, Philadelphia, Pa.

Frank Constangy, Atlanta, Ga.

Mendel Romm, Jr., Atlanta, Ga.

Seymour Weisberg, Englewood, N. J.

Yale Bloom, Lima, O.

Leslie Blum, Chicago, Ill.

Leon Crestohl, Montreal, Canada

George Feldman, Boston, Mass.

Samuel J. Lefrak, Forest Hills, N. Y.

William Manns, Beverly Hills, Calif.

Leo Schlossberg, Washington, D. C.

Leon Schneider, Gastonia, N. C.

I. Edward Segal, Chicago, Ill.

Samuel Strauss, Philadelphia, Pa.

ALUMNI ASSOCIATIONS

Alabama State—President, Bertram Silman, Route 13, Box 352, Birmingham, Ala.

Baltimore—President, Sanford Fox, 4218 Lowell Dr., Pikesville, Md.

Charleston—President, Moses Mendelson, 455 King St., Charleston, S. C.

Chicago—Irving L. Missner, 233 Fairview, Glencoe

Cleveland—Leo K. Mintz, 3292 Milverton, Cleveland, Ohio.

Denver—President, Edward Korklin, 1085 Jasmine St., Denver, Colo.

Detroit—Reuben Wax, 18970 Lauder.

Georgia State—Charles Shainker, 1715 Dunwoody Trail NE, Atlanta, Ga.

Halifax—President, Ralph Medjuck, 143 Jubilee Rd., Halifax, N. S.

Jacksonville—President, Irving Klepper, Florida Title Bldg., Jacksonville, Fla.

Metropolitan New York—President, Arnold Glenn, 160 Broadway, New York, N. Y.

Miami—President, Burton R. Levey, 8030 S.W. 63 Ct., Miami, Fla.

Montreal—President, Dr. William Slatkoff, 3097 The Blvd., Montreal, Quebec.

New England—President, Richard Barkin, 20 Kilby St., Boston, Mass.

North Carolina—President, Emanuel J. Evans, United Department Stores, Durham, N. C.

Northern New Jersey—Murray Sklar, 29 Hillside Terr., Livingston, N. J.

Philadelphia—President, Hugh Odza, Market St. Nat'l Bank Bldg., Philadelphia, Pa.

Southern California—President, Chuck Gelfand, 590 So. San Vicente Blvd., Los Angeles, Calif.

Washington, D. C.—President, Allan J. Fried, 8510 Milford Ave., Silver Spring, M.D.

Western Massachusetts—Ronald Zimmerman, 66 Chalmers St., Springfield, Mass.

Alpha—Stanley I. Schachter, 276 Fifth Ave., New York 5, N. Y.

Gamma—Louis Brause, 2797 Kingsbridge Terrace, Bronx 63, N. Y.

Delta—S. Charles Lerner, 245 W. 107 St., New York City.

Theta—Alan B. Sostek, 28 Turner Terrace, Newton Centre, Mass.

Sigma—Harold Tompkins, 37 Wall St., New York, N. Y.

Tau Delta—Sol D. Shaman, 1242 McNoughton Rd., Columbus 13, Ohio.

Tau Zeta—Leonard Minsky, 46 Leighton St., Bangor, Me.

Tau Lambda—Stanley I. Corman, 7347 Damen Ave., Chicago, Ill.

Tau Rho—Paul Hachigian, 22 Leslie Dr., Wayne, N. J.

Tau Psi—Leonard D. Furman, 1013 Palisade Ave., Union City, N. J.

Rho Delta Rho—David Snalder, 6175 N. Wolcott, Chicago, Ill.

Epsilon Delta—Arthur Raybin, c/o News Bureau, Wheaton College, Norton, Mass.

Epsilon Iota—Richard E. Amsterdam, 68 Archer Drive, Bronxville, N. Y.

Zeta Lambda Phi—Jack A. King, 5438 Euclid Ave., Philadelphia 31, Pa.