

# PLUME

## SOUVENIR EDITION



**TAU EPSILON PHI**

FOUNDED 1910

INTERNATIONAL COLLEGIATE FRATERNITY GROUP

FALL-WINTER, 1983

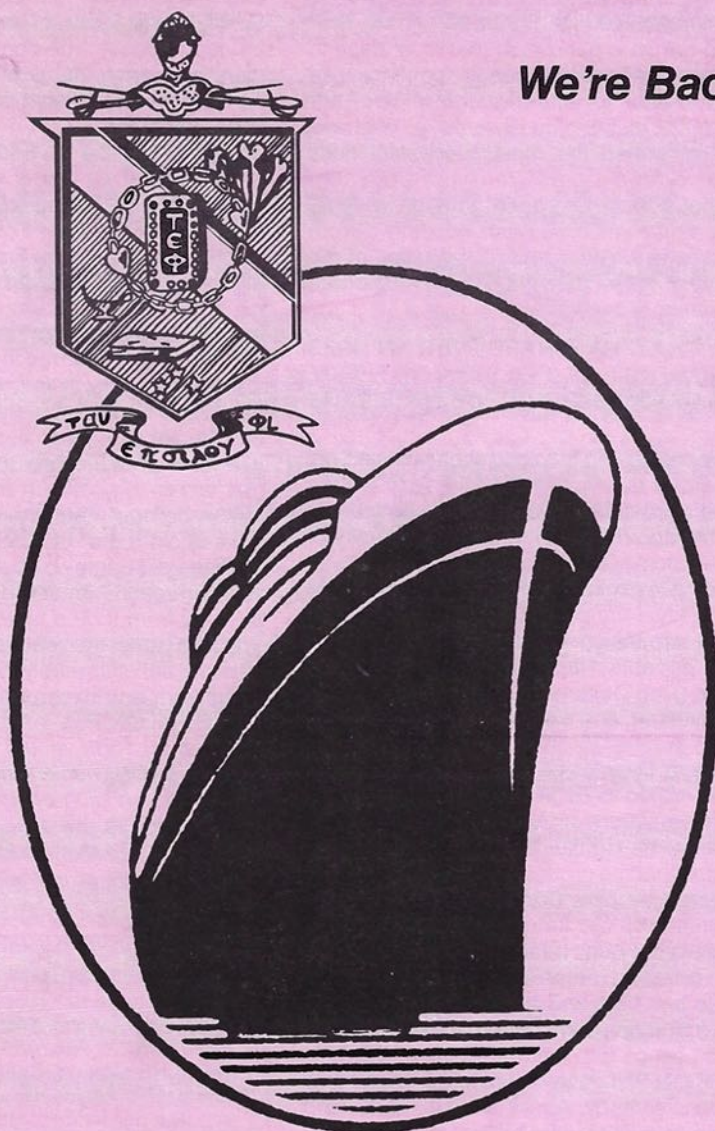
VOLUME LXXIV

USPS 436260

NUMBER 6

## Welcome Aboard

*We're Back – With Style*



**Tau  
Epsilon  
Phi**

**1983  
Convention  
Program**

## THE BERMUDA CRUISE

AUGUST 13-20 S.S. VEENDAM





## Report of the Executive Director Michael Ivers

This 1983 Convention Edition of the *PLUME* is another example of the effort to bring to our brotherhood past and present, the message of the current Grand Council:

### WE'RE BACK — WITH STYLE

Many of you were aghast when the site for our 1983 Convention was announced. A number, I am sure, were disappointed, for to some the TEP Convention is a family affair and the cost seemed prohibitive. But, the Convention is first and foremost for the delegates and the Convention Committee decided on the cruise to Bermuda. What better way to show our young men that TAU EPSILON PHI was financially strong, imaginative, and, had style — real style.

The Convention was a smashing success. The undergraduates had a fabulous time, and the alumni enjoyed themselves equally. The weather in Bermuda was beautiful, and all over this gorgeous island TEP "T" shirts could be seen out and about. Soon, our enterprising young men were seeking out beautiful girls to be contestants in the "Wet TEP 'T'" shirt contest. I don't know who had the better time, the undergraduates, the girls, or the old gray heads, like myself, who did the looking (and judging).

In the elegance of our cruise ship, the delegates found time to work for the betterment of our fraternity. With new programs already in full swing, a most amazing thing happened: Not once during our Grand Chapter sessions did someone ask, "What does National do for us?" To thousands who posed that infamous question to National Representatives it must come as a minor miracle. Well, it was not a miracle: It was the result of hard work with promises made and kept. Our boys are now aware this is a great fraternity, and its alumni brotherhood really care.

When I look back on my first year as Executive Director, I take enormous pride in what the National Fraternity has accomplished.

Let me first acknowledge the support of recent International President and Consul, Alfred C. Versacci. "Al" brought to this fraternity a commitment to excellence and a dedication that once again, this Fraternity would become the great moral and social leader that it once was. He has given me guidance as well as cooperation and allowed me the freedom to exercise my pledge to the Grand Council one year ago.

What has taken place during these past 12 months is tribute not only to "Al" but to the other members of the Grand Council. When I assumed office, I promised that I would achieve financial integrity for our fraternity,

and I would elevate the National Profile of chapters and alumni.

Both have been achieved.

The financial statement of May, 1982, if it had been correctly audited would have shown a negative cash balance. As of May of 1983, not only was our Convention expense paid for, but all our bills were current and we had a surplus to rival "the good old days." In addition, we have made available during this past year, well over \$60,000.00 to our chapters for improvements, and plan to increase that commitment for 1983-84.

We are an organization that must depend on others for financial strength, so let me take this moment to acknowledge to you, our alumni for all that you have done. We have just completed the most successful dues drive in over a decade! You have made all of this possible. It has been, through your efforts, a time when we could honestly devote our time to services and revitalization of our chapters. I want to make one very important statement of recognition.

**ALL THAT HAS HAPPENED IN 1983  
WOULD NOT BE POSSIBLE WITHOUT  
THE ALUMNI SUPPORT WE RECEIVED.**

Expansion and recolonization has, and will be funded by our alumni. This year we are targeting Arizona State University, University of Colorado (Boulder), and the University of Connecticut. One of our younger alums is planning to explore interest at Miami (Florida) University. I am particularly encouraged because expansion will be under one of our most capable National Officers, John P. Green (Rho Delta Rho). John has made the commitment, and alumni funds will finance a newly created position at National Headquarters; Director of Expansion. This position is slated to be filled in January.

The election of Albert J. "Bud" Schiff (Omega) as Consul for the next two years insures that the groundwork that was so well prepared by past Consul, Al Versacci, will continue. We are fortunate in having "Bud" succeed Al. "Bud" brings to our Fraternity a high powered organizational skill. "Bud's" profile can be found in this issue.

In just a few short weeks, Bud has made his presence felt: A streamlining of the TAU EPSILON PHI government to a leaner, more responsive body. Above all, it is "Bud" who deserves credit for the brilliant idea of having our Convention aboard a luxury liner. He is devoted to the concept of "you are what you are: Quality begets quality." These next two years will be innovative and exciting, and I look forward to it.

I am most happy to make note that much of the alumni contributions have been turned over to our TEP Foundation, the student and scholarship fund of the National Fraternity. These contributions have increased our available scholarship funds by 15%! In addition, I am pleased to acknowledge to Mr. Isadore Falk, the Michael Falk Memorial Scholarship in honor of his late son, Michael (Omega). The generosity of others, notably Marshal Persky, Lenny Wolf, Consuls, E. J. Evans, Harris Jacobs, Louis Manes, "Bud" Schiff, and Al Versacci gave our Foundation an added boost. The contributions of these men, and many, many others, helped to finance new educational publications for our undergraduates.

This fall will see the Foundation assume a greater involvement in our 1984 Alumni Campaign. In funding the drive, (all donations are tax free), the Foundation will make additional grants to the Fraternity to increase aid to our undergraduate Chapters.

I have saved the best news of all for the last. Sid Suntag, our beloved Executive Secretary, has returned to our National office for the first time in four years. This great, good, and decent man has agreed to serve as Director of Alumni Services. To those of you ten's of thousands that know and love him, as I do, his concern and care for you and all the college men who remember him, is once again a part of this Fraternity.

"The Bald Eagle" is back at the Roost, and you can reach him at the Executive Offices any day from 9:00 a.m. to 12:00 a.m.

So, as I enter the second year in my term of office, I am supremely confident and take heart from any excerpt from The Creed of TAU EPSILON PHI —

*"To hold forth in the solidarity of our brotherhood the noble action which will make for the preservation of our highest and worthiest aim; to be true to the ideal of Friendship." To this I add: 'Not only friendship, but a love of our fellow men.'"*

### THE PLUME

Published by the TAU EPSILON PHI FRATERNITY, Suite 236, 3272 Peachtree Road, NE, Atlanta, Georgia 30305. Postage paid at Atlanta, Georgia. Annual subscription rate for members of the Fraternity is \$10, which is included in the dues.

POSTMASTER: Send address changes to THE PLUME, Suite 236, 3272 Peachtree Road, NE, Atlanta, Georgia 30305-2488.

Michael Ivers, Executive Director



TELEPHONE (215) 972-6924

**EDGAR W. BRICK**  
SENIOR VICE PRESIDENT, INVESTMENTS

REPRESENTING: PAINE, WEBBER, JACKSON & CURTIS INCORPORATED  
MEMBERS NEW YORK STOCK EXCHANGE, INC.

2300 FIDELITY  
MUTUAL LIFE BLDG  
THREE GIRARD PLAZA  
PHILADELPHIA, PA 19102

James E. Taylor  
Claim Manager



242 Midyette-Moore Building  
Post Office Box 710  
Tallahassee, FL 32302  
Telephone: 877-8102

**JERRY W. NIGH**  
Vice President, Sales Marketing

**OXIMETRIX**

OXIMETRIX, INC.  
1212 Terra Bella Avenue  
Mountain View, California 94043  
415-961-4380 TWX 910-379-6492



**FRED W. BALLANTINE**  
DISTRICT MANAGER  
(312) 325-8833

6650 STERLING DRIVE • BOX 685 • TOLSON, ILL 60140  
(800) 521-9126

Charlie Brown  
(616) 459-0495



**CJ's Sound System**

Receptions, Weddings, Parties, Holidays, Banquets, Church Functions, School Functions, Business Functions, etc.

John Wilson  
(616) 456-8271

**SERVICES UNLIMITED CATERING**

**S. A. Syme**  
(803) 449-7001

THE ONE TWO D • 71st AVENUE NORTH  
MYRTLE BEACH, SOUTH CAROLINA 29577

**Royal Insurance**

**Richard A. Ulery**  
Marketing Manager

Denver Tech Center  
7730 E. Belleview Ave  
Englewood, CO 80110  
(303) 733-1870

**JOHN W. BARNES**  
Broker

4111 Rucker Road, Suite 100  
Seattle, Washington 98118  
(206) 722-3900

**ST. JOE INTERNATIONAL CORPORATION**

250 PARK AVENUE, NEW YORK, N.Y. 10177

**BRUCE A. OLSON**  
VICE PRESIDENT-FINANCE  
212-983-7332

**Donald D. Welt**  
President

Taylor Instrument Company  
Division of Sybron Corporation  
95 Ames Street, Rochester, NY 14617  
716-235-5000  
Telex 97-84-13

**THE AMERICAN LEAGUE OF PROFESSIONAL BASEBALL CLUBS**

**DICK BUTLER**

1011 17th Street, N.W.  
Washington, D.C. 20036  
(202) 638-7700

**STEINER CORPORATION**

**JOHN J. LOCK**  
GENERAL MANAGER  
871-6630

17 LAYMAN BLVD., SAN FRANCISCO, CA 94108  
TEMPLE, LINEN & TOWEL RENTAL SERVICE

**THE WESTIN CHOSUN Seoul**

**Dean Tinker**  
Executive Assistant Manager

C.P.O. Box 3706 Seoul, Korea  
Telephone 771-05, Telex K24256

**JOHN S. RUMBLE**  
FIELD ENGINEER UTILITIES

**SQUARE D COMPANY**  
2 INTERNATIONAL PLAZA DR #420  
NASHVILLE, TN 37217  
(615) 566-5688

**THE DOZIER COMPANY**  
EMPLOYEE BENEFIT AND ACTUARIAL CONSULTANTS

**R. William Dozier, Jr., F.S.P.A., MAAA**  
President

Chilbrook, Centre West  
1145 N.W. 83rd St., Suite 524  
Oklahoma City, Okla. 73116  
405-843-6671

# DO BUSINESS WITH BROTHERS

## BEGINNING WITH OUR WINTER ISSUE

## WE WILL REPRODUCE YOUR BUSINESS CARD AS AN ADVERTISEMENT

*Beginning in Fall 1983's Edition*

### A NEW AND LARGER PROFESSIONAL DIRECTORY!

Beginning this fall, The PLUME will have a full-time Editor for future publications. It will mark the first time in over a decade that we can now assure you a continuous publication on that basis.

The PLUME offers you the following choices:

- |   |                                 |          |
|---|---------------------------------|----------|
| 1. Directory Listing (4 lines) (Four Editions) .....        | Includes Fraternity Dues} ..... | \$ 75.00 |
| 2. Reproduction of your Business Card (Four Editions) ..... | For 1983-1984 } .....           | \$150.00 |

The PLUME will guarantee a circulation in excess of 40,000! It will be circulated to our most influential and affluent members throughout the United States. Distribution includes our Fall Souvenir Convention edition and our ALL-Member edition published in the winter.

Interested? Detach this coupon (your address is already on the reverse side) and mail to the Executive Offices.

To Editor, PLUME QUARTERLY  
MAGAZINE

Yes! I am interested in advertising in the PLUME. \_\_\_\_\_

I am enclosing my: ☐ Directory Listing Information ☐ Business Card

☐ Bill me ☐ Visa/Master Charge No. \_\_\_\_\_ ☐ Check enclosed.

(Please make your check payable to: The TEP Foundation)

**He may be Consul  
to Tau Epsilon  
Phi...but he's  
wise counsel to us!  
Either way, our  
heartiest  
congratulations to  
"Bud" Schiff on  
his election to  
International  
President of TEP!**



Donald M. Fordyce  
Chairman



The Manhattan Life Insurance Company  
111 West 57th Street, New York, NY 10019  
a company of Manhattan National Corporation

# A Message of Appreciation

---

**Honorable Alfred C. Versacci, Consul**

Dear Al,

As members of Grand Council we extend to you our sincere appreciation for your efforts on behalf of our fraternity.

Your commitment to our young men, your personal attention to expanding our Alumni relations, and above all your outstanding success with the first comprehensive fund drive in four years has enabled our Fraternity to enter a whole new era.

We wish you well, and hope that you will continue to lend your expertise and support to "Bud" as he takes the mantle of this exalted office.

Fraternally,

Harris Jacobs  
Sidney Suntag  
Frederic H. Milman  
Leslie Blum  
Leonard Wolf  
Michael A. Wolf  
S. Earl Gordon  
John I. Smeyne

L. J. Seligman  
Michael Allan Wolf  
Mark Ruben  
Michael Berlinger  
Richard Goldenberg  
Douglas R. Warren  
John T. Lindsay  
Alan H. Goldsmith

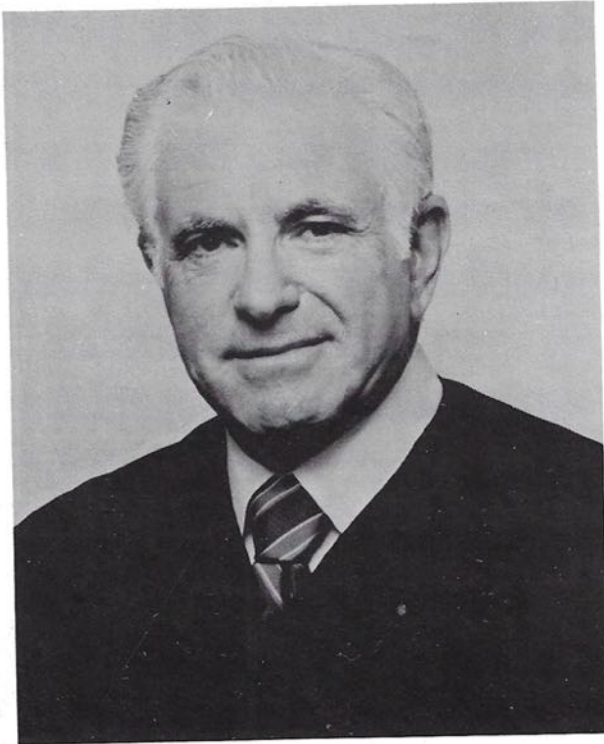
E. J. Evans  
Edward G. Lewis  
Louis L. Manes  
Seymour Weisberg  
Gerald Denmark  
Samuel J. LeFrak  
Harold Leviton  
Leo Gordon

---

**Members, Grand Council, Tau Epsilon Phi Fraternity  
1981 - 1983**



# 1983 Tau Epsilon Phi Man of the Year



It is with a great deal of pleasure that the Grand Council honors Brother Joseph A. Wapner as TEPman of the Year 1983.

What makes this selection all the more enjoyable is that it will delight our undergraduates. Judge Joseph A. Wapner has become world famous in the short span of two years.

Brother Joe was initiated into our fraternity through the Tau Gamma Chapter in March 1938. He is Tau Gamma 130.

Nothing that Superior Court Judge Joseph A. Wapner has dreamed about has prepared him for becoming an international celebrity. Since the advent of "The Peoples Court," our celebrated TEP is lionized everywhere he goes. Both he and the program have become a national favorite.

When Brother Joe takes to the bench on "The People's Court," he is getting the best of two worlds. Appearing as the Presiding Judge, he is doing what comes naturally — hearing true cases and rendering

binding decisions. It is a happy union of his love of the law and fulfillment of a dream of being an actor.

As a young college man on the U.S.C. Campus, Brother Joe confesses he was torn between becoming an actor or a lawyer. Luckily, for jurisprudence, the law won out. His judicial record is impressive: More than 20 years on the Municipal and Superior Court bench hearing both criminal and civil cases, and chosen by his fellow judges to be Presiding Judge of the Superior Court, the largest court in the United States with more than 200 judicial offices, 800 employees and a \$30 million budget. He also is past President of the California Judges Association, an organization of more than 1,000 judges throughout California.

Before practicing law, he was working as assistant credit manager for a jewelry store and had to take a case to Small Claims Court for the Company. He lost that one, but after that, in that capacity, never lost another.

Judge Wapner is the son of an attorney. His father, Joseph M. Wapner, was an attorney on the famed TV series, "Divorce Court." In that series, the cases were re-enacted, while on "People's Court," the cases are real and the judgments binding.

Brother Joe has two sons: Frederick, who is a Deputy District Attorney for the County of Los Angeles; and David, an attorney living in the State of Israel. His only daughter, Sarah, is a student at Santa Monica City College and works in a child care center.

Of his wife of 36 years, Judge Wapner recalls, "I met Mickey on a blind date, August 10th, became engaged on September 6th and were married October 24th, all in the same year."

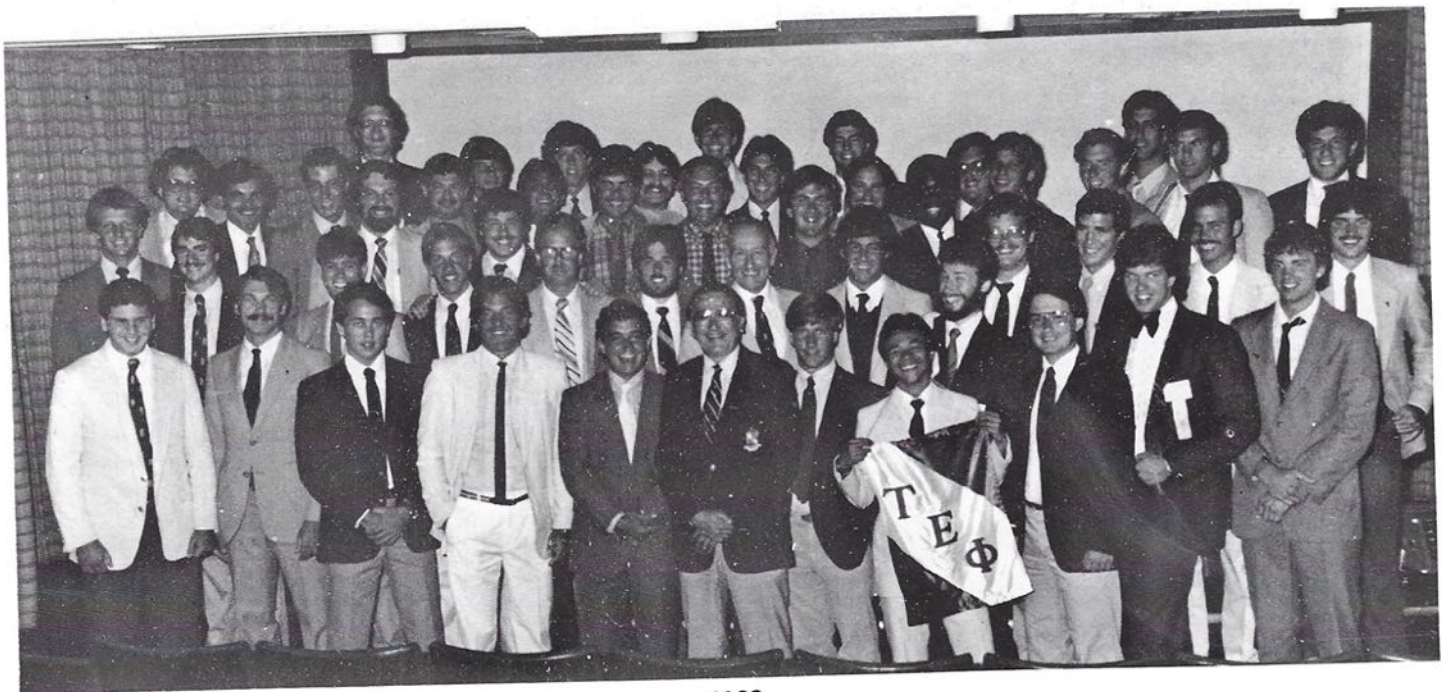
Brother Joe served in the infantry during World War II, rising from Private to 1st Lieutenant. He earned the Combat Infantry Badge, The Purple Heart, and three Battle Stars along with the Bronze Star for bravery in action.

With what free time he has, he spends on the tennis court, proficient enough to play in Senior Tournaments. He also enjoys a good game of social bridge as well as a few quiet moments of reading.

The Grand Council takes great pride in presenting to an outstanding American, our TEPman of the Year Award to Brother Joseph A. Wapner, Tau Gamma 130.



Sight of 1983 Convention  
S.S. Veendam

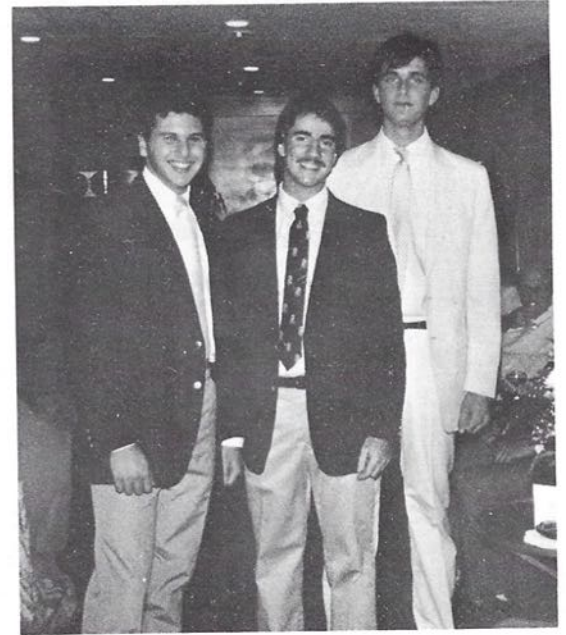


1983  
Grand Chapter





Dave Katz, Mrs. A. J. (Jayne) Schiff



Kraph (Ga.), Schultz (Ga.), Olson (Bryant)



1984 Undergraduate of the Year  
Jeff Gordon (Illinois), Schiff, Versacci



Swaby (C.C.N.Y.), Alvarez (C.C.N.Y.)  
and (Al's) Sarah Versacci





Outstanding Chapter awarded to Bradley University  
Kunin accepts from Versacci



Executive Sessions — Rear: Iantorno (N.J.I.T.),  
Boyle (Rutgers), Beasley (R.I.T.), Charpentier (Cal Poly).  
Front: Versacci, Olson (Bryant), Bosak (Penn State)

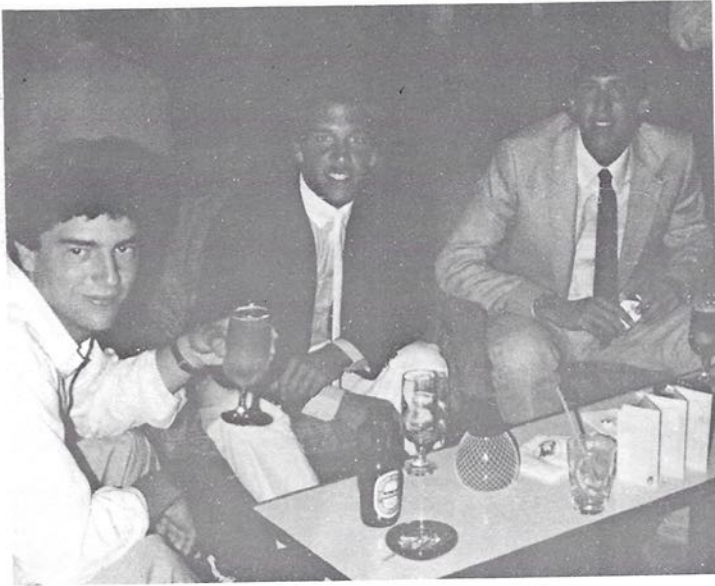


Two finalist in TEP "T" shirt contest  
Lola & Eva



Sid Sontag receives  
"50 Years of Service" award  
from current Executive Director Mike Ivers





Cocktail Time:  
Henschel (Florida), Adams (W.N.E.C.)  
and Nemroff (Tulane)



Captain's Buffet:  
Just another humdrum meal.  
Average weight gain per delegate — 8 lbs!



Outgoing Consul Al Versacci congratulates incoming  
International President Albert J. Schiff



**Nat Wolf  
Corporation  
P.O. Box 1708  
Lakeland, Florida 33802**

**CITRUS • CATTLE • SOD • FARMING • SEED**

***Bro. Leonard Wolf, President TA 124***

**REPRESENTED BY:**

**Bro. Michael Wolf, MU 439**

**Bro. Bruce J. Scheinberg, Tau Xi 578**

**Sister Susan Scheinberg, DØE, Miami**

**TRAINEES:**

**Jeremy Seth Scheinberg**

**Daniel Adam Wolf**

**Leslie Brooke Scheinberg**

Brother Leonard Wolf, Tau Alpha 124, has for the eighth straight convention purchased a full page ad in our Convention Program. His outstanding and continued contributions to our Fraternity, the Foundation, and his chapter has helped thousands of young men. In addition, Brother Wolf established the Leonard Wolf Award in 1971 given to the outstanding TEPman in the state of Florida. Brother Wolf is a past recipient of the Michael C. C. Lilienfeld Award as the fraternity's most outstanding alumnus.

*Thanks Lenny – Al Versacci*



**TAU EPSILON PHI is pleased to announce the selection of City of Hope as our National Charity Recipient beginning in Spring 1984. Our 1500 undergraduates will be involved in fund raising activities on behalf of the City of Hope.**

**We deem it an honor and privilege to work through this outstanding organization to help eradicate the suffering of mankind.**

### **A Nationwide Support Structure**

All this is possible because the City of Hope enjoys support from all segments of the American people. In hundreds of cities throughout the nation, chartered chapters, industry associations, unions, professional societies, civic and community organizations, support this Medical Center and Research Institute, furthering its goal to pilot in health and humanism.

Its multimillion dollar annual budget and New Horizons expansion under way for new buildings, new programs, new staff and new equipment are made possible by the generosity and endeavors of many hands, minds, and hearts in all parts of our land.

City of Hope programs have a universal, qualitative and original impact on human well-being. They are an attempt to translate into action the nation's highest ideals — love of one's fellowman, the sense of mutual responsibility, an abiding respect for life and a desire to enrich and enlarge it.

Our willingness to help each other is the answer to cynicism, indifference and intolerance. The City of Hope believes that the measure of a society is not how high it rises in steel and concrete but how it bends in concern... and that health, too, is a human right for all.

### **A Pilot Medical Center**

To relieve pain and prolong life are the major goals of the City of Hope. Thousands of discoveries have come from its staff, unceasingly probing the mysteries of life, seeking new methods of diagnosis, treatment, and prevention of cruel ailments. Publication in professional journals, presentations at national and international conferences, and recognition by governmental and private agencies have helped influence medical and scientific endeavors everywhere.

City of Hope research scientists have piloted in genetic engineering. They were first to synthesize a gene that successfully "commands" laboratory bacteria to manufacture human insulin and, earlier, still another gene for the growth hormone, somatostatin — both pioneering steps toward bacterial mass production of additional medically useful hormones.

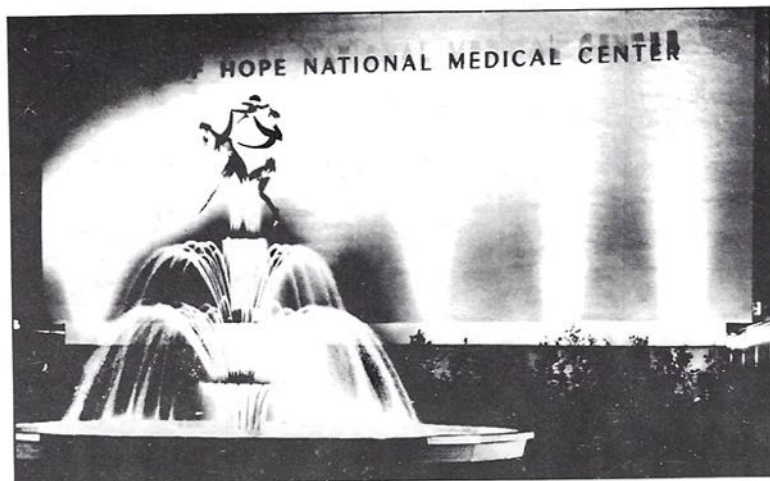
Illustrative of other City of Hope "firsts" are new medical instrumentation, innovative diagnostic tests for hereditary diseases in newborn babies, for blindness and cataracts in youngsters, and for emphysema in adults. Also new and more effective procedures in surgery, radiation and chemotherapy and fresh findings on the workings of the body's immune mechanism.

Through research, the hand of hope can be extended to the millions who are threatened by, or are actually suffering, the ravages of the many diseases treated by the City of Hope... as well as in investigations in genetics, brain and nerve functions, lupus, Huntington's disease, epilepsy, etc. New projects are inaugurated regularly, the most recent being cancer immunotherapy, bone marrow transplantation and occupational diseases... all holding great promise for the prevention and care of victims of catastrophic diseases.





# The *City of Hope* Story

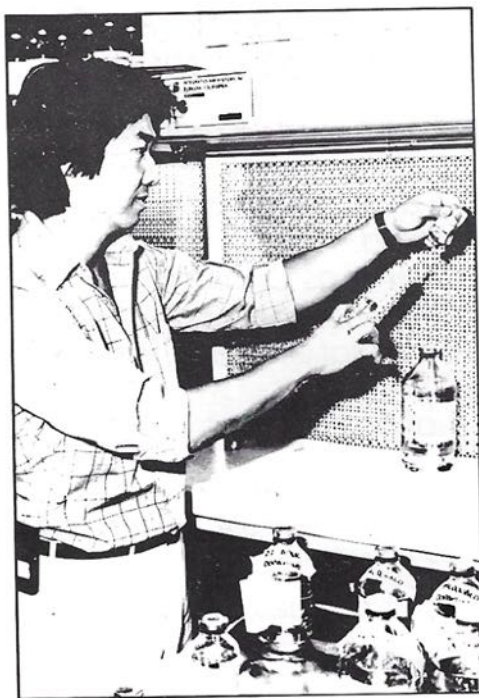


## A Think Tank For Hospitals

Because its procedures and findings are applied in hospitals throughout the country and world, the City of Hope has been called a "hospital without walls" and a "hospital's hospital." This reflects its acceptance of a unique responsibility, not only for patients coming to its doors, but for those who come to medical institutions everywhere.

City of Hope task forces study all phases of hospital functioning for the purpose of developing more progressive, more economical, more efficient, and more satisfying methods of treatment.

In the face of skyrocketing health care costs and reduced governmental allocations, the City of Hope is pioneering in showing hospitals how to reduce operating costs, alleviate personnel shortages, eliminate medication errors, provide more advanced outpatient facilities and home treatment, increase patient safety and effective ways to include the patient's family in the treatment process within the hospital environment.



## A Consultation Service

The expertise of the Medical Center staff is available to private physicians and institutions on behalf of their patients, both here and abroad. A panel representing the various medical disciplines meets regularly to give supplemental counsel on diagnosis and therapy.

In addition, this Consultation Service speeds the findings of the City of Hope staff into the hands of those who can apply them directly.

We congratulate Tau Epsilon Phi and  
the election of Albert J. "Bud" Schiff as  
International President

You are indeed fortunate to have the services and talent  
of this outstanding leader and businessman

## ***You don't reach the top of the table with just your ordinary bottom line.***

Albert J. "Bud" Schiff, CLU, has just completed his year's term in perhaps the most prestigious position in the life insurance industry. Chairman of the elite "Top of the Table" of the international Million Dollar Round Table.

Of the 21,000 Round Table members from approximately 40 countries, only about 500 qualify for each year's Top of the Table honors. This places Top of the Table members among the top 1/10 of 1 percent of all professional life insurance producers in the world. And last year's select group elected Bud Schiff to the highest honor of all.

Bud specializes in retirement income

planning and tax-advantaged deferred capital accumulation, serving clients ranging from companies with a single employee to corporations with tens of thousands.

Since 1969, he's won virtually every award our company and our industry can bestow. And he's rewarded us with the kind of bottom-line performance you only get from a man who's recognized as tops in his field.

By choosing Bud Schiff as Chairman of the Top of the Table, his peers honored him in a very special way. But then, he's a very special person. And we're deeply honored that he chose MONY.



THE MUTUAL LIFE INSURANCE  
COMPANY OF NEW YORK  
1740 BROADWAY  
NEW YORK, NEW YORK 10019

Albert J. Schiff Associates, Inc., 55 Charles Lindbergh Boulevard, Mitchel Field, CS 101, Uniondale, NY 11553  
Phone 516-228-6900

An advertisement in FORTUNE'S February 21, 1983 New York Metro Edition



# NOW — A wide range of coverage with the new TEP insurance program.

(Arranged by Marsh & McLennan Group Associates, Inc.)

- ★ GROUP LIFE
- ★ MAJOR MEDICAL
- ★ HOSPITALIZATION
- ★ DISABILITY
- ★ ACCIDENTAL DEATH/DISMEMBERMENT
- ★ GROUP UMBRELLA PLAN

TAU EPSILON PHI's Group Insurance Plan offers you greater flexibility with the insurance you need, the way you want it, at a price you can afford.

*For complete information, fill in the coupon below.*



MARSH & McLENNAN GROUP ASSOCIATES  
1211 Avenue of the Americas  
New York, New York 10036

Please send me information and an application for the Group Insurance Program

NAME \_\_\_\_\_

NAME OF ORGANIZATION \_\_\_\_\_  
IF OTHER THAN YOUR NAME

ADDRESS \_\_\_\_\_

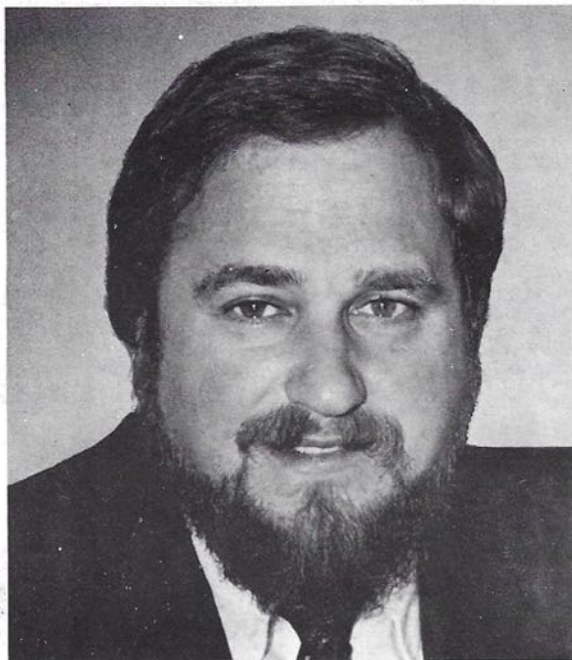
CITY \_\_\_\_\_ STATE \_\_\_\_\_

Arranged by:

Marsh & McLennan Group Associates

TAU EPSILON PHI

# Meet Your New Consul



**Albert J. "Bud" Schiff**

Albert "Bud" Schiff, Omega 383, graduated from the University of North Carolina in 1964. While at Chapel Hill, he excelled in scholarship and athletics and served as Chancellor of the Omega Chapter. Bud has

remained active in Fraternity affairs since graduating, and has served on the Grand Council for 16 years.

He is president and Chief Executive Officer of Albert J. Schiff Associates (AJS), which is an employee benefits consulting firm that specializes in providing planning, design, implementation and administrative services to corporate management and to the legal and accounting professions throughout the United States. AJS is a subsidiary of Societe Generale de Surveillance SA, headquartered in Geneva, Switzerland, a multinational conglomerate of more than 110 affiliated service companies located in 140 countries around the world.

Bud is current Chairman of the International "Top of the Table," and Divisional President of the Million Dollar Round Table. Among his other noted positions is President of the New York City Chapter of the American Society of Certified Life Underwriters.

Our new Consul is a faculty member of numerous professional tax institutes and frequent author of articles on benefit compensation and planning. Bud is also a Commander in the United States Naval Reserve.

Our new Consul makes his home in Stamford, Connecticut where he lives with his wife, Jayne, and their two children, Matthew 17, and Cara 9.

As Tau Epsilon Phi moves into exciting new programs designed to benefit our membership both active and graduate, we are indeed fortunate to have as new Consul and International President, Albert J. "Bud" Schiff.

TO PARENTS: Your son's magazine is sent to his home address while he is in college. We hope that you enjoy seeing it. But if he is not in college and is not living at home, please send his new permanent address to:

**Tau Epsilon Phi Fraternity**  
3272 Peachtree Rd., N.E., Suite 236  
Atlanta, GA 30305

Postmaster: Please send form  
3579 to the above address.

## CHANGE OF ADDRESS FORM

NAME \_\_\_\_\_  
STREET \_\_\_\_\_  
STATE \_\_\_\_\_ ZIP \_\_\_\_\_  
CHAPTER \_\_\_\_\_

PLEASE INCLUDE MAILING LABEL

Non-Profit Organization  
U.S. POSTAGE  
PAID  
ATLANTA, GEORGIA  
PERMIT NO. 1449