

FALL NEWS 1962

The PLUME

OF TAU EPSILON PHI



RUSHING:
LIFEBLOOD
OF THE
FRATERNITY

The Creed of Tau Epsilon Phi

TO LIVE in the light of friendship—to judge our fellows not by their rank nor wealth but by their worth as men—to hold eternally before us the memory of those whom we have loved and lost—to hold forth in the solidarity of our brotherhood the nobility of action which will make for the preservation of our highest and worthiest aim—and thus be true to the ideal of friendship—

TO WALK in the path of chivalry—to be honorable to all men and defend that honor—to fulfill our given pledge at all times—to be true to the precepts of knighthood and win the love and care of the women of our dreams—and thus be true to the ideal of chivalry—

TO SERVE for the love of service—to give unselfishly that which we may have to offer—to do voluntarily that which must be done—to revere God and to strive in His worship at all times—and thus be true to the ideal of service—

TO PRACTICE each day friendship—chivalry—service—thus keeping true to these—the three ideals—of the founders of our fraternity—this is the Creed of Tau Epsilon Phi.

Active Chapter Roll

Alpha Chapter
Gamma Chapter
Delta Chapter
Eta Chapter
Theta Chapter
Kappa Chapter
Mu Chapter
Nu Chapter
Xi Chapter
Omicron Chapter
Rho Chapter
Sigma Chapter
Chi Chapter
Psi Chapter
Omega Chapter
Tau Alpha Chapter
Tau Beta Chapter
Tau Gamma Chapter
Tau Delta Chapter
Tau Zeta Chapter
Tau Theta Chapter
Tau Iota Chapter
Tau Lambda Chapter
Tau Mu Chapter
Tau Xi Chapter
Tau Pi Chapter
Tau Rho Chapter
Tau Psi Chapter
Rho Delta Rho Chapter
Tau Omega Chapter
Epsilon Gamma Chapter
Epsilon Delta Chapter
Zeta Lambda Phi Chapter
Delta Upsilon Chapter
Epsilon Deuteron Chapter
Epsilon Eta Chapter
Epsilon Iota Chapter
Epsilon Lambda Chapter
Epsilon Rho Chapter
Epsilon Theta Chapter
Phi Lambda Chapter
Epsilon Mu Chapter
Epsilon Nu Chapter
Phi Gamma
Alpha Omega
Epsilon Kappa
Phi Eta
Alpha Beta
Sigma Phi
Epsilon Pi
Epsilon Xi
Kappa Zeta Phi
Epsilon Tau
Epsilon Sigma
COLONIES:
Alpha Kappa
Epsilon Phi
Epsilon Omicron

COLUMBIA UNIVERSITY
NEW YORK UNIVERSITY
CORNELL UNIVERSITY
TUFTS UNIVERSITY
BOSTON UNIVERSITY
UNIVERSITY OF VERMONT
EMORY UNIVERSITY
UNIVERSITY OF GEORGIA
MASSACHUSETTS INSTITUTE OF TECHNOLOGY
MCGILL UNIVERSITY
UNIVERSITY OF PENNSYLVANIA
SYRACUSE UNIVERSITY
UNIVERSITY OF MICHIGAN
UNIVERSITY OF ILLINOIS
UNIVERSITY OF NORTH CAROLINA
UNIVERSITY OF FLORIDA
UNIVERSITY OF MARYLAND
UNIVERSITY OF SOUTHERN CALIFORNIA
OHIO STATE UNIVERSITY
UNIVERSITY OF MAINE
GEORGE WASHINGTON UNIVERSITY
DALHOUSIE UNIVERSITY
PURDUE UNIVERSITY
UNIVERSITY OF CONNECTICUT
UNIVERSITY OF MIAMI (Fla.)
UNIVERSITY OF MASSACHUSETTS
FLORIDA SOUTHERN COLLEGE
NEWARK COLLEGE OF ENGINEERING
ILLINOIS INSTITUTE OF TECHNOLOGY
UNIVERSITY OF RHODE ISLAND
NEW YORK UNIVERSITY, HEIGHTS
DARTMOUTH COLLEGE
TEMPLE UNIVERSITY
DUKE UNIVERSITY
FLORIDA STATE UNIVERSITY
DREXEL INSTITUTE OF TECHNOLOGY
RENSSELAER POLYTECHNIC INSTITUTE
COLLEGE OF CITY OF NEW YORK
BROOKLYN COLLEGE
QUEENS COLLEGE
LONG ISLAND UNIVERSITY
HUNTER COLLEGE
ROCHESTER INSTITUTE OF TECHNOLOGY
WAYNE STATE U.
BARUCH COL. C.C.N.Y.
TULANE UNIVERSITY
JOHNS HOPKINS UNIVERSITY
AMERICAN UNIVERSITY
C. W. POST COLLEGE
MARIETTA COLLEGE
CLARK UNIVERSITY
NORTHEASTERN UNIVERSITY
BRADLEY UNIVERSITY
UNIVERSITY OF TAMPA
ADELPHI COLLEGE
PENNSYLVANIA STATE UNIVERSITY
PRATT INSTITUTE

627 W. 115 St. New York 25
102 West 3rd St., NYC
306 Highland Road, Ithaca, N. Y.
9 Teele Ave., Somerville 44, Mass., c/o Tufts Univ.
207 Bay State Road, Boston, Mass.
389 College St., Burlington, Vt.
P.O. Box 666, Emory U., Atlanta, Ga.
150 Baxter St., Athens, Ga.
253 Commonwealth Ave., Boston, Mass.
3641 Oxenden Ave., Montreal, P.Q., Can.
3634 Chestnut St., Philadelphia, Pa.
320 Euclid Ave., Syracuse, N. Y.
915 Oakland Ave., Ann Arbor, Mich.
105 East Armory, Champaign, Ill.
216 E. Rosemary St., Chapel Hill, N. C.
P.O. Box 3528, University Station, Gainesville, Fla.
4607 Knox Rd., College Park, Md.
745 W. 28th St., Los Angeles, Cal.
1968 Indianola Ave., Columbus 1, Ohio
380 College Ave., U. of Maine, Orono, Maine
2006 G. St. N.W., Washington, D.C.
286 South St., Halifax, N. S.
136 Littleton St., West Lafayette, Indiana
University of Connecticut, Storrs, Conn.
1541 Brescia Ave., Coral Gables, Fla.
418 N. Pleasant St., Amherst, Mass.
127 Lake Hollingsworth, Lakeland, Florida
142 Warren St., Newark, N. J.
3330 S. Michigan Ave., Chicago 16, Ill.
22 Campus Ave., University of Rhode Island, Kingston, R. I.
15 Webster Ave., Bronx, N. Y.
2002 N. Broad St., Philadelphia, Pa.
Box 4741, Duke Station, Durham, N. C.
Box 3071, F.S.U., Tallahassee, Fla.
208 N. 35th St., Philadelphia, Pa.
57 Second St., Troy, N. Y.
c/o CCNY, New York, N. Y.
900 E. 21 St., Brooklyn, N. Y.
41-20 162nd St., Flushing, L. I., N. Y.
350 Livingston St., Brooklyn, N. Y.
c/o Hunter College, Bronx, N. Y.
65 Plymouth Ave. South, Rochester, N. Y.
648 Paluster Ave. W., Detroit 2, Mich.
25 W. 23 St., N. Y. C.
7113 Freret St., New Orleans, La.
3124 Guilford Ave., Baltimore, Md.
Box 651, American University, Washington, D. C.
P.O. Box 247, C. W. Post, Greenvale, N. Y.
106 N. 7 St., Marietta, Ohio
Box 821, Worcester, Mass.
Northeastern U., Boston, Mass.
1531 W. Fredonia, Peoria, Ill.
Box 3, McKay Hall, University of Tampa, Tampa, Fla.
c/o Adelphi College, Garden City, N. Y.
c/o Epsilon Phi Colony, Penn State, State College, Pa.
336 Ashland Place, Brooklyn, N. Y.

THE PLUME OF TAU EPSILON PHI

VOLUME XLV

FALL NEWS 1962

NUMBER 2

THE PLUME

Is the official publication of
Tau Epsilon Phi Fraternity.

Ron Bratspis, Editor

Ron Drogin, Associate Editor

Sidney S. Suntag, Managing Editor

Jack A. King, Publications Chairman

Address all communications to THE
PLUME of Tau Epsilon Phi, Editorial Of-
fice, 130 W. 42nd St., New York 36, N. Y.

Published quarterly until further no-
tice by Tau Epsilon Phi Fraternity, Inc.,
at Leland Publishers, Inc., The Fraternity
Press, 2642 University Ave., St. Paul 14,
Minn., official fraternity publisher. Edi-
torial Offices, 130 W. 42nd St., New York
36, N. Y. Mailed regularly to National
Chapter members, dues \$5.00 per year,
which includes membership of \$2.00 and
subscription of \$3.00. Second class postage
paid at St. Paul, Minnesota.

LETTERS TO THE EDITOR

Letters to the editor are
always welcomed both on
topics of interest to the fra-
ternity as a whole and com-
ments and criticism of the ma-
terial and layout of the mag-
azine.

Correspondence intended for
publication should be typed
on 8 1/2 by 11 paper, double-
spaced on one side of the
sheet only. Please keep your
letters as brief as possible. If
any brother feels he can't say
what's on his mind in less than
a thousand words, just send a
summary and if it is deemed
of general interest, we will
publish the material as a full
length article with byline.

Why?

As the midyear rushing season ap-
proaches, every undergraduate
brother must be prepared to answer
the question of many a rushee, Why
should I join a fraternity? and, Why
should I join Tau Epsilon Phi? Re-

printed below is the answer to that
question, as contained in an essay
written by a pledge of Tau Lambda
(Purdue), Leland Koch, explaining
why he wanted to become a brother
of Tau Epsilon Phi.

Throughout history, whenever
man has helped man, a feeling of
brotherhood has been established.
From the earliest cave men living to-
gether for food or protection against
a common enemy to the medieval
guilds bound together by a common
trade, man has helped man. Today
this feeling of brotherhood is best
brought out by the various fraterni-
ties existing throughout the nation
and the world.

Fraternity, meaning fraternal, has
always been the password of those
with similar interests in the worth
of their fellow man.

To me, Tau Epsilon Phi is an ex-
ception to the general order of fra-
ternities only insofar as it is above
the others. It represents a group
originally started in protest against
intolerance. Although affiliated with
a particular faith, it shows its deep
regard for brotherhood by allowing
no restrictions as to a member's race,
religion, and creed. Far too many
fraternal groups do make restrictions
thereby going against the very word
fraternal—a word which they should
heed.

Tau Lambda chapter in particular
has impressed me as to the true
feelings of all "Teps." While not
living in the finest building with the
best furnishings, the brothers show
an unending feeling of giving aid

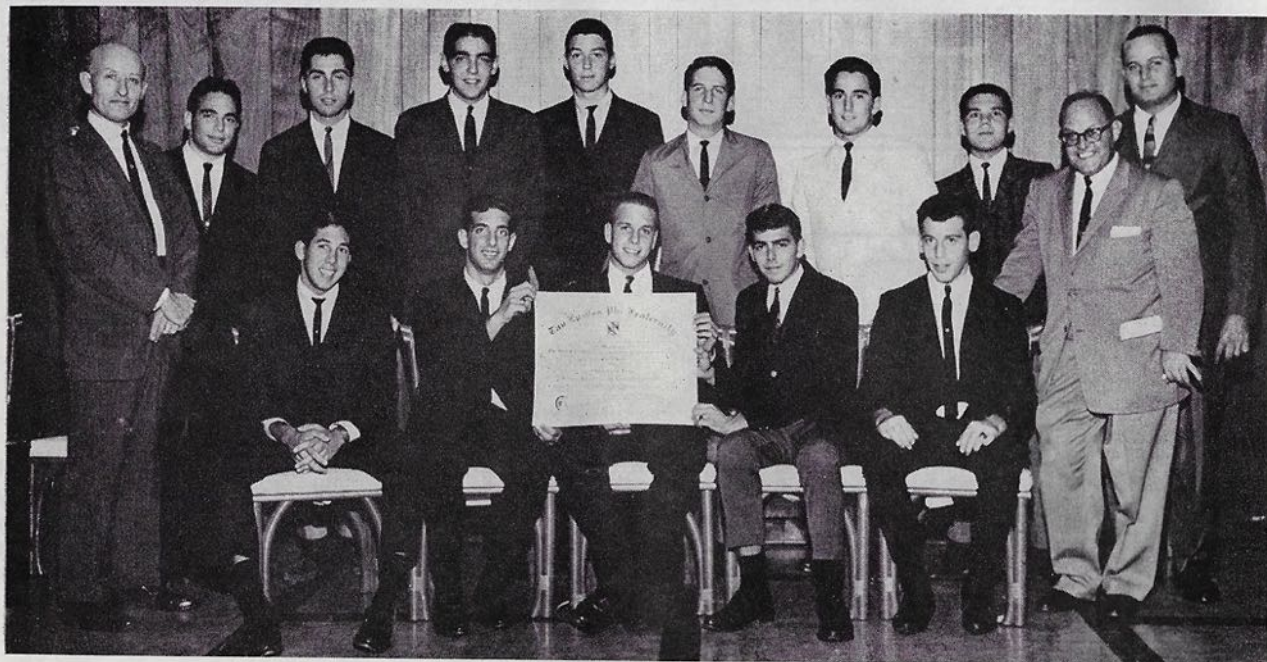
and friendship to their fellow broth-
ers. I believe that this manifestation
of true fraternal friendship, if repre-
sented here, is equally represented in
all Tep chapters. This is my main
reason for wanting to become a
member of Tau Epsilon Phi.

My other reasons are numerous,
but just as important. One is the
closeness of the brothers, a contrast
to the aloofness some fraternities
practice. Another is the deep feeling
of service not only to the fraternity
in itself but also to the school as a
whole as well as all its members.
This is in keeping with the true fra-
ternal spirit of help to all fellowmen.

Finally the creed of Tau Epsilon
Phi is one which I respect as an
example of a true guide to living.
Its three ideals of friendship, chiv-
alry, and service are truly words to
live by—thus another reason for my
wish to be a member of this frater-
nal group.

In closing may I say that the very
essence of true respect and regard to
one's fellowmen is carried out in no
better way than in true, unselfish
fraternal living. Tau Epsilon Phi
has shown to me that even in our
modern world with its dangers pre-
viously unknown by man, there are
still individuals who are willing to
stand for rights of all men. This is
why I want to be a member of Tau
Epsilon Phi.

Epsilon Sigma Chapter Installed at Tampa



Jeff Himmel, chancellor of Epsilon Sigma, receives his chapter's charter from Consul Joe Gerson (right). The 12 charter members of the chapter sit for their first formal portrait, flanked by Sidney S. Suntag, executive secretary, and Bro. Gerson.

TEP Becomes Largest National In Florida

Tau Epsilon Phi became the largest fraternity in the state of Florida on November 7, when the pledge colony at the University of Tampa was installed as Epsilon Sigma chapter, the fifth TEP chapter in the Sunshine State.

In ceremonies attended by Consul Joe Gerson; Sid Suntag, executive secretary; 50 alumni from the Tampa Bay area, and the entire brotherhood of Tau Rho chapter (Fla. So. University), 12 men were inducted as brothers and received the chapter's charter as the 54th currently active chapter.

Following the installation ceremonies, a banquet, hosted by the Tampa Alumni Association, was held in the famous Hawaiian Village in Tampa. Arrangements for



the banquet and installation ceremony, which was also in the Hawaiian Village, were handled by Phil Brinin, Joe Schwartz and Ted Taub, of the Tampa Alumni group. Dave Hyman (Tau Alpha) was master of ceremonies for the evening.

In addition to Bro. Gerson, who made a special trip to Tampa to present the new chapter's charter, and Bro. Suntag, other digni-

taries in attendance included: Leonard Wolf, regional vice-consul for Florida; Michael DeCarlo, dean of men at University of Tampa, and Rabbi Zielonka, advisor to Epsilon Sigma and faculty member at the university.

Epsilon Sigma began as a local fraternity, Sigma Tau Upsilon, last year, and at the time of installation had 12 members, most of whom are

Continued on Page 10

PLUME

Miami Beach Convention Details Set

Details of the 1963 Convention were announced recently following a meeting of the Convention Committee attended by Consul Joe Gerson and Executive Secretary Sid Suntag.

From all indications, the convention, to take place August 25-29 at the Carillon Hotel in Miami Beach, Florida, will be the "best ever" in accommodations, programming and, at least of equal importance, cost.

The convention will feature a major event each evening with special rates for South Florida alumni and undergraduates who will not be living in the convention hotel. Also, there will be no registration fee for any participants.

For those wishing to make the 4-day convention period part of a longer vacation at the Carillon, special rates will be in effect.

The convention will open on Sunday evening, August 25, with a cocktail party given by the hotel, and following dinner, the committee has arranged entertainment for the balance of the evening.

Monday evening, August 26, a

Luau has been arranged which will include a full menu of exotic Polynesian foods and a Hawaiian band. This event will take place at poolside under the stars, and will feature dancing, costumes and a midnight swim.

The Awards Dinner-Dance will be the feature on Tuesday evening, August 27. This function will take place in the ballroom of the Carillon and will be completely private. National awards will be presented during the program.

The convention will come to a close officially with the traditional formal banquet and dance on Wednesday evening, August 28.

The setting for this event will be the world-famous Cafe Le Can-Can, at the Carillon, which has been reserved for our private use. Included in the program will be a private showing of Lou Walters' review, "Scandales de Paree."

The full program, plus modified American Plan (two meals daily), will be available at the following rates:

Continued on Page 10

DEADLINE MARCH 1 FOR SWEETHEART, ATHLETE ENTRIES

Undergraduate chapters are urged to hurry with their nominations for National Sweetheart and TEP Athlete-of-the-Year honors.

Deadline is March 1, 1963, for entries in the contests to select recipients of the two new awards to be announced at the 1963 Convention. It should be noted that the deadline for these two awards is well in advance of the date on which reports for other national awards are due.

For the athlete award, chapters are asked to submit a picture and story concerning the member of their chapter whom they feel is the best athlete in both intramural and varsity sports.

Women nominated for the Sweetheart award will be featured in coming issues of THE PLUME and the Sweetheart and her court will be included in the Convention Issue. A

Continued on Page 10

The
C
A
R
I
L
L
O
N
H
O
T
E
L



'Remembrance Fund' New Student Aid Plan

Creation of a new program to encourage gifts in any amount to the Scholarship and Student Aid Fund in honor of special occasions was announced by Dr. A. I. Cohen, president of the fund.

Gifts to the fund, to be called the Remembrance Fund, will be acknowledged by a special card to be sent to persons named by the donor.

The fund is appropriate for commemorating all joyous events, such as weddings, anniversaries, birthdays, graduations, births, recovery from illness, etc.

The Remembrance Fund will be a companion to the Memorial fund already established. For many years gifts made in memory of departed brothers and friends have been acknowledged by an appropriate card. With creation of the new program, brothers will be able to commemorate good fortune in their lives or of their loved ones in a manner which will brighten the life of an undergraduate brother in need of financial aid.

The Scholarship and Student Aid

Fund has been hard pressed to help all the deserving undergraduates who have requested aid for the current year. It is hoped that the chance to mark the many joyous occasions of a lifetime in a fraternal and charitable manner will be utilized by an increasing number of brothers so that in the future no deserving student must be denied aid.

In addition to the acknowledgment of gifts to individuals concerned, the names of contributors to both funds will be placed in a special column to be published in each issue of the PLUME.

An important advantage of contributing to the Scholarship and Student Aid Fund is that all gifts are tax-deductible. Contributions of any size are welcomed. Save the accompanying form to submit with your gift or send the necessary information along with your check to: Tau Epsilon Phi Scholarship and Student Aid Fund, 130 W. 42nd St., New York 36, N. Y. Checks should be made payable to: Tau Epsilon Phi Scholarship and Student Aid Fund.

Bob Evans Has Key Role for Telstar Program

Robert M. Evans (Omega) was director and coordinator for the first intercontinental live television broadcast, utilizing the Telstar satellite.

Administrative assistant to Edward R. Murrow, director of the United States Information Agency, Bro. Evans spent several months planning and arranging the details of the program with personnel of the three U.



BOB EVANS

Enclosed is my contribution to () Remembrance Fund
() Memorial Fund

In Honor of

In Memory of

Please notify—Name

Address

Donor

Address

Send contributions and make checks payable to:

Tau Epsilon Phi Scholarship and Student Aid Fund

130 W. 42nd St., New York 36, N. Y.

Contributions are tax-deductible

S. networks and 35 networks in foreign countries.

The involved planning operations made Bro. Evans a regular air commuter to Europe during the several months preceding the program last July.

His work on the Telstar program is not the only one of his activities which brought Bro. Evans in contact with headline events. Prior to working on the satellite project, he represented USIA on a special mission to Berlin in connection with "Voice of America" broadcasts. He spent several weeks in and out of East Berlin and was present during the period when the Berlin Wall was being built.

Before joining USIA in 1961 Bro. Evans was a writer with the Columbia Broadcasting System. When Murrow left CBS to take over USIA, he asked Bob Evans to come to

Continued on Page 8

PLUME

New Kappa Zeta Phi Chapter House Opened

Over 30 years of determined effort have finally paid a dividend to the Kappa Zeta Phi (Northeastern) Chapter—A New House.

Although the house has been occupied since midsummer, it was officially opened recently with Dean Kenneth G. Ryder, Chancellor David Woolf, Chapter Adviser Bob Millerm and House Trustee Martin Shaevel cutting the ribbon. Many members of the school administration attended, including the deans of the colleges. National Tribune Erwin Cooper, a resident of the Boston area, was a special guest.

After the ceremony, the day was celebrated with an open house and buffet dinner. Many of the over 300 chapter alumni and guests were then taken on an escorted tour of the house.

The house is located at 402 Marlborough Street, Boston, which is within short walking distance of the University and the houses of Theta (B.U.) and Xi (M.I.T.) chapters.

The converted nineteenth century mansion has five floors with the three upper levels housing 25 occupants. The main floor is divided

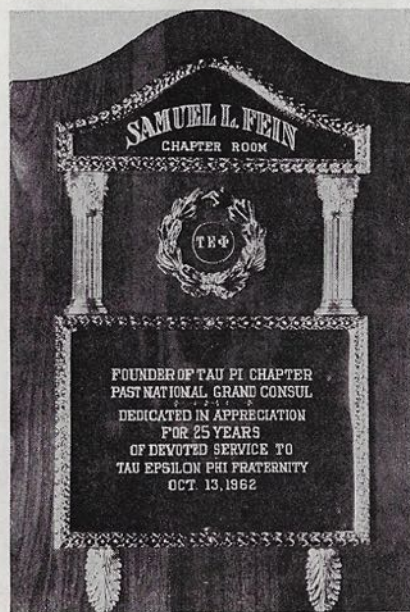
into two large rooms which are ideal for socials, and a room for the house-mother, while the sub-level contains a kitchen, dining hall, and recreation room for the brothers. The house was previously used as a dorm by the University, and is equipped with

ager and the steward to coordinate their activities and to solve any problems that arise. Members of the trustees are Martin Shaevel, Joe Weinrebe, Paul Witty, Dave Abrams, Burton Herman and National Tribune Erwin Cooper. Their success



Undergraduate and alumni brothers and school officials chat in front of the new Kappa Zeta Phi house after dedication ceremonies for the fourth TEP chapter house in the Boston area.

Tau Pi Chapter Room Dedicated to S. Fein



Shown above is the plaque which hangs in the new Tau Pi (U. of Mass.) chapter house, dedicating the chapter room to Samuel L. Fein, past consul of the fraternity and a founder of the chapter.

modern facilities in the kitchen and dining hall.

The 10-bedroom house is organized on a cooperative basis with each of its residents doing his share of the cleaning and upkeep. This includes everything from washing floors to emptying the trash cans. Everyone is assessed heavy fines for failure to do his part. Breakfast and dinner are prepared by the house-mother, who also packs lunches for those who request them.

Study hours run from 7 p.m. to 7 a.m., Sunday through Thursday, with strict regulations against unauthorized noise during those times. The chapter's executive board voted to ban freshmen living in the house from recreation areas during specified study times, in order to help these men maintain high academic ranking. The rules on excessive noise and freshmen in the recreation areas were imposed to insure that the new house is as conducive to study as possible.

A board of six alumni trustees aid the undergraduates in managing the house, handling financial administration and general policy. They meet regularly with the house man-

ager and the steward to coordinate their activities and to solve any problems that arise. Members of the trustees are Martin Shaevel, Joe Weinrebe, Paul Witty, Dave Abrams, Burton Herman and National Tribune Erwin Cooper. Their success

The positions of house manager and house steward are filled from the ranks of the undergraduate brothers. David Woolf and Bill Ogden are the co-house managers. Their job is to see to the daily operation of the house and to keep it running smoothly. They especially supervise the upkeep details of the residents. House Steward Al Sapoznick administers the kitchen facilities. He must order all the food, make sure that all utensils and serving implements are available and keep the kitchen operating efficiently.

The house contains various entertainment devices, including pinball machines, radios, television and a piano.

The 55 undergraduate brothers of the chapter, each one beaming with pride over his new home, have quickly adapted to the new venture, and have made it the center in which to enrich their fraternity experience.

Brust Elected to New York Judiciary

Joseph A. Brust (Gamma) has become the first TEP elected to the Supreme Court in New York City.

Judge Brust was elected in the November general election to fill a vacancy on the bench in the First Judicial District comprised of New York and Bronx counties.

He follows in the footsteps of Honorary Member Maximilian Moss who had been appointed to the Supreme Court in Kings (Brooklyn) County and has since been elected Surrogate.

Before his election to the Supreme Court, Judge Brust was a judge of the New York Civic Court, a post to which he was elected in 1960. At the time of his election to the latter post, he was a member of the law firm of Lynch, McManus and Brust.

Judge Brust has had a distinguished career of 35 years as an attorney and jurist. After graduation from New York University and NYU Law School, he joined a predecessor of the firm of which he was a member when first elected to the

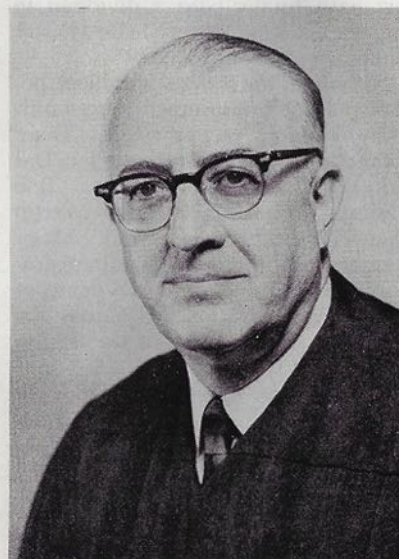
bench.

During 1936-37, Judge Brust was a special assistant to the District Attorney of New York. He was engaged in a special investigation sponsored by the Bar Associations in New York City.

In 1941, Judge Brust served as chief counsel to a special committee of New York City Council investigating discrimination in a municipal hospital.

A delegate to the Democratic National Convention in 1960, Judge Brust was chairman of the Law Committee of the Democratic Party in Bronx County and president of the Monroe Democratic Club.

Judge Brust was also counsel to the Bronx Borough President. He was chairman of the Grievance Committee of the Bronx County Bar Association and was a member of its Co-ordinating Committee on Discipline and is on the Board of Directors of the bar group. Active in communal affairs, he is a director of Hope of Israel Congregation.



JUDGE JOSEPH A. BRUST

Joe Stock Wins Georgia Award

Joe Stock (Nu) has been chosen to receive the Georgia Recreation Society's "Layman Award of Merit" for 1962. The award was presented at the society's annual meeting.

Brother Stock was recommended for the award by the city manager of LaFayette, Georgia, where he is a prominent businessman and civic leader. He was given the honor because of his numerous activities in the recreational field, particularly in the area of water sports.

Bro. Stock organized and has directed for eight years the LaFayette Lions Club city-county swimming meet. He initiated and has directed for six years the Jaycees Fall Festival Week held in LaFayette.

Prior to coming to LaFayette, Bro. Stock began the city-county swim meet in Rome, Georgia, and has continued to direct it for 14 years. He also started the Three Rivers AAU Swimming and Diving Meet in Rome and has conducted it for 13 years.

Bro. Stock conceived the idea of the annual Camporee-Swimoree for Boy Scouts of the LaFayette area and has directed that event for the past four years.

Alumni Active at Rho Delta Rho



Alumni of Rho Delta Rho (Illinois Tech) work closely with the undergraduates. Shown discussing the chapter's situation are (l. to r.): Henry Wasserstrom, Bob Hillman, Al Kraus and Don Elisberg.

... ALUMNI NOTES ...

Just Like Old Times at Alpha ...



Entertainment at the Fifty-First Anniversary Dinner of Alpha chapter included the hot piano of Charles Tobias (above) who was the writer for all the early TEP songs and is active in the Alpha Alumni group; and (left) the team of Len Korobkin and Saul Turteltaub performing one of their old acts. Brother Korobkin is an attorney and Bro. Turteltaub is entertainer Shari Lewis' top writer, when they are not performing at Alpha alumni events.

BERNARD BROTSKER (ZETA LAMBDA PHI) has been elected president of the Zeta Lam Alumni Association. Other officers include Harry Gelman, first vice-president; Fred Dolgonos, second vice-president; Elliot S. Silverman, secretary; Richard Halpern, corresponding secretary; Sheldon Prushan, treasurer; Issac Richman, bursar; Sheldon Elster, chaplain; and Sam Eisenberg, assistant chaplain.

JUDGE ROBERT F. NOVINS (OMEGA), youngest county judge
Fall, 1962

in New Jersey, officiated at the recent wedding of **HAROLD KAPLAN (OMEGA)** and Ulla Maria Nessen of Stockholm, Sweden.

DONALD STUART (TAU OMEGA) earned a "Million Dollar Key" award from his employer, The Equitable Life Assurance Society. Bro. Stuart was recognized for his achievement of underwriting more than one million dollars of coverage under Equitable's Assured Home Ownership Plan. He has been an underwriter since 1956.

FREDRIC R. MANN (RHO), past consul, is chairman of the Philadelphia area drive for contributions to the building fund of the National Cultural Center to be erected in Washington, D. C. Bro. Mann, who is City Representative and Director of Commerce for the city of Philadelphia, was in charge of the Philadelphia dinner which was part of the nation-wide drive, featuring a closed circuit television show starring some of the biggest names in the entertainment world. An amusing sidelight to the job which Bro. Mann did was contained in the series of letters he received from President Kennedy in reference to arrangements for the dinner. In the first letter, the President addressed him as "Dear Mr. Mann;" the second letter started "Dear Fred," and the third letter opened with a chummy "Dear Freddy."

JACK BIRNHOLZ (TAU XI) has been elected to the American Industrial Development Council, an organization of professional plant location men and industrial real estate men. Bro. Birnholz is the president of Jack Birnholz & Co., Newark, New Jersey, industrial real estate brokers. As a member of the council, he will participate in development of principles and ethics in the industrial development field.

JERRY LANDAUER (ALPHA) is covering the situation in Haiti for the *Wall Street Journal*. Before joining the *Journal's* staff, Bro. Landauer was a correspondent with the Washington, D. C., bureau of United Press International. He was the UPI man covering the U. S. Senate until he left for more exotic scenery.

STUART N. SPIZER (ALPHA) has been appointed director of market research for the *New Yorker* magazine. Bro. Spizer had been manager of marketing research for the *New Yorker* before his promotion.

PETE EHRENSHAFT (ALPHA) has completed his law clerkship in the office of Chief Justice Earl Warren and has joined Cox, Langford and Brown, a leading Washington law firm.

Evans With Telstar Program

Continued from Page 4

Washington as his administrative assistant.

Before joining CBS, Bro. Evans was associated with Radio Station WMCA, New York City, and wrote their editorials for a popular program known as "The Editor's Desk." He also wrote and produced several weekly programs including a program known as "The World in Review" which was syndicated to more than 50 stations in Canada and the United States.

He has had a varied career, traveling throughout Europe and Asia. He spent the summer of 1954 in Israel and, while there, toured the country and lived and worked on a Kibbutz. In 1956, he was a member of an expedition to Afghanistan. He was also involved in the Hungarian Revolution as a volunteer in border service in 1956, aiding refugees to escape from the Iron Curtain.

Bro. Evans is a graduate of the University of North Carolina, Oxford University in England, Yale

University Law School, and is a member of Phi Beta Kappa, Beta Gamma Sigma, honorary business school fraternity, and the Golden Fleece, the highest honorary organization at the University of North Carolina.

He was an outstanding debator at the University of North Carolina and one year won the National Oratorical Championship. While at Oxford University, he became the vice-chairman of the Oxford Union, the famous debating society of England that counts among its officers many English prime ministers and statesmen. This was an elective office and the first time in more than 25 years that an American was chosen. While at Oxford, he also played on the basketball team which won the English National Championship.

He served in the U. S. Navy for two years after graduation from the University of North Carolina and holds a commission as a Lt. (jg) in the Naval Reserve.

Loewenthal Named Bankruptcy Head

Herbert Loewenthal (Epsilon) has been elected president of the National Association of Referees in Bankruptcy.

Chief Justice of the U. S. Earl



HERBERT LOEWENTHAL

Warren presented Bro. Loewenthal to more than 1000 guests at the recent yearly conference of the association in Chicago.

A specialist in corporate reorganizations, Bro. Loewenthal has been a referee in bankruptcy for the Southern District of New York since 1949. He is a member of the National Bankruptcy Conference, a key policy making body.

Army Recruiting Officer for Northern and Eastern Maine at the Recruiting Station in Bangor. . . . Bro. Leonard Winderman, Temple, ranked Airman Third Class in the Air Force Reserve, has completed the cooking course at the Army Quartermaster School at Ft. Lee in Virginia. . . . Bro. Brian P. Hoffman, Miami, finished his advanced individual training under the Reserve Forces Act program at the Armor Center at Ft. Knox, Ky. . . . Bro. Arnold Stoller, Rochester Inst. Technology, a private, recently completed the personnel administration specialist course at The Adjutant General's School.

... TEPS in Service ...

Bro. Stanley Schlow, LIU, recently completed the personnel administration specialist course at The Adjutant General's School at Ft. Benjamin Harrison, Indiana. . . .

Bro. Leonard Primes, M.D., Columbia, a captain, completed the orientation course for air force officers at Gunter AFB, Alabama. He has been reassigned to the USAF hospital at Wright-Patterson AFB, Ohio, as a dentist. . . . Bro. Lawrence Fishman, Miami, an airman third class, is now at Homestead AFB, Florida, following his graduation from the Air Force technical training course for air freight specialists. . . . Bro. Richard J. Cohen, Columbia, a captain, completed the medical officer orientation course at the Medical Field Service School, Brooke Army Medical Center, Ft. Sam Houston, Texas. . . . Bro. Sheldon Gross, Maryland, a captain, completed the same course as Brother Cohen in learning combat medical procedures and emergency surgical techniques. . . . Bro. Richard Schatten, Vermont, a first lieutenant, recently finished the medical officer orientation course at Ft. Sam

Houston. . . . Bro. Stephen Turshen, Boston U., a first lieutenant, has been awarded U. S. Air Force pilot wings following his graduation from pilot training at Moody AFB, Georgia. . . . Bro. James Singer, So. Cal., an airman third class, has been assigned to O'Hare International Airport in Chicago following his graduation from the U. S. Air Force technical training course for electrical power production specialists. . . . Bro. Dr. Murray Leavitt, Maine, who recently came to active duty in the Air Force in the rank of captain, has completed the orientation course for officers of the medical service at Gunter AFB in Alabama. Dr. Leavitt is being reassigned to the 868th Medical Group at Goose AB, Labrador. . . . Bro. Jack Re Velle, Purdue, a first lieutenant, is stationed at Misawa Air Base in Japan. He is an ammunition disposal officer. . . . Bro. Mike Goldman, Northeastern, is serving with the National Guard in Northern France. . . . Bro. Nelson O. Newcombe, Maine, has been promoted to the grade of Captain in the army and presently assigned as U. S.

Louis Fein: 50 Years of Friendship and Service

Louis Fein, '19 of Alpha Chapter, was laid to rest on October 19, 1962. Tau Epsilon Phi suffered a great loss



LOUIS FEIN

and it appeared destined that his passing was on the day Tau Epsilon Phi was founded.

Over 50 years a member of Tau Epsilon Phi, he was known far and wide to the reaches of the fraternity. His membership and his appearances were continuous since his initiation. He kept in constant touch with the affairs of the fraternity throughout his span of life in TEP.

Two days before he passed away he visited the writer and said he was



BEN MASSELL

No one knew Brother Fein more intimately than Dr. I. Schwartz, and as a tribute to his memory, Doc has written this memoir to be part of the record.

feeling out of sorts, was due for a check-up and would see his doctor. The next day he was rushed to the hospital, reluctantly, saying he only had a pain in his back. But the doctor knew otherwise. He suffered a sudden and decided relapse and all measures to save him were in vain. He finally collapsed with an explosive cardiac condition.

He was a man of many moods and

talents and was very outspoken at times. He fought for the things that to him seemed important for TEP. He may at times have had some differences with some of us, but basically and fundamentally, these were the things he believed in and he would not be silenced and in the end seemed vindicated. But through all this he was for TEP in its fullest sense and exemplified the teachings and vision of our Ritual. This was the make-up of Lou Fein.

He liked to visit chapters and chapter houses and made this a must in his travels, taking upon himself the quasi-official status of a plenipotentiary of TEP. He attended many chapter installations and it

Continued on Page 10

Chapter Eternal

Bro. Ben Massell, Honorary, Atlanta, Georgia; served as trustee and president of Scholarship and Student Aid Fund of fraternity, a leading builder and real estate holder in Georgia.

Bro. David Hillman, Tau Upsilon 73, Los Angeles, California.

Bro. Irvin Savitz, Zeta Lambda Phi 27A, Wynnewood, Pennsylvania.

Bro. Dr. Edward Klein, Zeta 47, Perth Amboy, New Jersey.

Bro. Stan Tinter, Tau Xi 54, Miami, Florida.

Bro. Eliot Garber, Nu 403, Atlanta, Georgia.

Bro. William Sussman, Alpha 214, Miami Beach, Florida.

Bro. Abraham Polay, Beta 71, New York; painted the national fraternity crest.

Bro. Harvey Arron, Tau Iota 169, Halifax, Nova Scotia.

Bro. Barnett Sure, Honorary, Phoenix, Arizona.

Bro. Siler Freedman, Sigma 1, Schenectady, New York; business editor of *Look Magazine*

and a veteran Detroit newspaperman.

Bro. Lewis Rice, Tau Xi Associate, Coral Gables, Florida.

Bro. Arthur Kelem, Alpha Omega 76, New York, New York; an undergraduate critically injured in an accident while engaged in his summer employment in the Catskill Mountains.

Bro. Mark Segal, Omicron 144, Montreal, Quebec.

Bro. Abraham Laub, Gamma 26, Newark, New Jersey.

Bro. Edward Gold, Psi 53, Chicago, Illinois.

Bro. Ronald Selznick, Tau Xi 499, Staten Island, New York.

Bro. Henry Kaufman, Gamma 179, Yonkers, New York.

Bro. Lawrence Auerbach, Tau Beta 135, Roslyn, New York.

Bro. Samuel Alpert, Theta 66, Burlington, Vermont; long service to Kappa Chapter at Vermont.

Bro. Richard Garber, Nu 182, Atlanta, Georgia; died in auto accident.

A TEP For 50 Years

Continued from Page 9

was his pleasure to present a Bible to the chaplain of the chapter, with appropriate words of wisdom and guidance, and he stressed the importance of the meaning of the chaplain's duties in this respect. Respect and dignity were his theme, and friendship and brotherhood were his prologue and epilogue. He held many positions in our Council and its various branches over the years and for a long time was a member extraordinary without portfolio.

He kept in touch with us via his own post office system and his postcard route and the flow of these cards was never wanting. Every place he stopped, every TEP man he visited, every chapter he called on and the scenes of his travels were told to the recipients on these postcards. The familiar Spencerian script that he used and the graphic and artistic pen strokes of his pen became known to all of us as the personal characteristics of Lou Fein.

He was a charitable man. His charities included all faiths and races, and these were many. The writer once had occasion to glance at his list of charities and it was a bountiful list. He was a long-standing member of his Temple and a very active one. In these things he was faithful to his trust. In his religious beliefs he was very broadminded and would debate these with the Rabbis of his Temple. He had his own philosophical outlook and was an inveterate reader and collector of philosophic sayings of the oriental and occidental literature and quoted

these on many occasions.

After the loss of his wife, Jeanne, he lived a lonely life and was a lonely man, and never really could compose himself to this sort of life. He at times had lapses of despondency, and the pain and sorrow never left him. Life, after such sadness with some of us, heals somewhat with time, but with Lou the memory of his wife was part of his living.

In memory to his wife, Jeanne, he sponsored the "Louis Fein Chaplain Award," which is awarded annually to the Chapter of Tau Epsilon Phi Fraternity which by its acts and deeds on its campus and in its community has best fostered interfaith relations according to the Biblical injunction "Love thy neighbor as thyself."

To many of us he will be remembered for his invocations and benedictions at our banquets, affairs and conventions. He was no Rabbi, but the only thing he lacked in this respect was the cloak, for the heart and soul of him were made up of the same spiritual function and guidance.

He leaves with us a tradition, a tradition which will be remembered as the "Louis Fein Tradition" of loyalty, friendship, brotherly love, with respect and dignity.

He now rests in Chapter Eternal, but here on earth and in Tau Epsilon Phi his memory will always be with us.

THE NARRATING EXPOSTULATOR

Convention Details

Continued from Page 3

2 in a room \$48 per person

*3 in a room \$44 per person

*4 in a room \$40 per person

*undergraduates

The above prices include tips at all organized functions, free golf, boat rides, ladies programs, etc. for four full days. Children under 12 years of age in the same room as parents, \$7 per day or \$28 for the four days.

The special rates for the local men not staying at the hotel are as follows:

All events (3 functions)
\$25 per couple

INDIVIDUAL EVENTS

Luau \$12.50 per couple

Dinner-Dance—\$13 per couple

Banquet and show—\$15 per couple

The committee in charge of arrangements is under the leadership of Aaron Kanner (Tau Alpha). The vice-chairman is Stuart Blumberg, former Field Secretary. Others on the committee include: Richard Kanner, Ed Waronker, Dr. Wishner, Frank Solomon, Burt Kahn, Art Shandloff, Norman Rutkin, Jerry Greene, Larry Putzel, Ted Sakowitz and Irv Lebow.

Deadline March 1 For Sweetheart, Athlete Entries

Continued from Page 3

picture and information about the nominee are all that is required. Any photo will do, but portrait shots (wallet size) will make it easier for the judges. An example of the type of photograph desired is the picture of our featured sweetheart this issue, Merle Krausen, Zeta Lambda Phi's



MERLE KRAUSEN

entry. Miss Krausen, 20 years old, is a resident of Philadelphia and works as a research technician at Children's Hospital. She is engaged to Mike Richman, chancellor of ZLP.

Epsilon Sigma Installation

Continued from Page 2

sophomores. Freshman rushing takes place in February, at which time, the chapter membership is expected to be considerably expanded. It is also anticipated that the new group will acquire a house during the coming year.

Charter members of Epsilon Sigma are: Chancellor Jeff Himmel, Fred Weinberg, Steve Bronstein, Ken Smith, George Rose, Jeff Simon, Alan Epstein, Allan Kalsmith, Michael Gerber, Bruce Kimmel, Howard Yegidis and Gerald Chasic.

PLUME

Midyear Rushing, 1963 Style

Long-Range Planning and Preparation — The Keys to an Effective Program

From the Beginning ...

TEPS AT TROY



The Story of Tau Epsilon Phi

The cover of Tau Gamma (So. Cal.) rushing brochure is simple but effective. The "Troy" reference is a play on the school's nickname—the Trojans.

On The Cover

This issue's cover photo shows Mike Rosenberg, Epsilon Nu (Rochester Tech), showing rushees one of the chapter scrap books. This particular book is filled with the activities and good times had by the preceding pledge class. Through the use of this book, the rushee can see that pledging is a period of fun as well as a serious preparation for Brotherhood. Also, the rushee can see men he knows on campus who are members and has an idea of where he can get information if he wishes.

Midyear means rushing at most chapters, and for many this is the main rushing period of the year.

A survey of many chapters around the country reveals that in this modern day and age, rushing requires a careful, extensive program and the interest and effort of all brothers.

One item in a good rushing effort is a pre-rush seminar for the brothers, which was used in the fall by Epsilon Eta (Drexel) chapter. Dur-

ing this COMPULSORY session, the experienced and best rushing practitioners explained the fine points to the less experienced and new brothers. This is important since the new men have the best contacts among the uncommitted freshman and underclassmen.

Another important part of a pre-rushing seminar is a discussion of the financial facts. Many brothers have little if any idea of the true costs of being in the fraternity, and nothing chills a rushee faster than getting conflicting estimates.

A second part of the pre-rush preparation is the compilation of a pamphlet, brochure or other publication to hand out to rushees. The rushing parade from one house to another can leave the rushee with a confused jumble of impressions which some sort of a souvenir of the TEP house can dispel.

Another memory jogging device and publicity gimmick are campaign buttons with the "TEPS are TOPS" slogan given out to rushees and worn on the campus by brothers and friendly coeds. Zeta Lambda Phi used these in past rushing periods, as well as lavender Tyrolean hats, which are printed with the slogan.

A final item requiring planned activity is to use a novel method for advertising rushing events.

... to the End



Pledges at Mu (Emory) chapter gather for an informal portrait.

UNDERGRADUATE

Columbia

The beginning of the school year found the Alpha chapter with a new look. Physically, the house has been rejuvenated by paint, wallpaper, burlap and several newly-purchased rugs. The work, done entirely by the brotherhood, was concentrated on the social floor where both the living room and dining room were completely redone. In addition, the entire fourth floor was burlapped, as paint and plaster flew. The brotherhood also received assistance from the alumni in the form of furniture and a refrigerator.

On a more abstract level, new ideas abound as Alpha continues its tradition of "first with the most." Under the guidance of pledgemaster Art Lew, the pledging policy is being expanded in an attempt to illustrate more vividly the TEP ideal of service. On November 1, for example, a Hallowe'en Party was held for children in the St. Luke's Hospital Children's Ward. Also, the pledge class is working in conjunction with the city-sponsored West Side Area Services, a former training ground for Peace Corps members. Their duties cover a broad range, from checking for violations of the City Building Code to participating in the operation of study centers for "slow" school children. In addition, as a pledge project, our industrious lads are planning a benefit concert featuring a nationally known singing group, with all proceeds to be donated to the Columbia College Scholarship Fund.

Alpha's "Fahwahd Look" is by no means restricted to pledge policy. A Parents' Day is being planned in order to give our parents a more accurate idea of what "fraternity" means. A stepped-up social program is aimed at increasing the coherence of the brotherhood, as well as providing enjoyable evenings. Tickets for home football games are now purchased in a fraternity bloc; we also plan to drive en masse to Philadelphia for the Penn game.

Our social scene was highlighted by a Mount Olympus party at which

the brotherhood added many a new twist to Roman mythology. On the campus social whirl, TEPmen constituted the largest group from any fraternity at the annual Homecoming Ball.

The officers for this academic year are: Seymour Moskowitz, chancellor; Scot Blue, vice-chancellor; Charles Braun, bursar; Howard Perlstein, scribe; and Gary Cooper, historian.

GARY COOPER

N.Y.U.

On October 20, Gamma Chapter celebrated its fiftieth anniversary as an integral part of Tau Epsilon Phi Fraternity. Gamma is the second oldest active chapter within the fraternity, and is proud of a long record of success.

In beginning our second fifty years, we are moving forward in high gear under very capable officers and the gung-ho support given them by the brotherhood. Our officers this year include Stan Turetsky, chancellor; Art Morris, bursar; Joe Chasin, corresponding scribe; and Bob Klein, recording scribe.

After losing our old house in a fire last spring, Gamma acquired new quarters during the summer which includes two floors and is similar to a duplex apartment. Downstairs is a meeting room, party room, and living room; and upstairs there is the card-room, den, and kitchen.

Last March, Gamma inducted 17 new brothers. At the moment, the

chapter has a carryover pledge class from the spring, and new upperclass pledges. Because of a new school rule, no frosh will be allowed to pledge until after midterms in November.

Scholastically, Gamma topped the other 14 fraternities on campus last year. Many brothers achieved outstanding grades.

On campus, TEPmen are well known as Cal Wolfman is president of the Violet Fraternity Council; Stan Turetsky and Charles Bistany are senior delegates to the All-Square Congress; Bruce Mellon is Junior Class president; Richard Rosenblatt is Sophomore Class treasurer, and over 12 brothers were Violet Owls assisting in freshman orientation. In addition, Steve Epstein and M. Serota were elected to PSE, the Junior Men's honorary.

In athletics, Gamma won its opening football game and expects to finish highly if not win the overall intramural athletic trophy. Socially, Gamma's Friday night informals are proving a blast, and the chapter is sponsoring at least two theme parties on Saturday nights each month. On Thursday afternoons, "Twist Parties" are held in the quarters with coeds attending. At one such party, a steel band provided the music. In the future, Gamma will have a theatre party, the annual mother-son tea and father-son dinner, and the fourth annual formal weekend at the Laurels Country Club in Monticello not to mention a hayride and beach parties.

BRUCE SEITZ

Boston U.

Theta Chapter is looking forward to one of its best years at B.U. Under the leadership of Richard Sloane, chancellor; Steve Ross, vice-chancellor; Norman Kominsky, bursar, and Steve Rudin, scribe, we have already made great strides toward remaining number one on the campus.

Socially, we have held two teas. They were a success in the respect that they set the stage for the forthcoming social season. Already, we have had several house parties in our new extension, but the big event of the fall semester is yet to come. That



Brothers of Theta (Boston) chapter form a human pyramid in front of the chapter house.

CHAPTER NEWS

is TEP'S Homecoming during the weekend of the Boston University-Boston College game. Feature of the weekend will of course be the football game and our annual dinner-dance.

In athletics, we have yet to be beaten on the gridiron. With such outstanding boys as Bill Walsh, Dick Abrams and Steve Pomerantz we can't miss taking the all-University football trophy for the third year in a row.

We are also looking forward to acquiring some top pledges. Al Tapper, Bill Felton and Dick Goldberg, our rushing chairmen, have already made headway in lining up several boys for second semester rushing.

NORM SIRK

Vermont

Kappa Chapter is well into the fall semester at the University of Vermont. Spirit is at an all-time high and we are looking forward to a rewarding year. Some of last year's achievements are among our goals again this year. Like repeating our scoring two first places in skit competition at Kake Walk, the second oldest winter carnival in the United States. Only the combined effort of all the house made this possible. Terry Finkle and Steve Bernstein, our "walkers" last year, are back and ready for action.

Out of 16 fraternities at UVM, TEP placed second in scholastic averages. Dave Bederow kept us on our toes as scholarship chairman. We are looking for first place this year.

We have long been the "house with the best parties." The TEP rock and roll band, led by Chuck Lowenstein and Rick Nalin are tops. Not only do they play on campus but they just returned from an engagement at Colgate during homecoming.

Kappa is undergoing several minor revisions within the chapter house. Recently, the walls were panelled in the second and third floor halls. The chapter is now building a new television room, and in the near future expects to retille the bathrooms.

This year is marked by very capable leadership: Chancellor Neil Sherman, Vice chancellor Don Ru-

dolph, House Manager Harvey Tauber, Bursar Bill Perlow, Steward Arnold Wexler, and Scribe Dave Bederow. Much credit must be given to Steven Bernstein, rushing chairman, and Jack Lipkins, social chairman.

Rushing of prospective fraternity men is under a different system this year so we are all rushing hard. This is a major rebuilding year and we all realize the importance of a top pledge class. Instead of second semester rushing, it is carried out first semester with the exception of actual pledging.

Although this goes without saying, the TEP house is open always to members of Tau Epsilon Phi. We are in the heart of a fantastic ski resort, so feel free to spend a weekend with us anytime.

LARRY GREENBERG

Emory

After a year of preparation, Mu Chapter started rush week ready for the rushees and the tough competition which another campus fraternity usually provides. After the first day of rush, the chapter realized the freshman class had split into thirds. Two groups had already decided between the two fraternities vying for them, while the final group remained undecided.

When results were in Mu proved "TEPS ARE TOPS" once more by pledging 18 of the finest boys to wear a pledge pin at Emory in several years. Telegrams from alumni poured

in from all over the country offering congratulations. Following the official pledging ceremony, the brothers and pledges all adjourned to a fine dinner with high spirits.

The chapter got down to business by electing new officers. Leading as chancellor is Bill Cohen, Rockville Centre, New York, who did a splendid job as rush chairman. Vice chancellor is Steve Heitner who steps in from scribe to this second highest post, while Paul Schneider of Savannah assumes the position of scribe. Robert Blau, pledge warden, is looking forward to a full time job in bringing the new class through the portals.

The goals have been set for this year and the wheels are in motion for securing them. First in scholarship, tops in athletics, active in campus affairs, superior in party making and sincerely fraternal to all our brothers feature TEP at Emory.

STEVE RATNOW

Georgia

As the brothers of Nu chapter returned to school, results of the chapter's efforts last year were made official. Nu capped a great scholastic and athletic effort by finishing among the top four fraternities on campus scholastically, and wound up second in the athletic league.

During rushing a study of all fraternity scholastic averages for the past seven years at Georgia was published revealing that TEP had the highest scholastic average of all fra-



Pledges of Mu (Emory) chapter get into the spirit swiftly as Art Geffen and Doug Olins celebrate their induction on brothers' shoulders.

UNDERGRADUATE

ternities on campus during this period of time. Perhaps this had something to do with Nu pledging over 30 men during rush week, a class of both quantity and quality.

Thus far this year, athletics show considerable promise as Nu won its first two football games and opening horseshoe match. In one football clash, Nu defeated Sigma Pi's defending football and overall athletic league champions by a 7-6 margin. This victory was perhaps the greatest Nu football victory in some years.

Nu is showing an avid interest this year in Phi Kappa Literary and Debating Society as well as the Hillel Foundation. A TEPman attending a function of these organizations feels right at home.

There can be no question on campus on which fraternity excels socially. With members from other fraternities on campus always attending our parties, Nu had held three band and record parties after just three weeks of classes. One party had two bands playing simultaneously, one inside the house, and another playing on the patio with members and their dates alternating their time dancing to the music of each band. After the dance, it was claimed that members from every fraternity and sorority on campus had attended, and no complaints had been heard. Who can top such parties socially?

In the meantime, the chapter looks forward to homecoming when the fabulous "Tricks" will play one night and the IFC will be sponsoring

"Peter, Paul, and Mary," the second night. The chapter hopes a large group of alumni will be in attendance.

Earlier this year the chapter was saddened by the death of a fellow undergraduate brother, Elliot Garber, of Atlanta. We will miss him dearly.

This year could be Nu's greatest for the spirit is riding on a "rising curve," a sure sign of success.

MICHAEL MARRAN

Syracuse

As the brothers of Sigma returned to school, they looked for the 1962-63 school year to be the chapter's finest. Discussion quickly centered around prospects of getting land for the construction of a new house, or for obtaining adjacent property for building an addition. Before long, we hope for one or the other.

The brothers of Sigma anxiously awaited the start of intramural competition minus Walt Sofsian who will be performing for the Syracuse football varsity. Another brother, Al Roth, is expected to be the best diver on the swimming team.

The Sigmas could hardly believe the social season when they learned who social chairman George Altman had lined up for the semester. Included were the "Coasters" for Alumni Weekend, and the return of Bo Diddley who was so great last year. The latter party will be a joint one with three other fraternities on

campus. Coffees also were planned with campus sororities.

It was also apparent that TEP would lead all other houses in campus activities. The brothers looked forward to bringing home the trophy for Campus Chest Carnival that they have won for the last four years. The majority of returning sophomores were Goons during Freshman Orientation week and Alan Heifitz was elected Treasurer of the sophomore class. Alan Roth is treasurer of the Junior class, Tom Travis is a member of Traditions, and Mitch Mass and Herb Lustig are justices of the Student Court.

Illinois

Psi chapter is well on its way to another successful semester. We have pledged 24 fine young men and we expect all of them to be a credit to the fraternity as each participates in a campus activity.

The intramural football season is now in progress and for the fifth year in a row, Psi ranks first among the 58 Illini fraternities. Socially, Psi again holds its own as usual with the house entered in stunt show. By the end of the first month of the semester, TEP was involved in exchanges with the top ten sororities on campus, most of whom have members dating TEPs regularly.

Homecoming Week at Illinois saw Psi visited by over 50 alumni. Highlighting the weekend was a banquet attended by only members with



Brothers of Psi chapter (Illinois) pose with Chapter of Merit trophy (above) which they won jointly with Omega chapter (North Carolina) who received their trophy from Consul Joe Gerson (right).



CHAPTER NEWS

Alumni President Earl Price delivering a speech, and the repertoire of TEP songs being sung to the enjoyment of everyone.

Scholastically, Psi again rates among the top fraternities in grades. Chancellor Barry Friedman shows the way possessing a near perfect 5.00 average and ranks number one in the School of Commerce, and number seven for the entire University.

Last semester saw several of the members excel in intramural sports receiving special recognition at the year end. Howard Weinstein, James Schwartz, and Jerry Michaels made All-I.M. in football; Bob Briskman and past chancellor Ted Hershberg joined Gene Brodsky on the All-I.M. baseball squad. On the honorary basketball team, TEP was represented by Burt Rubenstein and Robert Polovin.

Madeleine Hellman, a Chicago gal, has been selected as the Sweetheart of TEP at Illinois. We hope Madeleine gains the nod as the national TEP sweetheart to be named soon.

JERRY MICHAELS

No. Carolina

Joe Gerson did it. It was just the other night during a house banquet when he said Nu chapter (University of Georgia) is figuring to be named TEP's best chapter this year. Omegamen could do nothing but accept this challenge to their supremacy among the TEP chapters of the land.

Of course we don't want to flout this inescapable brilliance, but we feel that the good brothers of Athens, Ga., ought to be aware of their competition. Anyone else so reckless as to brave a fight may also read this brief excerpt of a letter one of our new pledges wrote home recently.

Dear Mom and Dad,

I must tell you that I'm very excited about this fraternity, Tau Epsilon Phi. I feel that I'm pledging the best fraternity at Carolina, where there aren't any bad ones. How could I not go TEP?

They have finished in the top eight fraternities in scholastics every year in the past six. "Yack" Editor (annual) Lou Legum, a Senior Omegaman, pointed out that the senior and sophomore class treasur-

Fall, 1962

Maryland

When Tau Beta (Maryland) opened the doors this fall, the members displayed optimism from promise of great things to soon occur. This attitude soon bore fruition after four "wild" rush parties and one stag, and a pledge class numbering nearly forty. The pledges, hailing mostly from Baltimore, Washington, and New York, are considered the top pledge group on campus and include many highly sought after individuals.

The chapter also began the year with a new chef who is preparing some of the best food eaten within the chapter house in years. A graduate student is living in the house as advisor having replaced the housemother, and the new setup is meeting with everyone's approval.

Socially, under the guidance of social chairman Roger Kaplan, the chapter sponsors a party every weekend and desserts with leading sororities on campus each Wednesday evening. So far this semester, the most enjoyable party proved to be Homecoming with a large number of alumni attending. Early in December, Tau Beta held its annual winter formal at the Blue Crest North in Baltimore.

As the finals of the intramural athletic competition come to a close (the season starts at the end of football play each year), Tau Beta holds

a solid third place position in the IFC and is contending for the championship. In football, the chapter won the first four out of five games giving TEP a strong chance to take all honors.

In coming months, TEP will sponsor Maryland's annual Red Cross Blood Drive under the co-chairmanship of Don Gordon and Howard Diener. Recently, the chapter has been visited by Executive Secretary Sid Suttgart and Field Secretary Ron Drogin.

To prove that TEPs ARE TOPS at Maryland, Tau Beta has achieved various offices in the IFC. Among IFC officers are Joseph Forster, treasurer; Sam Switzenbaum, IFC rush chairman; David Sagal, historian; Roger Kaplan, research committee, and Robert Silverman, IFC rep.

Brother Gerry Greenspan is expected to star on the varsity basketball team. He averaged over 15 points a game last year.

New officers for this year include Samuel Switzenbaum, chancellor; David Sagal, vice-chancellor; Charles Ressin, scribe; Irwin Gellman, bur-sar; Bernard Salganik, warden; Roger Flax, historian; Don Gordon, chaplain; Richard Offin, parliamentarian; Steven Stadd, athletic chairman; Roger Kaplan, social chairman, and Richard Pomerantz, alumni advisor.

DONALD GORDON



Alumni and brothers of Psi (Illinois) chapter gather at Homecoming banquet. Shown between courses are: Len Lauter, Earl Smith, Alumni President Earl Price, Chancellor Barry Friedman and Shelby Kanarish.

ers, Jeff Guller and Paul Chused respectively, are actively participating in house functions even with their widening responsibilities.

You know, TEPs at Carolina are an unusual lot. They don't stay in the "house" as others do. As I said, several boys are campus officers, but

UNDERGRADUATE

they also work in class cabinets and scholastic honoraries. Terry Golden is the treasurer of AED, the pre-med society, and Alan Solter is president of the Sophomore class in the Pharmacy school. Of course, Phi Beta Kappa is well represented by David Cohen, chancellor of TEP. Lew Gikow added a new facet to the extracurriculars of Omegamen when he was recently chosen to be a cheerleader.

In my pledge class, I've really found some good friends. Mark Merkin is on a full basketball scholarship and has the highest College Board scores of any scholarship athlete at Carolina. Eliot Dworin, varsity soccer and wrestling, Al Dobritch and Al Bietler, both of whom are on the track squad, still have plenty of time to pledge, the way TEPs do things. All in all, we've got 13 of the best pledges on campus. I'm glad I pledged TEP.

But here we leave it, brother TEPs for your enjoyment and information. Omegamen accept all inquiries as to the veracity of the above, and humbly submit the following—"Challenge us you may, beat us, never."

KENNETH TOPPELL

Ohio State

Tau Delta at Ohio State rated highly in many ways last year. The chapter finished second in their league in all-campus intramurals. In doing so, Tau Delta added seven new trophies to our collection. Led by Martin Hirsch, TEP finished first in baseball league play; the chapter also won all volleyball games, and Steve Latz and Norman Eig finished runnerup in the all-campus tennis tournament with Bruce Kallenberg a winner in doubles play.

In other sports, Bob Vogel, co-captain of the varsity football team, started as offensive left tackle for the third consecutive year. Brother Vogel, who is 6-5 and weighs over 235, is also vice-chancellor of the chapter. Two of Ohio State's best wrestlers are Dave Romanoff and Gene Rosewater. Romanoff was captain of his high school team, a member of the O.S.U. frosh team, and the winner of the 145-pound intramural wrestling championship. Gene was a member of the varsity as a soph.

Socially, TEP as usual was tops

Dalhousie

Tau Iota got off to a spirited start this year with the following executives: Harold Medjuck, chancellor; Alan Silverman, vice-chancellor; Alan Stern, bursar; Zack Jacobson, scribe; Art Abelson, social chairman; Steven Pink, historian, and Lance Lewis, warden.

This year finds us with 24 active members and in the midst of our first rushing season under the able direction of Al Agar. The prospects look very encouraging for an active pledge class.

Art and Ken Abelson are both playing varsity football and are the mainstays of the defensive team. Melvin Brown is the president of the Inter-Fraternity Council and is showing the other fraternities that Teps are definitely Tops at Dalhousie.

Socially we have had a Welcome Back Party, a wiener roast, and then our Opening Smoker which officially began our rushing on campus. This year, since there are no Christmas

exams, our social season will continue right up until the Christmas vacation. Thus it looks as if Tau Iota, the outpost of Tau Epsilon Phi, is in for another banner year at Dalhousie University.

Purdue

Tau Lambda played host to numerous parents and alumni during Purdue's Homecoming Weekend. Included in chapter activities were a banquet, luncheon, and meetings of the Alumni and Mothers' Clubs.

During the summer, much of the chapter house was refurbished; almost all the study rooms, the living room and the "bum" room were repainted, much of the plumbing was repaired, the lawn was reseeded and a gravel parking lot was added.

Six men were pledged this semester even though only a very small group was going through rush.

Dave Neuberger, who won an extra-curricular activities key from National, has become a member of Omicron Delta Kappa, national



The newly renovated dining room at Omega (No. Carolina) chapter gets lots of use during Fall houseparty weekend.

on campus. We are the "dancing house" on campus and it showed at our Roman Toga party, South Seas party, and other novelty parties.

Talent was present in other forms. TEP has now won for the past two years a trophy presented by Hillel to the fraternity and sorority presenting the best skits. Last year, the "Tep-tones" (Marty Hirsch, Barry Zwick, Ivan Jaffe, Bob Vogel and Dennis Seaman) won top prize for their renditions of rock and roll and folk tunes.

Scholastically, TEP was without a peer. One quarter last year saw TEPS top all other OSU fraternities. This year promises added success under Dennis Seaman, chancellor; Bob Vogel, vice-chancellor; Roger Singer, scribe, and Mel Stone, bursar. A fine pledge class of over 25 has helped the spirit of the chapter (Jeff Schlom did a fine job as rush chairman), and with the same incentive to excel, Tau Delta could have its best year yet.

CHAPTER NEWS

leadership honorary.

New officers for this semester are: Robert Zweig, chancellor; Steve Jaffe, vice-chancellor; Steve Strom, bursar; Jim Shaevel, scribe; Fred White, warden; Harry Barron, rush chairman, and Mike Krane, social chairman. Brother Zweig follows in the footsteps of his father, Harold, who was chancellor of Tau Lambda in the late '30s. Brother Shaevel is also duplicating his father's career. Oscar Shaevel was scribe of Tau Lambda while attending Purdue.



Some of the coolest sounds along the Wabash come from this swinging quintet composed of brothers and pledges of Tau Lambda (Purdue).

Newark College of Engineering

The dream of every brother of Tau Psi chapter has been realized—we have our own Fraternity House! Over the summer, our executive board contacted the owners of several houses in the desired area and after some shrewd bargaining found a person willing to sell. An emergency meeting was held during the summer to inform the brotherhood of the news and start the proper committees functioning. The negotiations continued into the beginning of our school year until the final price was agreed upon by both parties.

The next step was to have our alumni form the all-important holding corporation. When news of the new house was revealed, the alumni met it with great enthusiasm and promised support all along the line.

Our next hurdle was a mortgage. Unfortunately we were turned down on our first attempt and morale dipped to an all-time low. At our

Fla. Southern

Tau Rho won the Scholarship Trophy last semester with an overall brothers' average of 2.659; highest Greek average in FSC's history. We are looking forward to another outstanding year socially and scholastically. We should have another fine year athletically under the leadership of Bill Levine and John "Woody" Woodward.

At our opening meeting we were privileged to have in attendance Lenny Wolf, assistant vice consul of Province IX. Also back at school—Pete Sharon from U. S. Navy duty.

Len Wozniak is playing varsity basketball for the third season. "Big" Len is 6'9" and has been averaging 12 points and 11 rebounds per game for the past two seasons.

Newly initiated brothers are John "Woody" Woodward, who was "Best Pledge"; Ken Anderson, Leo Fox, Larry Dawson, and Myles Douglas.

Our newly elected officers are: chancellor, Marvin Chepenik; vice-chancellor, Jerry Weissman; bursar, Alan Slewett; house manager, Marc Halpern; pledge master, Dave Levine, and scribe, Marc Bazilian.

BILL LEVINE

darkest moment, the sun shone through. Max Hymen, an alumnus, pushed the mortgage through.

All plans were made and future problems overcome with vim and vigor. A fund raising campaign was started; every brother in the house worked for the new house; morale and fraternalism kept attaining new heights as we came closer to our goal; and all hell broke loose when the chancellor announced we were over the top.

By the time this is published, we will be comfortably settled in our new living room, or playing cards in the game room, or even catching a few winks in one of the seven bedrooms.

Although the new house has been taxing the energies of our brothers, they have not stopped working on other fronts. Pledge Warden Stu Davis and his committee have made tremendous efforts in rushing this year. A new innovation brought a great many interested people to our doors; slap-stick stunts and serious

conversation kept them interested; and a large pledge class was the result. Present activities are coming to an end and what appears to be a very successful pledging period has just begun.

On the social agenda, Tau Psi is proving very active. To date, the twist soiree and contest has been the most successful affair. The Halloween party ranks second with costumes ranging from sweetness to the ghoulish. Planned activities cover everything from informal socials to formal theater parties.

Again the cigarette package collecting contest is on, and the brothers are actively engaged in procuring the greatest number ever attained in order to win the TV set to match the HiFi set already won.

STEVE FELDMAN

Illinois Tech

The Rho Delta Rho chapter at the Illinois Institute of Technology launched into the activities of the autumn semester with high spirit under the dynamic leadership of an experienced group of officers and committee chairmen, headed by our chancellor, Ron Nelson. This climaxed a summer of social events highlighted by a clever treasure-hunt and swinging beach party. Ending our chapter's summer parties was the novel, pie-throwing, water pouring, carnival that served as our rush dance. Spaced periodically throughout the summer and fall were the exchanges and mixers our social chairman, Bernie Mayoff, arranged with various sororities.

The fall semester found TEPS involved in many campus and I.F.C. activities. Mike Dunn is the Interfraternity Council's "Open House" chairman, as well as associate editor of *Listenings*, the campus humor magazine. Phil Katz is educational area director of the Union Board, which governs student activities in the Student Union. Jack Lapidus is I.F.C. Open House invitations chairman, as well as on the Election Commission and I.F. ball committee. Bernie Mayoff is secretary of the Institute of Radio Engineers as well as personnel chairman of the Union Board Movie Committee. Jerry Dolins is an active member of the Tech Men, the campus vocal group.

Our chapter's participation and

UNDERGRADUATE

leadership in student and interfraternity events has never been higher with the brothers of our chapter leading many events such as Stan Weitzenfeld being events director of the Bog, which is the student night club on campus, and chairman of I.F.C.'s open house banquet.

Our chapter is enjoying a social season which so far consisted of a Communist Cell type party, in which alarm clock time bombs were planted on campus, and a 12 o'clock midnight Woods Party in which the scene will be a local forest preserve. Planned for the future is a Halloween hay ride and a big party in conjunction with homecoming.

Pledge as well as active grades look very good and it is expected our scholarship average will be high above all men's average, as it has been for the last 26 out of 28 semesters, which is a campus fraternity record.

Our house put on a tremendous pageant, at I.F.C. pageant competition, December 1st. Our participation in this October's Greek Week events won us a place in tug-of-war, bridge and chess, plus lots of fun and thrilling moments in the bicycle race, soap box derby and water fight.

JACK LAPIDOS

Rhode Island

The 1962-63 academic season is an historic year for the Tau Omegas. This year we are celebrating our fifteenth year on the Rhody campus as Tau Epsilon Phi. These fifteen years have been marked with great achievements. From a quonset hut to our present spacious chapter house, our physical plant has made great strides since 1948. Over the past three years, we have built a \$44,000 addition to enlarge our Campus Ave. house, remodeled both our chapter and social rooms, and built a new commissary and kitchen.

The chapter is now under excellent leadership, with Steve Herman, chancellor; Richie Kanter, vice-chancellor, and Marty Waitz, bursar, holding down key posts. They have imparted a sense of unity and cohesion over the brotherhood during their term in office.

In scholastics, athletics, and social events, Tau Omega is enjoying great prosperity. Last year, we were fourth on campus with an overall 2.1 quality point average. Showing great fight, our softball team, after dropping the first two games, went on to sweep its last fifteen and copped the

Intramural championship, blanking our opponents in the final, 5-0. This year, in football, we finished third in a strong league and are looking forward to the basketball season.

Leading the U.R.I. basketball team this year will be Charlie Lee, an all-Yankee Conference selection at forward last year and this year's captain, and Nate (Smitty) Smith, back from California. Socially, TEPs are TOPS again, with the limelight falling on our Playboy, Tee Pee Trot, and Homecoming affairs.

Under the capable direction of Rush Chairman and Past Chancellor Bob Bomes, an enthusiastic rush program has been instituted and is underway successfully.

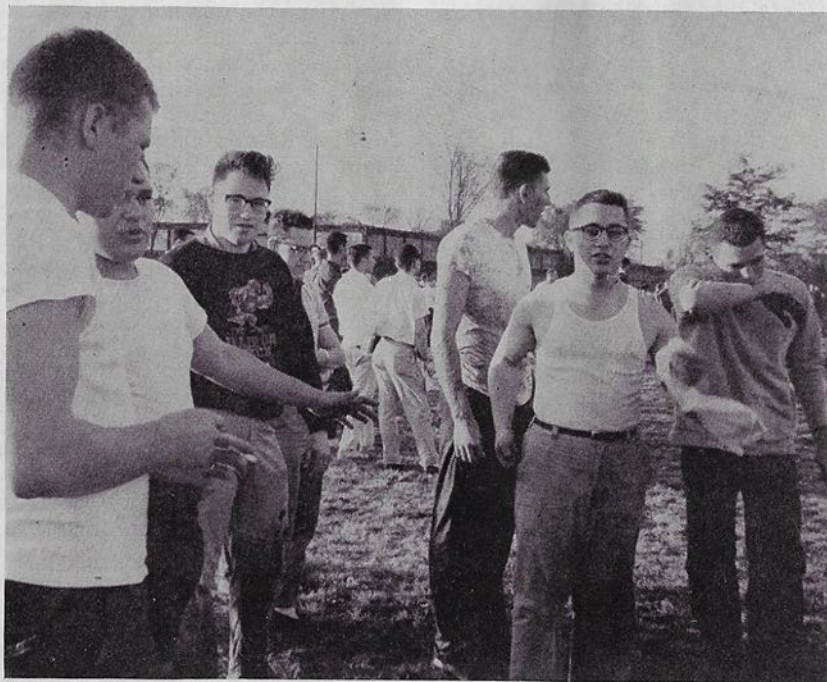
Drexel Tech

Our chapter's active roll has now increased to 79 with the induction of 28 new brothers from our Spring and Summer Pledge Classes. Already many of these new brothers are announcing themselves as TEP-men in many activities.

Many brothers are attaining responsible positions in campus activities. Norm Hollander, our chancellor, has been president of the Student Senate, Jack Krafchick was this year's Homecoming committee chairman, and Steve Miller is approaching leadership of Inter-fraternity Council.

A number of improvements have been made to the chapter house. A spare room on the first floor has been converted into a study room and den, featuring a blackboard, bookcase, meeting table and lounge chairs. Renovations to the second and third floors have been started with the addition of bookracks to each desk. New beds and dressers are the next items on the agenda. To add to the beauty of our first floor a modern mural is being planned at one end of the living room.

Socially, TEP at Drexel has made a name for itself as a "swinging group." Our Homecoming party was one of the best successes of the year. The biggest social success of the year at Drexel, a city-wide mixer, was sponsored by Epsilon Eta. Called the "Harvest Hop," it featured continuous music by two bands, and



Rho Delta Rho brothers dry off after a Greek Week water fight at Illinois Tech.

CHAPTER NEWS

netted a tidy sum for use by the chapter.

Epsilon Eta took second place in the fraternity house decoration contest, and a majority of brothers and their dates were in attendance at the Homecoming game when we received an award for the display.

BOB PRESSER

Rensselaer

Our open house saw over 500 freshmen (out of total frosh class of 800) begin Epsilon Iota's most extensive rushing campaign in its history, led by our capable rushing chairman, Mike Jacobs. Our rush program as usual was augmented by the large crowd that can always be found at Epsilon Iota's Homecoming party. Along with the brothers and other merrymakers, the Homecoming party saw over 20 alumni returning to TEP for another memorable weekend.

TEPmen are again well represented in all phases of campus activity this year. Kenneth Golden was one of the head counselors in Frosh Camp. Kenneth Brody, Mike Jacobs, David Goldberg, Richard Crystal and Kenneth Golden form the core of our school's humor magazine *The Bachelor*. Mike Goloboy has been elected secretary of the IFC

and is a member of the Judicial Committee, and has been kept quite active with the overall fraternity policies.

In regard to athletics, TEP is well represented in intramural activities, as well as on the intercollegiate competition level. Mike Jacobs has already broken several R.P.I. swimming records, and since he is only a sophomore, we all look forward to seeing many more set by him while on the varsity. Marty Schwam, varsity track letterman, is anxiously awaiting the start of the new season. Many of our teams in the various interfraternity sports placed exceedingly well in the past year with our softball team taking our league championship. Over all, "the big machine" placed 9th out of 30 fraternities for the Trustee Trophy.

Scholastically, TEP placed first on campus last semester, and second overall for the year. Because of this, we were recently awarded the IFC Scholarship Improvement Trophy.

Also the brothers are well represented in the various scholastic honorary societies; Les Waltman is presently president of Epsilon Delta Sigma, management engineering honorary.

The house has been greatly improved in the past year. The pledge

class constructed a new and completely modern living room as their "help" week project and the alumni donated the furnishings. Previously, other rooms were also modernized.

We would like to congratulate the officers for this year. They include Bill Rosenberg, chancellor; Larry Mednick, vice-chancellor; Les Waltman, bursar, and Art Goldberger, scribe.

CCNY

Epsilon Lambda's new executive committee consists of Richard Geller, chancellor; Robert Blackey, vice-



Shown at Epsilon Lambda (CCNY) Honors and Awards Dinner are (l to r): Al Harrison, best pledge, and David Klein, pledge warden of Spring pledge class; and Seymour Ringel, pledge warden, and Howie Fox, accepting award for Best Pledge Al Weinstein of the Fall pledge class.

chancellor; David Klein, scribe; Bruce Nissenbaum, bursar; Fred Borah, historian; Mel Greenberg, warden; Richard Schweidel, chaplain, and Marv Goodman, member-at-large.

Fraternalism was the main item on the menu as Epsilon Lambda held its annual Honors and Awards Dinner in November. In addition to honoring the outstanding undergraduates for their devotion, service, and achievements, brothers of Epsilon Lambda's Alumni Association were honored for their tireless efforts toward the rebuilding of the house damaged by fire last March, and the fraternalism that is typical of Epsilon Lambda.

Our athletes are out in force to regain the IFC athletic championship which was lost last year as TEPmen placed third for the '61-'62 season. The football team under the mentorship and quarterbacking of Steve Ganzell rates as the number



A low budget for their school's humor magazine forced these brothers of Epsilon Iota (R.P.I.) to hike back from Green Mountain College after getting an article for the magazine.

UNDERGRADUATE

Hunter College

one team to beat. The basketball team's captain, Bob Shick, also predicts a winning campaign as his fast-break strategy will soon be tested. Doug Meyer, Epsilon Lambda's athletic rep and co-chairman of IFC athletics, agrees with Brother Ganzell, TEP athletic chairman, that the championship trophy will once again decorate our crowded trophy case.

The IFC, recognizing talent, has elected Richard Schweidel and Mike Schweitzer to two of the five executive committee posts.

The rush program is picking up momentum. The bid date is coming soon and Epsilon Lambda will again be the proud possessors of the finest pledge class at City College.

The social program moved into high gear with a costume party and a Hawaiian Hoe-down, and of course, our weekly Friday night gala socials under the delicate guidance of Social Chairman Ira Pergament. Andrew Samuals' theater-cocktail party is a sellout.

Flushed with the success of being the first CCNY fraternity to successfully sponsor a concert, Epsilon Lambda will again sponsor the Weavers, the famous folk singing group, for our spring concert in March. Under the direction of Paul Barash, brotherhood participation again will account for Epsilon Lambda's coming success. Also Jean Shepard, famous radio personality and leader of the "night people" will make his semi-annual appearance at City College, sponsored by Epsilon Lambda.

FRED BORAH

Rochester Tech

A new look for Epsilon Nu was discovered by all returning to Rochester Institute of Technology this fall. With TEP moving from an old house to a self-renovated home four blocks closer to campus, next door to two other fraternity houses, the nucleus of a fraternity row had formed on our campus.

Brothers returned to school two weeks early to restore and redecorate our new home. Showing more enthusiasm than noticed in recent years, the brothers of Epsilon Nu hopefully prepared for their best rush, scholastic, and social program ever.

Epsilon Mu has moved into its new house and after much work by the brothers is now in beautiful shape.

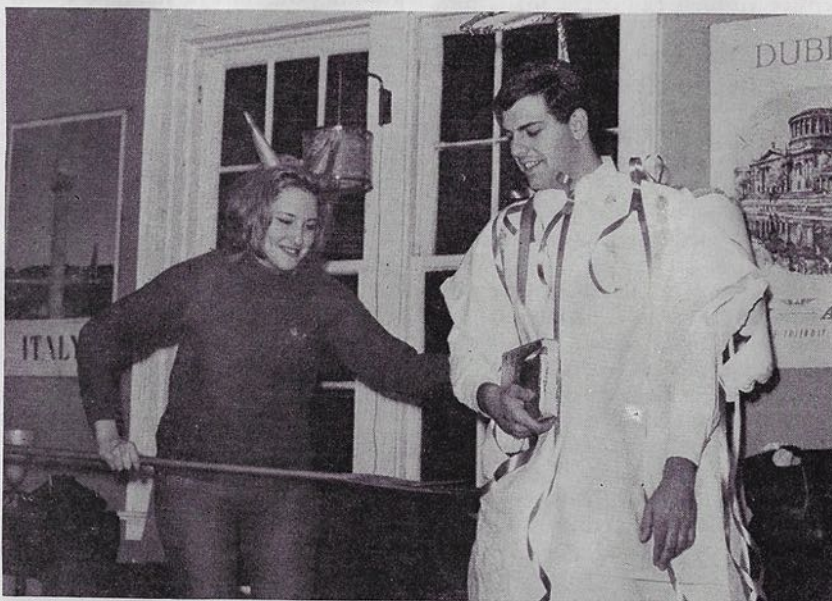
Although the fall rushing period is secondary to spring rushing because low freshmen cannot be rushed, Epsilon Mu led all fraternities at Hunter, inducting 12 pledges. We hope to double this number in the spring.

In athletics, we are running a

close second in IF football and prospects for winning look good. Socially, our Hallowe'en costume party was a blast, and we are presenting a concert by the Smothers Brothers.

This semester's officers include: Kenny Sloane, chancellor; Jack Blackin, vice-chancellor; Phil Zohn, bursar; Bob Levin, scribe, and Dave Ourman and Norm Greenspan, social chairmen.

BILL SKWERSKY



One angelic brother (above) at Epsilon Mu (Hunter) is about to feel the wrath of Satan in the person of a devilish cutie during the chapter's Hallowe'en costume party. Meanwhile, another brother gets a double dose of good will (right) from two young ladies who lack costumes but not the proper devilish spirit.



A rushing advantage occurred when TEP threw its first big social weekend for the entire student body

since the fraternity has been on campus. This was also the first social weekend this year, and the only fra-

PLUME

CHAPTER NEWS

ternity weekend during the first quarter of school. The weekend drew to a close Sunday night, after a "big blast" Friday night, a Saturday evening semi-formal entertained by a 15-piece band, and the now-famed second annual TEP "Miss Carriage Race" for 1962. The race received national publicity last year.

New officers for the coming year include Chancellor Ronald Sherman, Vice Chancellor Paul Levy, Bursar Richard Larson, Corresponding Scribe Ronald Glazer, Recording Scribe Michael Rosenberg, Pledge Warden Sidney Wicks, Historian Henry Kuhn, House Manager Alan Witten, and Social Chairman Allan Edelstein.

HENRY KUHN

Wayne State

For the brotherhood of Phi Gamma, this past year has been a memorable one. Under the leadership of Sidney D. Feldman and Jerry Aronoff, Phi Gamma grew not only in size, but in stature as well.

Athletically, TEPs ranked near the top of the 19 competing fraternities in all the major sports. TEPs placed third in bowling, fourth in baseball and football, and sixth in basketball.

By collecting 26,000 (yes, that's twenty-six thousand) cigarette packages, TEPs won a portable television

set which was then successfully raffled off.

The third annual "TEP Day on the Mall" helped raise funds for the Muscular Dystrophy campaign, and the pledges collected for the Jewish War Veterans on Poppy Day.

In rushing, TEPs were really tops as a record number of pledges chose the Lavender and White this semester. Under the leadership this year of Jerry Maxman, Phi Gamma chapter will soar to even greater heights.

Tulane

During the summer the TEPs at Tulane were busy planning for improvements that had to be made before September to accommodate a full house. A new shower room and bathroom were installed, and for aesthetic and rushing purposes the brothers panelled the second floor hall.

A head count a few days before Rush Week revealed that there were more people who planned to live in the house than living space. This was the first time in Epsilon Kappa's short history that such a phenomenon had occurred. After recovering from the initial shock, all the brothers started working and quickly transformed our former game/guest room

into adequate living room for four.

This same spirit of fraternalism and willingness to work was exhibited during Rush Week. Assisted by Brother Arenson (Mu), who was visiting New Orleans at the time, and Brother Zipern, who was our guest through the cooperation of National, the brothers went all out and made Rush Week a resounding success by pledging ten spirited freshmen, and lining up several possibilities for second semester pledging.

STEVE FATTEL

CCNY (Baruch)

In the three years since its inception, Alpha Omega chapter has become the most highly respected fraternity on the campus of the Baruch School. As the new school term begins, the brotherhood is confident that this year will be the most successful.

Upon returning from the summer vacation, the brothers were saddened by the untimely passing of brother Arty Kelem in an automobile accident. A plaque dedicated to Arty is now prominently displayed in the fraternity house. In addition, an Arty Kelem Service Award has been established.

The new slate of officers for the fall term was formally installed into office at the first meeting of the new semester. They are: Chancellor Jay Weller, Vice Chancellor Dave Rosner, Bursar Berel Spevak, Pledge Warden Howie Cohen, Recording Scribe Leonard Z. Drachtman, Corresponding Scribe Bob Feirman, Member-at-large Harvey Sandler, Historian Elliott Rosenthal, and Chaplain Ralph Weil.

Alpha Omega chapter is prominently active in all phases of school life. Barry Epstein is president of the Senior class while another brother is president of the Sophomore class. Brothers are also active on *Ticker*, the school newspaper, Student Council, and the Intramural Board.

The chapter has high hopes of reclaiming the IFC athletic trophy which it lost by one point last year. As of this writing, we have reached



Pledges of Phi Gamma (Wayne State) take time out from their hectic pledge period to take a (nearly) formal picture.

Fall, 1962

TEPROGRESS

BIRTHS

To Bro. and Mrs. Nelson O. Newcombe, Tau Zeta, a daughter, Judy Anne
 To Bro. and Mrs. Alan Herschman, Delta, a future TEP, Eric Scott
 To Bro. and Mrs. Robert Glasser, Tau Alpha, a future TEP, Gary Alan
 To Bro. and Mrs. Marvin Brody, Omega, a future TEP, Jeffrey Scott
 To Bro. and Mrs. David Weixelbaum, Rho, a daughter, Phyllis
 To Bro. and Mrs. Arthur Segal, Zeta Lambda Phi, a daughter, Marci Elaine
 To Bro. and Mrs. Edward Tisnowier, Tau Alpha, a daughter, Lynn
 To Bro. and Mrs. Murray Matez, Nu, a daughter, Andrea Faith
 To Bro. and Mrs. Allan Kamnitz, Epsilon Gamma, a daughter, Gail Elaine
 To Bro. and Mrs. Robert Blitz, Tau Alpha, a future TEP, Howard Alan
 To Bro. and Mrs. J. Robert Mantler, Gamma, a future TEP, Jeffrey Hiller
 To Bro. and Mrs. Mike Ragofsky, Epsilon Nu, a future TEP, Edward Jay

MARRIAGES

Bro. Barry Pogach, Epsilon Eta, to Roberta Perlin
 Bro. Ed Neham, Epsilon Eta, to Celia Weinstein
 Bro. Michael Pincus, Tau Beta, to Marlene Harris
 Bro. Steven Alpert, Tau Beta, to Cynthia Glazer
 Bro. Harvey Lyons, Tau Delta, to Maxine Granite
 Bro. Bernie Friedman, Tau Delta, to Sandy Zimmerman
 Bro. Ronald Rocco, Tau Delta, to Elaine Spike
 Bro. Arnold Schiffman, Tau Delta, to Nancy Carlson
 Bro. Steve Meckler, Tau Delta, to Beverly Spike
 Bro. Michael Shapiro, Tau Rho, to Sydell Levine
 Bro. Michael Rosenfeld, Tau Rho, to Myrna Goldenburg
 Bro. Ed Rubin, Tau Rho, to Del Kaplan
 Bro. Gary Rosenthal, Nu, to Eileen Ginsberg

To Bro. and Mrs. Stanley Medved, Tau Zeta, a daughter, Lisa Ann
 To Bro. and Mrs. Jay Fuchs, Gamma, a daughter, Jodi
 To Bro. and Mrs. Richard Rosenblatt, Gamma, a daughter, Page
 To Bro. and Mrs. Richard Weiner, Omega, a future TEP, Kenneth Edward
 To Bro. and Mrs. Ronald Bellin, Kappa Zeta Phi, a daughter, Paula Beth
 To Bro. and Mrs. Fred Tobman, Kappa Zeta Phi, a future TEP, Allen Scott
 To Bro. and Mrs. Jordy Baker, Kappa Zeta Phi, a future TEP, Robert
 To Bro. and Mrs. Martin Shaevel, Kappa Zeta Phi, a daughter, Laura Betha
 To Bro. and Mrs. Chic Hendel, Tau Mu, a daughter, Alisyn Ilene
 To Bro. and Mrs. Walter Goodman, Sigma, a future TEP, Steven Louis
 To Bro. and Mrs. Saul Goldman, Tau Lambda Assoc., a daughter
 To Bro. and Mrs. Jules Kaplan, Tau Gamma, a future TEP, Jeffrey Charles
 To Bro. and Mrs. Charles Sagan, Tau Pi, a future TEP, Warren Todd

Bro. Harvey Weitz, Nu, to Charlotte Murphy
 Bro. Stuart Rosenthal, Nu, to Adrienne Peran
 Bro. Solomon Cohen, Nu, to Joan Taratot
 Bro. Stanley Herman, Mu, to Nancy Schreiberman
 Bro. Sheldon Fogel, Omega, to Judith Katon
 Bro. Charles Goldman, Omega, to Norma Soloman
 Bro. Barry Zaslav, Omega, to Susan Sklar
 Bro. Harvey Berson, Kappa Zeta Phi, to Roberta Parker
 Bro. Paul Cooper, Kappa Zeta Phi, to Marilyn Brown
 Bro. Tom Hyman, Kappa Zeta Phi, to Jeanette Bernstein
 Bro. Mike Leinwand, Kappa Zeta Phi, to Carol Gordon
 Bro. Myron Samuel, Kappa Zeta Phi, to Susan O'Satin
 Bro. Jerry Pollon, Xi, to Harriet Bernstein

To Bro. and Mrs. Bernie Goldston, Tau Delta, a future TEP, Charles Harlan
 To Bro. and Mrs. Martin Felser, Gamma, a future TEP, Jeffrey Alan
 To Bro. and Mrs. Larry Teich, Gamma, a future TEP, Mark
 To Bro. and Mrs. Don Jacobson, Tau Rho, a daughter, Betty Jean
 To Bro. and Mrs. Norm Marcus, Alpha, a daughter, Valerie
 To Bro. and Mrs. Dick Kameros, Alpha, a daughter, Suzanne
 To Bro. and Mrs. Gene Baroff, Alpha, a future TEP, Andrew
 To Bro. and Mrs. Arch Ingerman, Alpha, a future TEP, Adam Crown
 To Bro. and Mrs. Stan Rubinfeld, Alpha, a future TEP, Kenneth Michael
 To Bro. and Mrs. Sam Kaplan, Alpha, a daughter, Julie
 To Bro. and Mrs. Arthur Butlien, Delta, a future TEP, David Lewis
 To Bro. and Mrs. Arnold Schuster, Sigma, a future TEP, Eric

Bro. David Bromer, Xi, to Anne Epstein
 Bro. Alvin Feingold, Xi, to Ilene Baker
 Bro. Richard Hornby, Xi, to Faith Zager
 Bro. Robert Seid, Xi, to Niki Alpern
 Bro. Paul Bush, Xi, to Berta Schmeichelwort
 Bro. Mel Kosnoff, Tau Lambda, to Bonnie Habash
 Bro. Steve Feinberg, Tau Lambda, to Elenore Lerner
 Bro. Thomas Knietael, Tau Xi, to Jud
 Bro. Norman Brown, Tau Mu, to Judy Menkin
 Bro. Michael Farb, Epsilon Deuteron, to Helen Nakin
 Bro. Larry Jackson, Alpha Omega, to Adele Niad
 Bro. Wilton Sogg, Epsilon Delta, to Saralee Krow
 Bro. Joseph Donovan, Tau Zeta, to Holly Parkhurst

Bro. Henry Binder, Tau Zeta, to Dauna Webb
 Bro. Herschell Wais, Phi Gamma, to Bella Greenbaum
 Bro. Ron Sherr, Phi Gamma, to Linda Friedman
 Bro. Bernard Krentzin, Phi Gamma, to Jackie Hornstein
 Bro. Alan Marks, Phi Gamma, to Sharon Switsky

Bro. Stephen Coltan, Gamma, to Carol Cahn
 Bro. Al Grayzel, Alpha, to Frieda Tennenbaum
 Bro. Leonard Dunn, Rho Delta Rho, to Karen Singer
 Bro. James Phlamm, Rho Delta Rho, to Cathy Rich

Bro. Russ Meskin, Phi Gamma, to Annette Mueller
 Bro. David Katz, Phi Gamma, to Sharon Guss
 Bro. Stuart Katz, Phi Gamma, to Lenore Frank
 Bro. Lawrence Aran, Phi Gamma, to Reisa Katz

Engagements

Bro. Norman Hollander, Epsilon Eta, to Barbara Wankoff
 Bro. Stan Leibowitz, Epsilon Eta, to Phyllis Porter
 Bro. George Lubeck, Epsilon Eta, to Gail Leibowitz
 Bro. Herman Marks, Epsilon Eta, to Sheila Uressman
 Bro. Herb Goldberg, Epsilon Tau, to Leslie Orell
 Bro. Ronald Cohen, Nu, to Marlene J. Cohen
 Bro. Abraham Kaplan, Mu, to Vivian M. Harris
 Bro. Stanley Greenfield, Nu, to Gail R. Safer
 Bro. Sanford Rosenthal, Tau Alpha, to Nancy H. Wagman
 Bro. Stanley Jacobs, Epsilon Iota, to Betty Arth
 Bro. Howard Heiss, Tau Beta, to Marilyn Noe

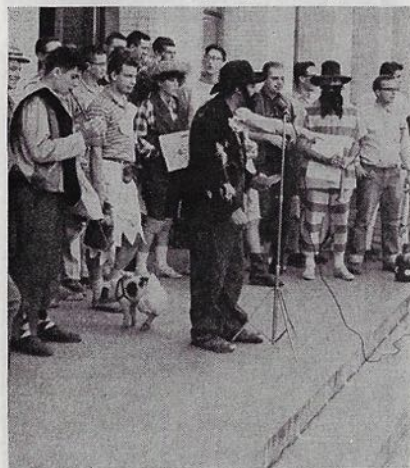
Bro. Ronald Kaplan, Tau Psi, to Sandra Hasson
 Bro. Gordon Levine, Tau Psi, to Susan Barnett
 Bro. Steve Bankoff, Kappa Zeta Phi, to Marilyn Wasserman
 Bro. William Ashendorf, Omega, to Judith Kurtz
 Bro. Edward Manning, Omega, to Dale Nye
 Bro. Dennis Rossoff, Gamma, to Phyllis Anderson
 Bro. Marv Schuster, Gamma, to Rita Spun
 Bro. Dave Tartikoff, Gamma, to Sharon Dietz
 Bro. Norman Goldberg, Epsilon Eta, to Phyllis Katz
 Bro. Jerry Raznov, Epsilon Eta, to Gail Brookstein
 Bro. Jerry Liebowitz, Epsilon Eta, to Claire Weinstock

Bro. Martin Kreiss, Tau Beta, to Sandy Lynn
 Bro. Robert Salomon, Mu, to Claudia Biolenki
 Bro. Donald Benovitz, Tau Lambda, to Sharyl Wolvos
 Bro. Sidney Dennis Feldman, Phi Gamma, to Margaret Zeiger
 Bro. Sidney Ivan Feldman, Phi Gamma, to Beth Rosenberg
 Bro. David Sandler, Phi Gamma, to Sharon Ziporyn
 Bro. Sanford Marks, Phi Gamma, to Myra Auslander
 Bro. Dean Echenberg, Phi Gamma, to Elaine Cohen
 Bro. Herb Morrison, Phi Gamma, to Diane Lewis
 Bro. Gerald Maltzman, Phi Gamma, to Carole Hack
 Bro. Robert Shapiro, Phi Gamma, to Maureen Pack
 Bro. William Klein, Tau Psi, to Judith Masanoff

KZPhi

Continued from Page 23

the school year. It seems that in these first two months we have had every type of party imaginable.



Mike Bearson, dressed as "Ozark Ike," candidate of Kappa Zeta Phi chapter for spirit leader at Northwestern Univ., campaigns with some of his "mountain folk," other brothers and friends, and "Watermelon," a piglet-mascot complete with diaper.

Far and away the most spectacular of our Northeastern activities was the fraternity participation in the "Mayor of Huntington Avenue" Contest. The N.U. fall season is marked by the comical and hilarious grandeur of the election of the "Mayor." The topped-hatted personage, elected by the student body after a week of entertaining by the candidates is the official "spirit" leader of the university. Each student group nominates and supports a candidate, who runs under a well-known alias ranging all the way from J.F.K. to Dracula. KZPhi's entry was Mike Bearson alias "OZARK IKE". The type of campaign technique is determined by your choice of name with the qualifications that they be loud, spirited, and ridiculous. Paul Cowan and Ed Cohen, Ike's managers, coordinated the chapter in the extensive shenanigans. Ozark, supported by several other fraternities and a girl's dorm, rol-

licked throughout the campus during election week activities bedecked in his booted, bearded, corn cob pipe smoking, booze swigging, top coated, patched dungaree clad costume.

The campaign itself took weeks of planning with many all-night skit writing and poster making sessions. The presence of coeds alleviated these burdens for the most part, however. Campaign week highlighted by the daily rallies, found KZPhi's Ozark Ike and his retinue entertaining the electorate with twist exhibitions, band playing, story telling, and the proverbial campaign promises such as "Kodi Sak" (Ozark Whiskey) for all and the big building of Ozark's grandpa from a 150 pound weakling to a 250 pound strongman.

The voting on Friday was featured by shouting contests between each of the nomination groups. It was a real struggle to see who could

Continued on Page 26

KZPhi

Continued from Page 25

sing the loudest and display the most signs on behalf of their candidate. Our Ozark Ike song and Ozark Ike matchbook covers were impressive. Ike finished just 50 votes from the winner in the largest turnout in school history. The Brothers, tired from the hectic week, remorseful with a twist party at the house.

Our Alumni contact committees under Paul Hoffstein, now publishes a TEP O'GRAM monthly which keeps them informed as to latest events of both the chapter and the individual Alums. A distinctive alumni-brother event was the testimonial dinner given by the chapter to honor Dr. Norm Rosenblatt, our past advisor, for his years of devoted service to our fraternity. Brother Rosenblatt, assistant professor of history at Northeastern and the recipient of a Fulbright scholarship, has since left the United States for Spain where he will do a year's research on Middle-Age Spanish History. The dinner was attended by every brother and pledge of the fraternity as well as many alumni and faculty.

The chapter is right in the thick of campus activities. Pete Previte was elected to Student Council. Also, Kappa Zeta Phi now has close to a dozen students in the various honor societies at the University.

The chapter, having one of its strongest years on campus recently initiated 14 pledges into brotherhood bringing our membership to 55, the highest in our history. The chapter is currently pledging six upper-



Executive council and alumni advisors of Phi Eta (Johns Hopkins) stop deliberations long enough to watch the birdie for Ron Drogin, field secretary, during his stay at the chapter house.

Thank You to Tau Delta

The following letter was sent to the brothers of Tau Delta (Ohio State) after their Homecoming party at which they welcomed Patricia Shaman Samuels, the daughter of Sol Shaman, past consul, and president of the Tau Delta alumni group.

To the Men of Tau Epsilon Phi:

The one thing my Father (Tau Delta '18) regretted when his wife had a child was that the infant was not a boy—a legacy for his fraternity.

But as a teenager, I soon proved that a girl can be as fraternity minded as "the next fellow" and I soon learned that rushing is not only a boy's game! Most girls have one or two brothers, but I discovered that I had about 60, and they were new ones every four years!

"Sol" finally decided that I was ready for my first initiation when I was 15 years old—and I bet my Hell Week was more fun than yours, for we went to the national convention in Miami, Florida. I guess I passed all the tests, for until 1961, I did not miss a TEP regional or national gathering.

At this time, my husband Larry and I want to express our appreciation for the lovely serenade you gave us at your last homecoming affair. I was really thrilled with your thoughtful gesture and was glad you accepted us at your party. (We almost didn't make it in time!)

We hope that "Teps are Tops" this year and in all the years to come.

Sincerely yours,
Pat

classmen.

Although freshman rushing, according to school policy, cannot start before January, 1963, KZPhi is busily making plans for it under the capable leadership of Dan Aizley. The chapter has sent letters to other TEP Chapters inquiring of their policies and explaining ours with the desire of continual improvement. Our goal for next year is to double our pledge class.

KZPhi was proud to receive an award from the Fairfield State Hospital for our endeavors in the social welfare area. Many of our brothers also work at hospitals and service agencies, and make up the leadership of the Northeastern Student Union which is active in charity work.

JOHN GARDINER, ERNEST GAM
and DON SHAPIRO

COLONY CORNER



A group of members celebrate after recognition as Epsilon Omicron colony was awarded to a local fraternity at Pratt Institute.



Rapidly growing membership of Epsilon Phi colony (Penn State) pose for a group shot.

Professional Directory

Brothers who are members of the National Alumni Chapter, or are Life Members may obtain listing in this Professional Directory by the Payment of an additional five dollars. This fee entitles the brother to a listing according to profession or business in four issues of the *PLUME*. If you desire a listing, kindly communicate with the National office.

ACCOUNTANTS

Massachusetts

ROBERT D. SCHWARTZ, *Tau Pi* 371
25 Blackstone St., Peabody
(C.P.A.)

New Jersey

STANLEY R. WOLFE, *Rho*
24 Brandford Place, Newark

New York City

MILTON H. LANZ, *Gamma*
12 E. 41 Street, New York 17,
(C.P.A.)

New York

JERALD WEISBERG, *Epsilon Rho*
832 Troy Street,
Elmont, New York

Ohio

SANFORD GOLDSTON, *Tau Delta* 282
Arthur C. Jahn & Co.
209 S. High St.
Columbus 15

Pennsylvania

HERBERT DIAMOND, *ZLPhi* 124
City Line Center Bldg.
1616 City Line Ave., Rm. 117
Philadelphia 51

ADVERTISING AND PUBLIC RELATIONS

New York

JAY GRABER, *Delta*
Perfect Letter Co. (Direct Mail)
449 Broadway, New York
MALVIN ROBERT PECK, *Tau Beta*
Advertising Distributors of America, Inc., (Direct Mail)
400 Madison Ave., New York
STANLEY SCHWARTZ, *Gamma*
1402 Avenue I, Brooklyn

ARCHITECTS

District of Columbia

VICTOR SMOLEN, *Phi*
1029 Vermont Ave., Washington,
D. C.

ATTORNEYS

Canada (Quebec)

HARVEY CRESTOHL, *Omicron* 113
1454 Mountain St., Mt. Royal
Montreal, P. Q.

Fall, 1962

H. REUBEN COHEN, *Tau Iota* 43
Suite 205, 1111 Main St., Moncton,
N. B., Canada

California

WILLIAM MANNS, *Tau Gamma*
430 North Rodeo Dr., Beverly Hills
U. R. GERECHT, *Gamma*
210 Douglas Bldg., Los Angeles
CONNOLLY OYLER, *TV* 141
6850 Van Nuys Blvd., Van Nuys

Connecticut

ARTHUR M. LEWIS, *Theta*
Danaher, Lewis & Tamoney
75 Lafayette St., Hartford
ISRAEL NAIR, *Iota*
City Hall Bldg., New Britain
HERBERT OLDER, *Gamma*
37 Lewis St., Hartford
EDWARD SCHINE, *Theta*
1115 Main St., Bridgeport, Conn.

District of Columbia

BERNARD MARGOLIS, *T Theta*
1000 Vermont Ave. N.W., Washington

Florida

DAVID M. BLOOMBERG, *Tau Xi*
717 Seybold Bldg., Miami
AINSLEY R. FERDIE, *Tau Xi*
1728 W. Flagler, Miami
ALAN E. GREENFIELD, *Tau Xi*
3995 N.W. 25 St., Miami
LOUIS LEBOVITZ, *Tau Alpha*
205 Worth Ave., Palm Beach
NORMAN K. RUTKIN, *Theta*
405 Industrial National Bank
25 W. Flagler, Miami
AL L. SCHNEIDER, *Tau Alpha*
812 Lynch Bldg., Jacksonville
ARTHUR N. SHEPPARD, *Rho*
223 S.E. First St., Miami
HAROLD TURK, *Tau Xi Assoc.*
Turk & Newman
420 Lincoln Rd., Miami Beach

Georgia

MORTON P. LEVINE, *Nu* 219
2505 Bank of Georgia Bldg.,
Atlanta
JULIAN B. TURK, *Nu*
Levine & Turk
Suite 1240 Citizens Southern
Nat'l Bank Bldg., Atlanta 3

Illinois

SAMUEL M. FRIEDLANDER, *Psi*
Lehmann Bldg., Peoria
LEONARD H. LAUTER, *Psi*
1 N. LaSalle St., Chicago 1, Ill.
BERNARD M. PESKIN, *Rho Delta Rho*
33 N. La Salle St., Chicago
(Member, State Legislature)
HAROLD TUCKER, *Psi*
33 N. La Salle St., Chicago

Kentucky

ERWIN A. SHERMAN, *Tau Chi* 11
300 S. Fifth Street, Louisville

Maryland

I. DUKE AVNET, *Gamma*
602-3 Knickerbocker Bldg.
220 E. Lexington St., Baltimore
MARK D. COPLIN, *Tau Beta*
10 Light St., Baltimore 2

Massachusetts

WILLIAM L. BERGER, *Theta*
209 Washington St., Boston
ERWIN E. COOPER, *Tau Zeta*
Kabatnick, Stern & Cooper
10 State St., Boston
SAMUEL L. FEIN, *Gamma*
1421 Main St., Springfield
SHERMAN E. FEIN, *Theta*
1421 Main St., Springfield
MYER L. FELDMAN, *Theta*
316 High St., Holyoke

New Jersey

HERMAN M. GERBER, *Rho*
Aker Bldg.
E. Main St., Tuckerton
SHERWIN D. LESTER, *Delta*
921 Berger Ave., Jersey City
JACOB LEVINSON, *Epsilon*
265 Hobart St., Perth Amboy
MAURICE A. ROSS, *Tau Delta*
27 S. Dean Ave., Trenton
NATHAN C. STALLER, *Zeta Lambda Phi*
2601 New Jersey Ave., Wildwood
SAMUEL W. STRAUSS
Zeta Lambda Phi
115 N. Fourth St., Camden
BERNARD VERNEY, *Iota*
1060 Broad St., Newark

New York

JACOB AKS, *Delta*
1 Jones St., Monticello
IRA M. BALL, *Rho*
First National Bank Bldg., Utica
S. SANFORD ENGEL, *Sigma*
712 Empire Bldg., Syracuse
IRWIN SIMENOWITZ, *Phi Lambda*
55 E. Jericho Turnpike
Mineola, N. Y.

New York City

Manhattan
IRWIN N. ALBERTS, *Tau Pi*
c/o Nat'l Labor Relations Board
745 5th Ave.
FRANK BENJAMIN, *Theta* 514
61 Broadway, New York 6
RUBIN COWEN, *Epsilon*
549 Brook Ave., New York 55
IRWIN K. FINOERIT, *Kappa*
Hecht & Fingerit
154 Nassau St., N.Y.C.
JACK FOX, *Rho*
115 Broadway, New York 6
LOUIS A. KASS, *Delta*
(Bar Exam Cram Course)
74 Trinity Place, New York 6
DANIEL S. LEVY, *Gamma*
40 Exchange Pl., N.Y.C.
HARRY MALTER, *Delta*
165 Broadway, New York
HARRY MEISNER, *Epsilon*
51 E. 42 St., New York
HERBERT MONTELEVY, *Alpha*
11 East 44 St., New York 17
MICHAEL ROMANOFF, *Tau Lambda*
441 West 13 St., New York
STANLEY I. SCHACHTER, *Alpha*
Matalon & Schachter
276 5th Ave., New York 1

Ohio

BERNARD L. GOLDMAN, *Chi*
1400 W. 6th St., Cleveland
WILLIAM F. STEINER, *Tau Delta*
1150 Terminal Tower, Cleveland
WILLIAM WASSERSTROM, *Tau Delta*
19
44 E. Broad St., Columbus 15

Pennsylvania

DONALD KEESAL, *Zeta Lambda Phi*
124 N. 18th St., Philadelphia 3
BERNARD S. LEVY, *Zeta*
Lambda Phi
RTCI PSFS Bldg., 12 S. 12 St.,
Philadelphia 7
HARRY SPORKIN, *Tau*
602 Finance Bldg., Philadelphia

Virginia

SAMUEL A. KUSHNER, *Tau*
303 Masonic Temple, Danville
ISRAEL STEINGOLD, *Pi*
Mutual Bldg., Richmond 19

Japan

HAROLD OPPENHEIM, *Theta*
53 Yamashita-Cho, Yokohama

BROKERS

Florida

HERBERT POTASH, *Tau Xi*
1065 97 St., Miami Beach

Illinois

MARVIN L. GUMBINER, *Psi*
4625 W. Grove
Skokie
(Stocks & Bonds)

Maryland

SAMUEL M. WASSERMAN, *Tau Beta*
Stein Bros. & Boyce
6609 Reisterstown Rd.
Baltimore 2, Md.
(Stocks & Bonds)

New York

DAVID ZAITZ, *Rho*
Hightstown, New York
(Livestock Broker)

New York

STEPHEN A. BELL, *Sigma* 475
Hirsch & Co.
499 Seventh Ave., New York
ROBERT LOEWENTHAL, *Tau Rho*
(Hirsch & Co.)
655 Madison Ave.
(Stocks)
MANNY SHERMAN, *Theta*
Orvis Bros.
15 Broad St., New York
(Stock Broker)
LARRY TEICH, *Gamma*
Schweickert & Co.
29 Broadway, New York
(Stocks, Bonds & Commodities)
BERTRAM TIMONER, *Delta*
Hirsch & Co.
(Stocks, Bonds & Commodities)
655 Madison Ave., New York
LEO YOUNG, *Gamma*
70 N. Main, Freeport
(Frozen Foods)

BUILDERS AND CONTRACTORS

Connecticut

HOWARD B. FALK, *Tau Mu*
187 Griswald Dr., West Hartford
(Builders & Developers)

New York

SAMUEL J. LEFRACK, *Tau Beta*
The Lefrak Organization
(See Real Estate)
97-27 64th Rd., Forest Hills
MARTIN GOODSTEIN, *Tau Nu-R19*
Goodstein Bldg. Corp., Apartment
House Construction, 516 Fifth
Ave.

BUILDING MAINTENANCE

New York

ARNOLD SENTER
Empire State Office & Maintenance Co., Inc., 156 5th Ave.
(Janitorial)

BUSINESS MACHINES

California

PHILIP GOFSTEIN, *Tau Epsilon*
Underwood Corp.
3251 Wilshire Blvd.
Los Angeles 29

New York

ROBERT KLOW, *Gamma* 568
Savin Business Machine Corp.
161 6th Ave., New York City

CAMERAS

Panama

JOSE B. ETTSAK, *Tau Xi*
(International Photo, Inc.)
P.O. Box 1878-151 Central Ave.
Panama, Republic of Panama

CAMPS

New York

MARVIN B. EDELMAN, *Tau Mu*
Camp Windham (Diamond J.
Ranch, Windham Center, Conn.)
2110 Barnes Ave., New York,
N. Y.
CHARLES W. KLEIN, *Epsilon*
(Island Lake Camp for Boys
& Girls, Wayne County, Pa.)
20 S. Broadway, Yonkers

CHEMISTS

New York

S. CHARLES LERNER, *Delta*
Associated Analytical Laboratories
(chemical analysts) and National
Diagnostic Laboratories (medical
and clinical analysts), 203 E. 37
St., New York 16
DR. I. SCHWARTZ, *Alpha*
c/o Bendiner & Schlesinger
Third Ave. & 10th St., New York

CHIROPRACTOR

Florida

DR. WILBUR M. WISNER, *Sigma*
623 71 St., Miami Beach

CLEANING, LAUNDER- ING, DYEING

Ohio

ARNOLD C. COHN, *Tau Delta*
(Chain store cleaning & laundry)
60 Willard St., Akron 5
EDWIN CONN, *Psi* 195
759 N. Portage Path, Akron 3

COMPTROLLER

Florida

ALEXANDER JARET, *Rho-Gamma*
c/o Burk Builders, Inc.
12777 N.E. 14 Ave., North Miami

DEALERS

California

HARRY W. ABELSON, *Nu*
Abel Products Co. (Medical,
Surgical, and Laboratory
Specialists)
836 W. 58 Pl., Los Angeles 44

New York

EUGENE V. BANDLER, *Sigma*
(Tri-County Farms
(Wholesale Food))
25-75 Francis Lewis Blvd.,
Flushing 58
WILLIAM H. JAFFE, *Gamma*
1932 Jerome Ave., Bronx, N. Y.
(Tires)

Ohio

YALE BLOOM, *Tau Delta*
H. Bloom & Co. (Scrap)
Lima

DENTISTS

New Jersey

DR. NATHANIEL Z. FRAYNE, *Tau Nu*
2768 Hudson Blvd.
Jersey City

New York

MAXWELL B. COLTON, *Beta*
45 W. 81st St., New York 24

DENTAL EQUIPMENT

New York

LARRY ROSENFELD, *Epsilon Rho*
415 First Ave., N.Y.C.

DESIGN

New Jersey

HARRY EINSTEIN, *Phi 105*
1107 Chandler Ave.,
Nebetco Design, Roselle

DRUGS

Kentucky

JULIUS WISHNIA, *Tau Lambda*
Whipps Mill Drug, Louisville

ENGINEERS

Illinois

JOSEPH L. ABRAMS, *RDR*
Chief Engineer—Electrical Con-
tractor, St. Arnaud Electric
Co., Chicago

New York

JULIUS MICHAELS, *Phi*
6500 Jericho Typl., Commack
(Prof'l Eng. & Land Surveyors)

FUNERAL DIRECTORS

Illinois

MILTON YAFFE, *Psi*
5206 N. Broadway, Chicago

HOTEL AND MOTEL MANAGEMENT

Florida

MARTIN LEVINE, *Tau Alpha*
Beau Rivage Hotel, Miami Beach
LEONARD ROBBINS, *Tau Alpha*
1935 Harrison St., Hollywood

Massachusetts

ROGER A. SAUNDERS, *Tau Xi*
Coplay Square Hotel
Boston, Mass.

New York

SIDNEY J. COLBY, *Gamma*
Mgr. Algonquin Hotel
59 W. 44 St., N.Y. 36
SIDNEY PERTNOF, *Eps.*
Coliseum House
West 71 St. & B'way., N.Y.C.

INSURANCE

Connecticut

HARTT E. BERNSTEIN
(Also Real Estate)
10 Crossroads Plaza, W. Hartford

Florida

ARTHUR JACOVITZ, *Tau Xi*
1200 S.W. 1st St., Miami
(All forms)

Illinois

PAUL PITALLIS, *RDR*
1844 Michigan Ave., Chicago

Maryland

MICHAEL C. HOLOPCENER, *CLU*,
Tau Beta
1413 Reisterstown Rd.
Baltimore 8
HU-6-2456

Massachusetts

FRED N. TOBMAN, *KZPhi* 599
Tobman Insurance Agency
117 Washington St., Quincy
(Auto Insurance)

New Jersey

WILBERT MARKS, *Tau Alpha*
195 Broadway
Paterson
(Ins. Broker)

New York

ALAN H. LEDERMAN, *Theta* 445
Conn. Mutual Life Ins.
342 Madison Ave., New York
PHILIP S. MANNE, *Iota*
(Broker & Public Adjust.)
17 John St., New York
MELVIN I. GOLUB, *CLU, Gamma*
148-55 Hillside Ave., Jamaica

INSURANCE COUNSELING

Texas

PHIL PERLO, *Tau Beta*
Ins. Counseling and Sales
2100 Travis, Houston

LINEN SERVICE

New York

JOSEPH H. NADLER, *Theta*
San Towel Service
152 W. 42nd St., New York &
P.O. Box 92, Nutley, N. J.
(Office Towel Rentals)

MANAGEMENT CONSULTANTS

Illinois

KENNETH J. EATON
Assoc. Business Consultants
612 N. Michigan Ave., Chicago

MANUFACTURERS

Georgia

HAL GAINES, *Tau Xi*
1154 Reedy Circle N.E., Atlanta
(Chemicals)
ALVIN SAUL, *Nu* 123
Ladies Sportswear
Patricia Lee
575 University Ave., Atlanta
JOHN I. SNEYNE, *Tau Beta* 562
Div. L. Gordon & Son, Inc.
Stylecraft of Baltimore
1801 Byrd St., Baltimore 30
(Gifts and Stationery Accessories)

Illinois

DAVID LEAVITT, *Tau Lambda*
Leavitt Tube & Metal Co.
(Electric welded steel tubing)
1717 W. 115 St., Chicago

Maryland

LEONARD EISENBERG, *Tau Beta*
Lenmar Lacquers, Inc.
3208 Shelburne Rd., and
150 S. Calverton Rd., Baltimore

New Jersey

ALVIN A. BIRNE, *Tau Lambda*
Swan Michigan Oil Co.
(Oils, greases, core binders)
39 Zabriskie Ave., Bayonne
ROBERT J. GOLDSTEIN, *Beta*
Plastylite Corp.
(Plastic molding and manufactur-
ing, phonograph records)
333 North Dr., N. Plainfield

New York

JULES W. DAMSEY, *Kappa*
162 5th Ave., N.Y.C.
(Boys'-Students') Clothing
SIDNEY GARDNER, *Nu*
Alan-Roger, Ltd.
(Men's slacks and sport coats)
137 Fifth Ave., New York 10

Texas

MARTIN D. SIEGEL, *Phi*
Texboro Cabinet Corp.
(Kitchen cabinets)
Mineral Wells

MOTION PICTURE THEATRES

New Jersey

MAURICE J. MILLER, *Omega*
19 Central Ave., Passaic

PENSION PLANNING

Maryland

STUART HACK, *Tau Beta*
18 E. Lexington St.
Baltimore, Md.

PHARMACY

New York

CHARLES ENGLEMAN, *Alpha*
Ardsley Chemist Shoppe
Ardsley

PHOTOGRAPHY

New York

MARK EIDLIN, *Psi*
B. M. Eidlif & Co.
(Also Real Estate & Investments)
77 St. Paul St., Rochester

PHYSICIANS

DERMATOLOGY

Illinois

DR. MARTIN GECHT, *Tau Gamma*
110
1239 W. 18th St., Chicago

ENDOCRINOLOGY & NUTRITION

New York

DR. GEORGE B. DORFF, F.A.C.P.,
Gamma 79
135 Eastern Pkwy., Brooklyn

OPHTHALMOLOGY

New York

DR. ROBERT M. STURMAN, *Alpha*
8 East 84th St., New York
(Diseases of the eye)

OBSTETRICS AND GYNECOLOGY

Canada

DR. SIMON GOLD, *Omicron*
5845 Cote-Yes-Neiges Rd.
Suite 505, Montreal, P.Q.
DR. NORMAN H. OLESKER, *Omicron*
Medical Arts Bldg., Montreal

ORTHOPEDICS

Illinois

DR. EDWARD S. GROSSMAN, *Psi*
55 E. Washington Blvd., Chicago
(Surgeon)

SURGERY, GENERAL

New Jersey

DR. BURTON B. BERGMAN, *Mu*
1156 Liberty Ave., Hillside, and
31 Lincoln Park, Newark 2

Tennessee

DR. MORTON J. TENDLER, *Gamma*
899 Madison, Memphis

GENERAL

Florida

DR. JOSEPH B. POMERANCE, *Nu*
Abby Medical Center
5190 S.W. 8th St., Miami 34

New Jersey

DR. MURRAY MATEZ, *Nu* 130
3107 Mt. Ephraim Ave., Camden
4

New York

DR. STANLEY L. WEIN, *Pi* 83
285 Central Ave., Lawrence

PLUME

UROLOGY

New York

DR. S. SYM NEWMAN, *Zeta*
130 E. 52 St., N. Y.

PRINTERS

Illinois

GERALD SOKOL, *Epsilon Delta*
Wilmar Printing Corp.
333 W. Lake St., Chicago 6

PSYCHOLOGIST, CONSULTING

New York

HOWARD M. HALPERN, Ph.D., *Sigma*
2211 Broadway, New York

REAL ESTATE

Florida

ARTHUR B. LEIBOVIT, *Tau Alpha*
230 Royal Palm Ways, Palm Beach

Illinois

LESLIE AND HOWARD BLUM, *Psi*
612 N. Michigan Ave., Chicago
(Also Investments)

New York

WILLIAM BERLEY, *Delta*
Berley & Co., Inc.
11 E. 36 St., New York
RICHARD M. DORFF, *Tau Beta*
Hosinger & Bode
Long Island, New York
SAMUEL J. LEFRAK, *Tau Beta*
(Also see Builders)
97-27 64th Rd., Forest Hills
DON LIEBERMAN, *Tau Xi*
23-01 44th Dr., Long Island 1
(Ind'l & Factories, Lofts, Land)

Ohio

HARRY A. FINKELMAN
1400 Central Ave., Middletown
(Insurance)

RESTAURATEUR

New York

ASHER A. ZELIN, *Tau Xi*
Market Diners, Inc.
6 Stores in N.Y.C.

RETAILING

New York

ROBERT GAL, *Xi*
Gimbel Bros.
N.Y.C.

North Carolina

ROBERT ROSENBAUMER, *Omega*
103 E. Franklin St., Chapel Hill
(Hub of Chapel Hill-Men's
Clothing)

SALES MANAGER

New York

MARVIN A. BERNARD, *Gamma*
Rapid Film Technique, Inc., 37.
02 27th St., L.I.C., N. Y.,
(Restoration of Motion Picture
Film)

SALES

REPRESENTATIVES

Illinois

ROBERT A. MALKIN, *Psi*
Nortown Auto Sales
Executive Auto Leasing
6501 North Western Ave.
Chicago 45

New York

ROBERT K. LOW, *Gamma*
161 6th Ave., New York
(Savin Business Machines)

IVES B. NATHAN, *Tau Gamma*
Ives Distributors
601 W. 26th St., New York 1
(Office Equipment)

SCHOOLS

New York

L. PETER SEGAL, *Beta*
(Nursery & Pre-Kindergarten)
420 Webster Ave., New Rochelle

TRAVEL AGENCY

New York

JULIUS KATZEN, *Alpha*
Roland Travel Agency
10 East 40 St.

VETERINARIAN

Florida

DR. DAVID H. SPECHLER, *Mu*
Broward Animal Hospital
1180 N. Dixie Highway,
Hollywood

Connecticut

L. O. NEZVESKY, *Tau Mu* 76
6527 Main St., Trumbull

LAST WORD-DOUBLE PLAY



This float won second place for Zeta Lambda Phi chapter in the Temple University Homecoming float competition. A central attraction of the float is a barbecue pit with a revolving spit and simulated fire. Skewered on the spit is a "Blue Hen" of the University of Delaware, Temple's homecoming game opponents. Several weeks before, a "Cadet" representing Drexel's homecoming rival, Pennsylvania Military College, was being roasted in the same fire. The brothers of Epsilon Eta chapter at Drexel lent the apparatus to their cross-town Phila. brothers at Zeta Lam, after it had served its purpose in the EH house decoration which won a second prize in Drexel's Homecoming display contest.

THE TAU EPSI

OFFICIAL DIRECTORY

Founded at Columbia University on October 19, 1910.

Incorporated under the laws of the State of New York on January 8, 1913.

Admitted to the National Interfraternity Conference as a senior member in 1919.

National Executive Offices, 130 West 42 St., New York 36.

Telephone LAckawanna 4-0544, Office open 9:30 to 5:00 P.M. daily except weekends. Sidney S. Suntag, Executive Secretary.

THE GRAND COUNCIL

Consul: Joe H. Gerson, 2908 Nancy Creek Road, N.W. Atlanta, Ga.
First Vice Consul: Emanuel J. Evans, 1401 Fairview, Durham, N. C.
Second Vice Consul: Mendel Romm, Jr., Bank of Georgia Bldg., Atlanta, Ga.
Tribune: Erwin E. Cooper, 10 State St., Boston, Mass.
Assistant Tribune: Richard Barkin, 22 Kilby St., Boston, Mass.
Quæstor: Jack A. King, 5438 Euclid, Philadelphia, Pa.
Assistant Quæstor: Donald Rosenthal, 177 White Plains Rd., Tarrytown, N. Y.

EX OFFICIO

Plume Editor: Stuart Smith, 248 E. 74th St., New York 21, N. Y.

MEMBERS-AT-LARGE

Howard Agris, 2511 S. Garnet, Philadelphia 45, Pa.
Jack Berkowitz, 255 W. 88th St., New York, N. Y.
Yale Bloom, 1650 Lowell Ave., Lima, O.
Leslie Blum, 2930 Commonwealth, Chicago, Ill.
Abram I. Cohen, 491 Commonwealth Ave., Boston, Mass.
Arnold C. Cohen, 534 N. Portage Path, Akron, Ohio
Myer Feldman, 316 High St., Holyoke, Mass.
Jacob Freezer, 30 E. 71 St., New York, N. Y.
Sanders Heller, 11-15 Main St., Gouveneur, N. Y.
S. Matthew Helman, 1 Howland St., Roxbury, Mass.
Harris Jacobs, 596 Montgomery Ferry Dr., N.E., Atlanta, Ga.
Maxwell M. Kalman, 1200 St. Alexander St., Montreal, P.Q., Canada
Ben Kaplan, 29 Fairchild Place, Monticello, N. Y.
Samuel D. Karavan, 4818 Gransback, Philadelphia, Pa.
Samuel J. Lefrak, 97-27 64th Rd., Forest Hills, Queens, N. Y.
William Manns, 430 N. Rodeo, Beverly Hills, Calif.
Ralph Medjuck, 23 Connaught Ave., Halifax, N.S., Canada
Jack S. Mintzer, 6440 N. Bay Rd., Miami Beach, Fla.
Leo Schlossberg, 1000 Conn. Ave., N.W., Washington, D. C.
I. Edward Segal, 7302 S. Euclid, Chicago, Ill.
Bertram Shalman, 6451 Sprague St., Philadelphia, Pa.

THE BOARD OF TRUSTEES

Dr. I. Schwartz, 157 W. Hudson St., Long Beach, L. I., N. Y.
George H. Behrens, c/o Practicing Law Inst., 20 Vesey St., New York, N. Y.
Arnold Glenn, 160 Broadway, New York 38, N. Y.
Dr. Jacob D. Gold, 1550 E. 17th St., Brooklyn, New York
Louis Kanengeiser, 625 N. Broad St., Elizabeth, N. J.

S. Ch
Yor
Milto
ste
Seym
En
Arth
146

David Steinberg-Eps. Eta 154
22 Grove Pl.
Havertown, Pa.

Fox,
Md.
Men-
eston,

233

2 Mil-

PAST CONSULS

Samuel L. Fein, 1421 Main St., Springfield, Mass.
Sol D. Shaman, 1242 McNoughton Rd., Columbus 13, O.
Isadore Heiman, 1200 Howell Mill Rd., N.W., Atlanta, Ga.
Louis Manes, 2478 Worthington Rd., Akron, O.

REGIONAL CONSULS

Province

- I Nat Lash, 68 Crescent Rd., Burlington, Vermont
- Iia Stanley Jacobs, 223 Manthorne Ave., West Roxbury, Mass.
- Iib Earl Gordon, 30 Hamlin Dr., W. Hartford, Conn.
- III Ben Ungerman, 46 Eagle St., Albany, N. Y.
- (V-C) Joe Ruderman, 945 Sherman St., Watertown, N. Y.
- IVa Sidney Ross, 65-61 Saunders St., Forest Hills, N. Y.
- (V-C) Bob Kramer, 898 Ivy Hill Rd., Woodmere, N. Y.
- IVb Martin Zipern, 31 Ocean Parkway, Brooklyn, N. Y.
- (V-C) Larry Gottlieb, 135-38 78th Ave., Flushing 67, N. Y.
- V Sylman Euzent, Silver Springs, Md.
- (V-C) Leonard Wissow, Philadelphia, Pa.
- (V-C) John Smeyne, 7118 Park Heights, Baltimore, Md.
- VI Unassigned
- VII Owen R. Bressler, 2029 Airlene, Metairie, La.
- VIII Leonard Seligman, The Howell House, 710 Peachtree St., Atlanta, Ga.
- IX Irving Klepper, Fla. Title Bldg., Jacksonville, Fla.
- (V-C) Leonard Wolf, 838 Edgewood Dr., Lakeland, Fla.
- (V-C) Stuart Blumberg, 1975 Alton Rd., Miami Beach, Fla.
- X Marcus Ruben, 1236 Lakewood Ave., Lima, O.
- XI Leonard Lauter, 5033 N. Avers Ave., Chicago, Ill.
- XII E. James Judd, 2026 Ash St., Denver, Colo.
- XIII Jules E. Kaplan, 316 S. Rexford Dr., Beverly Hills, Calif.

TRUSTEES OF THE SCHOLARSHIP AND STUDENT AID FUND

Ben Massell, Honorary President, Atlanta, Ga.
Dr. A. I. Cohen, President, Boston, Mass.
Jack A. King, Vice-president, Philadelphia, Pa.
Samuel W. Strauss, Secretary-Treasurer, Camden, N. J.
William Bernstein, Hartford, Conn.
Yale Bloom, Lima, O.
Leslie Blum, Chicago, Ill.
Frank Constangy, Atlanta, Ga.
Erwin E. Cooper, Boston, Mass.
Leon Crestohl, Montreal, Canada
George Feldman, Boston, Mass.
Alfred Garber, Atlanta, Ga.
Richard Heldeman, Jamestown, N. Y.
Sanders Heller, Gouveneur, N. Y.
Stanley Jacobs, Boston, Mass.
Samuel J. Lefrak, Forest Hills, N. Y.
William Manns, Beverly Hills, Calif.
Mendel Romm, Jr., Atlanta, Ga.
Sid Ross, Forest Hills, N. Y.
Leo Schlossberg, Washington, D. C.
I. Edward Segal, Chicago, Ill.
Seymour Weisberg, Englewood, N. J.
Jack White, Great Neck, N. Y.

ALUMNI ASSOCIATIONS

Alabama State—President, Bertram Silman, Route 13, Box 352, Birmingham, Ala.

verton, Cleveland, Ohio.
Denver—President, Edward Korklin, 1085 Jasmine St., Denver, Colo.
Detroit—Reuben Wax, 18970 Lauder.
Georgia State—Julius A. Perlinski, 1087 Cumberland Rd. N.E., Atlanta, Ga.
Halifax—President, Ralph Medjuck, 23 Connaught Ave., Halifax, N. S.
Jacksonville—President, Irving Klepper, Florida Title Bldg., Jacksonville, Fla.
Metropolitan New York—President, Arnold Glenn, 160 Broadway, New York, N. Y.
Miami—President, Burton R. Levey, 8030 S.W. 63 Ct., Miami, Fla.
Montreal—President, Dr. William Slatkoff, 3097 The Blvd., Montreal, Quebec.
New England—President, Richard Barkin, 20 Kilby St., Boston, Mass.
North Carolina—President, Emanuel J. Evans, United Department Stores, Durham, N. C.
Northern New Jersey—Murray Sklar, 29 Hillside Terr., Livingston, N. J.
Philadelphia—President, Hugh Odza, Market St. Nat'l Bank Bldg., Philadelphia, Pa.
Southern California—President, Chuck Gelfand, 590 So. San Vicente Blvd., Los Angeles, Calif.
Washington, D. C.—President, Allan J. Fried, 8510 Milford Ave., Silver Spring, M.D.
Western Massachusetts—Ronald Zimmerman, 66 Chalmers St., Springfield, Mass.
Alpha—Stanley I. Schachter, 276 Fifth Ave., New York 5, N. Y.
Gamma—Louis Brause, 2797 Kingsbridge Terrace, Bronx 63, N. Y.
Delta—Sol Perlman, 1059 Washington Ave., Bronx, N. Y.
Theta—Alan B. Sostek, 28 Turner Terrace, Newton Centre, Mass.
Sigma—Harold Tompkins, 37 Wall St., New York, N. Y.
Tau Delta—Sol D. Shaman, 1242 McNoughton Rd., Columbus 13, Ohio.
Tau Zeta—Leonard Minsky, 46 Leighton St., Bangor, Me.
Tau Lambda—Stanley I. Corman, 7347 Damen Ave., Chicago, Ill.
Tau Rho—Paul Hachigian, 22 Leslie Dr., Wayne, N. J.
Tau Psi—Leonard D. Furman, 1013 Palisade Ave., Union City, N. J.
Rho Delta Rho—Albert Kraus, 1016 Ridge Ave., Evanston, Ill.
Epsilon Delta—Arthur Raybin, 1 Sadore Lane, Yonkers, N. Y.
Epsilon Iota—Richard E. Amsterdam, 68 Archer Drive, Bronxville, N. Y.
Zeta Lambda Phi—Jack A. King, 5438 Euclid Ave., Philadelphia 31, Pa.